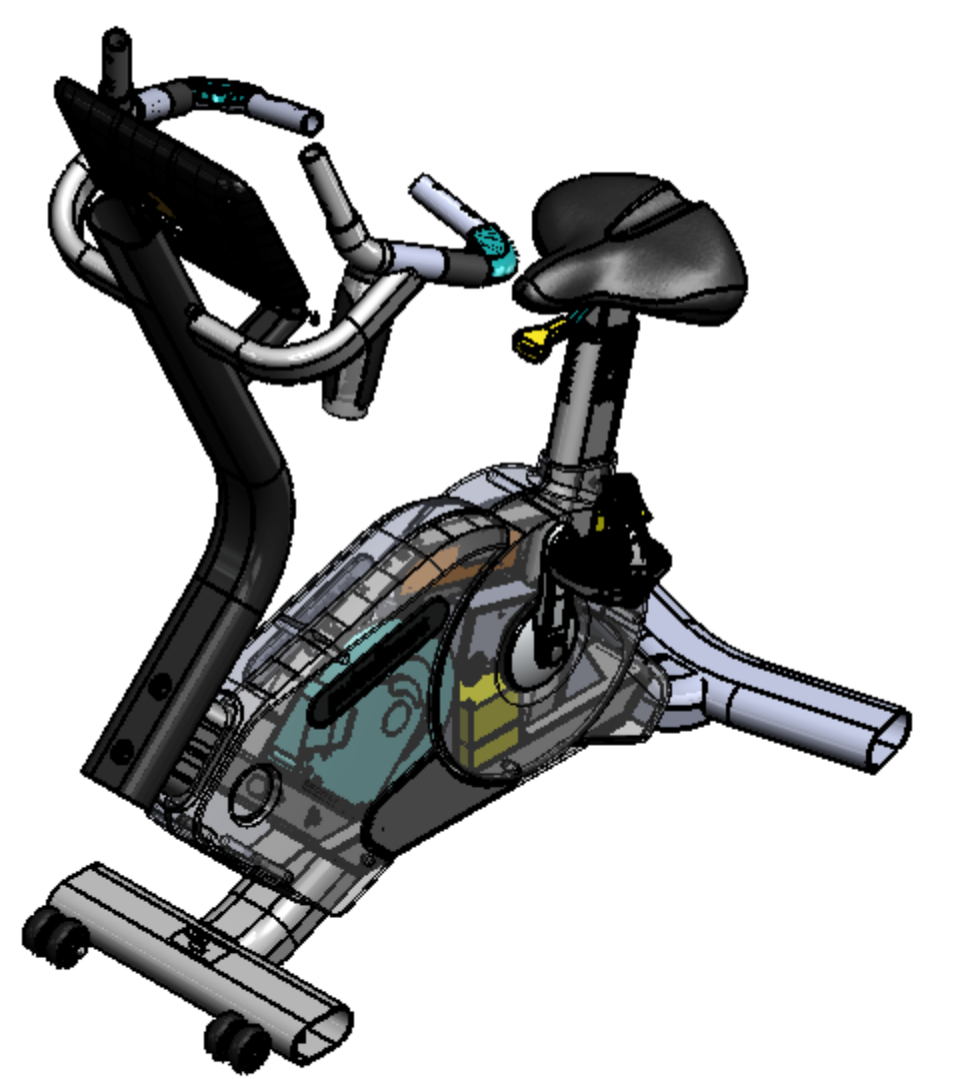


ITEM NO.	PART NUMBER	DESCRIPTION	QTY.
1	240-G25-1	FRONT LEG BUILD ASSEMBLY	1
2	240-G03-1	FRONT LEG WELD ASSEMBLY	1
3	80-640-1	CROSS BEAM	1
4	60-757-1	110x60 WHEEL BRACKET	2
5	35-114-1	M10 NUTSERT	2
6	120-121-1	FRONT LEG PRESSING	1
7	40-1036-1	FRONT LEG FIXING BRACKET	1
8	70-290-4	FOOT ADJUSTER	2
9	70-680-1	110x60 ENDCAP	2
10	26-1024-3	ANTI SLIP PAD	2
11	26-005-2	SPIN CYCLE ROLLERBLADE WHEEL	4
12	35-517-1	M10 DOMED NUT (SATIN)	2
13	35-515-1	M10 WHEEL SPACER	8
14	35-516-1	M10x80 CAP HEAD SCREW (SATIN)	2
15	240-G02-3	240G FRAME WELD ASSEMBLY - new seat post	1
16	80-646-2	BASE BEAM	1
17	40-977-1	TOP BRACE	1
18	80-648-1	FRONT BEAM	1
19	60-774-1	GEN/BRAKE MOUNTING PLATE	1
20	80-656-1	BEARING HOUSING SUPPORT BEAM	1
21	40-978-1	BRACKET	1
22	31-240-2	IDLER ARM PIVOT BUSH	1
23	60-775-2	SPRING ANCHOR	1
24	31-215-1	BEARING HOUSING	1
25	40-1049-1	CRANK SECTION SUPPORT BRACKET	1
26	40-1026-1	SUPPORT BRACKET	1
27	35-114-1	M10 NUTSERT	5
28	60-796-2	CLADDING FIXING TAB	1
29	240-G36-1	REAR LEG FIXING PLATE WELDED ASSEMBLY	1
30	60-791-1	LEG WELDED FIXINGPLATE	1
31	35-514-1	M12 FULL NUT	3
32	40-1056-1	240G BATTERY CLAMP	1
33	35-514-1	M12 FULL NUT	2
34	240-G37-2	SEAT STEM & SELECTOR WELDED ASSEMBLY	1
35	80-662-2	SEAT POST	1
36	60-794-1	SEAT POSITION PLATE	1
37	35-490-1	M4 X 16mm POZI HEAD SCREW	2
38	6-550-1	END PLATE	1
39	40-1059-1	'Z' BRACKET FOR SWITCH PLATE	1
40	240-G14-1	REAR LEG BUILD ASSEMBLY	1
41	240-G07-1	REAR LEG WELD ASSEMBLY	1
42	80-668-1	REAR LEG	1
43	35-519-1	M10 HEZAGONAL NUTSERT	2
44	120-122-1	REAR LEG PRESSING	1
45	40-1036-1	FRONT LEG FIXING BRACKET	1
46	70-680-1	110x60 ENDCAP	2
47	70-290-4	FOOT ADJUSTER	2
48	26-1024-3	ANTI SLIP PAD	1
49	26-1024-2	ANTI SLIP PAD	1
50	240-G08-2	240G FRONT BEAM BUILD ASSEMBLY	1
51	240-G09-3	240G FRONT BEAM WELDED ASSEMBLY	1
52	40-981-3	UPRIGHT BEAM	1
53	80-661-1	LOWER TV SUPPORT BEAM	1
54	31-255-1	DIA 30 M12 CAP HEAD INSERT	2
55	80-669-1	STORAGE SUPPORT ARM	1
56	40-1043-1	HANDLEBAR WELD PLATE	2
57	6-549-2	STORAGE TRAY SECONDARY FIXING PLATE	1
58	35-142-1	M6 FULL NUT ZINC PLATED	1
59	70-680-1	110x60 ENDCAP	2
60	40-1027-2	QUARTUS CONSOLE BACK PLATE	1
61	35-093-1	M6 x 12 BUTTON HEAD SCREW	4
62	26-113-1	6304-2RS1 BEARING	2
63	240-G04-3	240G PEDAL CRANK WELD ASSEMBLY	1
64	31-214-3	CRANK SHAFT	1
65	40-957-2	DRIVE RING	1
66	100-240-1	LCB ASSEMBLY	1
67	35-448-1	M3 x 8 PAN HEAD SCREW	2
68	35-448-1	M3 x 8 PAN HEAD SCREW	2
69	100-242-1	HYBRID TYPE GENERATOR (J10 PULLEY WITH CLUTCH)	1
70	240-G23-1	L.H. HANDLEBAR BUILD ASSEMBLY	1
71	240-G20-1	LH HANDLEBAR WELD ASSEMBLY	1
72	40-1008-1	L.H. HANDLEBAR SUPPORT BEAM	1
73	31-249-1	HANDLEBAR BOSS	1
74	40-999-1	TOP HANDLEBAR	1
75	40-1011-1	LOWER HANDLE BAR LH	1
76	40-1044-1	HANDLEBAR FIXING PLATE	1
77	70-685-1	ELBOW PAD	1
78	26-1285-2	HANDPULSE ASSEMBLY - CHI HUA	2
79	70-691-1	HAND PULSE END CAP	2
80	31-679-2	HAND PULSE RING	2
81	100-243-1 PCB	HAND RESISTANCE INTERFACE PCB	1
82	70-702-1	TOP HANDLE BAR DIP MOULDED GRIP	1
83	70-703-1	LOWER HANDLE BAR DIP MOULDED GRIP	1
84	35-508-1	3.3 Ø X 25 TWIN FAST SCREW	3
85	115-574-1	G-CV RESISTANCE BLANKING DECAL	1
86	115-573-4	HAND RESISTANCE MINUS DECAL	1
87	26-1279-2	J8 X Dia 310 SRS PULLEY	1
88	240-G24-1	R.H. HANDLEBAR BUILD ASSEMBLY	1
89	240-G21-1	R.H. HANDLEBAR WELDED ASSEMBLY	1
90	40-1009-1	RH HANDLEBAR SUPPORT BEAM	1
91	31-249-1	HANDLEBAR BOSS	1
92	40-999-1	TOP HANDLEBAR	1
93	40-1020-1	RH LOWER HANDLEBAR	1
94	40-1044-1	HANDLEBAR FIXING PLATE	1
95	70-685-1	ELBOW PAD	1

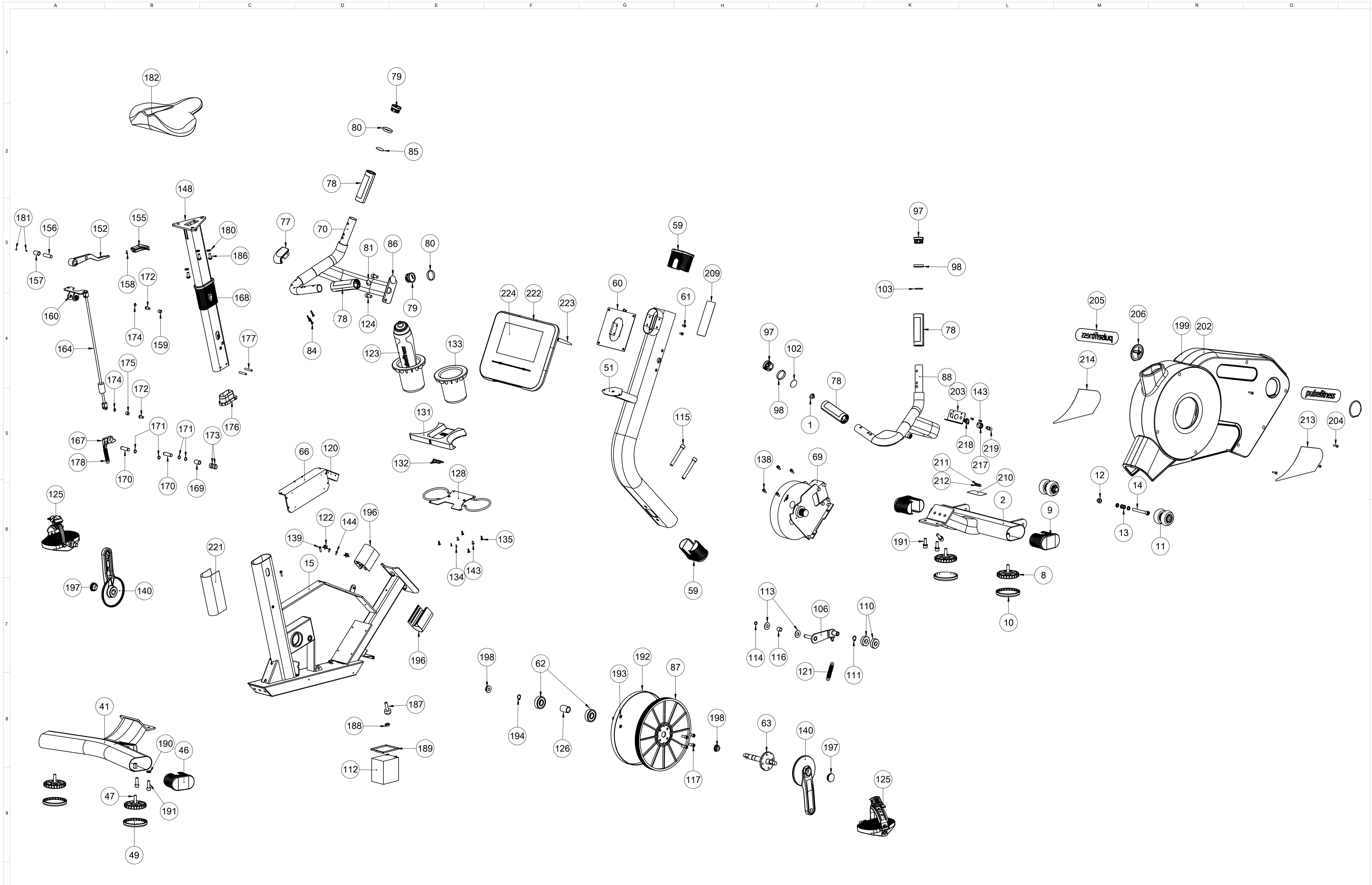
ITEM NO.	PART NUMBER	DESCRIPTION	QTY.
96	26-1285-2	HANDPULSE ASSEMBLY - CHI HUA	2
97	70-691-1	HAND PULSE END CAP	2
98	31-679-2	HAND PULSE RING	2
99	70-702-1	TOP HANDLE BAR DIP MOULDED GRIP	1
100	70-703-1	LOWER HANDLE BAR DIP MOULDED GRIP	1
101	35-508-1	3.3 Ø X 25 TWIN FAST SCREW	3
102	115-572-4	HAND RESISTANCE PLUS DECAL	1
103	115-574-1	G-CV RESISTANCE BLANKING DECAL	1
104	100-243-1	HAND RESISTANCE INTERFACE PCB	1
105	240-G05-2	240G IDLER BUILD ASSEMBLY	1
106	240-G06-2	250G IDLER WELD ASSEMBLY	1
107	40-1055-2	TENSION ARM	1
108	31-239-1	IDLER ARM PIVOT SHAFT	1
109	31-734-1	IDLER SHAFT	1
110	26-1294-1	17mm SHAFT 6203 BEARING	2
111	26-1293-1	17mm DIA EXTERNAL CIRCLIP	1
112	26-1298-1	VRLA BATTERY:	1
113	70-684-1	2mm NYLON SPACER	2
114	26-269-1	12mm EXTERNAL CIRCLIP	1
115	35-158-1	M12x90 CAP HEAD SOCKET SCREW	2
116	26-1246-1	PLAIN OILITE BUSH	2
117	35-036-1	M8x20 CAP HEAD SOCKET SCREW	4
118	70-690-1	PLASTIC TUBE	2
119	100-257-3	LCB INTERFACE PCB ASSEMBLY	1
120	35-448-1	M3 x 8 PAN HEAD SCREW	2
121	26-1296-2	OD 13.45 Ø x 100 EXTENSION SPRING	1
122	26-1082-1	CABLE CLIP	7
123	26-922-4	DRINKS BOTTLE - SOURCED BY SRS	1
124	35-157-1	M10x20 CAP HEAD SOCKET SCREW	4
125	26-1269-2	WEIGHTED FOOT PEDAL ASSEMBLY (GENDEL, WEIGHTED TOWARDS FRONT)	2
126	31-259-1	BEARING SPACER	1
127	240-G29-1	STORAGE TRAY BUILD ASSEMBLY	1
128	240-G28-1	STORAGE TRAY WELDED ASSEMBLY	1
129	6-538-1	STORAGE FIXING PLATE	1
130	40-1030-1	STORAGE LOOP	2
131	70-692-1	STORAGE TRAY	1
132	70-693-1	CABLE RETAINER	1
133	70-694-1	STORAGE BUCKET (BLACK)	2
134	35-481-1	M2.5X10 SELF TAP SCREW	2
135	35-512-1	3.3 Ø X 15 TWIN FAST SCREW, POZI DRIVE	4
136	70-708-2	SILICON iPod MOULD	1
137	35-454-1	M6 SPRING WASHER	4
138	35-466-1	M6x15 CAP HEAD SOCKET SCREW	4
139	35-507-1	M5 x 20 POZI PN HD SCREW	2
140	120-126-1	CRANK ARM LH	2
141	35-126-1	M5 FLAT WASHER BZP	2
142	35-505-1	M5 TYPE T NYLOC NUT	2
143	35-510-1	M5 x 15 POZI PN HD SCREW	4
144	35-509-1	M3 x 15 PAN HEAD SCREW	4
145	35-500-1	M3 PLAIN WASHER	4
146	35-501-1	M3 SPRING WASHER	4
147	240-G31-5	SEAT STEM BUILD ASSEMBLY	1
148	240-G30-1	SEAT STEM WELDED ASSEMBLY	1
149	60-781-1	SEAT PLATE	1
150	80-682-1	SEAT STEM EXTRUSION	1
151	240-G35-2	SEAT LEVER BUILD ASSEMBLY	1
152	240-G34-2	SEAT LEVER WELDED ASSEMBLY	1
153	60-784-2	SEAT ADJUSTER LEVER	1
154	31-633-2	SWIVEL SEAT HANDLE BOSS	1
155	70-700-1	HAND ADJUSTER	1
156	31-302-1	SEAT ADJUSTER SPINDLE	1
157	26-1135-1	STANDARD SINTERED BRONZE BEARING	1
158	35-427-1	M4x10 BUTTON HEAD SCREW	1
159	26-1291-1	8mm ID BRONZE BEARING	1
160	240-G33-1	SEAT LEVER PIVOT WELDED ASSEMBLY	1
161	6-530-1	REAR PIVOT ATTACH PLATE	1
162	6-531-1	REAR PIVOT SHAFT PLATE	2
163	31-246-1	REAR PIVOT BOSS	2
164	240-G32-1	SEAT ADJUSTER ROD WELDED ASSEMBLY	1
165	31-245-1	SEAT ADJUSTER ROD	1
166	40-994-1	SEAT ADJUSTER PIVOT BRACKET	2
167	60-782-2	SELECTOR PEG	1
168	70-681-5	EXTRUSION IN 100x50 TUBE ENDCAP	1
169	26-1135-1	STANDARD SINTERED BRONZE BEARING	1
170	31-244-1	12mm PIVOT SHAFT	2
171	26-269-1	12mm EXTERNAL CIRCLIP	4
172	31-247-1	8mm PIVOT SHAFT PIN	2
173	70-706-1	12mm BUSH SPACER	2
174	26-1290-1	8mm SHAFT EXTERNAL CIRCLIP	2
175	26-1291-1	8mm ID BRONZE BEARING	1
176	70-704-1	SEAT POST GUIDE ENDCAP	1
177	26-1292-1	SELOC PIN M6x40	2
178	26-1289-1	14.8 Ø x 81 EXTENSION SPRING	1
179	70-690-1	PLASTIC TUBE	2
180	35-080-1	M8 PLAIN WASHER	3
181	35-513-1	M4x5 SOCKET GRUB SCREW	4
182	240-G50-2	CYCLE SADDLE ASSEMBLY	1
183	160-170-3	CYCLE SADDLE	1
184	90-358-2	240G SEAT BASE	1
185	35-103-1	M8 x 11 PRONG T-NUT	3
186	35-095-1	M8 x 20 BUTTON HEAD SCREW	3
187	26-1014-1	CONICAL BUMP STOP HARD COMPOUND	1
188	35-479-1	M10 HALF NUT	1
189	26-1283-1	CABLE TIE	1
190	35-090-1	M10 SPRING WASHER	7

ITEM NO.	PART NUMBER	DESCRIPTION	QTY.
191	35-250-1	M10x30 CAP HEAD SOCKET SCREW	7
192	26-1297-2	J8 1175 POLY-V BELT (HUTCHINSON)	1
193	35-130-1	M8 SPRING WASHER	4
194	26-1293-1	17mm DIA EXTERNAL CIRCLIP	1
195	35-457-1	M6 x 10 SKT BUTTON HEAD SCREW	2
196	80-677-5	UPRIGHT COVER EXTRUSION	2
197	70-709-1	CRANK ARM CENTRE CAP	2
198	26-162-1	CRANK ARM FIXING NUT	2
199	240-G38-2	240G CLADDING AND INSERT ASSEMBLY	1
200	70-716-2	240G CLADDING - LEFT SIDE	1
201	35-520-1	M5 BRASS INSERT (TRUE PANEL)	5
202	70-718-2	240G CLADDING - RIGHT HAND SIDE	1
203	6-523-2	SWITCH MOUNTING BRACKET	1
204	35-345-1	M5 x 20 Pozi PN HD Screw S/S	7
205	6-553-5	PULSE FITNESS PRESSED BADGE	2
206	26-1302-3	PULSE BADGE POLYDOME ASSEMBLY	2
207	40-1057-3	PULSE METAL BADGE	1
208	70-717-2	PULSE BADGE POLYDOME	1
209	115-583-1	G-CV WARNING LABEL DECAL	1
210	115-584-1	RATING PLATE	1
211	115-592-1	TUV DECAL CLASS SC	1
212	115-586-2	240G SERIAL/MODEL NUMBER DECAL	1
213	115-596-2	240 LH U-Cycle Branding	1
214	115-597-1	240 RH U-Cycle Branding	1
215	115-581-4	240G SEAT EXTRUSION NUMBER DECAL	1
216	115-114-2	MANUFACTURED ON MONTH/YEAR	1
217	100-135-1	POWER SWITCH	1
218	100-185-1	CHASSIS MOUNTED 5 PIN DIN SOCKET	1
219	100-254-1	F SERIES (NiPi) COAXIAL FEMALE-FEMALE ADAPTOR	1
220	35-093-1	M6 x 12 BUTTON HEAD SCREW	2
221	115-603-2	240G SEAT POST STEM COVER DECAL	1
222	240-G15-8	G CV CONSOLE ASSEMBLY - 2.4GHz RECEIVER OPTION	1
223	26-338-2	3dBi R/SMA MALE 2.4GHz Antenna	1
224	115-558-4	Membrane Overlay	1

240G ADDITIONAL INFORMATION			
ITEM NO	PART NUMBER	DESCRIPTION	QTY
222	240-G15-XX	240G WIRELESS CONSOLE	1
	240-G42-XX	240G DIGITAL CONSOLE	1
-	26-1440-XX	18.5" QULIP ANDROID TV	1
-	135-668-XX	240G WIRING DIAGRAM	1
-	135-1053-XX	240G INSPECTION SHEET	1



<p>The Bromley Centre, Bromley Road, Congleton, Cheshire. CW12 1PT England Tel: +44 (0)1260 294600 Fax: +44 (0)1260 299282</p>	<p>3rd Angle Projection</p> <p>Tolerances (unless otherwise stated):</p> <table border="1"> <tr><td>Linear</td><td>±0.5</td></tr> <tr><td>Angular</td><td>±0.5°</td></tr> <tr><td>Hole Ø</td><td>+0.1</td></tr> </table>	Linear	±0.5	Angular	±0.5°	Hole Ø	+0.1	<p>Used On: -</p> <p>Dimensions in mm's (unless otherwise stated) DO NOT SCALE DRAWING</p> <p>Copying of this document, unauthorised circulation or communication of the contents thereof are forbidden except with prior permission of Pulse Fitness. All rights are reserved. © Pulse Fitness</p>	<p>Material / Specification:</p> <p>Title: 240G FUSION U CYCLE</p>	<table border="1"> <tr> <td>1</td> <td>ISSUED TO PRODUCTION</td> <td>20.10.09</td> </tr> <tr> <td>Issue</td> <td>Change Ref / History</td> <td>Date</td> </tr> </table> <p>135-1089-01</p> <p>Drawn: J.A.BUTTERWORTH Date: 25.06.08 Series No.: 240G Sheet: 1 of 2</p>	1	ISSUED TO PRODUCTION	20.10.09	Issue	Change Ref / History	Date
	Linear	±0.5														
Angular	±0.5°															
Hole Ø	+0.1															
1	ISSUED TO PRODUCTION	20.10.09														
Issue	Change Ref / History	Date														
<p>10</p>		<p>10</p>														



<p>The Bromley Centre, Bromley Road, Congleton, Cheshire, CW12 1PT England Tel: +44 (0)1260 254600 Fax: +44 (0)1260 259282</p>	<p>3rd Angle Projection</p>	<p>Used On: -</p>	<p>Material / Specification:</p>	<p>Title: 240G FUSION U CYCLE</p>
	<p>Dimensions in mm's (unless otherwise stated) DO NOT SCALE DRAWING</p>	<p>Dimensions in mm's (unless otherwise stated) DO NOT SCALE DRAWING</p>	<p>Material / Specification:</p>	<p>Issue: 1 ISSUED TO PRODUCTION 20.10.09 Change Ref / History: - Date: -</p>
<p>Tolerances (unless otherwise stated):</p> <p>Linear ±0.5 Angular ±0.5° Hole Ø +0.1</p>	<p>Linear ±0.1 Angular ±0.1 Hole Ø +0.1 1.0</p>	<p>Copying of this document, unauthorised circulation or communication of the contents thereof are forbidden except with prior permission of Pulse Fitness. All rights are reserved. © Pulse Fitness</p>	<p>Finish: -</p>	<p>Drawing No.: <b>135-1089-01</b></p>
<p>Drawn: J.A.BUTTERWORTH Date: 25.06.08</p>				<p>Series No.: 240G Sheet: 2 of 2</p>

PULSE BROTHERS LTD