

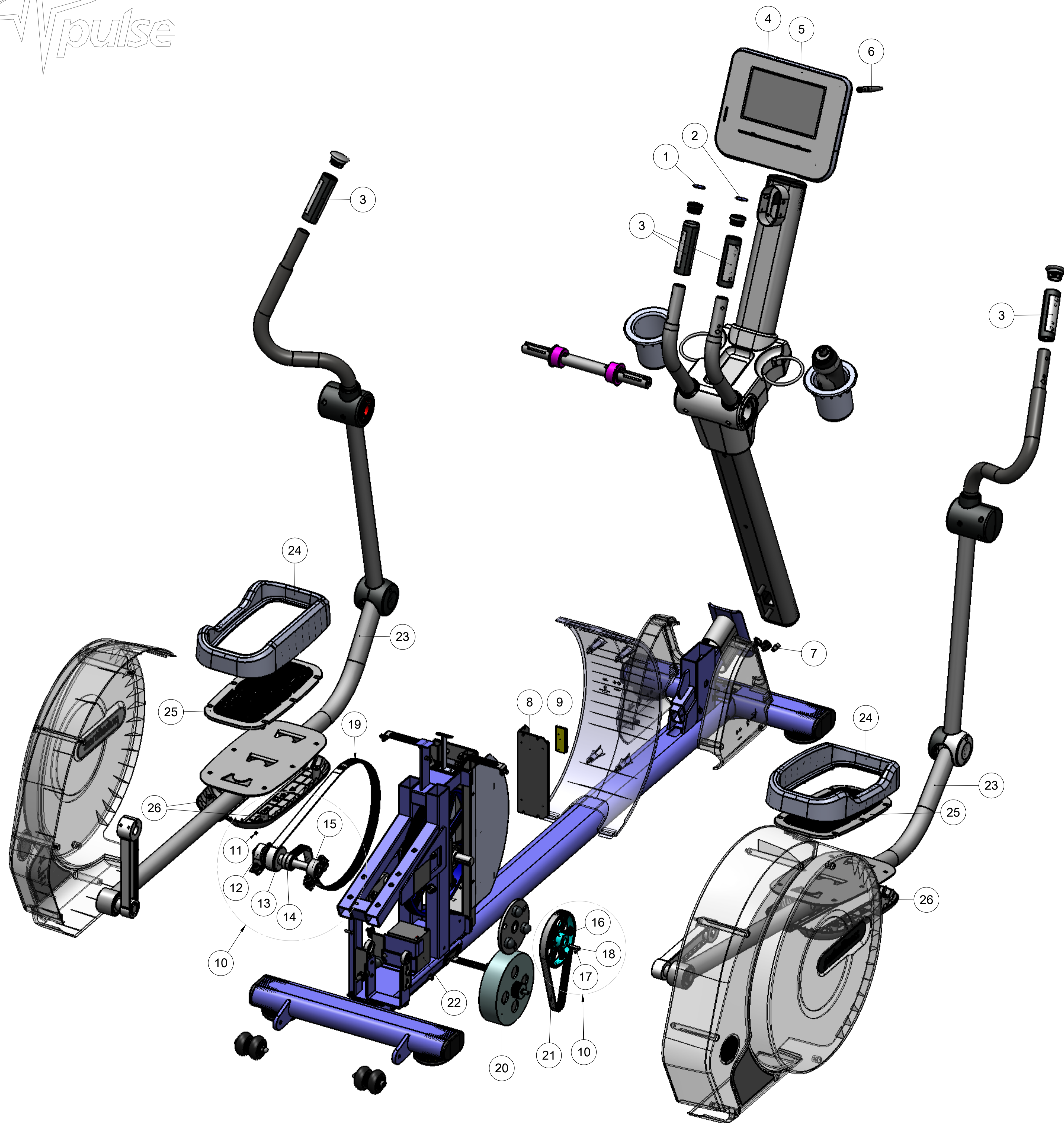
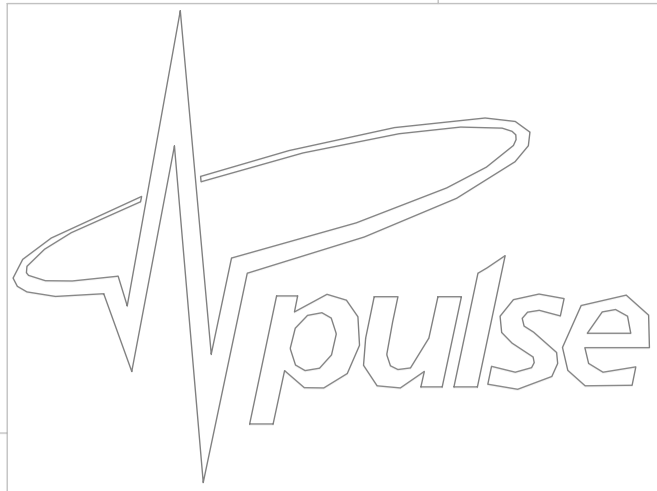
ITEM N.o	PART N.o	DESCRIPTION	QTY
1	115-573-3	HAND RESISTANCE DECAL (-)	1
2	115-572-3	HAND RESISTANCE DECAL (+)	1
3	26/1285-1	HAND PULSE SENSOR MOULDING	4
4	240-G15-6	240G WIRELESS CONSOLE	1
	240-G42-3	240G DIGITAL CONSOLE	
5	115-559	G-CV CONSOLE OVERLAY	1
6	26/338-2	3dbi 2.4GHz ANTENNA- WIRELESS ONLY	1
7	100-135	ON/OFF SWITCH	1
8	100-261-3	LCB ASSY	1
9	100-262-3	LCB INTERFACE PCB	1
10	26/149	INTERMEDIATE PULLEY ASSY	1
11	35-336-1	M6X5 GRUB SCREW	1
12	26/978-1	LPB 20A STEEL PILLOW BLOCK	1
13	31-365-2	INTERMEDIATE PULLEY SHAFT	1
14	26-085-1	6004-2Z BEARING	2
15	280-F40-1	SELF ALIGNMENT BEARING HOUSING	1
16	120-106-1	INTERMEDIATE PULLEY	1
17	35-556-1	M6X12 GRUB SCREW	1
18	60-460-1	6mm KEY	1
19	33/062	POLY V BELT PJ1475 / 580 J10	1
20	100-190	HYBRID TYPE GENERATOR	1
21	33/061	POLY V BELT J711 / 280 J8	1
22	26/1298-1	VRLA BATTERY: PE12V, 4.5A	1
23	280G-B07-01	280G-B FOOT BEAM	2
24	70-789-2	280G SWINGING FOOT MOULDING	2
25	26/119	91mm FOOT PEDAL LINK ASSY	4
26	26/118	46mm FOOT PEDAL LINK ASSY	4
27	70-651-A	180 SHOCK CORD	4

135-1098-02

280G-B FUSION X-TRAIN

EXPLODED DIAGRAM SHORT VERSION





ITEM N.º	PART N.º	DESCRIPTION	QTY
1	115-573-3	HAND RESISTANCE DECAL (-)	1
2	115-572-3	HAND RESISTANCE DECAL (+)	1
3	26/1285-1	HAND PULSE SENSOR MOULDING	4
4	240-G15-6	240G WIRELESS CONSOLE	1
	240-G42-3	240G DIGITAL CONSOLE	
5	115-559	G-CV CONSOLE OVERLAY	1
6	26/338-2	3dbi 2.4GHz ANTENNA- WIRELESS ONLY	1
7	100-135	ON/OFF SWITCH	1
8	100-261-3	LCB ASSY	1
9	100-262-3	LCB INTERFACE PCB	1
10	26/149	INTERMEDIATE PULLEY ASSY	1
11	35-336-1	M6X5 GRUB SCREW	1
12	26/978-1	LPB 20A STEEL PILLOW BLOCK	1
13	31-365-2	INTERMEDIATE PULLEY SHAFT	1
14	26-085-1	6004-2Z BEARING	2
15	280-F40-1	SELF ALIGNMENT BEARING HOUSING	1
16	120-106-1	INTERMEDIATE PULLEY	1
17	35-556-1	M6X12 GRUB SCREW	1
18	60-460-1	6mm KEY	1
19	33/062	POLY V BELT PJ1475 / 580 J10	1
20	100-190	HYBRID TYPE GENERATOR	1
21	33/061	POLY V BELT J711 / 280 J8	1
22	26/1298-1	VRLA BATTERY: PE12V, 4.5A	1
23	280G-F02-03	280G-B FOOT BEAM	2
24	70-786-2	280G-IFI PEDAL SURROUND	2
25	70-787-2MG	280G-IFI PEDAL RUBBER	2
26	70-809-1	280G-IFI LOWER MOULDING	4