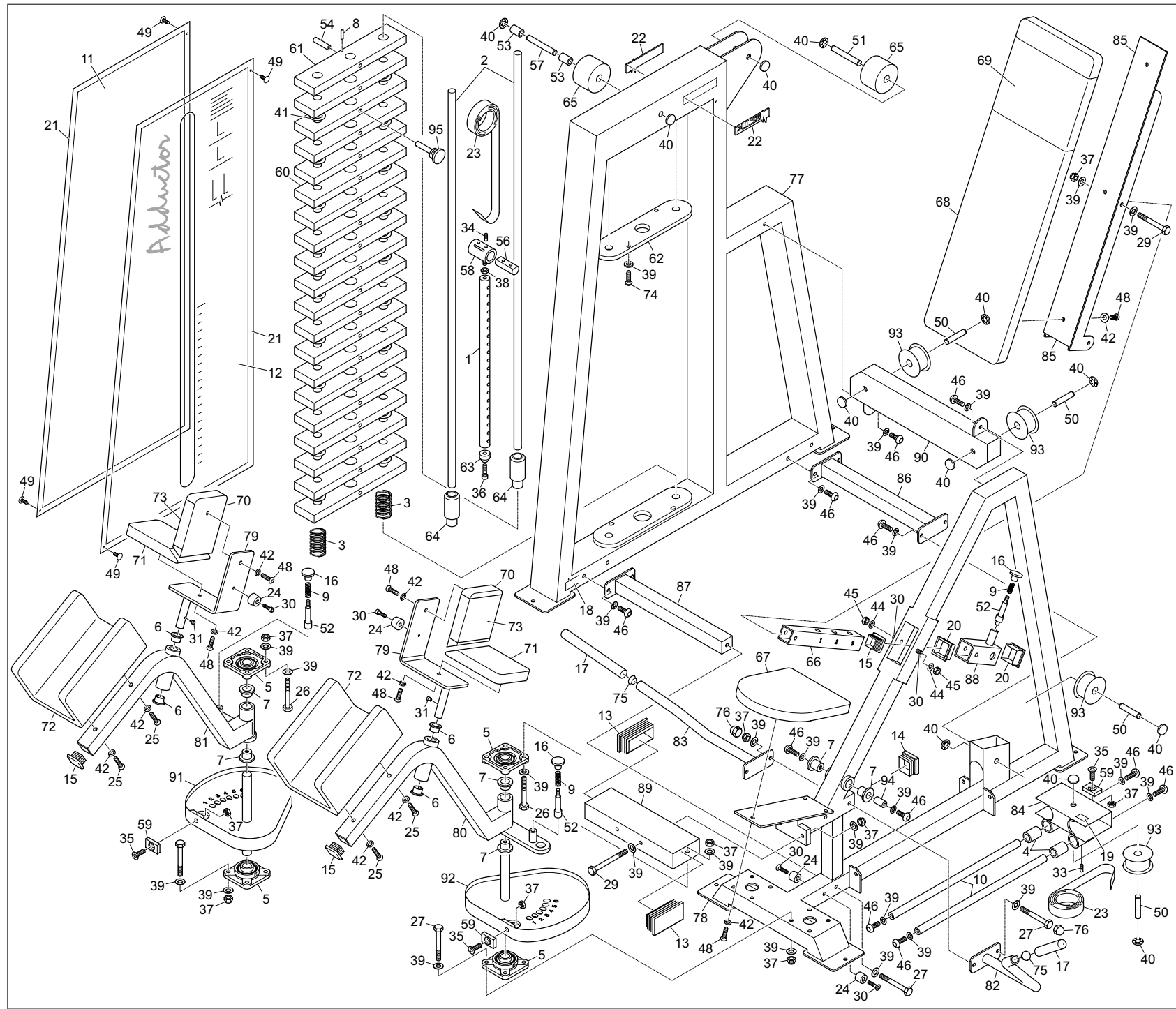


135-112-1



No.	Part No.	Description
1	10-102	Wt Stack Pin x 550 (CHROMED)
2	20-229	Guide Bars x 1302
3	C7275	Comp Spring 55mm Long
4	26/010	Plastic Linear Bearing
5	26/028	UCF/20/5/26 4 Bolt Flanged
6	26/029	FBM18/20 PB Bush Flanged
7	26/031	FBM20/20 25id 32od x 20 Flanged
8	26/042	Seloc Pin M3 x 25
9	26/067	Plunger Comp Spring S/S
10	26/099	20 Dia x 503 Case Hardened
11	29/047A	PX147 Rear Panel 585 x 1345
12	29/092A	PX192 Front Panel (PRINTED)
13	30/002	100 x 50 x 2-4 Blk Ribbed Insr
14	30/005	50 x 50 x 3.2/5 Blk Ribbed Insr
15	30/007	40 x 40 x 3 Blk Ribbed Endcaps
16	30/022	Blk Plastic Knob
17	30/033	TF50 Black Sleeve x 8in Grip
18	30/037	Serial Number Labels
19	30/064	Lubrication Point Label
20	30/065	Black Outer Inserts 40 x 40 x 2
21	30/070	Magnetic Strip ABR20
22	30/080	120mm Pulse Nameplate
23	33/025	Regulator Strap 25mm wide
24	34/013	Rubber Bump Stop 25d x 20
25	35/016	M8 x 60 Hex Head HT Bolt
26	35/017	M10 x 30 Hex Head HT Set Screw
27	35/024	M10 x 80 Hex Head HT Bolt
28	35/026	M10 x 110 Hex Head HT Bolt
29	35/027	M10 x 120 Hex Head HT Bolt
30	35/034	M6 x 25 Hex Sckt Csk Head Bolt
31	35/036	M8 x 20 Skt Hd Knurled Cap Screw
32	35/040	M6 x 30 Sckt Csk Head Screw
33	35/043	M6 x 6 Hex Sckt Grub Screw
34	35/044	M8 x 12 Hex Sckt Grub Screw
35	35/045	M10 x 35 Hex Sckt Csk Hd Screw
36	35/054	M6 x 30 Hex Sckt Knurl Cap Screw
37	35/071	M10 Nyloc Nut 'T' Type
38	35/073	M10 Lock Nut Right Hand
39	35/074	M10 Washer Form 'B'
40	35/075	1/2in Starlock Dometwasher
41	35/076	Plastic Washer 1.1/2in od
42	35/080	M8 Washer Form A Bright Zinc
43	35/081C	M10 Washer Special
44	35/083	M6 Washer Form A
45	35/085	M6 Nyloc Nut Type T
46	35/092	M10 x 25 Hex Skt Button Hd Screw
47	35/103	M8 x 11 T-Nuts Code TNT021
48	35/108	M8 x 30 Hex Skt Button Hd Screw
49	35/200	Pine Tree Clips G Head
50	30-110	Pulley Spindle x 60mm
51	30-214	Pulley Spindle x 72
52	30-276	Plunger
53	30-326	Pulley Spacers for 100mm RHS
54	30-407	12 Dia x 75 Long Tube Spacer
55	30-476	Countersink M6 Bush
56	30-586	Belt Clamp Bar 22d x 55mm Long
57	30-985	Pulley Spindle x 110
58	30-677	Belt Clamp
59	60-100	Clamp Plates (CHROMED)
60	60-106	75 x 25 x 352 Plastic 5kg Std Wt
61	60-107	75 x 25 x 352 Plastic 5kg Top Wt
62	60-264	Guide Bar Locating Plate
63	70-101	Nylon Muffe 25mm Dia
64	70-272	Top Weight Insert
65	70-301	Pulley for low Line Models
66	500-100	Short Adjuster (CHROMED)
67	U500/0001	Seat Pad
68	U500/0002	Back Board Pad
69	U500/0003	Back Board Wear Cover
70	U500/0004	Knee Pad
71	U500/0005	Thigh Pad
72	U500/0006	Ankle Pad
73	U500/0007	Knee Pad Wear Cover
74	35/097	M10 x 35 Hex Skt Button HD Screw
75	30/067	Round Insert OD 25mm
76	35/113	M10 Black Protection Cap
77	500-E1	Weight Stack Frame
78	500-E2	Seat Frame Assembly
79	500-E3	Knee Swivel Assembly
80	500-E4	L/H Leg Assembly
81	500-E5	R/H Leg Assembly
82	500-E6	L/H Handle Assembly
83	500-E7	R/H Handle Assembly
84	500-E8	Sliding Pulley Housing Assembly
85	500-E9	Back Rest Assembly
86	500-E10	Support Truss Assembly
87	500-E11	Support Brace
88	500-E12	Back Rest Swivel
89	500-E13	Bearing Fixation
90	500-E14	Pulley Housing Beam
91	500-E15	R/H Cam Assembly
92	500-E16	L/H Cam Assembly
93	70-104	Standard Pulley
94	30-281	Shaft x 76mm
95	Mag Pin	Multi Pin 30-835

500E Adductor