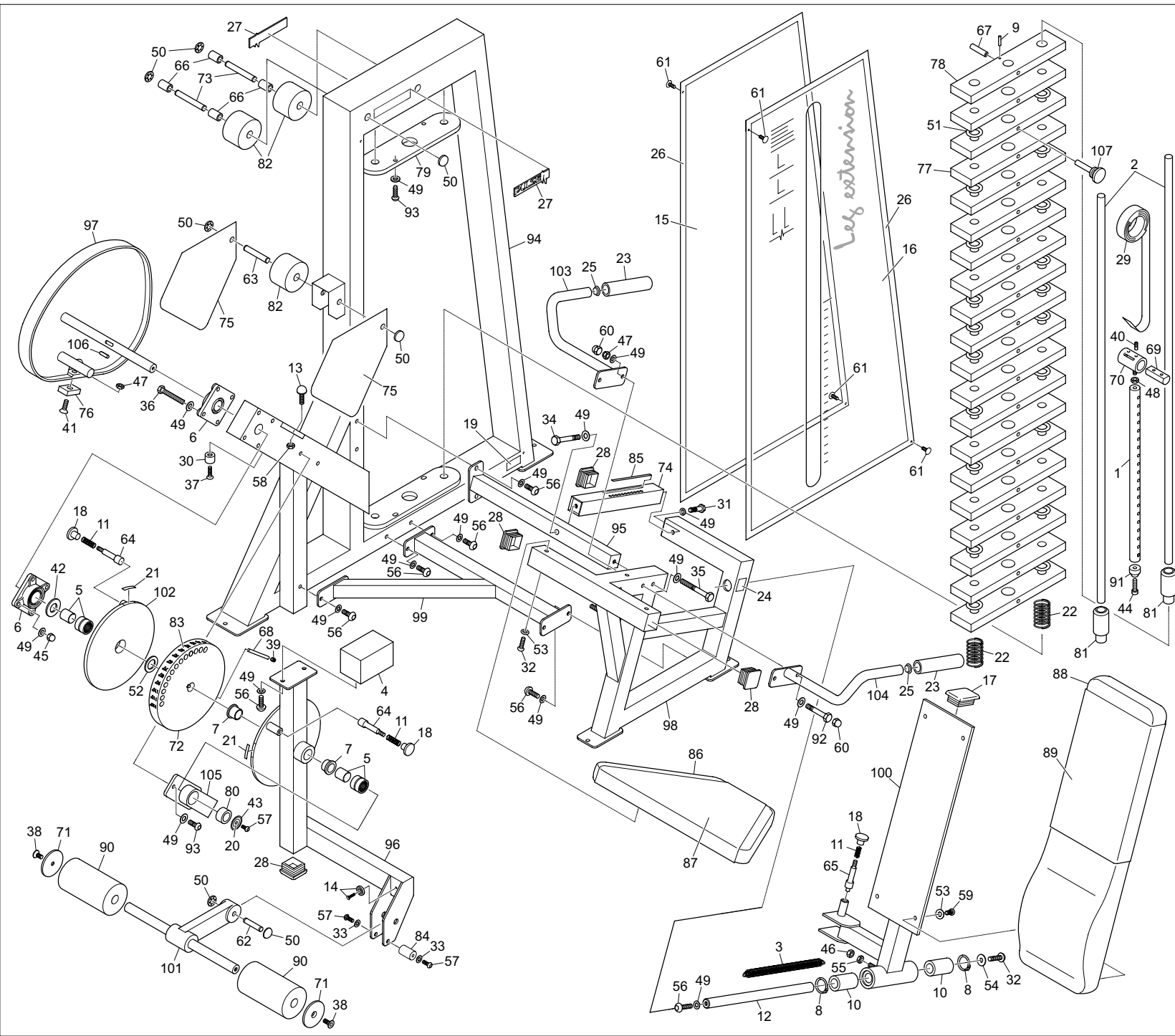


135-115-1



No.	Part No.	Description
1	10-102	WT Stack Pin x 562 (CHROMED)
2	20-229	Guide Bars x 1302
3	26/003	Expansion Spring for 310
4	25/006	Billet 75 x 75 x 120mm 070M20 BMS
5	26/131	NK125/30 Needle Roller Bearing
6	26/028	UCF/205/25 4 Bolt Flanged
7	26/031	FBM20/20 25id 32od x 20 Flanged
8	26/038	1300/40 Circlip - 40od Collar
9	26/042	Seloc Pin M3 x 25
10	26/049	SSEM25 Plastic Linear Bearing
11	26/067	Plunger Comp Spring S/S
12	26/098	25 Dia x 412mm Case Hardened
13	26/263	Conical Bump Stop - 512251-50
14	26/511	Fast Fixing Foot RS 220-967
15	29/047A	PX147 Rear Panel 585 x 1345
16	29/073A	PX177 Front Panel (PRINTED)
17	30/004	80 x 40 x 3/24 Blk Ribbed Insr
18	30/022	Blk Plastic Knob
19	30/037	Serial Number Labels
20	30/038	Circles 33od 22id
21	30/041	Arrows 7mm x 40mm
22	26/002	55mm Compression Springs
23	30/048	TF50 Black Sleeve x 6in Grips
24	30/064	Lubrication Point Label
25	30/067	Round Inserts
26	30/070	Magnetic Strip ABR20
27	30/080	120mm Pulse Nameplate
28	30/222	Endcap 2in x 2in 10-14 Type
29	33/025	Regulator Strap 25mm wide
30	34/013	Rubber Bump Stop 25d x 20
31	35/011	M10 x 25 Hex Head HT Set Screw
32	35/018	M8 x 75 Hex Head HT Bolt
33	35/083	M6 Washer
34	35/022	M10 x 60 Hex Head HT Bolt
35	35/023	M10 x 70 Hex Head HT Bolt
36	35/029	M10 x 90 Hex Head HT Bolt
37	35/034	M6 x 25 Hex Sckt Csk Head Bolt
38	35/039	M8 x 20 Hex Sckt Csk Hd Screw
39	35/041	M10 x 10 Skt Head Grub Screw
40	35/044	M8 x 12 Hex Sckt Grub Screw
41	35/045	M10 x 35 Hex Sckt Csk Hd Screw
42	35/049	2in od x 1in id x 1.5 Thick
43	35/050	1.5 Dia x 1/4id Repair Washer
44	35/054	M6 x 30 Hex Sckt Knurl Cap Screw
45	35/068C	M10 Dornenuts (CHROMED)
46	35/069	M8 Nylon Nut 'T' Type
47	35/071	M10 Nylon Nut 'T' Type
48	35/073	M10 Lock Nut Right Hand
49	35/074	M10 Washer Form 'B'
50	35/075	1/2in Starlock Dornwasher
51	35/076	Plastic Washer 1.1/2in od
52	35/078	Plastic Washer 1.3/4in od
53	35/080	M8 Washer Form A Bright Zinc
54	35/081C	M10 Washer Special
55	35/086	M6 Full Nut
56	35/092	M10 x 25 Hex Skt Button Hd Screw
57	35/093	M6 x 12 Hex Skt Button Hd Screw
58	35/102	M8 Half Nut Zinc Plated
59	35/105	M8 x 25 Hex Skt Button Hd Screw
60	35/113	M10 Black Protection Cap
61	35/200	Pine Tree Clips G Head
62	30-110	Pulley Spindle x 60mm
63	30-214	Pulley Spindle x 72
64	30-276	Plunger
65	30-323	Mod to Plunger
66	30-326	Pulley Spacers for 100mm RHS
67	30-407	12 Dia x 75 Long Tube Spacer
68	30-417	Tension Bar x 100mm
69	30-586	Belt Clamp Bar 22d x 55mm Long
70	30-617	Belt Clamp
71	30-735C	75mm OD 9.5id Washer
72	30-869	Index Plate 560 (CHROMED)
73	30-985	Pulley Spindle x 110
74	560-102	Seat Adjuster
75	6-217	Cam Guard
76	60-100	Clamp Plates (CHROMED)
77	60-106	75 x 25 x 352 Plastic 5kg Std Wt
78	60-107	75 x 25 x 352mm Plastic 5Kg Top Wt
79	60-264	Guide Bar Locating Plate
80	70-167	Bearing Spacer Nylon
81	70-272	Top Weight Insert
82	70-301	Pulley for low Line Models
83	70-308	Limit Sticker (Red Letters)
84	70-313	25 Dia Bump Stop
85	70-314	Seat Slide Sticker (Red Letters)
86	U560/0005	Seat Pad
87	U560/0006	Seat Pad Wear Cover
88	U560/0003	Back Rest Pad
89	U560/0004	Back Rest Wear Cover
90	U560/0007L	61/2" Roller
91	70-101	Nylon Muffel
92	35/024	M10 x 80 HT Bolt
93	35/097	M10 x 30 Button Head
94	560-E3	Main Frame Assembly
95	560-E4	Support Brace
96	560-E5	Leg Adjustment Assembly
97	560-E6	Cam Assembly
98	560-E7	Seat Frame Assembly
99	560-E8	Support Brace
100	560-E9	Back Rest Assembly
101	560-E10	Roller Assembly
102	560-E11	Limit Plate
103	560-E12	LH Handle
104	560-E13	RH Handle
105	560-E14	Support Arm
106	25/052	8mm Key Steel
107	Mag Pin	Multi Pin 30-835

560E Leg Extension