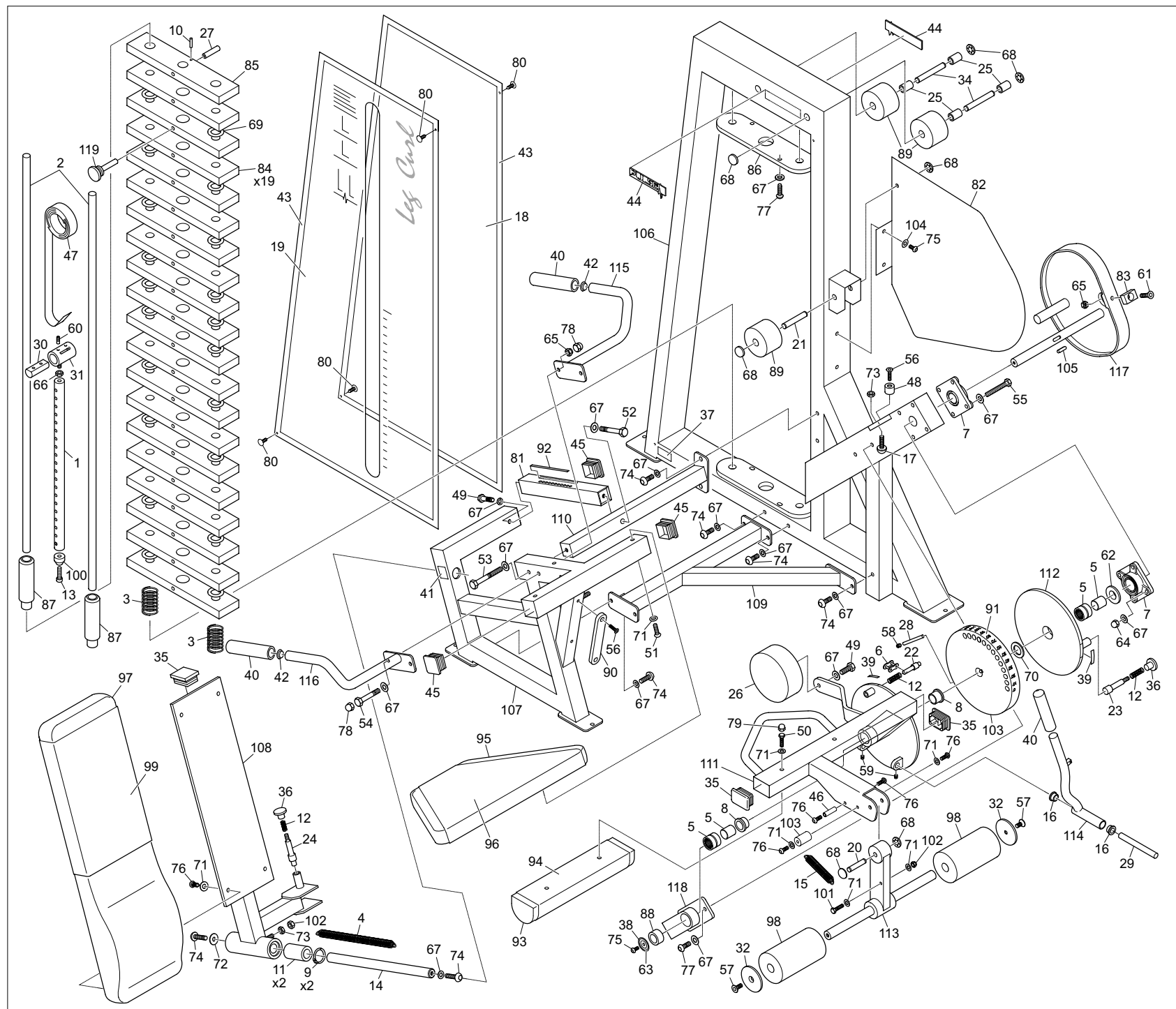


135-116-2



No.	Part No.	Description
1	10-102	Wt Stack Pin x 562 (CHROMED)
2	20-229	Guide Bars x 1302
3	26/002	C7275 Comp Spring 55mm long
4	26/003	Expansion Spring for 310
5	26/013	NK125/30 Needle Roller Bearing
6	26/017	Split Link 0.5in Pitch
7	26/028	UCF/205/25 4 Bolt Flanged
8	26/031	FBM20/20 25id 32od x 20 Flanged
9	26/038	1300/40 Circlip - 40od Collar
10	26/042	Select Pin M3 x 25
11	26/043	SSE125 Plastic Linear Bearing
12	26/067	Plunger Comp Spring S/S
13	35/054	M6 x 30 Hex Skt Knurl Cap Screw
14	26/098	25 Dia x 412mm Case Hardened
15	26/105	Tension Springs
16	26/226	Bush 21od x 15 id x 25
17	26/263	Conical Bump Stop - 512251-50
18	29/047A	PX147 Rear Panel 585 x 1345
19	29/074A	PX174 Front Panel (PRINTED)
20	30-110	Pulley Spindle x 60mm
21	30-214	Pulley Spindle x 72mm
22	30-261	Plunger 14 Dia x 52.5mm
23	30-276	Plunger
24	30-323	Mod Plunger
25	30-328	Pulley Spacers for 100mm RHS
26	30-329	Counterweight x 53.5 (CHROMED)
27	30-407	12 Dia x 75 long Tube Spacer
28	30-417	Tension Bar x 100mm *SC
29	30-449	Pivot Shaft 15d x 135mm
30	30-586	Belt Clamp Bar 22d x 55mm long
31	30-677	Belt Clamp (CHROMED)
32	30-735	75 Dia x 4 Thick Washer
33	30-875	Index Plate 562 (CHROMED)
34	30-985	Pulley Spindle x 110 *S Cx
35	30/004	60 x 40 x 3/24 Black Ribbed Insr
36	30/022	Black Plastic Knob with M10 thrd.
37	30/037	Ser No Labels .002in unlined
38	30/038	Circles 33od 22id (Sheets 10 each)
39	30/041	Arrows 7mm x 40mm 10 per sheet
40	30/048	22.23mm ID x 154mm Length Grip
41	30/064	Lubrication Point Label Self
42	30/067	Round Inserts OD 25mm p/n
43	30/070	Magnetic Strip AB20
44	30/080	120mm Pulse Nameplate (CHROMED)
45	30/222	Endcap 2in x 2in 10-14 Type
46	30-288	Spring Shaft 11.5 x 39.5
47	33/025	Regulator Strip 25mm wide
48	34/013	Rubber Bump Stop 25d x 20
49	35/011	M10 x 25 Hex Head HT Set Screw
50	35/016	M8 x 60 Hex Head HT Bolt
51	35/018	M8 x 75 Hex Head HT Bolt
52	35/022	M10 x 60 Hex Head HT Bolt
53	35/023	M10 x 70 Hex Head HT Bolt
54	35/024	M10 x 80 HT Bolt
55	35/029	M10 x 90 Hex Head HT Bolt
56	35/034	M6 x 25 Hex Sckt Csk Head Bolt
57	35/039	M8 x 20 Hex Sckt Csk Hd Screw
58	35/041	M10 x 10 Skt Head Grub Screw
59	35/043	M6 x 6 Grub Screw
60	35/044	M8 x 12 Hex Sckt Grub Screw
61	35/045	M10 x 35 Hex Sckt Csk Hd Screw
62	35/049	2in od x 1in id x 1.5 Thick
63	35/050	1.5 Dia x 1/4id Repair Washer
64	5/068	M10 Dometuts (CHROMED)
65	35/071	M10 Nyloc Nut *T Type
66	35/073	M10 Lock Nut Right Hand
67	35/074	M10 Washer Form 'B'
68	35/075	1/2in Starlock Domewasher
69	35/076	Plastic Washer 1.1/2in od X
70	35/078	Plastic Washer 1.3/4in od X
71	35/200	M8 Washer Form A Bright Zinc
72	35/081C	M10 Washer Special
73	35/086	M8 Full Nut
74	35/092	M10 x 25 Hex Skt Button Hd Screw
75	35/093	M6 x 12 Hex Skt Button Hd Screw
76	35/094	M8 x 20 Hex Skt Button Hd Screw
77	35/097	M10 x 35 Hex Skt Button Hd Screw
78	35/113	M10 Black Protection Cap
79	35/122	M8 Black Protection Cap
80	35/200	Pine Tree Clips S Head
81	562-104	Seat Adjuster Chrome
82	6-223	Belt Guard
83	60-100	Clamp Plates (CHROMED)
84	60-106	75 x 25 x 352 Plastic 5kg Std Wt
85	60-107	75 x 25 x 352mm Plastic 5Kg Top Wt
86	60-284	Guide Bar Locating Plate
87	70-106	Top Weight Insert
88	70-167	Bearing Spacer Nylon
89	70-301	Pulley for low Line Models
90	70-305	Stop Pad
91	70-309	Limit Sticker (Red Letters)
92	70-314	Seat Slide Sticker (Red Letters)
93	U562/0001	Knee Pad
94	U562/0002	Knee Pad Wear Cover
95	U562/0006	Seat Pad
96	U562/0007	Seat Pad Wear Cover
97	U560/0008	Back Rest Pad
98	U560/0007	6 1/2" Roller
99	U560/0009	Back Rest Wear Cover
100	70-101	Nyloc Muffler
101	35/085	M8 x 35 Hex Head HT Bolt
102	35/069	M8 Nyloc Nut *T Type
103	70-313	Nylon Stop
104	35/083	M6 Washer
105	25/050	6mm Key Steel x 25
106	562-E3	Side Frame
107	562-E4	Seat Frame
108	562-E7	Back Rest Frame
109	560-E8	Lower Tie Beam
110	562-E12	Upper Tie Beam
111	562-E5	Arm Assembly
112	562-E9	Limiter Plate Assembly
113	562-E11	Swing Arm
114	562-E8	Handle Adjuster
115	560-E12	LH Handle Bar
116	560-E11	RH Handle Bar
117	562-E6	Cam
118	560-E14	Cam Support Arm
119	560-E13	Multi Pin 30-835

562E Leg Curl