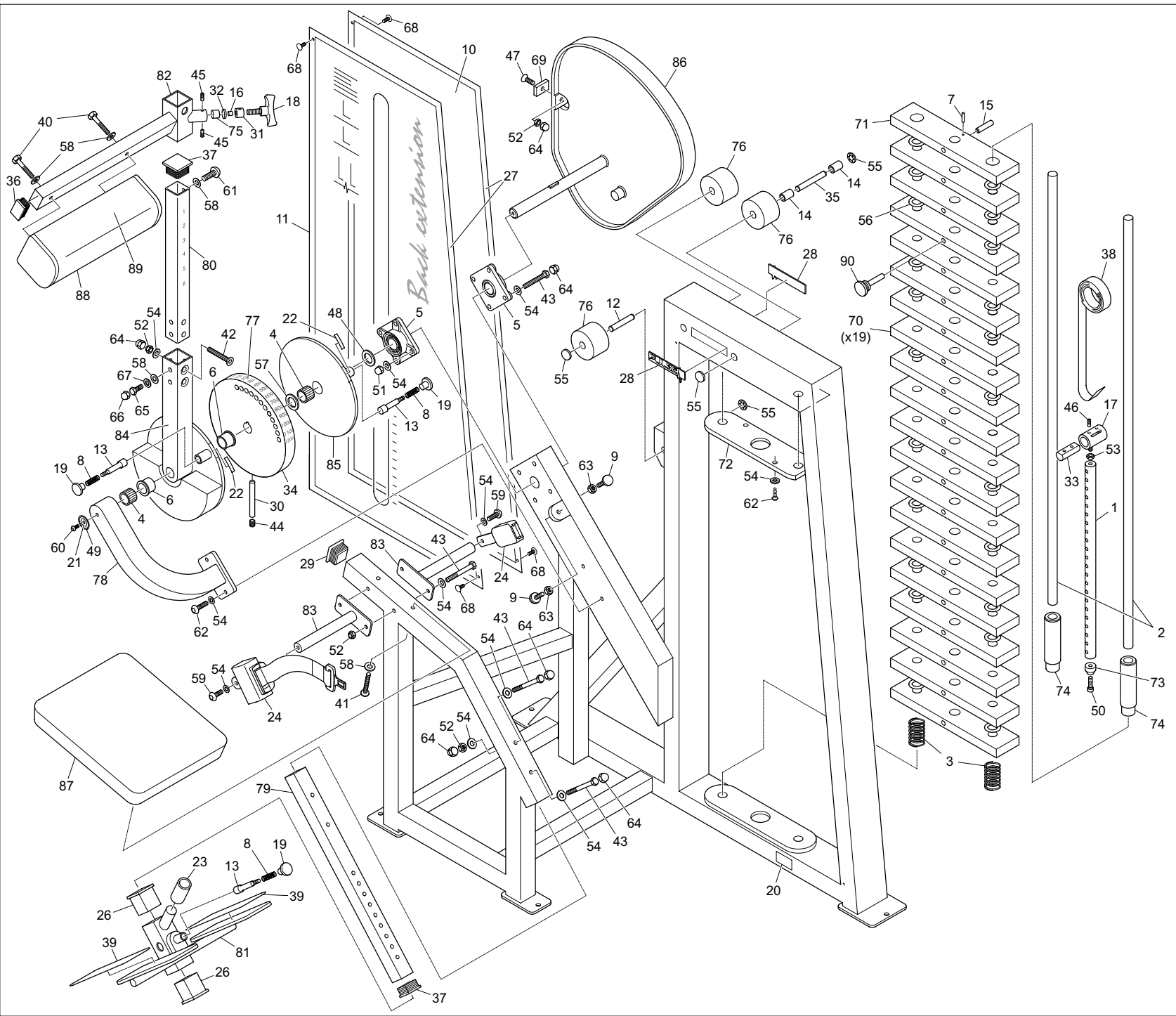


135-119-1



No.	Part No.	Description
1	10-102	Wt Stack Pin x 562 (CHROMED)
2	20-229	Guide Bars x 1302
3	26/002	55mm Compression Spring
4	26/013	NK125/30 Needle Roller Bearing
5	26/028	UCF205/25 4 Bolt Flanged
6	26/031	FBM20/20 25id 32odx20 Flanged
7	26/042	Seloc Pin M3 x 25
8	26/067	Plunger Comp Spring S/S
9	26/263	Conical Bump Stop - 512251-50
10	29/047A	PX147 Rear Panel 585 x 1345
11	29/078A	PX178 Front Panel
12	30-214	Pulley Spindle x 72
13	30-276	Plunger
14	30-326	Pulley Spacers for 100mm RHS
15	30-407	12 Dia x 75 long Tube Spacer
16	30-415	Packer 10mm D x 10mm Chem Blk
17	30-677C	Belt Holder
18	30/019	T1462 M12 x 25mm High Tensile
19	30/022	Blk Plastic Knob with M10 thrd.
20	30/037	Ser No Labels .002in unlined
21	30/038	Circles 33od 22id (Sheets 10 each)
22	30/041	Arrows 7mm x 40mm 10 per sheet
23	30/048	22.23mm IDx154mm Length Grip
24	30/051	Seat Belt Type SM0913, Type 2
25	30/062	Check Point Labels
26	30/065	Black Outer Inserts 40 x 40 x 2
27	30/070	Magnetic Strip ABR20
28	30/080	120mm Pulse Nameplate (CHROMED)
29	30/222	Endcap 2in x 2in 10-14 Type
30	30-417	Tension Bar x 100mm
31	30-458	20 Dia EN16T Insert
32	30-480	Tension Pad Chem Blacked
33	30-586	Belt Clamp Bar 22d x 55mm Long
34	30-874	Index Plate
35	30-985	Pulley Spindle x 110
36	30/006	50 x 30 x 2.6/3.2 Blk Ribbed Insr
37	30/007	40 x 40 x 3 Black Ribbed Endcaps
38	33/025	Regulator Strap 25mm Wide
39	34/031	Safety Walk 4in Wide in Reels
40	35/014	M8 x 50 Hex Head HT Bolt
41	35/018	M8 x 75 Hex Head HT Bolt
42	35/020	M10 x 60 C/Sunk Cap Head
43	35/029	M10 x 90 Hex Head HT Bolt
44	35/041	M10 x 10 Skt Head Grub Screw
45	35/043	M6 x 6 Hex Sckt Grub Screw
46	35/044	M8 x 12 Hex Sckt Grub Screw
47	35/045	M10 x 35 Hex Sckt Csk Hd Screw
48	35/049	2in od x 1in id x 1.5 Thick
49	35/050	1.5 Dia x 1/4id Repair Washer
50	35/054	M6 x 30 Hex Sckt Knurl Cap Screw
51	35/068C	M10 Dometus (CHROMED)
52	35/071	M10 Nylon Nut "T" Type
53	35/073	M10 Lock Nut Right Hand
54	35/074	M10 Washer Form 'B'
55	35/075	1/2in Starlock Dometwasher
56	35/076	Plastic Washer 1.1/2in od
57	35/078	Plastic Washer 1.3/4in od
58	35/080	M8 Washer Form A Bright Zinc
59	35/092	M10 x 25 Hex Skt Button Hd Screw
60	35/093	M8 x 12 Hex Skt Button Hd Screw
61	35/095	M8 x 20 Hex Skt Button Hd Screw
62	35/097	M10 x 35 Hex Skt Button Head
63	35/102	M8 Locknut
64	35/113	M10 Blk Protective Cap
65	35/121	M8 x 16 Hex Hd HT Set Screw
66	35/122	M8 Blk Protective Cap
67	35/130	M8 Sping Washer Single Coil
68	35/200	Pine Tree Clips G Head
69	60-100	Clamp Plates (CHROMED)
70	60-106	75 x 25 x 352 Plastic 5kg Std Wt
71	60-107	75 x 25 x 352 Plastic 5kg Top Wt
72	60-264	Guide Bar Locating Plate
73	70-101	Nylon Muffe 25mm Dia
74	70-106	Top Weight Insert
75	70-129	Tension Pad Black Nylon
76	70-301	Pulley for low Line Models
77	70-308	Limit Sticker Red Letters
78	600-E10	Support Arm
79	605-104	Foot Rest Selector (CHROMED)
80	605-105	Back Rest Selector (CHROMED)
81	605-E5	Footplate Assembly
82	605-E6	Back Pad Adjusting Arm
83	605-E7	Seat Belt Bar
84	605-E8	Counter Balance Arm
85	605-E9	Range Limiter
86	605-E10	Cam Assembly
87	U605/0001	Seat Pad
88	U605/0002	Back Pad
89	U605/0003	Back Pad Wear Cover
90	Mag Pin	Multi Pin 30-835

605E Back Extension