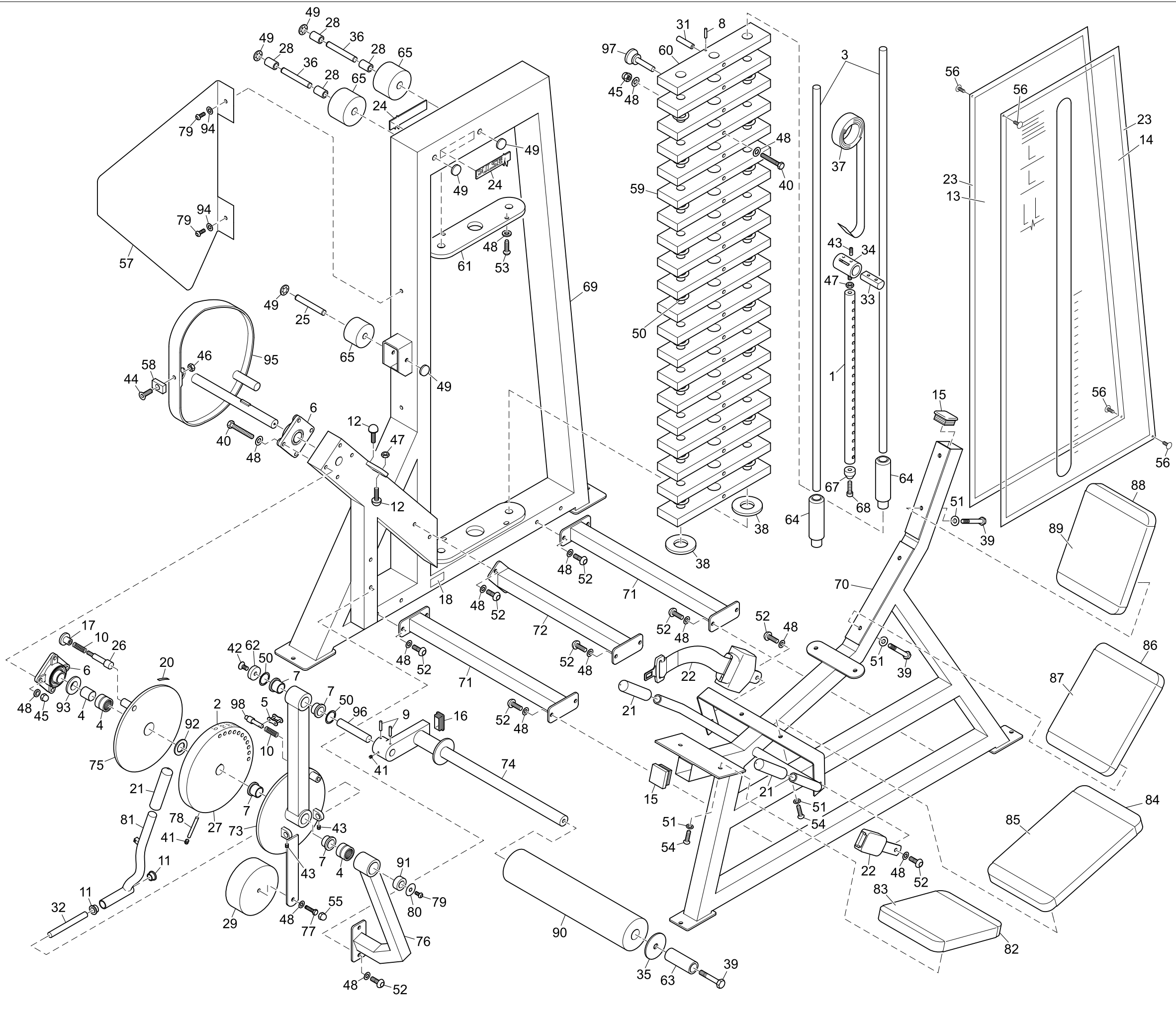


135-121-2



No.	Part No.	Description
1	10-102	Wt Stack Pin x 550 (CHROMED)
2	70-308	Limit Sticker Red Letters
3	20-229	Guide Bars x 1302
4	26/013	NK125/30 Needle Roller Bearing
5	26/017	Split Link 0.5in Pitch
6	26/028	UCF/205/25 4 Bolt Flanged
7	26/031	FBM20/20 25id 32od x 20 Flanged
8	26/042	Seloc Pin M3 x 25
9	26/055	Seloc Pin M6 x 40
10	26/067	Plunger Comp Spring S/S
11	26/226	Bush 21od x 15id x 25
12	26/263	Conical Bump Stop
13	29/047A	PX147 Rear Panel 585 x 1345
14	29/098A	PX198 Perspex Front Panel
15	30/005	50 x 50 x 3.2/5 Blk Ribbed Insert
16	30/009	50 x 25 x 1.25/3 Blk Ribbed Insert
17	30/022	Blk Plastic Knob with M10 thrd.
18	30/037	Ser No Lables 0.002in Unlined
19	30/038	Circles 33od 22id
20	30/041	Arrows 7mm x 40mm per sheet
21	30/048	22.23mm id x 154mm Length Grip
22	30/051	Seat Belt Type SM0913, Type 2
23	30/070	Magnetic Strip ABR20
24	30/080	120mm Pulse Nameplate (CHROMED)
25	30-214	Wheel Spindle x 72 IH
26	30-276	Plunger
27	30-316	Index Plate 420 (CHROMED)
28	30-326	Pulley Spacers for 100mm RHS
29	30-329	Counterweight x 53.5 (CHROMED)
30	30-341	Modify M10 x 80 Bolt
31	30-407	12 Dia x 75 long Tube Spacer
32	30-449	Pivot Shaft 15d x 135mm
33	30-586	Belt Clamp Bar 22d x 55mm long
34	30-677	Belt Clamp
35	30-735C	75mm od 9.5id Washer
36	30-985	Pulley Spindle x 110
37	33/025	Regulator Strap 25mm Wide
38	34/001	Weight Stack Buffers 70 OD x 21
39	35/018	M8 x 75 Hex Head HT Bolt
40	35/029	M10 x 90 Hex Head HT Bolt
41	35/041	M10 x 10 Sckt Head Grub Screw
42	35/042	M10 x 30 Hex Sckt Csk Head Screw
43	35/044	M8 x 12 Hex Sckt Grub Screw
44	35/045	M10 x 35 Hex Sckt Csk Hd Screw
45	35/068C	M10 Dometnuts (CHROMED)
46	35/071	M10 Nyloc Nut 'T' Type
47	35/073	M10 Lock Nut Right Hand
48	35/074	M10 Washer Form 'B'
49	35/075	1/2in Starlock Domewasher
50	35/076	Plastic Washer 1.1/2in od
51	35/080	M8 Washer
52	35/092	M10 x 25 Hex Skt Button Hd Screw
53	35/097	M10 x 35 Hex Skt Button Hd Screw
54	35/108	M8 x 30 Hex Skt Button Hd Screw
55	35/113	M10 Black Protection Cap
56	35/200	Pine Tree Clips G Head
57	6-243	Cam Guard
58	60-100	Clamp Plates (CHROMED)
59	60-106	75 x 25 x 352 Plastic 5Kg Std Wt
60	60-107	75 x 25 x 352 Plastic 5Kg Top Wt
61	60-264	Guide Bar Location Plate
62	70-157	38 Dia x 10 Thick Washer
63	70-210	Black Nylon Handle
64	70-272	Top Weight Insert
65	70-301	Pulley for low Line Models
66	70-308	Limit Sticker Red Letters
67	70-101	Nylon Muffel
68	35/054	M6 x 30 Skt Head Cap Screw
69	570-E3	Main Frame Assembly
70	570-E4	Seat Frame Assembly
71	570-E5	Support Brace
72	570-E6	Support Brace
73	570-E7	Pivot Arm Assembly
74	570-E8	Roller Arm Assembly
75	570-E9	Limiter Plate Assembly
76	570-E10	Support Arm Assembly
77	35/011	M10 x 25 Hex Head HT Bolt
78	30-417	Tension Bar x 100mm
79	35/093	M6 x 12 Hex Skt Button HD Screw
80	35/050	1.5 Dia x 1/4 ID Repair Washer
81	420-201	Handle Assembly
82	U570/0001	Covered Seat
83	U570/0002	Covered Seat Wear Cover
84	U570/0003	Covered Lower Back Pad
85	U570/0004	Lower Back Pad Wear Cover
86	U570/0005	Front Covered Seat
87	U570/0006	Front Covered Seat Wear Cover
88	U570/0007	Covered Head Pad
89	U570/0008	Head Pad Wear Cover
90	U570/0009	Covered Roller
91	70-167	Bearing Spacer
92	35/078	Plastic Washer 1 3/4in OD
93	35/049	2in OD x 1in ID x 1.5 Thick
94	35/083	M6 Washer Form A
95	420-D5	Cam Assembly
96	30-589	Swivel Shaft
97	Mag Pin	Multi Pin 30-835
98	30-261	Plunger

570E Glute Machine