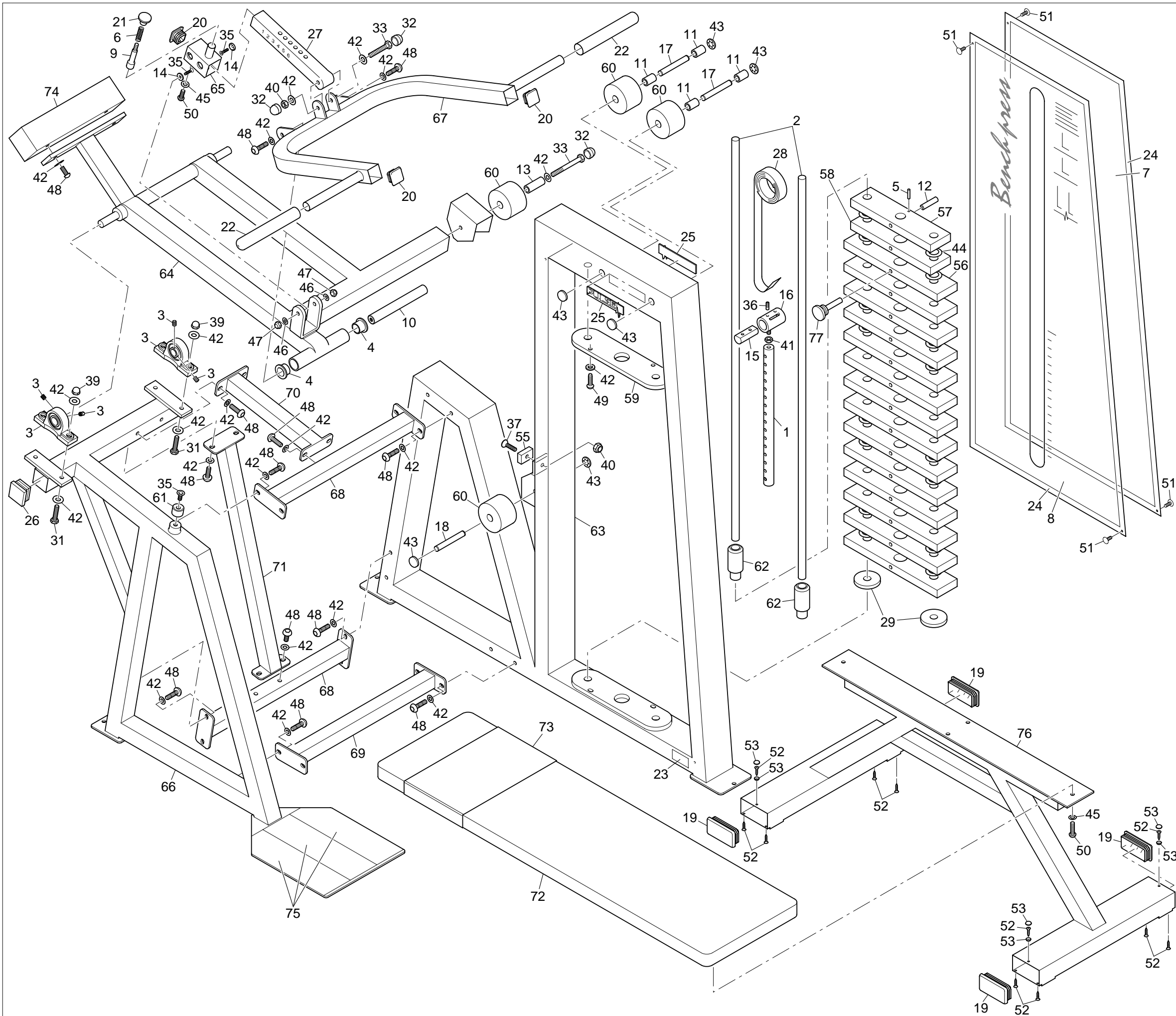


135-126-1



No.	Part No.	Description
1	10-102	Wt Stack Pin x 562 (CHROMED)
2	20-229	Guide Bar x 1302
3	26/022	UCP205/25 25id Cast Pillow Blk
4	26/031	FBM20/20 25ID 32odx20
5	26/042	Seloc Pin M3 x 25
6	26/067	Plunger Comp Spring S/S
7	29/047A	PX147 Rear Panel
8	29/062A	PX162 Front Panel
9	30-276	Plunger
10	30-324	Shaft x 199.5mm
11	30-326	Pulley Spacers for 100mm RHS
12	30-407	12 Dia x 75 Long Tube Spacer
13	30-419	Pulley Spindle
14	30-476	Countersink M6 Bush
15	30-586	Belt Clamp Bar 22D x 55mm Long
16	30-677	Belt Clamp
17	30-985	Pulley Spindle x 110
18	30-987	Pulley Spindle x 70
19	30/002	100 x 50 x 2-4 Black Ribbed Insert
20	30/007	40 x 40 x 3 Black Ribbed Endcaps
21	30/022	Blk Plastic Knob with M10 Thrd
22	30/033	22.23mm ID x 204mm Length Grip
23	30/037	Ser No Labels .002in unlined
24	30/070	Magnetic Strip ABR20
25	30/080	120mm Pulse Nameplate (CHROMED)
26	30/222	Endcap 2in x 2in 10-14 Type
27	300-101	Adjuster Pillar Sub Assembly
28	33/025	Regulator Strap 25mm wide
29	34/001	Weight Stack Buffers 70 Od x 21
30	34/014	EPS9 Rubber Edging Moulding
31	35/009	M10 x 40 Hex Head HT Bolt
32	35/113	M10 Black Protection Cap
33	35/023	M10 x 70 Hex Head HT Bolt
34	35/024	M10 x 80 Hex Head HT Bolt
35	35/034	M6 x 25 Hex Sckt Csk HD Screw
36	35/044	M8 x 12 Hex Sckt Grub Screw
37	35/045	M10 x 35 Hex Sckt Csk HD Screw
38	35/067	No 6 x 1/2in Self-Tapping Screw
39	35/068C	M10 Domenuts (CHROMED)
40	35/071	M10 Nyloc Nut 'T' Type
41	35/073	M10 Lock Nut Right Hand
42	35/074	M10 Washer Form 'B'
43	35/075	1/2in Starlock Domewasher
44	35/076	Plastic Washer 1.1/2in od
45	35/080	M8 Washer Form A Bright Zinc
46	35/083	M6 Washer Form A
47	35/085	M6 Nyloc Nut Type T
48	35/092	M10 x 25 Hex Skt Button Hd Screw
49	35/097	M10 x 35 Hex Skt Button Hd Screw
50	35/108	M8 x 30 Hex Skt Button Hd Screw
51	35/200	Pine Tree Clips G Head
52	35/240	No 8 x 3/4in C/Snk HD Pozzi Self
53	35/241	PLASTOP - White Screw Caps
54	35/284	M6 Black Nut Cap
55	60-100	Clamp Plates (CHROMED)
56	60-106	75 x 25 x 352 Plastic 5Kg Std Wt
57	60/135	50 x 25 x 300 Plastic 2.5Kg Top Wt
58	60-136	50 x 25 x 300 2.5Kg Std Wt
59	60-264	Guide Bar Locating Plate
60	70-301	Pulley for Low Line models
61	34-013	Rubber Bump Stop 250 x 20
62	70-272	Top Weight Insert
63	300-E02	Main Frame Assembly
64	300-E03	Operating Arm Sub Assembly
65	300-E04	Selector Assembly
66	300-E05	Side Frame Assembly
67	300-E06	Handle Sub Assembly
68	300-E07	Tie Bar
69	300-E08	Tie Bar
70	300-E09	Tie Bar
71	300-E10	Tie Bar
72	U300-0001	Covered Seat Board
73	U300-0002	Seat Board Wear Cover
74	60-148	Counter Balance
75	34/031	Safety Walk 4in Wide in Reels
76	730-D1	Flat Bench
77	Mag Pin	Multi Pin 30-835

300E Bench Press