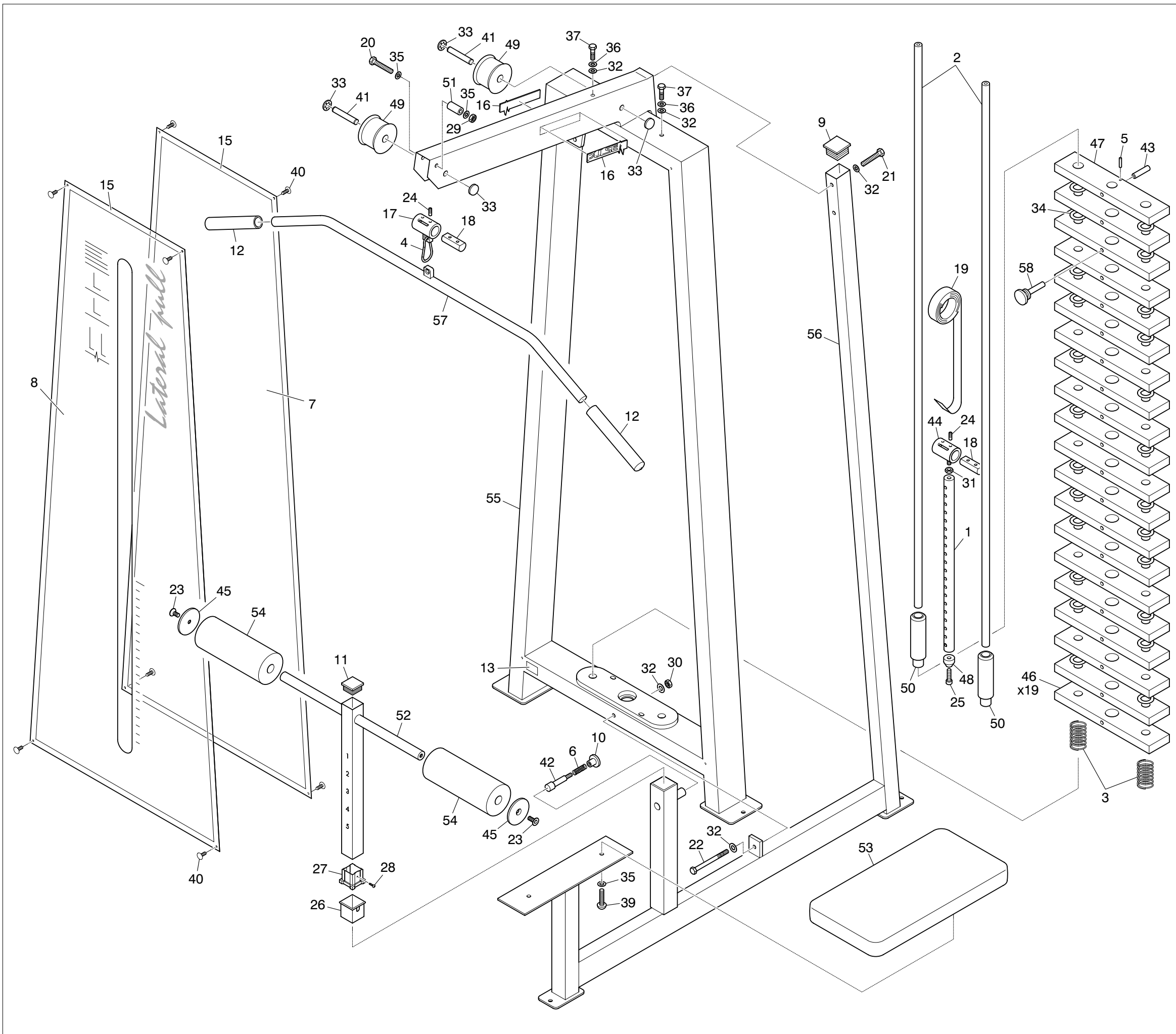


135-132-1



No.	Part No.	Description
1	10-102	Wt Stack Pin x 550
2	20-221	Guide Bar x 1928
3	26/002	55mm Compression Spring
4	26/021	08-52 Carbine Hook
5	26/042	Seloc Pin M3 x 25
6	26/067	Plunger Comp Spring S/S
7	29/055A	PX155 Rear Perspex Panel
8	29/087A	PX187 Front Perspex Panel
9	30/005	50 x 50 x 3.2/5 Black Ribbed Insr
10	30/022	Blk Plastic Knob with M10 Thrd
11	30/027	Plastic Insr 40 x 40 x 2.5
12	30/033	Black Sleeve 8in Grips
13	30/037	Ser No Labels .002in unlined
14	30/066	White Inner Insert
15	30/070	Magnetic Strip ABR20
16	30/080	120mm Pulse Nameplate (CHROMED)
17	30-828	Belt Clamp Welded Assembly
18	30-586	Belt Clamp Bar 22d x 55mm Long
19	33/004	Black Belt x 25mm Wide
20	35/016	M8 x 60 Hex Head HT Bolt
21	35/023	M10 x 70 Hex Head HT Bolt
22	35/028	M10 x 130 Hex Head HT Bolt
23	35/039	M8 x 20 Hex Sckt Csk Hd Screw
24	35/044	M8 x 12 Grub Screw
25	35/054	M6 x 30 Hex Sckt Knurl Cap Screw
26	30/065	Black Outer Inserts 40 x 40 x 2
27	30/066	White Inner Inserts 40 x 40 x 2
28	35/067	No 6 x 1/2in Self-Tapping Screw
29	35/069	M8 Nyloc Nut 'T' Type
30	35/071	M10 Nyloc Nut 'T' Type
31	35/073	M10 Lock Nut Right Hand
32	35/074	M10 Washer Form 'B'
33	35/075	1/2in Starlock Domewasher
34	35/076	Plastic Washer 1.1/2in od
35	35/080	M8 Washer Form A Bright Zinc
36	35/090	M10 Spring Washer
37	35/092	M10 x 25 Hex Skt Button Hd Screw
38	35/105	M8 x 25 Hex Skt Button Hd Screw
39	35/108	M8 x 30 Hex Skt Button Hd Screw
40	35/200	Pine Tree Clips G Head
41	30-110	Pulley Spindle x 60mm
42	30-276	Plunger
43	30-407	12 Dia x 75 Long Tube Spacer
44	30-677	Belt Clamp
45	30-735C	75mm OD 9.5ID Washer
46	60-106	75 x 25 x 352 Plastic 5kg Std Wt
47	60-107	75 x 25 x 352 Plastic 5kg Top Wt
48	70-101	Nylon Muffe 25mm Dia
49	70-104	Std Belt Pulley as Drawing
50	70-106	Top Weight Insert
51	70-117	Belt Retainer Black Nylon
52	380-101	Roller Adjuster
53	U380/0001	Seat Pad
54	U380/0002	9" Roller
55	380-E2	Main Frame
56	380-E3	Seat Frame
57	380-E4	Lat Bar
58	Mag Pin	Multi Pin 30-835