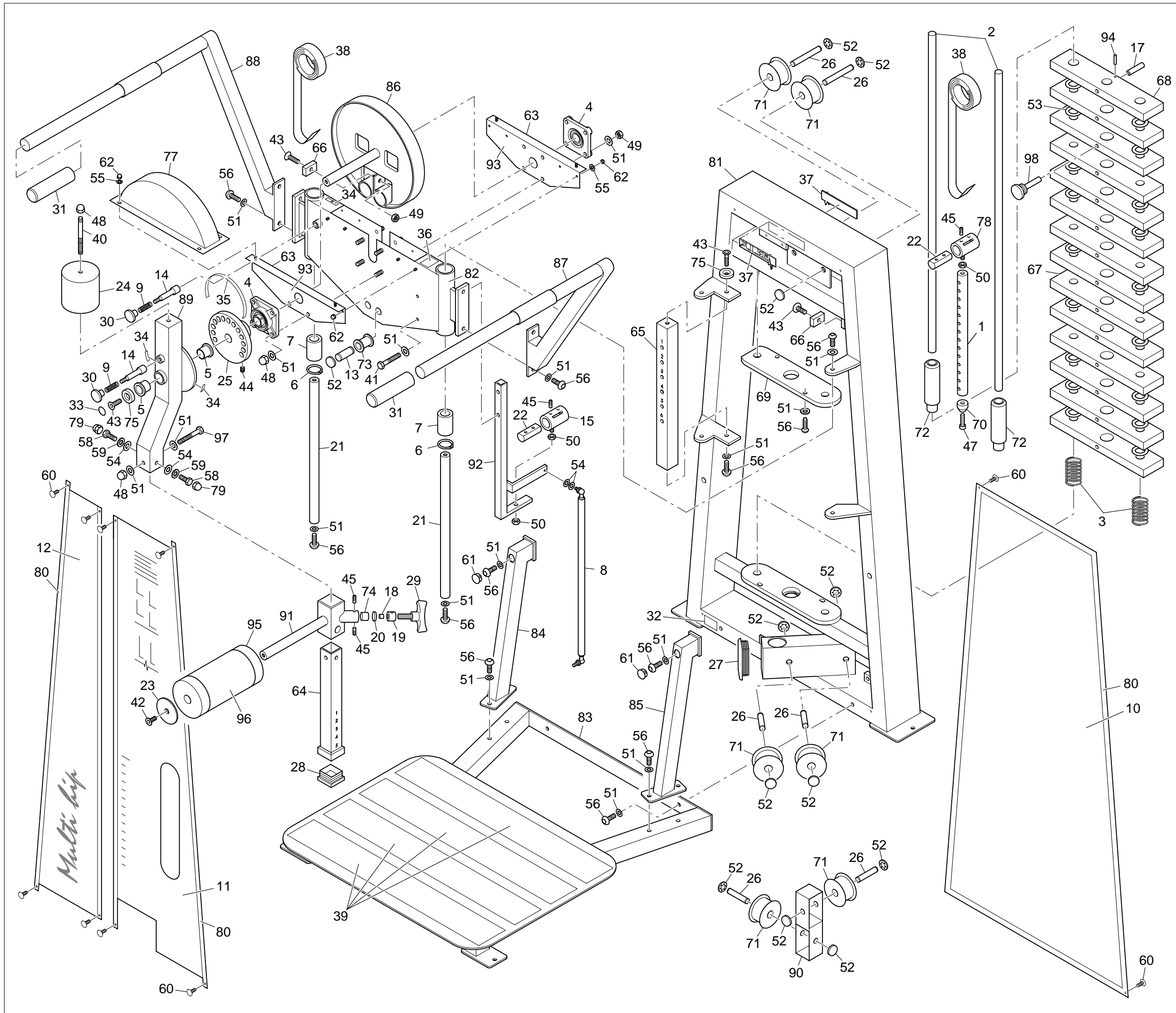


135-139-2



No.	Part No.	Description
1	10-100	Wt Stack Pin x 390 (CHROMED)
2	20-200	Guide Bars x 1045 (CHROMED)
3	26/002	Comp Spring 55mm Long
4	28/028	UCF/205/25 4 Bolt Flanged
5	26/031	25id 32odx20 Flanged
6	26/038	1300/40 Circlip - 40od Collar
7	26/049	KN2558 Plastic Linear Bearing
8	26/060	Gas Spring 250mm Code 686-991
9	26/067	Plunger Comp Spring S/S
10	29/095A	PX195 Rear Perspex Panel
11	29/096A	PX196 Printed Front Panel (RH)
12	29/097A	PX197 Printed Front Panel (LH)
13	30-110	Pulley Spindle x 60mm
14	30-293	Plunger - Hip Conditioner
15	30-310	Special Belt Clamp_ZP
16	30-406	Pulley Spindle x 44mm Long
17	30-407	12 Dia x 75 long Tube Spacer
18	30-415	Packer 10mm D x 10mm Chem Bk
19	30-458	20 Dia EN16T Insert
20	30-480	Tension Pad Chem Blacked
21	30-528	M/c 26/079 Tap M10 each end
22	30-586	Belt Clamp Bar 22d x 55mm long
23	30-735C	75mm od 9.5 id Washer (CHROMED)
24	30-801	Counter Weight (CHROMED)
25	30-876	Limit Plate (CHROMED)
26	30-987	Pulley Spindle x 70
27	30/002	100 x 50 x 2-4 Black Ribbed Insert
28	30/005	50 x 50 x 3.2/5 Black Ribbed Insert
29	30/019	T1462 M12 x 25mm High Tensile
30	30/022	Blk Plastic Knob with M10 thrd
31	30/031	Foot Grip KG10.6
32	115-120	General Rating Plate Decal
33	30/038	Circles 33od 22id
34	30/041	Arrows 7mm x 40mm
35	30/042	Wt Strips Red on Chrome
36	30/064	Lubrication Point Label Self
37	30/080	120mm Pulse Nameplate (CHROMED)
38	33/025	Regulator Strap 25mm Wide
39	34/031	Safety Walk 4in Wide in Reels
40	35/001	M10 Studding
41	35/023	M10 x 70 Hex Head HT Bolt
42	35/039	M8 x 20 Counter Sunk Cap Screw
43	35/042	M10 x 30 Hex Sckt Csk Hd Screw
44	35/043	M6 x 6 Hex Sckt Grub Screw
45	35/044	M8 x 12 Hex Sckt Grub Screw
46	35/045	M10 x 35 Hex Sckt Csk Hd Screw
47	35/054	M6 x 30 Hex Sckt Knurl Cap Screw
48	35/068C	M10 Domenuts (CHROMED)
49	35/071	M10 Nyloc Nut 'T' Type
50	35/073	M10 Lock Nut Right Hand
51	35/074	M10 Washer Form 'B'
52	35/075	1/2in Starlock Domewasher
53	35/076	Plastic Washer 1.1/2in od
54	35/080	M8 Washer
55	35/083	M6 Washer
56	35/092	M10 x 25 Hex Skt Button Hd Screw
57	35/093	M6 x 12 Hex Skt Button Hd Screw
58	35/121	M8 x 16 Hex Hd HT Set Screw
59	35/130	M8 Spring Washer Single Coil
60	35/200	Pine Tree Clips G Head
61	35/201	Dome Plug (Black)
62	35/256C	M6 Domed Nut
63	40-203	Panel Bracket 515
64	515-100	Short Adjuster (CHROMED)
65	515-101	Index Bar (CHROMED)
66	60-100	Clamp Plates (CHROMED)
67	60-106	75 x 25 x 352 Plastic 5kg Std Wt
68	60-107	75 x 25 x 352 Plastic 5Kg Top Wt
69	60-264	Guide Bar Locating Plate
70	70-101	Nylon Muffler 25mm Dia
71	70-301	Pulley for Low Line Models
72	70-106	Top Weight Insert
73	70-108	Standard Bobbin
74	70-129	Tension Pad Black Nylon
75	70-157	38 Dia x 10 Thick Washer
76	70-219	Nylon Washer
77	70-303	Cam Guard for 515
78	30-677	Belt Clamp
79	35/112	M8 Black Nut Cover
80	30/070	Magnetic Tape
81	515-E3	Main Frame
82	515-E4	Operating Assembly
83	515-E5	Platform
84	515-E6	Support Brace
85	515-E7	Support Brace
86	515-E8	Cam Assembly
87	515-E9	RH Handle
88	515-E10	LH Handle
89	515-E11	Operating Arm
90	515-E12	Pully Assembly
91	515-E13	Upholsted Arm
92	515-E14	Gas Spring Arm
93	40-203	Support Plate
94	26/042	Seloc Pin M3 x 25
95	U515/0001	Covered Roller
96	U515/0002	Covered Roller Wear Cover
97	35/024	M10 x 80 Hex Head HT Bolt
98	Mag Pin	Multi Pin 30-835

515E Multi Hip