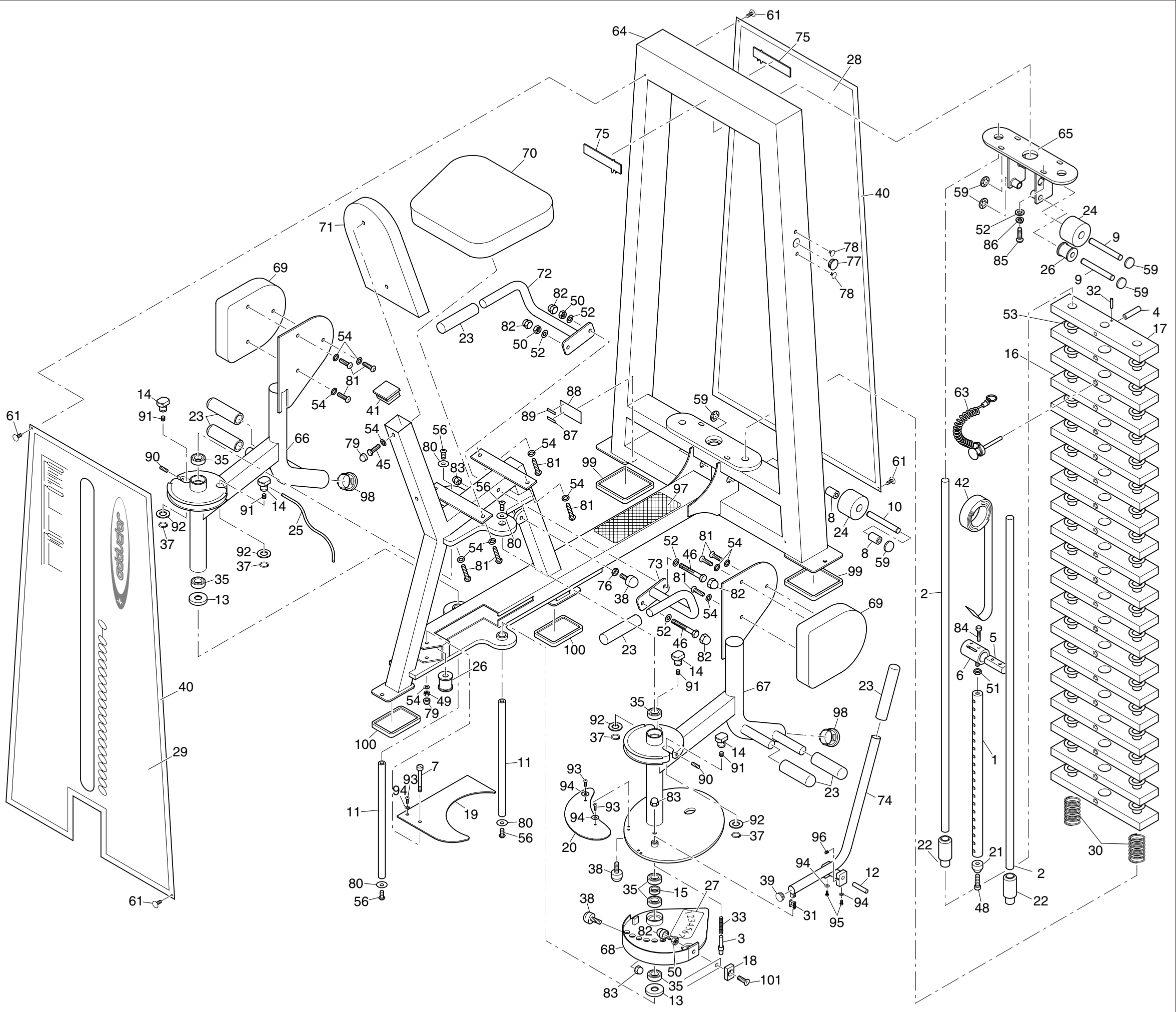


135-215-1



No.	Part No.	Description
1	10-102	100kg Stack Pin
2	20-239	Guide Bar x 1148
3	30-261	Plunger
4	30-407	Top wt.Retaining Pin
5	30-586	Belt Clamp Bar
6	30-677	Belt Clamp
7	31-454	Bobbin Spindle
8	31-461	Spacer x 24
9	31-462	Pulley Spindle x 112
10	31-464	Pulley Spindle x 118
11	31-467	Cam Spindle
12	31-468	Index Pivot
13	70-470	Spacer 50 OD x 21 ID x 8mm Thk
14	31-528	Wire Boss ( adj )
15	31-616	Spacer x 9mm
16	60-106	5 kg. Weight
17	60-107	5 kg Top Weight
18	60-100	Belt Clamp Plate (Chromed)
19	6-312	Large Fixed Cam Guard
20	6-313	Small Moving Cam Guard
21	70-101	Muffie
22	70-106	Top wt. Insert
23	70-407	Hand Grip x 154
24	26-1090	STD. Pulley C/W Bearings
25	70-426	Motion Cable
26	26/1091	Bobbin Pulley C/W Bearings
27	115-162	Range Decal
28	145-118	Rear Panel (Perspex)
29	500-F01	Front Panel (Perspex)
30	26/002	Comp. Spring x 55
31	26/017	"1/2" Split Link"
32	26/042	M3 x 25 Selok Pin
33	26/067	s/st. Plunger Spr.
34	26/079	brgs. 6001 - 12 i/d
35	26/085	brgs. 6004 - 20 i/d
36	26/226	Oilite Bush-15 i/d x 25
37	26-242	20 dia. Ext.Circlips
38	26/1015	Bump Stop
39	30/067	Round Insert
40	30/070	Magnetic Tape
41	30/222	50x50 End Cap
42	33/025	reg.strap x 25
43	35/013	M8 x 20 Set Pins
44	35/014	M8 x 50 Hex. Bolts
45	35/018	M8 x 75 Hex. Bolts
46	35/024	M10 x 80 Hex. Bolts
47	35/044	M8 x 12 Grub Screws
48	35/054	M6 x 30 Cap Screw
49	35/069	M8 Nyloc Nut
50	35/071	M10 Nyloc Nut
51	35/073	M10 /RH - Lock Nut
52	35/074	M10 Washer
53	35/076	"Plastic Washer x 1.5"
54	35/080	M8 Washer
55	35/081	M10 chr. Washer
56	35/092	M10 x 25 Button HD
57	35/100	M8 x 25 gr. Scews
58	35/114	M10 Nutserts
59	35/131	M12 Starlok Washers
60	35/144	No8x16-Posipan s/tap
61	35/200	Pine Tree Clip
62	35/242	M4 x 8 Button hd.
63	300-F02	Weight Stack Magnetic Pin Assy.
64	500-F02	Main Frame Assembly
65	500-F03	Top Bracket Assembly
66	500-F06	L.H Foot Rest Assembly
67	500-F07	R.H Foot Rest Assembly
68	500-F08	Cam Welded Assembly
69	500-F09	Knee Pad Assembly
70	500-F10	Seat Assembly
71	500-F11	Back Rest Assembly
72	560-E12	R.H Handle Assembly
73	560-E13	L.H Handle Assembly
74	505-F09	Index Handle Assembly
75	30/080	120mm Pulse Name Plate
76	35/102	M8 Locknut
77	26/1064-1	Fitlinxx Grommit (large)
78	26/1065-1	Fitlinxx Grommit (small)
79	35/122	M8 Black Plastic Cap
80	35/395	M10 Washer 30mm OD x 2mm Thk
81	35/396	M8 x 35 Hex Skt Button HD
82	35/113	M10 Black Plastic Cap
83	35/068	M10 Domenut
84	35/036	M8 x 20 Skt HD Knurled Cap Screw
85	35/097	M10 x 35 Hex Skt Button HD Screw
86	35/090	M10 Spring Washer
87	115-114	Month / Year - Date Decal
88	115-120	Strength Range Rating Plate Decal
89	115-122	General Serial Number Decal
90	35/397	M8 x 25 Grub Screw
91	35/398	M12 x 16 Grub Screw
92	35/399	370D x 21 ID Washer 3mm Thk
93	35/093	M6 x 12 Hex Skt Button HD Screw
94	35/083	M6 Washer Form A
95	35/400	M6 x 20 Pozzi PN HD Screw
96	35/371	M6 x 10 Grub Screw
97	34/029	Resilient Safety Walk 4in Wide
98	30/017	48.3mm OD Heavy Ribbed Black Insert
99	26/1092	Anti Slip Pad 110 x 147
100	26/1093	Anti Slip Pad 110 x 70
101	35/045	M10 x 35 Hex Skt Csk HD Screw

# 500F Adductor