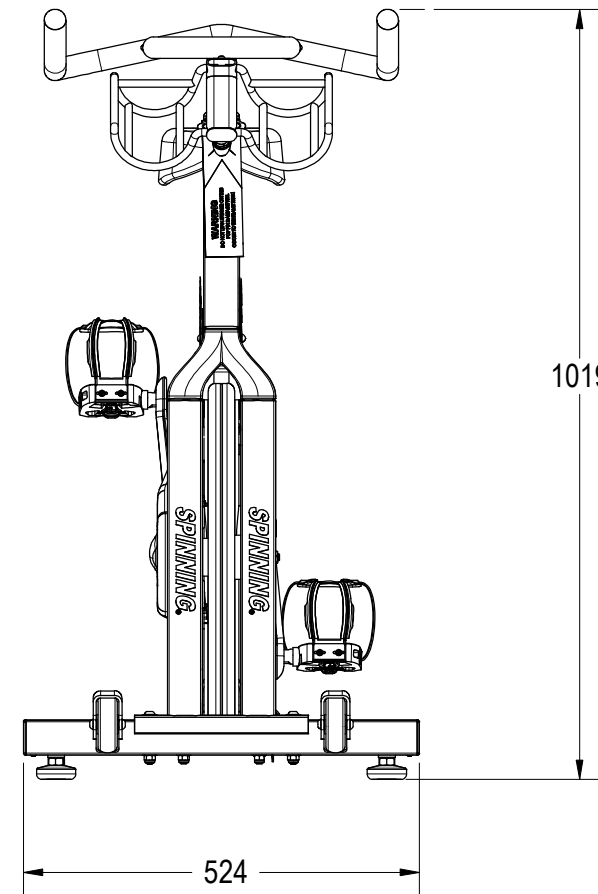
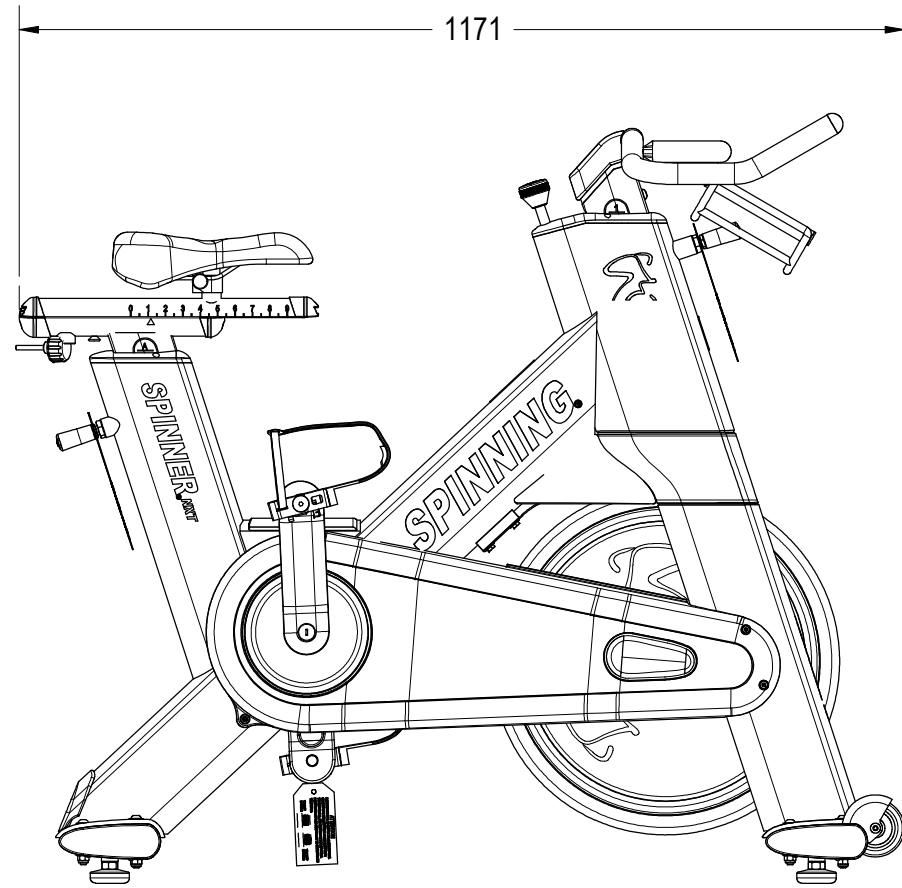


REVISION HISTORY				
REV	DATE	DESCRIPTION	ECO	BY
G	06-09-10	PRODUCTION RELEASE	13320	VW



NOTICE OF PROPRIETARY INFORMATION  
 THIS DOCUMENT SHALL NOT BE REPRODUCED NOR  
 SHALL THE INFORMATION CONTAINED HEREIN BE USED  
 BY OR DISCLOSED TO OTHER EXCEPT AS EXPRESSLY  
 AUTHORIZED BY UNISEN INC, D.B.A. STAR TRAC.

**DOCUMENT STATUS:  
 RELEASE**

- NOTES:**
- UNIT SHOWN AT ITS MOST COMPACT CONFIGURATION.
  - SEE SHEET 2 FOR BILL OF MATERIAL.

CLASS OF WORK	UNLESS OTHERWISE SPECIFIED DIMS ARE IN mm. TOLERANCES FOR MEASURE OF LENGTH ARE:							ANGLES = ±2°
	0.5 to 3	>3 to 6	>6 to 30	>30 to 120	>120 to 400	>400 to 1000	>1000 to 2000	
FINE	±0.05	±0.05	±0.1	±0.15	±0.2	±0.3	±0.5	----
MEDIUM <b>X</b>	±0.1	±0.1	±0.2	±0.3	±0.5	±0.8	±1.2	±2
COARSE	±0.2	±0.3	±0.5	±0.8	±1.2	±2	±3	±4
VERY COARSE	----	±0.5	±1	±1.5	±2.5	±4	±6	±8

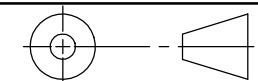
**MATERIAL**  
 SEE BOM

**FINISH**  
 N/A

VENDOR:

P/N: **N/A**

THIRD ANGLE PROJECTION



	INITIAL	DATE
DRAWN	JC	2-01-2009
CHECKED		
APPROVED		

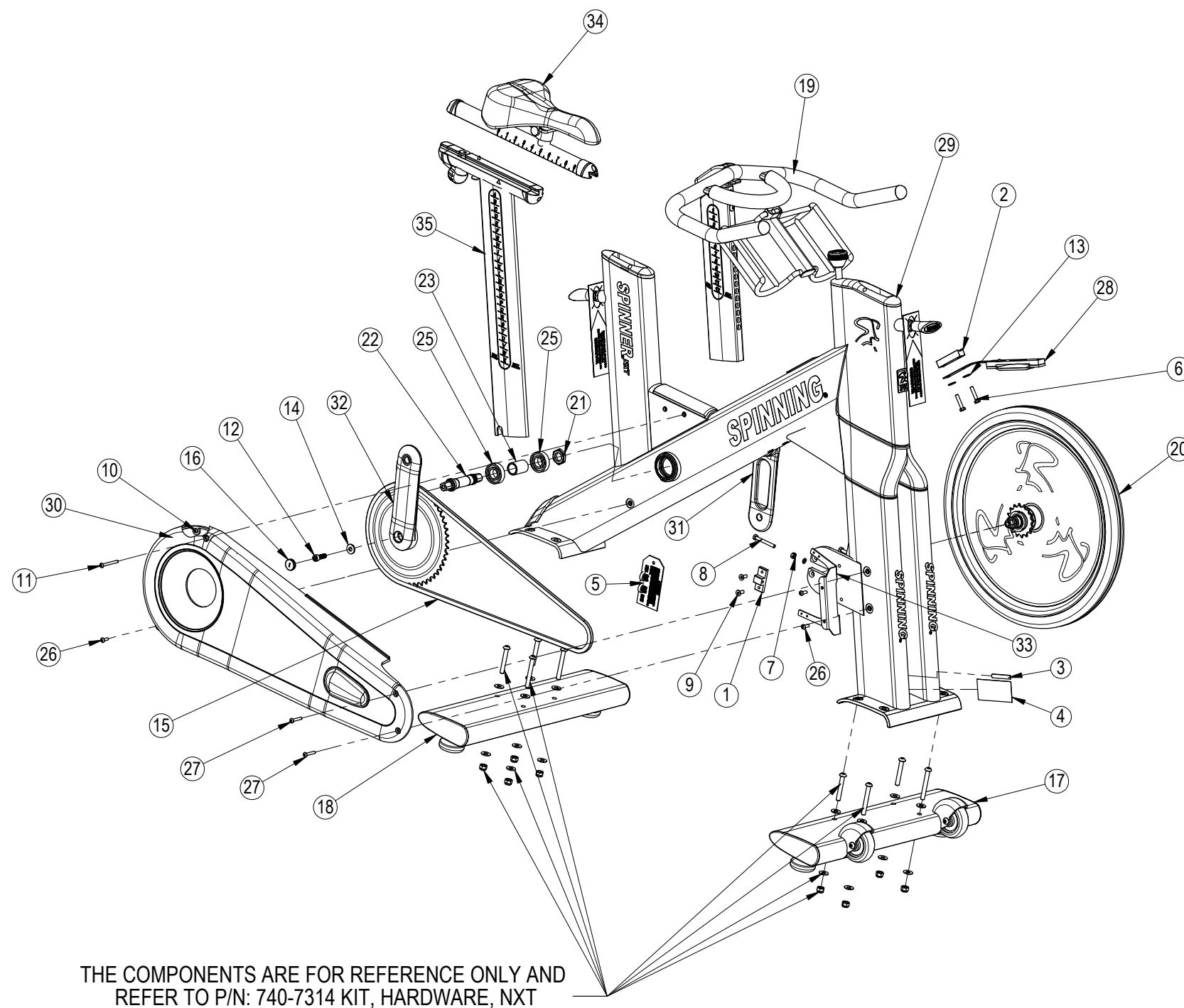
**UNISEN, INC. DBA**  
**STAR TRAC**  
 14410 Myford Road  
 Irvine CA 92606

STARTRAC PART NO  
**740-7244**  
 TITLE  
**ASSY, SPINNER NXT**

SCALE: 1:10 | SHEET 1 OF 2 | SHEET SIZE: B

REV  
**G**

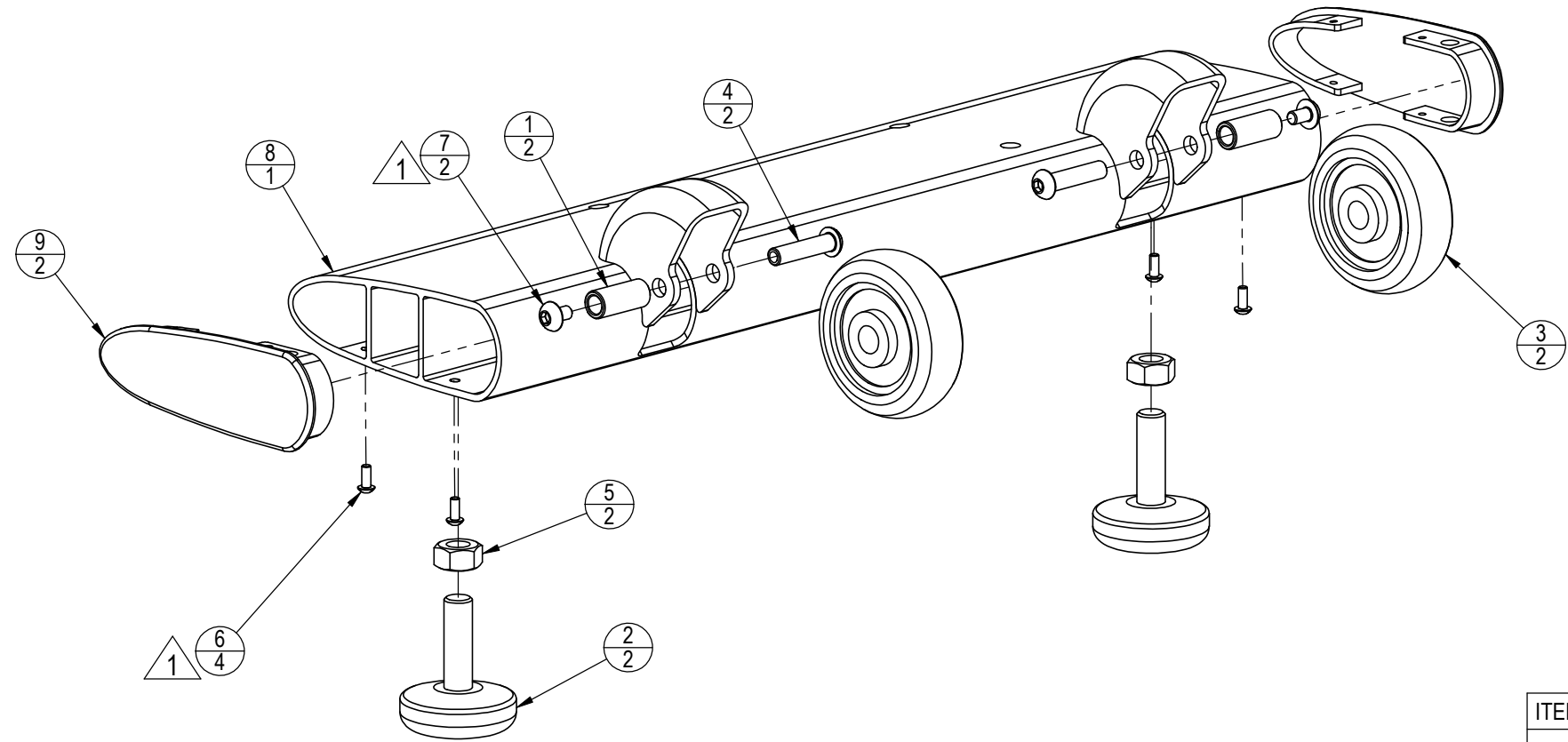
ITEM NO.	PART NUMBER	DESCRIPTION	QTY.
1	020-6603	BLOCK, FLYWHEEL ADJUSTMENT, SPINNER	2
2	020-6618	BLOCK, BRAKE, SPINNER NXT	1
3	050-2115	LABEL,MADE IN CHINA	1
4	050-2125	LABEL, SERIAL NO., OEM UNIV	1
5	050-2140	TAG, PEDAL, INSTALLATION, SPINNERS, E,P,S-SERIES BIKES	1
6	110-3318	SCREW, B18.2.3.1M-HEX CAP SCREW, M6X1.0X30--30N	2
7	110-3325	NUT, HEX, M6X1	2
8	110-3326	SCREW, M6X1, 50MM, HHM, SS	2
9	110-3328	SCREW, M6X1, 16MM, FHM, HE	4
10	110-3331	SCREW, M5X0.8, 25MM, BHC, HE, SS	1
11	110-3332	SCREW, M5X0.8, 50MM, BHC, HE, SS	1
12	110-3464	SCREW, M8X1.0X25MM, SHC, HK, BO	2
13	120-3286	WASHER, 6MMX1MM	2
14	120-3325	WASHER, FLAT, ID 8.23MM, OD 19.68MM, 2.75THK	2
15	130-1716	CHAIN, BMX-410 HX, 110 LINK	1
16	140-3322	CAP, CRANK, W/M22X1.0 SCREW	2
17	727-0002	ASSY, FRONT LEG, NXT	1
18	727-0003	ASSY, REAR LEG, NXT/E-SPINNER	1
19	727-0004	ASSY, HANDLE BAR, NXT	1
20	740-6870	ASSY, FLYWHEEL, NXT	1
21	740-7159	NUT, AXLE B/B	1
22	740-7160	B/B AXLE	1
23	740-7161	SPACER, AXLE, B/B	1
24	740-7167	WASHER, LOCK, SPLIT, M6	2
25	740-7170	BEARING, 20 ID, 42 OD, 12THK	2
26	740-7183	SCREW,M5X0.8X16,BHC,HE,SS	3
27	740-7184	SCREW,M5X0.8X30,BHC,HE,SS	2
28	740-7207	ASSY, SPINNER, BRAKE PAD	1
29	740-7220	ASSY, FRAME NXT	1
30	740-7225	ASSY, CHAIN GUARD, NXT/E-SPINNER	1
31	740-7284-01	CRANK-LEFT, NXT	1
32	740-7284-02	ASSY, WELDED, CRANK, RH	1
33	740-7291	BRACKET, CHAIN GUARD, INSIDE	1
34	740-7529	ASSY, SEAT ADJUST, NXT/e-SPINNER	1
35	740-7530	ASSY, SEAT POST, REAR, NXT/e-SPINNER	1



THE COMPONENTS ARE FOR REFERENCE ONLY AND REFER TO P/N: 740-7314 KIT, HARDWARE, NXT

<b>UNISEN, INC. DBA</b> 		14410 Myford Road Irvine CA 92606	
STARTRAC PART NO <b>740-7244</b>		REV <b>G</b>	
TITLE <b>ASSY, SPINNER NXT</b>			
SCALE: 1:12		SHEET 2 OF 2	SHEET SIZE: B

REVISION HISTORY				
REV	DATE	DESCRIPTION	ECO	BY
A	05-11-05	PRODUCTION RELEASE	11255	RKL
G	04-07-10	REMOVED: P/N 800-3729, P/N 110-3317, P/N 800-3728, P/N 800-3730, P/N 800-3727, P/N 727-0026, P/N 740-7281 ADDED: P/N 740-7011, P/N 740-7023, P/N 740-7026, P/N 740-7097, P/N 740-7173, P/N 740-7181, P/N 740-7187, P/N 740-7217 AND UPDATE NOTES	13141	VW



ITEM NO.	PART NUMBER	DESCRIPTION	QTY.
1	740-7011	AXLE SLEEVE, WHEEL, NXT/E-SPINNER	2
2	740-7023	ASSY, FOOT, W/ OVER MOLD	2
3	740-7026	WHEEL, 3" X 1" X 1/2" BORE	2
4	740-7097	BOLT, WHEEL, NXT	2
5	740-7173	NUT, 1/2-13, HEX, CS, BO	2
6	740-7181	SCREW, M4X0.7X10, BHC, HE, SS	4
7	740-7187	SCREW, M6X1.25X10, BHC, HE, SS	2
8	740-7217	FRONT LEG, WELDMENT	1
9	740-7280	END CAP	2

NOTICE OF PROPRIETARY INFORMATION  
 THIS DOCUMENT SHALL NOT BE REPRODUCED NOR SHALL THE INFORMATION CONTAINED HEREIN BE USED BY OR DISCLOSED TO OTHER EXCEPT AS EXPRESSLY AUTHORIZED BY UNISEN INC, D.B.A. STAR TRAC.

**DOCUMENT STATUS:  
 RELEASE**

CLASS OF WORK	UNLESS OTHERWISE SPECIFIED DIMS ARE IN mm. TOLERANCES FOR MEASURE OF LENGTH ARE:							
	0.5 to 3	>3 to 6	>6 to 30	>30 to 120	>120 to 400	>400 to 1000	>1000 to 2000	>2000
FINE	±0.05	±0.05	±0.1	±0.15	±0.2	±0.3	±0.5	-----
MEDIUM	±0.1	±0.1	±0.2	±0.3	±0.5	±0.8	±1.2	±2
COARSE	±0.2	±0.3	±0.5	±0.8	±1.2	±2	±3	±4
VERY COARSE	-----	±0.5	±1	±1.5	±2.5	±4	±6	±8

MATERIAL  
 SEE BOM

FINISH  
 N/A

VENDOR: **N/A** P/N: **N/A**

THIRD ANGLE PROJECTION		
DRAWN	INITIAL	DATE
CHECKED		
APPROVED		

**UNISEN, INC. DBA**  
**STAR TRAC**  
 14410 Myford Road  
 Irvine CA 92606

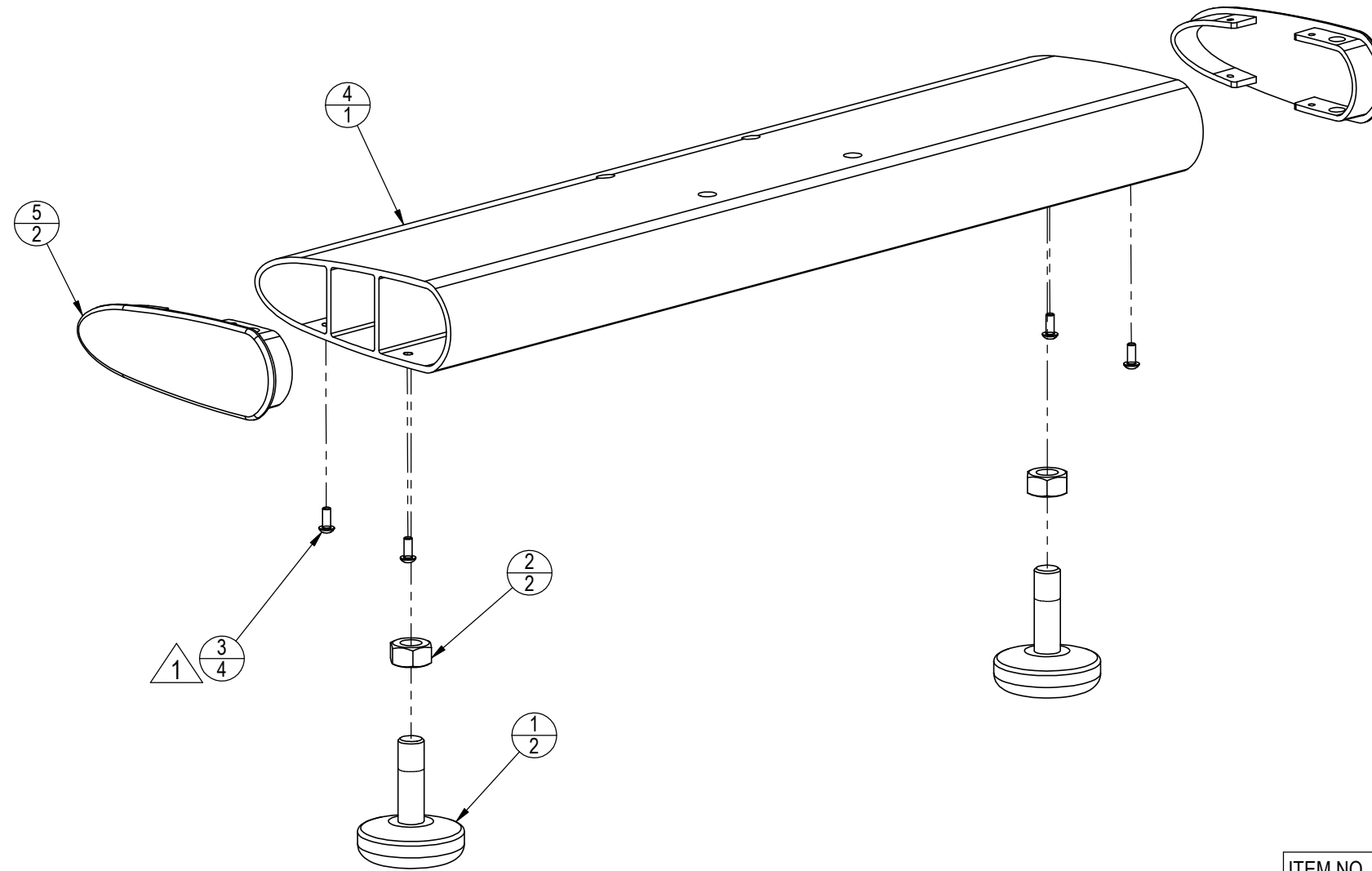
STARTRAC PART NO  
**727-0002**

TITLE  
**ASSY, FRONT LEG, NXT**

SCALE: 1:3 SHEET 1 OF 1 SHEET SIZE: B

NOTES: **G**  
 1. APPLY LOCTITE 242/262 (GREEN) OR ENGINEERING APPROVED EQUIV. BEFORE APPLICATION.

REVISION HISTORY				
REV	DATE	DESCRIPTION	ECO	BY
A	05-11-05	PRODUCTION RELEASE	11255	RKL
F	10-21-09	REPLACED ENTIRE BOM 800-3729, 110-3317 & 727-0029 WITH 740-7023 & 740-7173 QTY 2, 740-7181 QTY 4; 740-7218, 740-7281 & 740-7280 QTY 1	12264	AK
G	04-07-10	UPDATE NOTES; REPLACED P/N: 740-7281 W/P/N: 740-7280	13141	VW



NOTICE OF PROPRIETARY INFORMATION  
 THIS DOCUMENT SHALL NOT BE REPRODUCED NOR SHALL THE INFORMATION CONTAINED HEREIN BE USED BY OR DISCLOSED TO OTHER EXCEPT AS EXPRESSLY AUTHORIZED BY UNISEN INC, D.B.A. STAR TRAC.

**DOCUMENT STATUS:  
 RELEASE**

ITEM NO.	PART NUMBER	DESCRIPTION	QTY.
1	740-7023	ASSY, FOOT, W/ OVER MOLD	2
2	740-7173	NUT, 1/2-13, HEX, CS, BO	2
3	740-7181	SCREW, M4X0.7X10, BHC, HE, SS	4
4	740-7218	TUBE, REAR LEG, NXT/E-SPINNER, WELD	1
5	740-7280	END CAP	2

NOTES: 1. APPLY LOCTITE 242/262 (GREEN) OR ENGINEERING APPROVED EQUIV. BEFORE APPLICATION.

CLASS OF WORK	UNLESS OTHERWISE SPECIFIED DIMS ARE IN mm. TOLERANCES FOR MEASURE OF LENGTH ARE:							
	0.5 to 3	>3 to 6	>6 to 30	>30 to 120	>120 to 400	>400 to 1000	>1000 to 2000	>2000
FINE	±0.05	±0.05	±0.1	±0.15	±0.2	±0.3	±0.5	-----
MEDIUM	±0.1	±0.1	±0.2	±0.3	±0.5	±0.8	±1.2	±2
COARSE	±0.2	±0.3	±0.5	±0.8	±1.2	±2	±3	±4
VERY COARSE	-----	±0.5	±1	±1.5	±2.5	±4	±6	±8

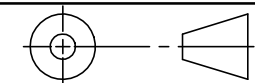
**MATERIAL**  
 SEE BOM

**FINISH**  
 N/A

VENDOR: **N/A**

P/N: **N/A**

THIRD ANGLE PROJECTION



	INITIAL	DATE
DRAWN	SJK	02/17/10
CHECKED		
APPROVED		

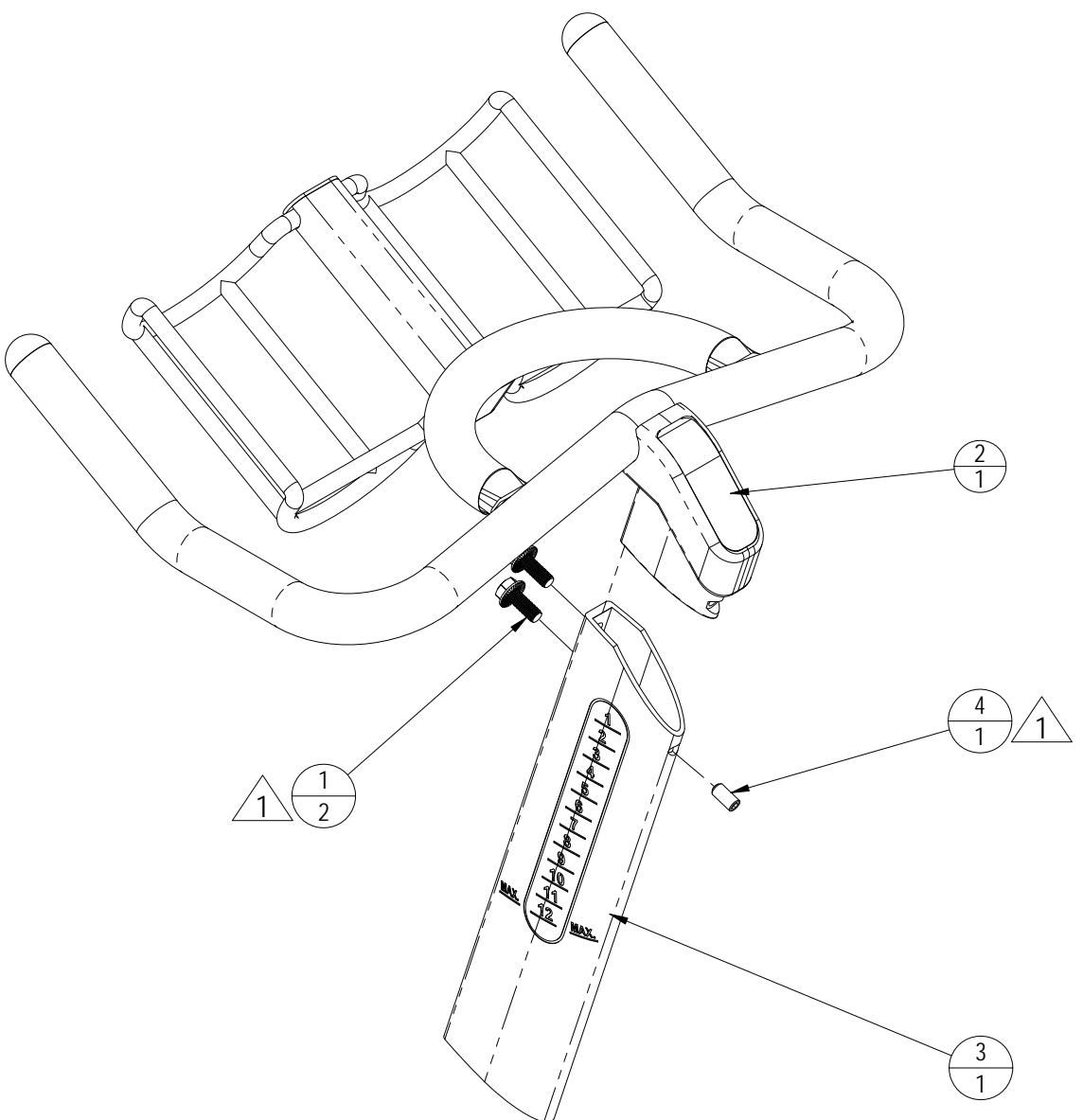
**UNISEN, INC. DBA**  
 14410 Myford Road  
 Irvine CA 92606

STARTRAC PART NO. **727-0003** REV **G**

TITLE **ASSY, REAR LEG, NXT/E-SPINNER**

SCALE: 1:3 | SHEET 1 OF 1 | SHEET SIZE: B

REVISION HISTORY				
REV	DATE	DESCRIPTION	ECO	BY
X1	08-27-04	PRELIMINARY RELEASE	--	RKL
A	02-16-05	PRODUCTION RELEASE	11228	RKL
G	05-26-10	SKIP REV. B-F; UPDATE TITLE BLOCK: REMOVE BOM: P/N 110-3273, P/N 110-3274, AND P/N 727-0051; ADDED BOM: P/N 740-6861, P/N 727-0025; ADDED BOM: P/N 110-3463, P/N 740-7295, REMOVED P/N: 727-0025-KT, REPLACE P/N: 727-0025	13142	VW
H	6/13/2011	PRODUCTION RELEASE	13468	DMM



**DOCUMENT STATUS:**

NOTICE OF PROPRIETARY INFORMATION  
 THIS DOCUMENT SHALL NOT BE REPRODUCED NOR SHALL THE INFORMATION CONTAINED HEREIN BE USED BY OR DISCLOSED TO OTHER EXCEPT AS EXPRESSLY AUTHORIZED BY UNISEN INC, D.B.A. STAR TRAC.

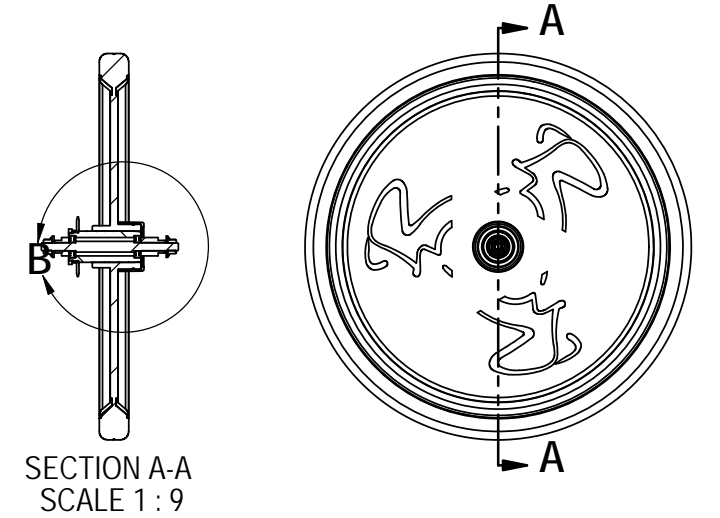
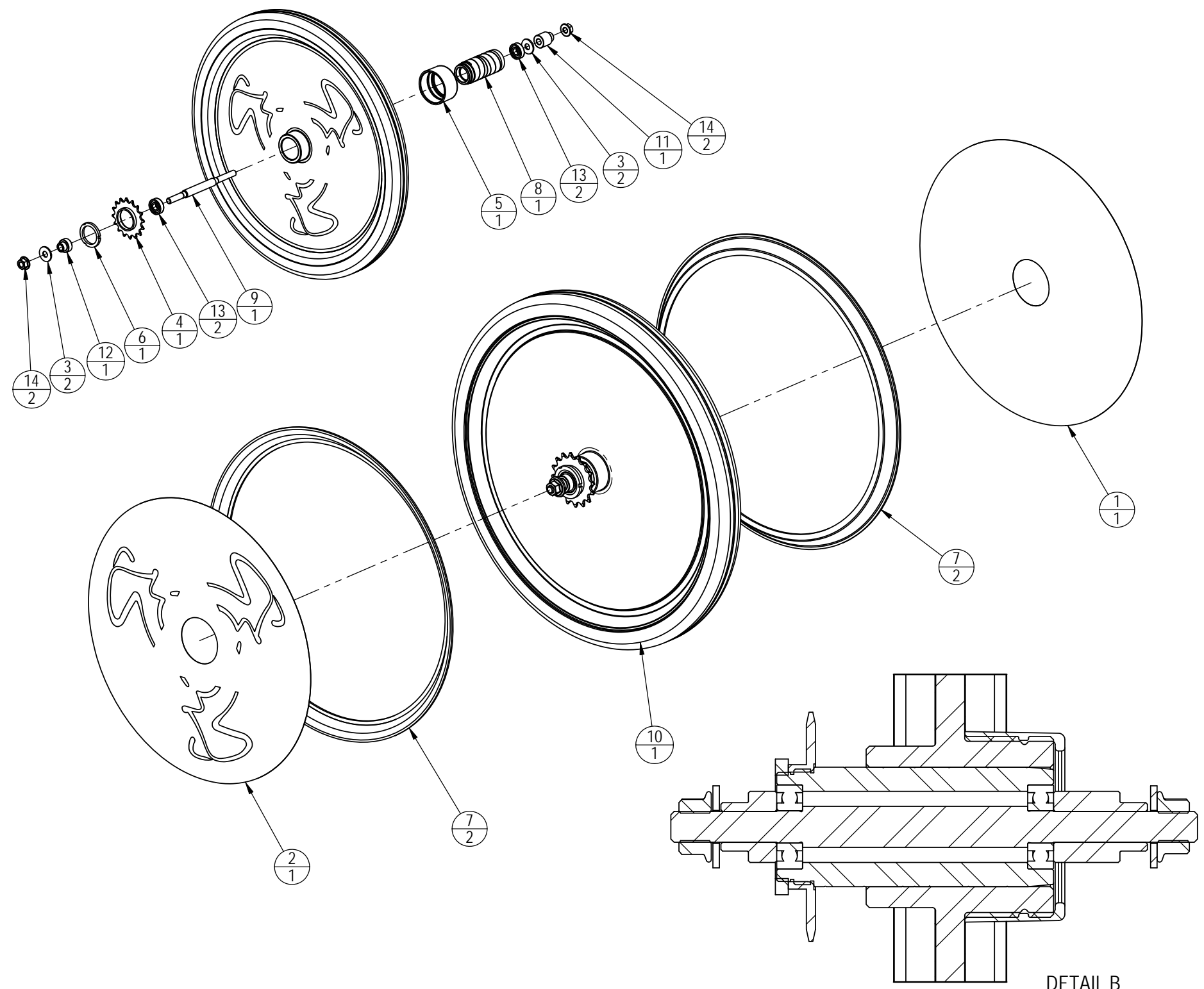
ITEM NO.	PART NUMBER	Description	QTY.
1	110-3462	SCREW,NP, FLANGE, SERRATED, M8X1.25, 20mm	2
2	727-0025	ASSY, HANDLE BAR, DIP	1
3	740-6861	POST, HANDLEBAR, NXT, 7090	1
4	740-7295	BOLT B18.3.6M - M8X1.25X16 HEX SOCKET FLAT PT. SS--N	1

**NOTES:**  
 1. ALLOW AT LEAST 12 HRS FOR THE LOCTITE TO CURE PRIOR TO USE.

CLASS OF WORK	UNLESS OTHERWISE SPECIFIED DIMS ARE IN mm. TOLERANCES FOR MEASURE OF LENGTH ARE:							ANGLES = ±2°		MATERIAL SEE BOM
	0.5 to 3	> 3 to 6	> 6 to 30	> 30 to 120	> 120 to 400	> 400 to 1000	> 1000 to 2000	> 2000	FINISH N/A	
FINE	±0.05	±0.05	±0.1	±0.15	±0.2	±0.3	±0.5	----		
MEDIUM <b>X</b>	±0.1	±0.1	±0.2	±0.3	±0.5	±0.8	±1.2	±2		
COARSE	±0.2	±0.3	±0.5	±0.8	±1.2	±2	±3	±4		
VERY COARSE	----	±0.5	±1	±1.5	±2.5	±4	±6	±8		

THIRD ANGLE PROJECTION		UNISEN, INC. DBA		14410 Myford Road Irvine CA 92606	
		<b>STAR TRAC</b>			
DRAWN	INITIAL JC	DATE 2-01-2009	STARTRAC PART NO <b>727-0004</b>	REV <b>H</b>	
CHECKED			TITLE <b>ASSY, HANDLE BAR, NXT</b>		
APPROVED			SCALE: 1:10	SHEET 1 OF 1	SHEET SIZE: B
VENDOR: <b>N/A</b>		P/N:		U.O.M.	MM

REVISION HISTORY				
REV	DATE	DESCRIPTION	ECO	BY
B		ADD BOM; ADD NOTE 3, REMOVED NOTE 1	12275	AK
F	7/9/2010	SKIPPED REV D TO E; RELEASE WITH STAR TRAC P/N.	13371	FJM



ITEM NO.	PART NUMBER	DESCRIPTION	Q'TY.
1	050-2127-01	DECAL, FLYWHEEL SPINNING, LEFT	1
2	050-2127-02	DECAL, FLYWHEEL SPINNING, RIGHT	1
3	120-3285	WASHER, ID 10.2MM, OD 25.4MM, THICK 2MM, SS	2
4	740-7013	SPROCKET WHEEL, 16T	1
5	740-7015	CAP, RUBBER, FLYWHEEL	1
6	740-7114	RETAINING NUT	1
7	740-7117	RIM, PLASTIC, FLYWHEEL	2
8	740-7118	HOUSING, BEARING, FLYWHEEL	1
9	740-7119	AXLE, FLYWHEEL, NXT	1
10	740-7120	FLYWHEEL, NXT/PRO	1
11	740-7157	SPACER, AXLE, LEFT	1
12	740-7158	SPACER, AXLE, RIGHT, SPINNER	1
13	740-7168	BEARING, 10ID, 26OD, 8THK	2
14	740-7191	NUT, 3/8-26, FLANGE, HEX, CS, BO	2

DETAIL B  
SCALE 1:1.5

**DOCUMENT STATUS:**

NOTICE OF PROPRIETARY INFORMATION  
THIS DOCUMENT SHALL NOT BE REPRODUCED NOR SHALL THE INFORMATION CONTAINED HEREIN BE USED BY OR DISCLOSED TO OTHER EXCEPT AS EXPRESSLY AUTHORIZED BY UNISEN INC. D.B.A. STAR TRAC.

CLASS OF WORK	UNLESS OTHERWISE SPECIFIED DIMS ARE IN mm. TOLERANCES FOR MEASURE OF LENGTH ARE:							ANGLES = ±2°
	0.5 to 3	>3 to 6	>6 to 30	>30 to 120	>120 to 400	>400 to 1000	>1000 to 2000	
FINE	±0.05	±0.05	±0.1	±0.15	±0.2	±0.3	±0.5	----
MEDIUM <b>X</b>	±0.1	±0.1	±0.2	±0.3	±0.5	±0.8	±1.2	±2
COARSE	±0.2	±0.3	±0.5	±0.8	±1.2	±2	±3	±4
VERY COARSE	----	±0.5	±1	±1.5	±2.5	±4	±6	±8

<b>MATERIAL</b> SEE BOM	<b>FINISH</b> N/A	<b>VENDOR:</b> N/A	<b>P/N:</b> N/A
----------------------------	----------------------	--------------------	-----------------

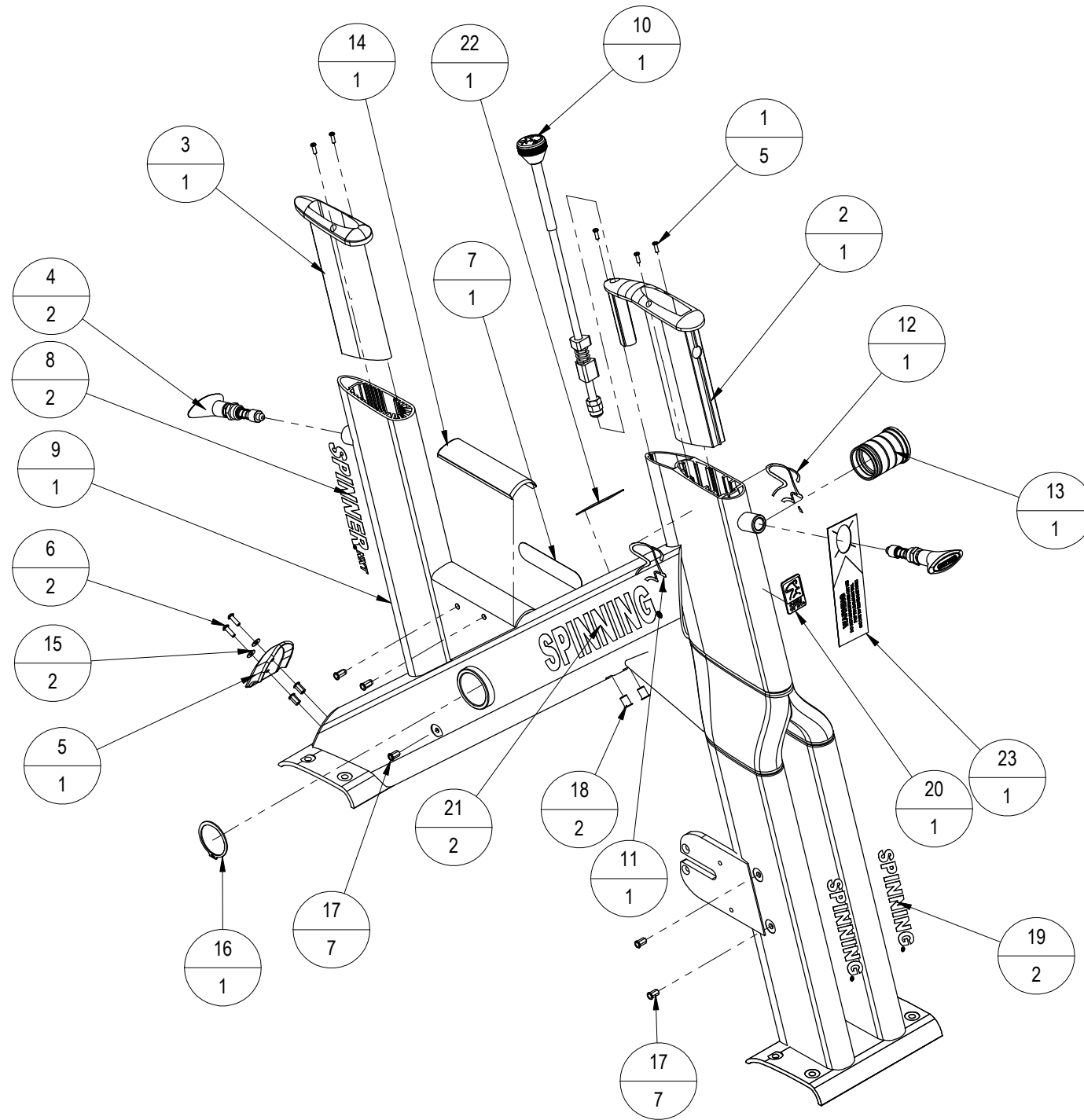
THIRD ANGLE PROJECTION			
DRAWN	INITIAL	DATE	
CHECKED			
APPROVED			
	U.O.M.	MM	

<b>UNISEN, INC. DBA</b> 		14410 Myford Road Irvine CA 92606	
STARTRAC PART NO		REV	
740-6870		F	
TITLE			
ASSY, FLYWHEEL, NXT			
SCALE: 1:6	SHEET 1 OF 1	SHEET SIZE: B	

10	9	8	7	6	5	4	3	2	1																																																																			
						<b>REVISION HISTORY</b>																																																																						
						REV	DATE	DESCRIPTION	ECO	BY																																																																		
						F	10-21-09	RELEASE FOR PRODUCTION	12264	AK																																																																		
						G	05-26-10	REMOVE VENDOR P/N	13142	VW																																																																		
H										H																																																																		
G										G																																																																		
F										F																																																																		
E										E																																																																		
D										D																																																																		
C	<table border="1" style="width:100%; border-collapse: collapse;"> <tr> <td rowspan="2" style="text-align:center;">CLASS OF WORK</td> <td style="text-align:center;">FINE</td> <td style="text-align:center;">MEDIUM</td> <td style="text-align:center;">COARSE</td> <td style="text-align:center;">VERY COARSE</td> </tr> <tr> <td></td> <td style="text-align:center;"><b>X</b></td> <td></td> <td></td> </tr> </table>					CLASS OF WORK	FINE	MEDIUM	COARSE	VERY COARSE		<b>X</b>			<b>DOCUMENT STATUS: RELEASE</b>				<table border="1" style="width:100%; border-collapse: collapse;"> <tr> <th style="text-align:center;">ITEM NO.</th> <th style="text-align:center;">PART NUMBER</th> <th style="text-align:center;">DESCRIPTION</th> <th style="text-align:center;">QTY.</th> </tr> <tr> <td style="text-align:center;">1</td> <td style="text-align:center;">740-6872</td> <td style="text-align:center;">KIT, ASSY, PAD, BRAKE, SPINNER, 7090/80/70/60</td> <td style="text-align:center;">1</td> </tr> <tr> <td style="text-align:center;">2</td> <td style="text-align:center;">740-7019</td> <td style="text-align:center;">PLATE, BRAKE PAD</td> <td style="text-align:center;">1</td> </tr> <tr> <td style="text-align:center;">3</td> <td style="text-align:center;">740-7182</td> <td style="text-align:center;">SCREW, M5X0.8X10, BHC, HE, SS</td> <td style="text-align:center;">1</td> </tr> </table>		ITEM NO.	PART NUMBER	DESCRIPTION	QTY.	1	740-6872	KIT, ASSY, PAD, BRAKE, SPINNER, 7090/80/70/60	1	2	740-7019	PLATE, BRAKE PAD	1	3	740-7182	SCREW, M5X0.8X10, BHC, HE, SS	1																																								
CLASS OF WORK	FINE	MEDIUM	COARSE	VERY COARSE																																																																								
		<b>X</b>																																																																										
ITEM NO.	PART NUMBER	DESCRIPTION	QTY.																																																																									
1	740-6872	KIT, ASSY, PAD, BRAKE, SPINNER, 7090/80/70/60	1																																																																									
2	740-7019	PLATE, BRAKE PAD	1																																																																									
3	740-7182	SCREW, M5X0.8X10, BHC, HE, SS	1																																																																									
B	<table border="1" style="width:100%; border-collapse: collapse;"> <tr> <td rowspan="7" style="text-align:center; vertical-align: middle;">UNLESS OTHERWISE SPECIFIED DIMS ARE IN mm. TOLERANCES FOR MEASURE OF LENGTH ARE: ANGLES ±2°</td> <td style="text-align:center;">0.5 to 3</td> <td style="text-align:center;">±0.05</td> <td style="text-align:center;">±0.1</td> <td style="text-align:center;">±0.2</td> <td style="text-align:center;">----</td> </tr> <tr> <td style="text-align:center;">&gt; 3 to 6</td> <td style="text-align:center;">±0.05</td> <td style="text-align:center;">±0.1</td> <td style="text-align:center;">±0.3</td> <td style="text-align:center;">±0.5</td> </tr> <tr> <td style="text-align:center;">&gt; 6 to 30</td> <td style="text-align:center;">±0.1</td> <td style="text-align:center;">±0.2</td> <td style="text-align:center;">±0.5</td> <td style="text-align:center;">±1</td> </tr> <tr> <td style="text-align:center;">&gt; 30 to 120</td> <td style="text-align:center;">±0.15</td> <td style="text-align:center;">±0.3</td> <td style="text-align:center;">±0.8</td> <td style="text-align:center;">±1.5</td> </tr> <tr> <td style="text-align:center;">&gt; 120 to 400</td> <td style="text-align:center;">±0.2</td> <td style="text-align:center;">±0.5</td> <td style="text-align:center;">±1.2</td> <td style="text-align:center;">±2.5</td> </tr> <tr> <td style="text-align:center;">&gt; 400 to 1000</td> <td style="text-align:center;">±0.3</td> <td style="text-align:center;">±0.8</td> <td style="text-align:center;">±2</td> <td style="text-align:center;">±4</td> </tr> <tr> <td style="text-align:center;">&gt; 1000 to 2000</td> <td style="text-align:center;">±0.5</td> <td style="text-align:center;">±1.2</td> <td style="text-align:center;">±3</td> <td style="text-align:center;">±6</td> </tr> <tr> <td style="text-align:center;">&gt; 2000</td> <td style="text-align:center;">----</td> <td style="text-align:center;">±2</td> <td style="text-align:center;">±4</td> <td style="text-align:center;">±8</td> </tr> </table>					UNLESS OTHERWISE SPECIFIED DIMS ARE IN mm. TOLERANCES FOR MEASURE OF LENGTH ARE: ANGLES ±2°	0.5 to 3	±0.05	±0.1	±0.2	----	> 3 to 6	±0.05	±0.1	±0.3	±0.5	> 6 to 30	±0.1	±0.2	±0.5	±1	> 30 to 120	±0.15	±0.3	±0.8	±1.5	> 120 to 400	±0.2	±0.5	±1.2	±2.5	> 400 to 1000	±0.3	±0.8	±2	±4	> 1000 to 2000	±0.5	±1.2	±3	±6	> 2000	----	±2	±4	±8	<p style="font-size: small;">NOTICE OF PROPRIETARY INFORMATION</p> <p style="font-size: x-small;">THIS DOCUMENT SHALL NOT BE REPRODUCED NOR SHALL THE INFORMATION CONTAINED HEREIN BE USED BY OR DISCLOSED TO OTHER EXCEPT AS EXPRESSLY AUTHORIZED BY UNISEN INC, D.B.A. STAR TRAC.</p>				<table border="1" style="width:100%; border-collapse: collapse;"> <tr> <td colspan="2" style="text-align:center;">THIRD ANGLE PROJECTION</td> <td colspan="2" style="text-align:center;"> </td> </tr> <tr> <td style="text-align:center;">DRAWN</td> <td style="text-align:center;">INITIAL</td> <td style="text-align:center;">DATE</td> <td style="text-align:center;">STARTRAC PART NO</td> </tr> <tr> <td></td> <td style="text-align:center;">EX</td> <td style="text-align:center;">10-13-08</td> <td style="text-align:center;"><b>740-7207</b></td> </tr> <tr> <td style="text-align:center;">CHECKED</td> <td></td> <td></td> <td style="text-align:center;">TITLE</td> </tr> <tr> <td style="text-align:center;">APPROVED</td> <td></td> <td></td> <td style="text-align:center;"><b>ASSY, SPINNER, BRAKE PAD</b></td> </tr> <tr> <td style="text-align:center;">VENDOR:</td> <td style="text-align:center;">P/N:</td> <td style="text-align:center;">U.O.M.</td> <td style="text-align:center;">MM</td> </tr> </table>		THIRD ANGLE PROJECTION				DRAWN	INITIAL	DATE	STARTRAC PART NO		EX	10-13-08	<b>740-7207</b>	CHECKED			TITLE	APPROVED			<b>ASSY, SPINNER, BRAKE PAD</b>	VENDOR:	P/N:	U.O.M.	MM
UNLESS OTHERWISE SPECIFIED DIMS ARE IN mm. TOLERANCES FOR MEASURE OF LENGTH ARE: ANGLES ±2°	0.5 to 3	±0.05	±0.1	±0.2	----																																																																							
	> 3 to 6	±0.05	±0.1	±0.3	±0.5																																																																							
	> 6 to 30	±0.1	±0.2	±0.5	±1																																																																							
	> 30 to 120	±0.15	±0.3	±0.8	±1.5																																																																							
	> 120 to 400	±0.2	±0.5	±1.2	±2.5																																																																							
	> 400 to 1000	±0.3	±0.8	±2	±4																																																																							
	> 1000 to 2000	±0.5	±1.2	±3	±6																																																																							
> 2000	----	±2	±4	±8																																																																								
THIRD ANGLE PROJECTION																																																																												
DRAWN	INITIAL	DATE	STARTRAC PART NO																																																																									
	EX	10-13-08	<b>740-7207</b>																																																																									
CHECKED			TITLE																																																																									
APPROVED			<b>ASSY, SPINNER, BRAKE PAD</b>																																																																									
VENDOR:	P/N:	U.O.M.	MM																																																																									
A	<table border="1" style="width:100%; border-collapse: collapse;"> <tr> <td colspan="2" style="text-align:center;">MATERIAL SEE BOM</td> <td colspan="2" style="text-align:center;">FINISH N/A</td> <td colspan="2" style="text-align:center;">VENDOR:</td> <td colspan="2" style="text-align:center;">P/N:</td> <td colspan="2" style="text-align:center;">U.O.M.</td> <td colspan="2" style="text-align:center;">MM</td> </tr> </table>					MATERIAL SEE BOM		FINISH N/A		VENDOR:		P/N:		U.O.M.		MM		<table border="1" style="width:100%; border-collapse: collapse;"> <tr> <td colspan="2" style="text-align:center;">UNISEN, INC. DBA</td> <td colspan="2" style="text-align:center;">14410 Myford Road</td> </tr> <tr> <td colspan="2" style="text-align:center;"></td> <td colspan="2" style="text-align:center;">Irvine CA 92606</td> </tr> <tr> <td colspan="2" style="text-align:center;">REV</td> <td colspan="2" style="text-align:center;">G</td> </tr> <tr> <td colspan="2" style="text-align:center;">SCALE: 1:3</td> <td colspan="2" style="text-align:center;">SHEET 1 OF 1</td> </tr> <tr> <td colspan="2" style="text-align:center;">SHEET SIZE: A</td> <td colspan="2"></td> </tr> </table>		UNISEN, INC. DBA		14410 Myford Road				Irvine CA 92606		REV		G		SCALE: 1:3		SHEET 1 OF 1		SHEET SIZE: A																																								
MATERIAL SEE BOM		FINISH N/A		VENDOR:		P/N:		U.O.M.		MM																																																																		
UNISEN, INC. DBA		14410 Myford Road																																																																										
		Irvine CA 92606																																																																										
REV		G																																																																										
SCALE: 1:3		SHEET 1 OF 1																																																																										
SHEET SIZE: A																																																																												
10	9	8	7	6	5	4	3	2	1																																																																			

NOTES:  
1. FIX P/N:740-7292 ONTO P/N:740-7208 WITH DOUBLE STICKY TAPE

REVISION HISTORY				
REV	DATE	DESCRIPTION	ECO	BY
G	03-24-10	UPDATED 740-7208; REMOVED 1 740-7475	13150	DMM



ITEM NO.	PART NUMBER	DESCRIPTION	QTY.
1	110-3272	BOLT, B18.0.7M-M4X0.7X12 TYPE I CROSS	5
2	727-0008	SLEEVE, HANDLEBAR POST, SPINNER NXT	1
3	727-0009	SLEEVE, SEATPOST, SPINNER, NXT	1
4	727-0010	ASSY, POP PIN, NXT/E-SPINNER	2
5	727-0012	PAD, STRETCH, NXT/E-SPINNER	1
6	740-7183	SCREW, M5X0.8X16, BHC, HE, SS	2
7	740-7193	LABEL, LOGO, STAR TRAC, SPINNER	1
8	740-7204	LOGO, SPINNING NXT, SEAT TUBE	2
9	740-7208	ASSY, FRAME NXT, WELDMENT	1
10	740-7223	ASSY, BRAKE, ADJUSTMENT KNOB	1
11	740-7242	LOGO, SPINMAN, 62X70MM, LF	1
12	740-7243	LOGO, SPINMAN, 62X70MM, RG	1
13	740-7246	SPACER, NXT FRAME, HUB	1
14	740-7292	STEP, PROTECTOR, NXT/E-SPINNER	1
15	740-7293	WASHER, ID 5.5MM, OD 13MM, SS	2
16	740-7302	SPRING RING, B27.7M-3AM1-48	1
17	740-7303	NUT, RIVET, HEX, M5X0.8	7
18	740-7304	NUT, RIVET, M6	2
19	740-7409	DECAL, SPINNING, FORKS	2
20	740-7412	LOGO, SPINNER, HEAD BADGE	1
21	740-7413	LOGO, SPINNING, MAIN TUBE	2
22	740-7419	STICKER, WARNING	1
23	740-7475	DECAL, WARNING	1

**DOCUMENT STATUS:  
RELEASE**

NOTICE OF PROPRIETARY INFORMATION

THIS DOCUMENT SHALL NOT BE REPRODUCED NOR SHALL THE INFORMATION CONTAINED HEREIN BE USED BY OR DISCLOSED TO OTHER EXCEPT AS EXPRESSLY AUTHORIZED BY UNISEN INC, D.B.A. STAR TRAC.

CLASS OF WORK	UNLESS OTHERWISE SPECIFIED DIMS ARE IN mm. TOLERANCES FOR MEASURE OF LENGTH ARE:							ANGLES = ±2°
	0.5 to 3	>3 to 6	>6 to 30	>30 to 120	>120 to 400	>400 to 1000	>1000 to 2000	
FINE	±0.05	±0.05	±0.1	±0.15	±0.2	±0.3	±0.5	----
MEDIUM	±0.1	±0.1	±0.2	±0.3	±0.5	±0.8	±1.2	±2
COARSE	±0.2	±0.3	±0.5	±0.8	±1.2	±2	±3	±4
VERY COARSE	----	±0.5	±1	±1.5	±2.5	±4	±6	±8

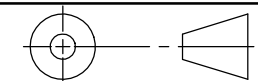
MATERIAL  
SEE BOM

FINISH  
N/A

VENDOR: N/A

P/N:

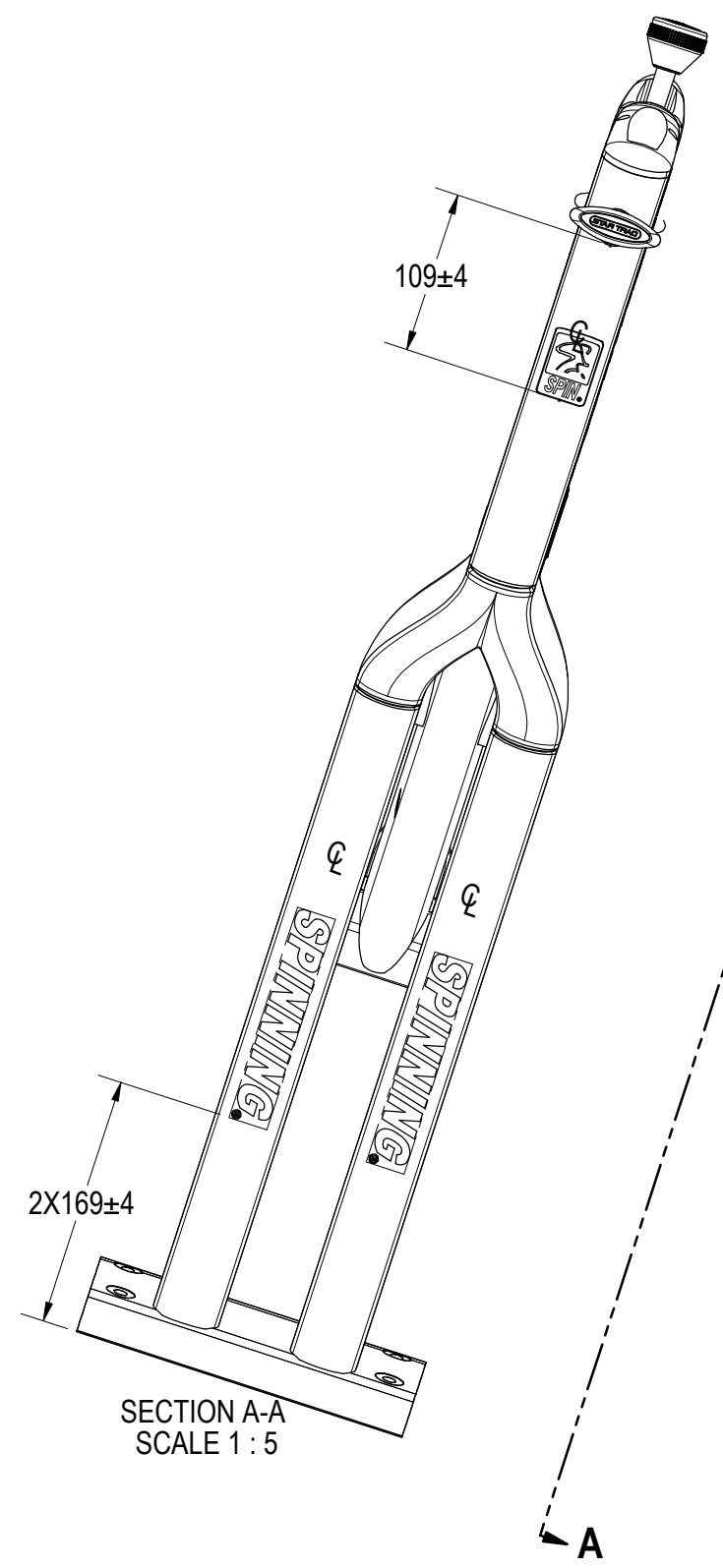
THIRD ANGLE PROJECTION



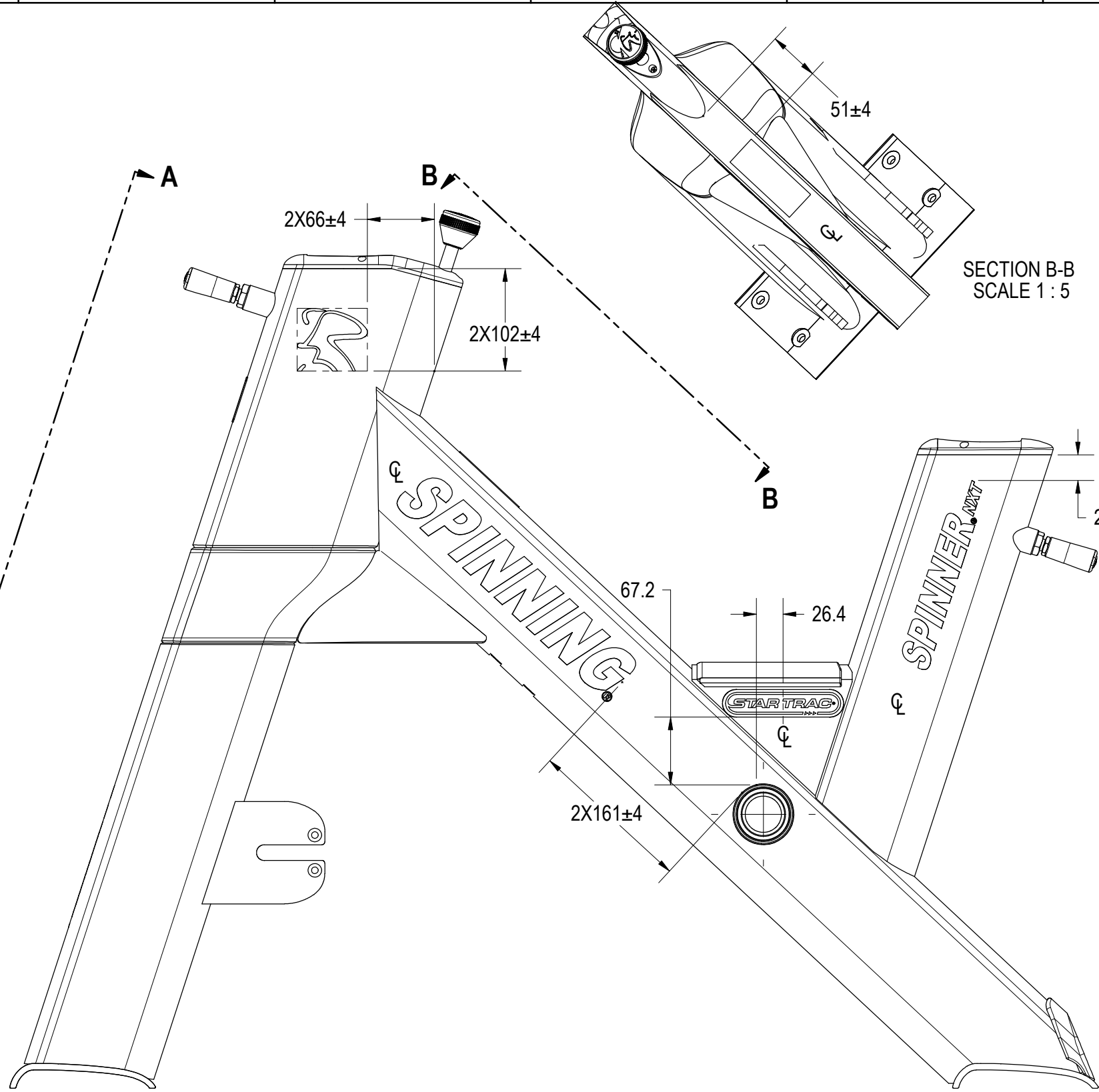
DRAWN	INITIAL JC	DATE 10-21-2008
CHECKED		
APPROVED		

<b>UNISEN, INC. DBA</b>		14410 Myford Road Irvine CA 92606	
<b>STAR TRAC</b>			
STARTRAC PART NO	<b>740-7220</b>		REV <b>G</b>
TITLE <b>ASSY, FRAME NXT</b>			
SCALE: 1:20	SHEET 1 OF 2	SHEET SIZE: B	

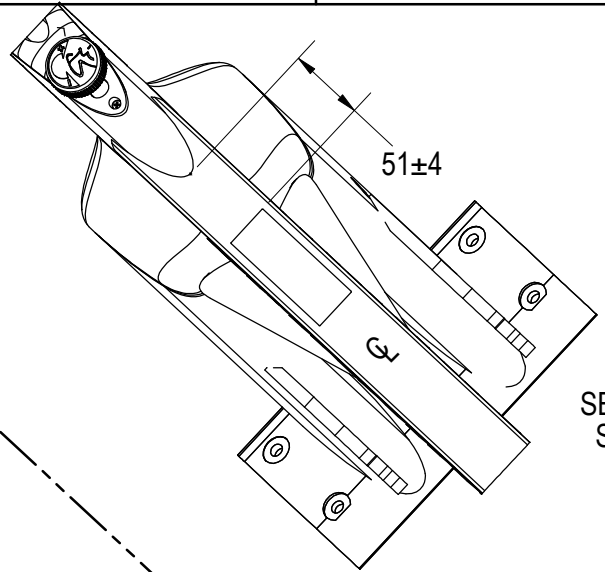





SECTION A-A  
SCALE 1:5

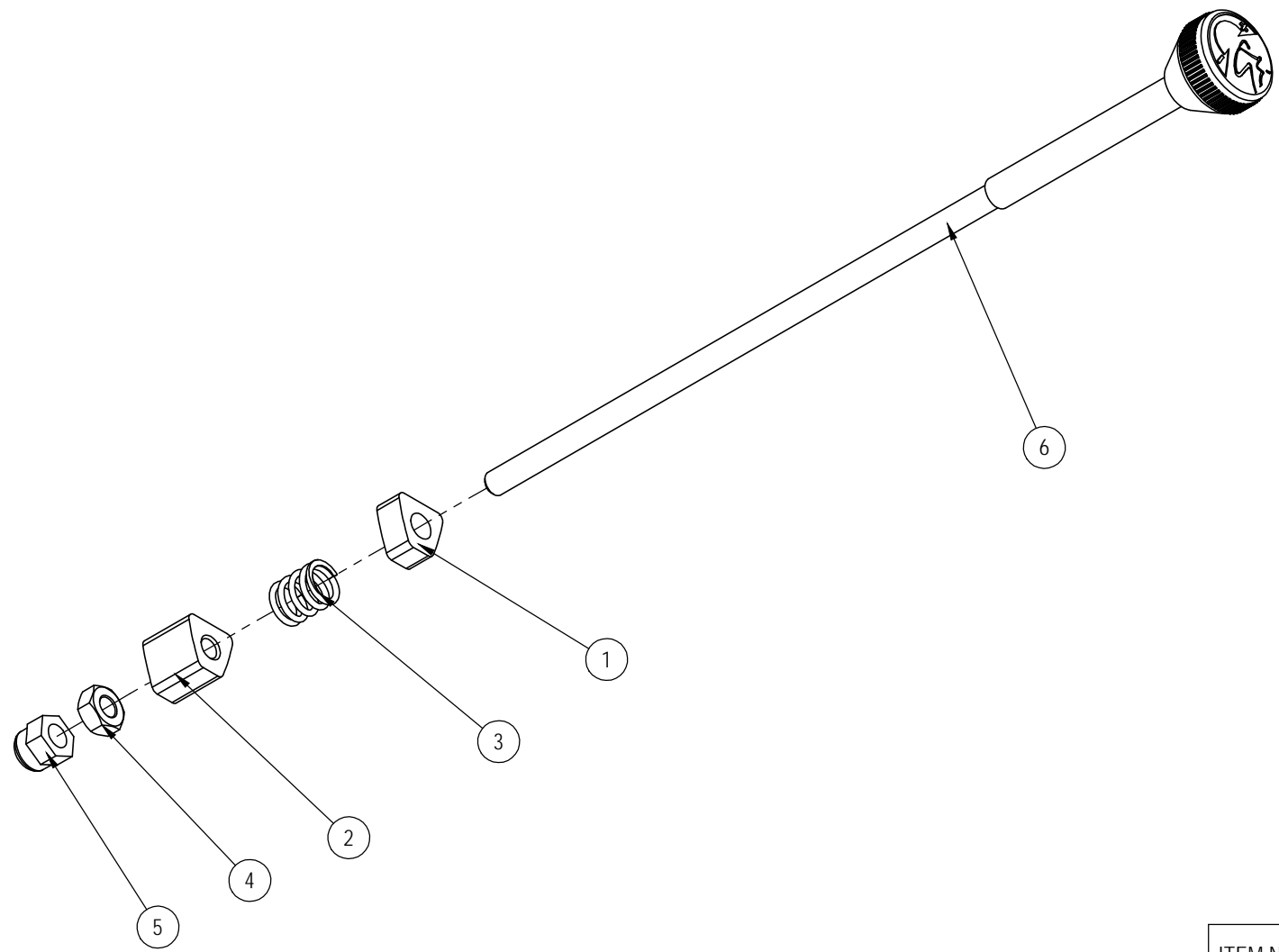


SECTION B-B  
SCALE 1:5



<b>UNISEN, INC. DBA</b> 		14410 Myford Road Irvine CA 92606	
STARTRAC PART NO <b>740-7220</b>		REV <b>G</b>	
TITLE <b>ASSY, FRAME NXT</b>			
SCALE: 1:20	SHEET 2 OF 2	SHEET SIZE: B	

REVISION HISTORY				
REV	DATE	DESCRIPTION	ECO	BY
F	10-21-09	RELEASE FOR PRODUCTION	12269	AK



ITEM NO.	PART NUMBER	DESCRIPTION	Q'TY.
1	140-3287	CUSHION, BRAKE KNOB	1
2	140-3288	NUT, BLOCK, BRAKE, SPINNER NXT	1
3	740-7124	SPRING, BRAKE KNOB	1
4	740-7178	NUT, M10X1.5, HE, SS	1
5	740-7189	NUT, M10X1.5, ACORN, SS	1
6	740-7219	KNOB, TENSION, BRAKE, NXT/E-SPINNER	1

**DOCUMENT STATUS:  
RELEASE**

NOTICE OF PROPRIETARY INFORMATION  
THIS DOCUMENT SHALL NOT BE REPRODUCED NOR SHALL THE INFORMATION CONTAINED HEREIN BE USED BY OR DISCLOSED TO OTHER EXCEPT AS EXPRESSLY AUTHORIZED BY UNISEN INC., D.B.A. STAR TRAC.

CLASS OF WORK	UNLESS OTHERWISE SPECIFIED DIMS ARE IN mm. ANGLES = ±2° TOLERANCES FOR MEASURE OF LENGTH ARE:							
	0.5 to 3	> 3 to 6	> 6 to 30	> 30 to 120	> 120 to 400	> 400 to 1000	> 1000 to 2000	> 2000
FINE	±0.05	±0.05	±0.1	±0.15	±0.2	±0.3	±0.5	-----
MEDIUM	±0.1	±0.1	±0.2	±0.3	±0.5	±0.8	±1.2	±2
COARSE	±0.2	±0.3	±0.5	±0.8	±1.2	±2	±3	±4
VERY COARSE	-----	±0.5	±1	±1.5	±2.5	±4	±6	±8

**MATERIAL**  
SEE BOM

**FINISH**  
N/A

**VENDOR:** N/A      **P/N:** 321-4-2300-00

THIRD ANGLE PROJECTION		
	INITIAL	DATE
DRAWN	JC	10-20-2008
CHECKED		
APPROVED		
	U.O.M.	MM

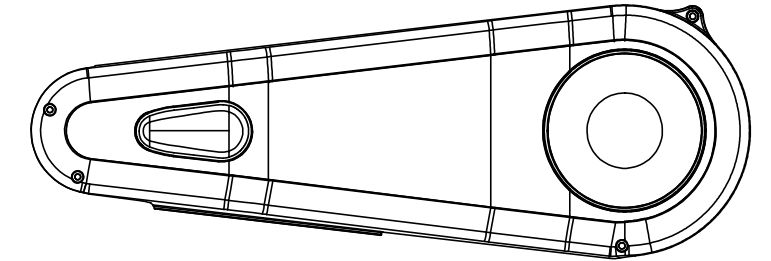
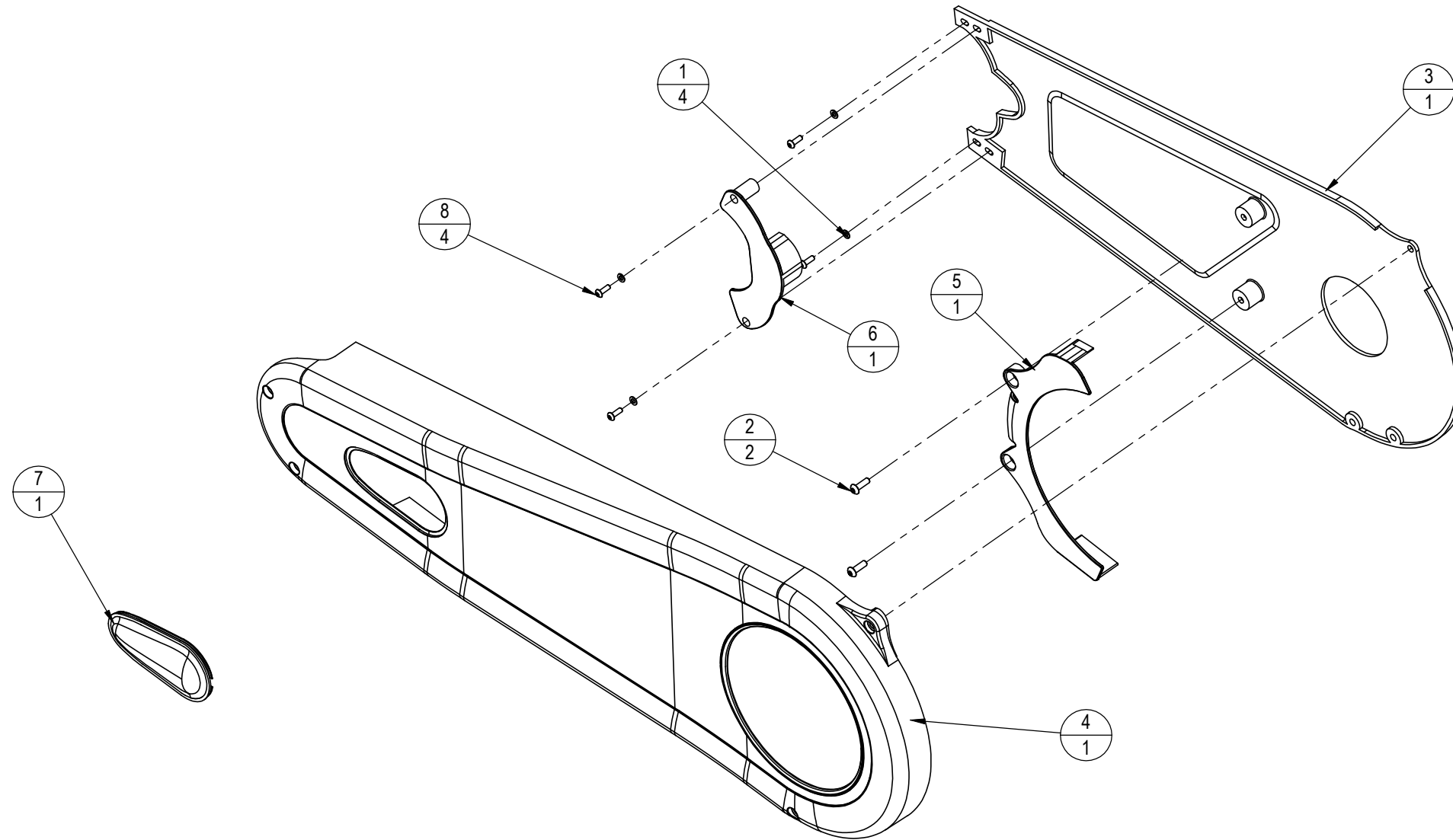
**UNISEN, INC. DBA**  
**STAR TRAC**  
14410 Myford Road  
Irvine CA 92606

STARTRAC PART NO: **740-7223**      REV: **F**

TITLE: **ASSY, BRAKE, ADJUSTMENT KNOB**

SCALE: 1:2.5    SHEET 1 OF 1    SHEET SIZE: B

REVISION HISTORY				
REV	DATE	DESCRIPTION	ECO	BY
F	10-21-09	RELEASE FOR PRODUCTION	12272	AK
G	05-26-10	REMOVE VENDOR P/N	13142	VW



ITEM NO.	PART NUMBER	DESCRIPTION	QTY.
1	740-7163	WASHER, FLAT, M4, SS	4
2	740-7183	SCREW, M5X0.8X16, BHC, HE, SS	2
3	740-7286	CHAIN GUARD, INSIDE, NXT/E-SPINNER	1
4	740-7287	CHAIN GUARD, OUTSIDE, NXT/E-SPINNER	1
5	740-7288	FINGERGUARD, CRANK, NXT/E-SPINNER	1
6	740-7289	FINGERGUARD, FLYWHEEL, SPROCKET	1
7	740-7290	ADJUSTMENT CAP, CHAIN, GUARD	1
8	740-7300	SCREW, B18.3.4M-4X0.7X12 SBHCS--N	4

**DOCUMENT STATUS:  
RELEASE**

NOTICE OF PROPRIETARY INFORMATION

THIS DOCUMENT SHALL NOT BE REPRODUCED NOR SHALL THE INFORMATION CONTAINED HEREIN BE USED BY OR DISCLOSED TO OTHER EXCEPT AS EXPRESSLY AUTHORIZED BY UNISEN INC, D.B.A. STAR TRAC.

CLASS OF WORK	UNLESS OTHERWISE SPECIFIED DIMS ARE IN mm. TOLERANCES FOR MEASURE OF LENGTH ARE:							ANGLES = ±2°		
	0.5 to 3	> 3 to 6	> 6 to 30	> 30 to 120	> 120 to 400	> 400 to 1000	> 1000 to 2000	> 2000		
FINE	±0.05	±0.05	±0.1	±0.15	±0.2	±0.3	±0.5	----		
MEDIUM	±0.1	±0.1	±0.2	±0.3	±0.5	±0.8	±1.2	±2		
COARSE	±0.2	±0.3	±0.5	±0.8	±1.2	±2	±3	±4		
VERY COARSE	----	±0.5	±1	±1.5	±2.5	±4	±6	±8		

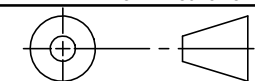
**MATERIAL**  
SEE BOM

**FINISH**  
N/A

VENDOR: **N/A**

P/N:

THIRD ANGLE PROJECTION



DRAWN	INITIAL JC	DATE 10/13/08
CHECKED		
APPROVED		

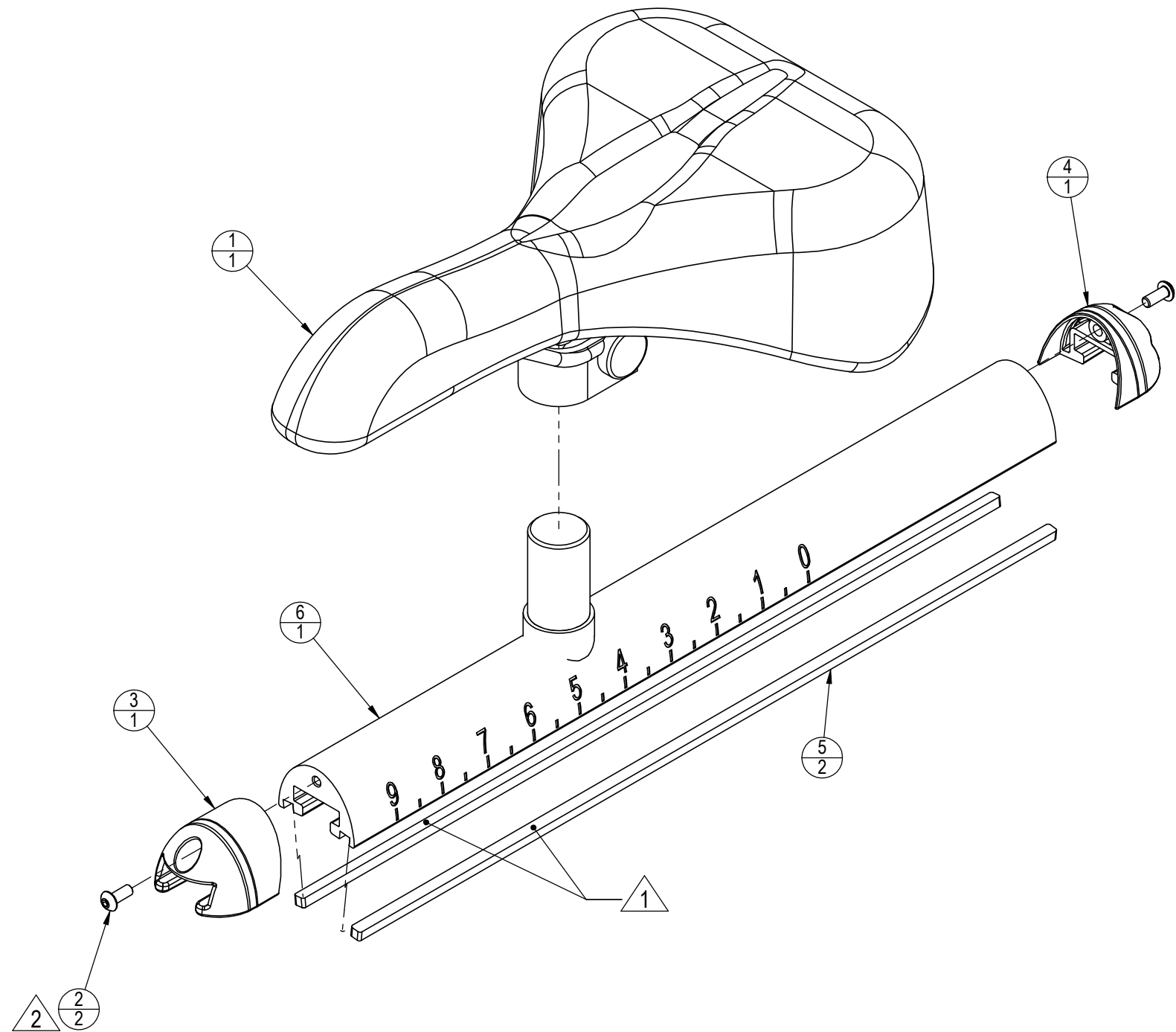
**UNISEN, INC. DBA** 14410 Myford Road  
Irvine CA 92606  
**STAR TRAC**

STARTRAC PART NO. **740-7225** REV **G**

TITLE **ASSY, CHAIN GUARD, NXT/E-SPINNER**

SCALE: 1:5 SHEET 1 OF 1 SHEET SIZE: B

REVISION HISTORY				
REV	DATE	DESCRIPTION	ECO	BY
A	04-07-10	PRODUCTION RELEASE	13141	SJK



NOTICE OF PROPRIETARY INFORMATION  
 THIS DOCUMENT SHALL NOT BE REPRODUCED NOR  
 SHALL THE INFORMATION CONTAINED HEREIN BE USED  
 BY OR DISCLOSED TO OTHER EXCEPT AS EXPRESSLY  
 AUTHORIZED BY UNISEN INC, D.B.A. STAR TRAC.

**DOCUMENT STATUS:  
 RELEASE**

ITEM NO.	PART NUMBER	DESCRIPTION	QTY.
1	727-0022	SADDLE, SPIN, NXT, E, ELITE	1
2	740-7181	SCREW, M4X0.7X10, BHC, HE, SS	2
3	740-7272	ENDCAP, FRONT, SEAT SLIDER	1
4	740-7273	ENDCAP, REAR, SEAT SLIDER	1
5	740-7274	SHIM, SEAT SLIDER, RIGHT, NXT	2
6	740-7527	SEAT SLIDER, RAIL, TOP, WELDMENT	1

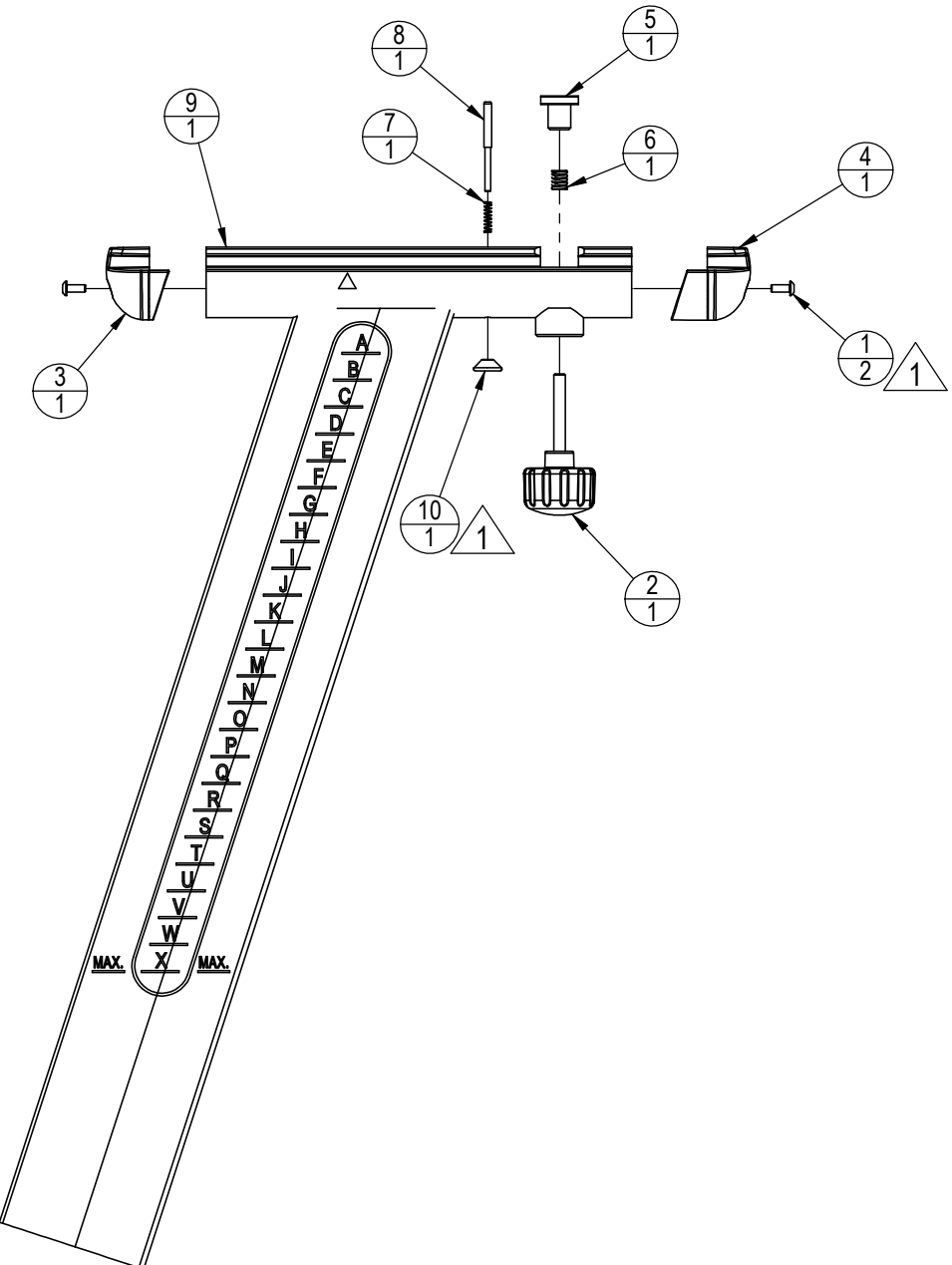
- NOTES:
1. APPLY LOCTITE 411 OR ENGINEERING APPROVED EQUIV. BEFORE APPLICATION OF P/N: 740-7274.
  2. APPLY LOCTITE 290 (GREEN) OR ENGINEERING APPROVED EQUIV. BEFORE APPLICATION OF P/N: 740-7181.

CLASS OF WORK	UNLESS OTHERWISE SPECIFIED DIMS ARE IN mm. TOLERANCES FOR MEASURE OF LENGTH ARE:							
	0.5 to 3	>3 to 6	>6 to 30	>30 to 120	>120 to 400	>400 to 1000	>1000 to 2000	>2000
FINE	±0.05	±0.05	±0.1	±0.15	±0.2	±0.3	±0.5	-----
MEDIUM	±0.1	±0.1	±0.2	±0.3	±0.5	±0.8	±1.2	±2
COARSE	±0.2	±0.3	±0.5	±0.8	±1.2	±2	±3	±4
VERY COARSE	-----	±0.5	±1	±1.5	±2.5	±4	±6	±8

<b>MATERIAL</b> SEE BOM		<b>THIRD ANGLE PROJECTION</b> 	
<b>FINISH</b> N/A		DRAWN	DATE
VENDOR: <b>N/A</b>		SJK	01/11/10
P/N: <b>N/A</b>		CHECKED	
		APPROVED	
		U.O.M.	mm

<b>UNISEN, INC. DBA</b> 		14410 Myford Road Irvine CA 92606	
STARTRAC PART NO <b>740-7529</b>		REV <b>A</b>	
TITLE <b>ASSY, SEAT ADJUST, NXT/e-SPINNER</b>			
SCALE: 1:2	SHEET 1 OF 1	SHEET SIZE: B	

REVISION HISTORY				
REV	DATE	DESCRIPTION	ECO	BY
A	04-07-10	PRODUCTION RELEASE	13141	SJK



ITEM NO.	PART NUMBER	DESCRIPTION	QTY.
1	740-7181	SCREW, M4X0.7X10, BHC, HE, SS	2
2	740-7216	ASSY, KNOB, SEAT SLIDER	1
3	740-7260	ENDCAP, FRONT, SEAT RAIL	1
4	740-7261	ENDCAP, REAR, SEAT RAIL	1
5	740-7267	HOLDING NUT, SEAT SLIDER, NXT/E-SPINNER	1
6	740-7268	SPRING, TENSION HANDLE, NXT/E-SPINNER	1
7	740-7271	SPRING, SEAT SLIDER, NXT	1
8	740-7526	PIN, STOP, SEAT SLIDER	1
9	740-7528	SEAT POST, REAR, WELDMENT	1
10	740-7531	HANDLE, STOP, SEAT SLIDER	1

NOTICE OF PROPRIETARY INFORMATION  
 THIS DOCUMENT SHALL NOT BE REPRODUCED NOR SHALL THE INFORMATION CONTAINED HEREIN BE USED BY OR DISCLOSED TO OTHER EXCEPT AS EXPRESSLY AUTHORIZED BY UNISEN INC, D.B.A. STAR TRAC.

**DOCUMENT STATUS:  
 RELEASE**

CLASS OF WORK	UNLESS OTHERWISE SPECIFIED DIMS ARE IN mm. TOLERANCES FOR MEASURE OF LENGTH ARE:							
	0.5 to 3	> 3 to 6	> 6 to 30	> 30 to 120	> 120 to 400	> 400 to 1000	> 1000 to 2000	> 2000
FINE	±0.05	±0.05	±0.1	±0.15	±0.2	±0.3	±0.5	-----
MEDIUM	±0.1	±0.1	±0.2	±0.3	±0.5	±0.8	±1.2	±2
COARSE	±0.2	±0.3	±0.5	±0.8	±1.2	±2	±3	±4
VERY COARSE	-----	±0.5	±1	±1.5	±2.5	±4	±6	±8

<b>MATERIAL</b> SEE BOM	<b>THIRD ANGLE PROJECTION</b> 
<b>FINISH</b> N/A	<b>UNISEN, INC. DBA</b> <b>STAR TRAC</b> 14410 Myford Road Irvine CA 92606
<b>VENDOR: N/A</b>	<b>STARTRAC PART NO</b> <b>740-7530</b>
<b>P/N: N/A</b>	<b>REV</b> <b>A</b>
	<b>TITLE</b> ASSY, SEAT POST, REAR, NXT/e-SPINNER
	<b>SCALE: 1:4</b>   <b>SHEET 1 OF 1</b>   <b>SHEET SIZE: B</b>

NOTES:  
 1. APPLY LOCTITE 290 (GREEN) OR ENGINEERING APPROVED EQUIV. BEFORE APPLICATION OF P/N: 740-7181 AND 740-7526.

Grid coordinates: 9, 8, 7, 6, 5, 4, 3, 2, 1 (horizontal); J, I, H, G, F, E, D, C, B, A (vertical)