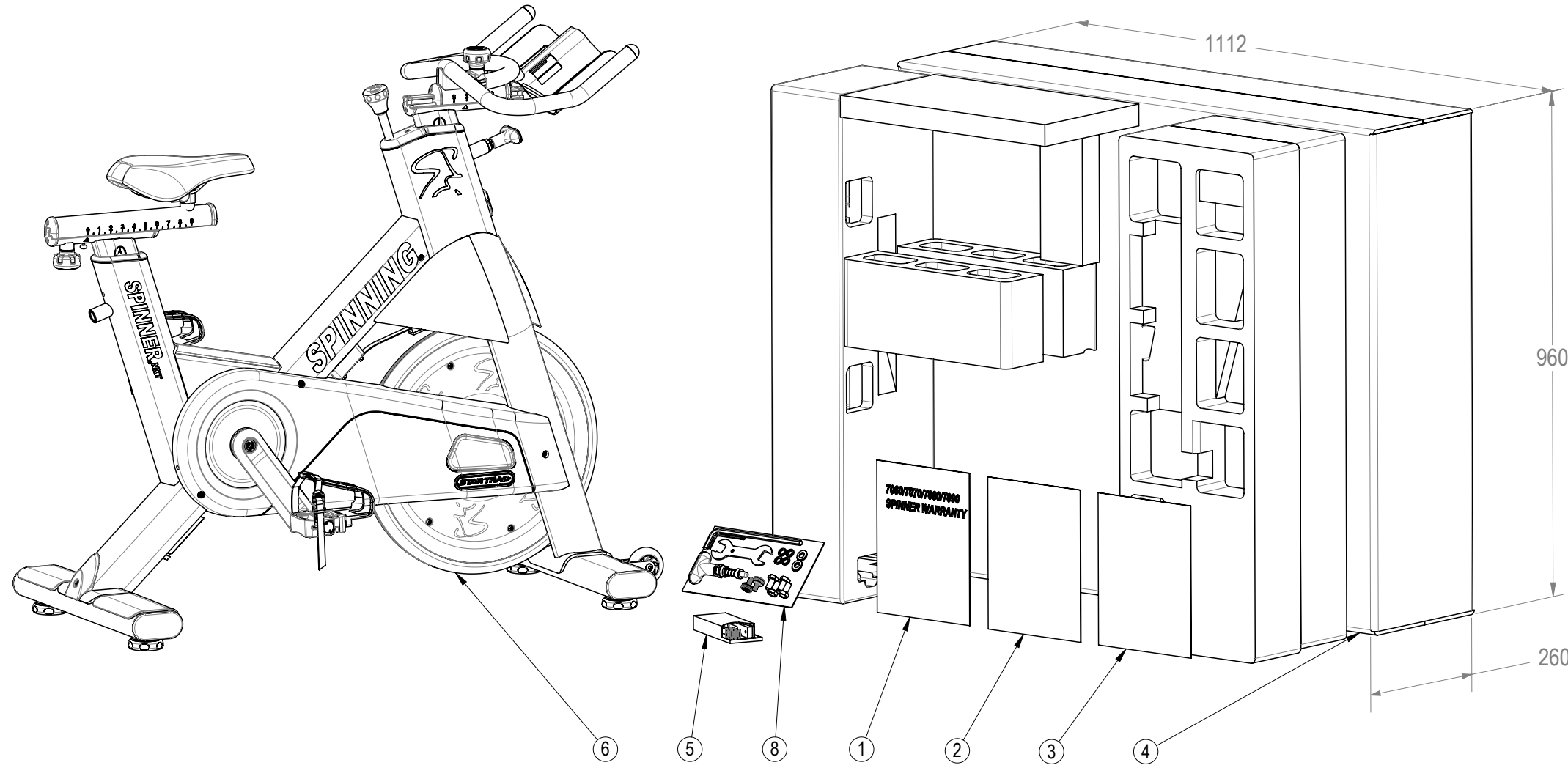


REVISION HISTORY				
REV	DATE	DESCRIPTION	ECO	BY
A	8/5/2011	PRODUCTION RELEASE	13511	DMM
B	2/1/2012	UPDATED HANBLE BAR AND SEAT ASSY, ADDED TOOLKIT	13652	DMM



ITEM NO.	PART NUMBER	DESCRIPTION	QTY.
1	620-7831	CARD,REGIST.,WARRANTY, SPINNER, 7060/7070/7080/7090	1
2	620-8006	MANUAL, SP INSTALLATION, NXT	1
3	620-8068	USER MANUAL, SPINNER PRO/NXT/BLADE	1
4	740-7316	CARTON, SPINNER NXT	1
5	740-7323	KIT, SPARE, BRAKE PAD	1
6	740-7561	ASSY, SPINNER, NXT	1
7	740-8182	STYROFOAM, PACKING, E-SP	1
8	740-8267	KIT, TOOL, INSTALL, NXT	1


NOTICE OF PROPRIETARY INFORMATION
 THIS DOCUMENT SHALL NOT BE REPRODUCED NOR SHALL THE INFORMATION CONTAINED HEREIN BE USED BY OR DISCLOSED TO OTHER EXCEPT AS EXPRESSLY AUTHORIZED BY CORE INDUSTRIES INC, D.B.A. STAR TRAC.

DOCUMENT STATUS:

NOTES:
 1. SHIPPING WEIGHT: 145 LBS.

CLASS OF WORK	UNLESS OTHERWISE SPECIFIED DIMS ARE IN mm. TOLERANCES FOR MEASURE OF LENGTH ARE:							ANGLES = ±2°
	0.5 to 3	> 3 to 6	> 6 to 30	> 30 to 120	> 120 to 400	> 400 to 1000	> 1000 to 2000	
FINE	±0.05	±0.05	±0.1	±0.15	±0.2	±0.3	±0.5	----
MEDIUM	±0.1	±0.1	±0.2	±0.3	±0.5	±0.8	±1.2	±2
COARSE	X ±0.2	±0.3	±0.5	±0.8	±1.2	±2	±3	±4
VERY COARSE	----	±0.5	±1	±1.5	±2.5	±4	±6	±8

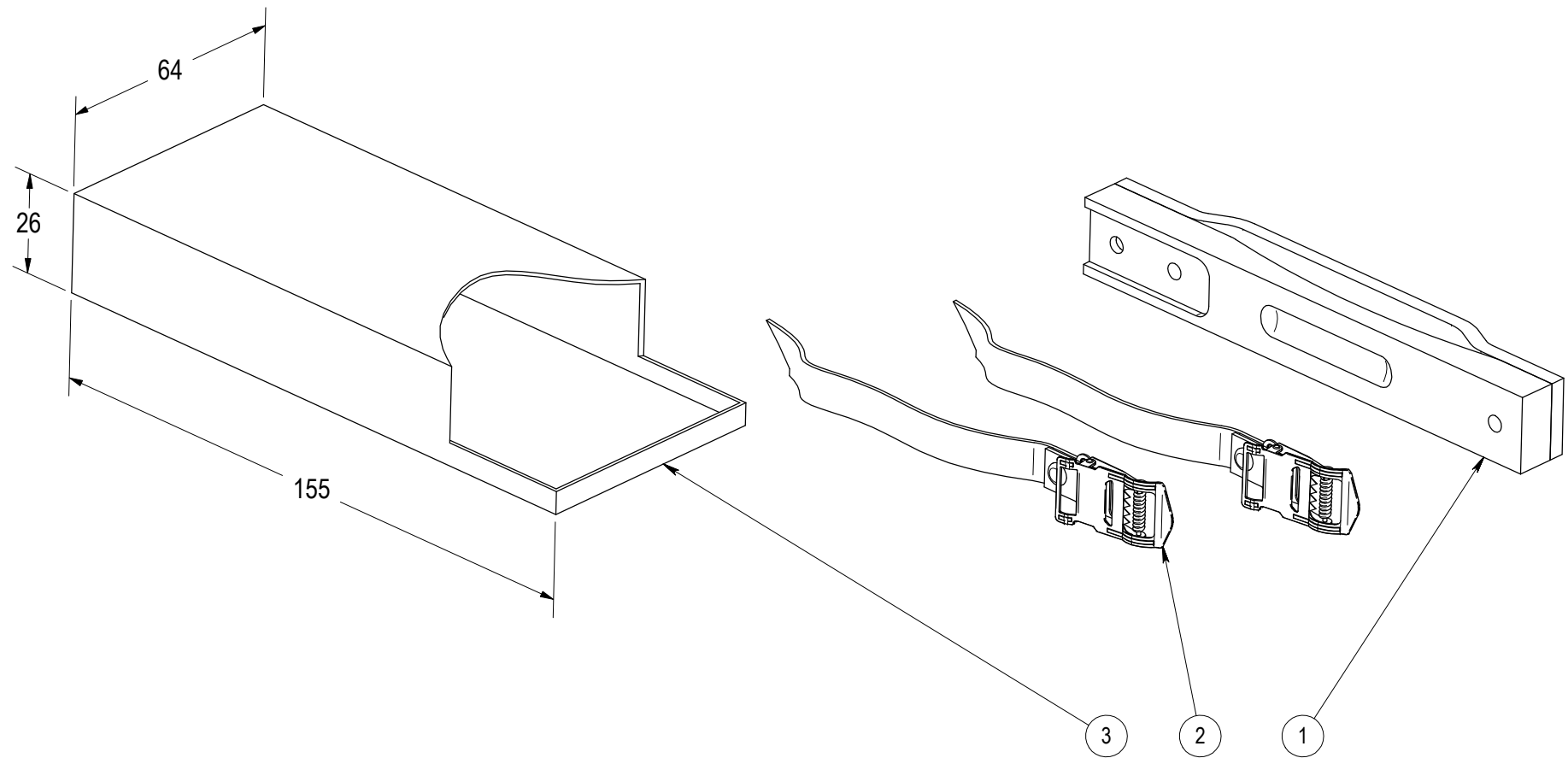
MATERIAL SEE BOM
 FINISH N/A
 VENDOR: N/A P/N: N/A

THIRD ANGLE PROJECTION

 DRAWN: INITIAL DMM DATE: 08/05/2011
 CHECKED: APPROVED: U.O.M. MM

CORE IND INC., DBA 14410 Myford Road Irvine CA 92606

 STAR TRAC PART NO. 9-7170-MINTPO REV B
 TITLE SPINNER NXT
 SCALE: 1:10 | SHEET 1 OF 1 | SHEET SIZE: B

REVISION HISTORY				
REV	DATE	DESCRIPTION	ECO	BY
G	04-07-10	UPDATE EXPLODED VIEW, UPDATE BOM	13141	VW



ITEM NO.	PART NUMBER	DESCRIPTION	QTY.
1	740-6872	KIT, ASSY, PAD, BRAKE, SPINNER, 7090/80/70/60	1
2	740-7307	STRAP, PEDAL, PRO	2
3	740-7323-001	CARTON, SPARE KIT	1

**DOCUMENT STATUS:
RELEASE**

NOTICE OF PROPRIETARY INFORMATION

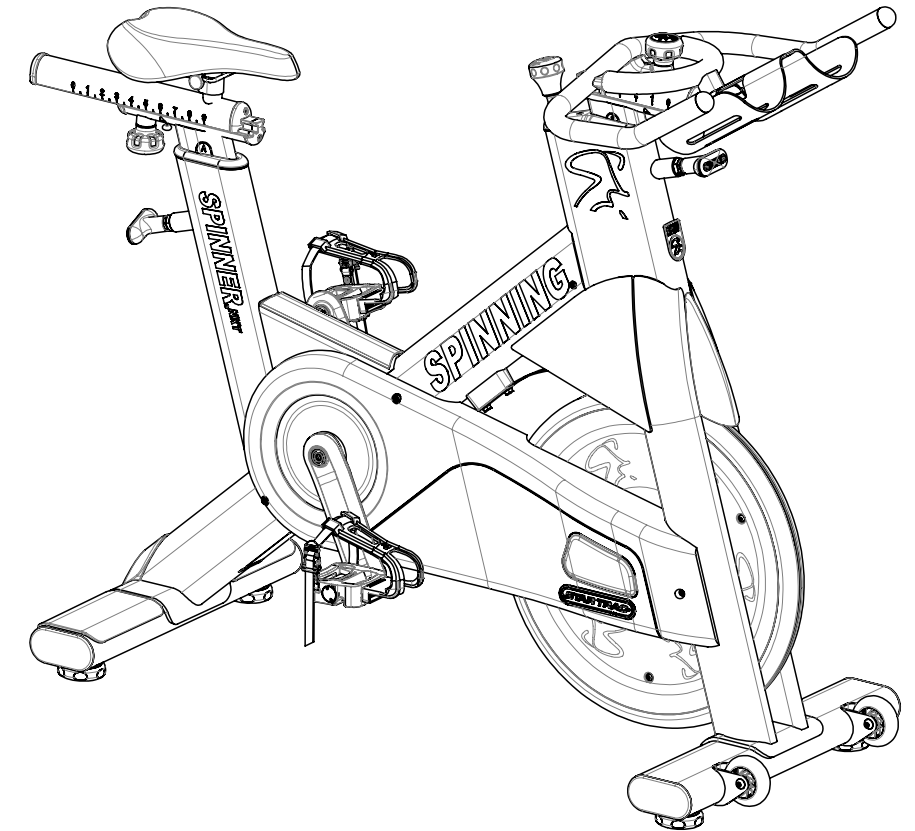
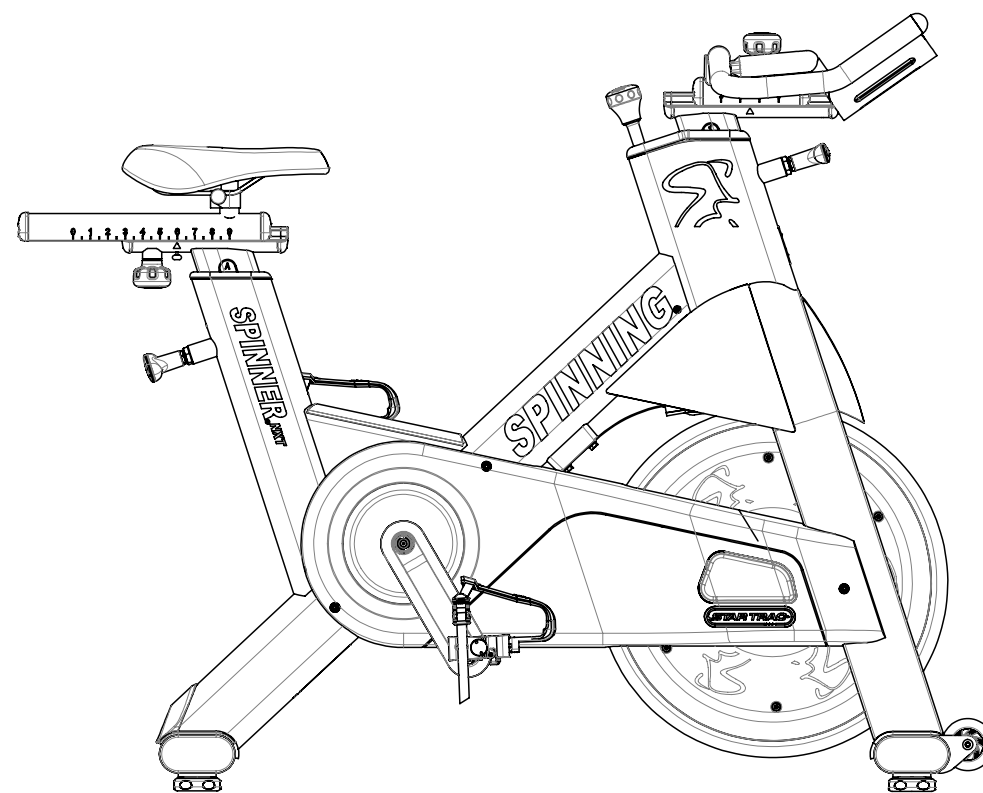
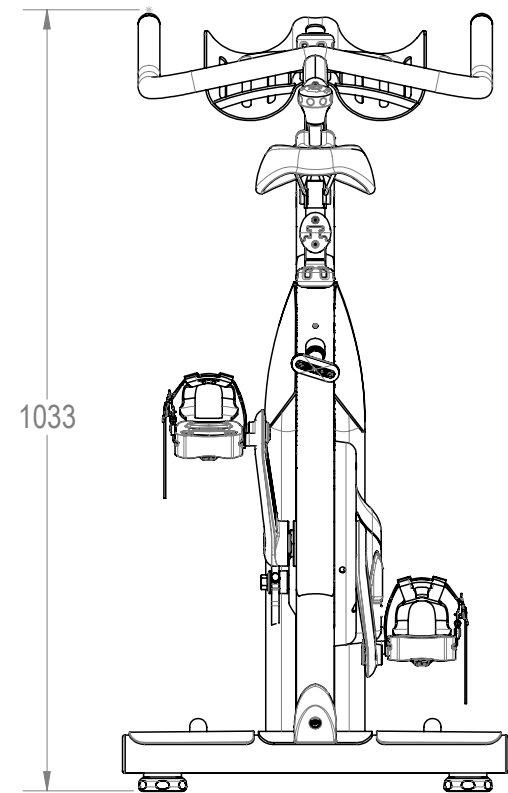
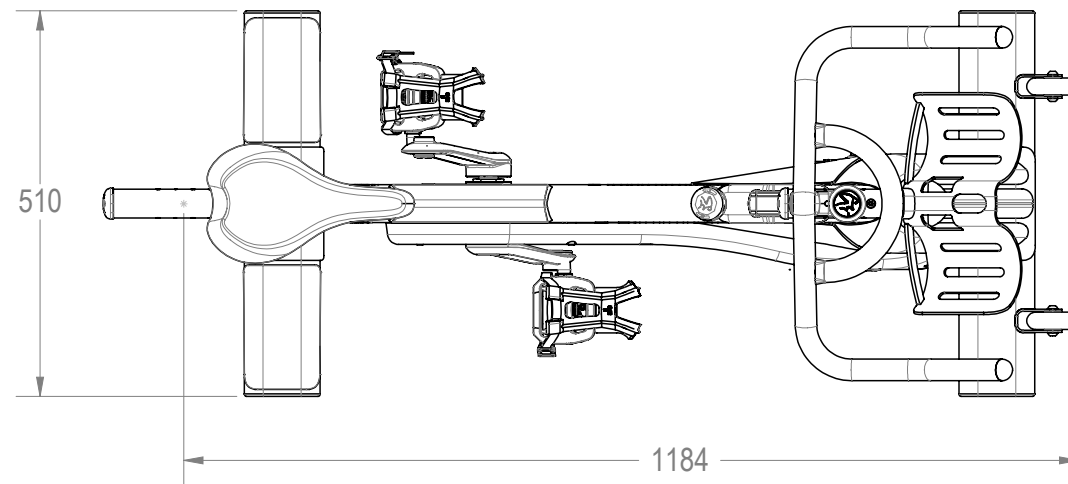
THIS DOCUMENT SHALL NOT BE REPRODUCED NOR SHALL THE INFORMATION CONTAINED HEREIN BE USED BY OR DISCLOSED TO OTHER EXCEPT AS EXPRESSLY AUTHORIZED BY UNISEN INC, D.B.A. STAR TRAC.

CLASS OF WORK	UNLESS OTHERWISE SPECIFIED DIMS ARE IN mm. TOLERANCES FOR MEASURE OF LENGTH ARE:							ANGLES = ±2°		
	0.5 to 3	> 3 to 6	> 6 to 30	> 30 to 120	> 120 to 400	> 400 to 1000	> 1000 to 2000	> 2000		
FINE	±0.05	±0.05	±0.1	±0.15	±0.2	±0.3	±0.5	----		
MEDIUM	±0.1	±0.1	±0.2	±0.3	±0.5	±0.8	±1.2	±2		
COARSE	±0.2	±0.3	±0.5	±0.8	±1.2	±2	±3	±4		
VERY COARSE	----	±0.5	±1	±1.5	±2.5	±4	±6	±8		

MATERIAL SEE BOM		THIRD ANGLE PROJECTION	
FINISH N/A		DRAWN	DATE
VENDOR: N/A		CHECKED	
P/N: N/A		APPROVED	

UNISEN, INC. DBA		14410 Myford Road Irvine CA 92606	
DRAWN: DMM		DATE: 12/10/09	
CHECKED:		TITLE: 740-7323	
APPROVED:		REV: G	
U.O.M.: MM		SCALE: 1:1.5 SHEET 1 OF 1 SHEET SIZE: B	

REVISION HISTORY				
REV	DATE	DESCRIPTION	ECO	BY
A	3/07/2010	PRODUCTION RELEASE	13486	DMM
B	11/29/2011	REPLACE P/N 740-7817 WITH 740-6899; REPLACE P/N 740-8001 & 740-7012 WITH 740-8145 AND REMOVE P/N 740-7954 & 740-8000 FROM THE ASSEMBLY	13595	SD
C	2/1/2012	UPDATED HANDLEBAR AND SEAT ASSY	13652	DMM
D	10/8/2013	REPLACE 740-8261 WITH 740-8619 TO SHARE BLADE ION PARTS. CHANGE 740-7564 TO 740-7564-XX. CHANGE 740-7601 TO 740-7601-XX. ADD 740-8269 AND 740-7304	14403	CRB



DOCUMENT STATUS:

-

NOTICE OF PROPRIETARY INFORMATION

THIS DOCUMENT SHALL NOT BE REPRODUCED NOR SHALL THE INFORMATION CONTAINED HEREIN BE USED BY OR DISCLOSED TO OTHER EXCEPT AS EXPRESSLY AUTHORIZED BY CORE HEALTH & FITNESS, LLC.

CLASS OF WORK	UNLESS OTHERWISE SPECIFIED DIMS ARE IN mm. TOLERANCES FOR MEASURE OF LENGTH ARE:							ANGLES = ±2°
	0.5 to 3	> 3 to 6	> 6 to 30	> 30 to 120	> 120 to 400	> 400 to 1000	> 1000 to 2000	
FINE	±0.05	±0.05	±0.1	±0.15	±0.2	±0.3	±0.5	----
MEDIUM X	±0.1	±0.1	±0.2	±0.3	±0.5	±0.8	±1.2	±2
COARSE	±0.2	±0.3	±0.5	±0.8	±1.2	±2	±3	±4
VERY COARSE	----	±0.5	±1	±1.5	±2.5	±4	±6	±8

MATERIAL
SEE BOM

FINISH
N/A

VENDOR: N/A

P/N: N/A

THIRD ANGLE PROJECTION



DRAWN	INITIAL DMM	DATE 07/22/2010
CHECKED		
APPROVED		

CORE HEALTH & FITNESS, LLC
4400 NE 77th Ave., Suite 300
Vancouver, WA 98662

CORE PART NO
740-7561

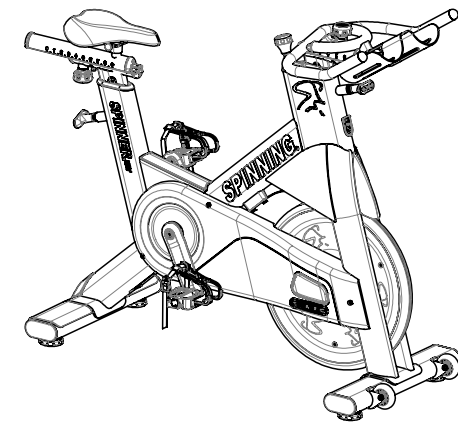
TITLE
ASSY, SPINNER, NXT

SCALE: 1:10 | SHEET 1 OF 6 | SHEET SIZE: B

REV
D

ITEM NO.	PART NUMBER	-XX	DESCRIPTION	Default/QTY.
1	050-2115		LABEL, COUNTRY OF ORIGIN	1
2	050-2125		LABEL, SERIAL NO., OEM UNIV	1
3	731-0373		WASHER,PLAIN,M6	2
4	731-0379		SCREW,M8 X1.25,20mm,SHC,HK	4
5	731-0561		WASHER,M8,1MM THK	4
6	731-0585		WASHER,M4	6
7	740-6899		CHAIN, 112 LINKS, TAYA 410H	1
8	740-7167		WASHER, LOCK, SPLIT, M6	2
9	740-7174		NUT, M6X1, HE, SS	2
10	740-7175		SCREW, M6X1.0X25, HHM, HE, SS	2
11	740-7176		SCREW, M6X1.0X50, HHM, HE, SS	1
12	740-7183		SCREW,M5X0.8X16,BHC,HE,SS	1
13	740-7193		LABEL, LOGO, STAR TRAC, SPINNER	2
14	740-7204		LOGO, SPINNING NXT, SEAT TUBE	2
15	740-7293		WASHER, ID 5.5MM, OD 13MM, SS	1
16	740-7413		LOGO, SPINNING, MAIN TUBE	2
17	740-7450		WASHER, FLAT, M5, SS	3
18	740-7548		SLEEVE, SEAT POST	1
19	740-7553		BEARING, 6005 SERIES, 25x47x12, 2RS	2
20	740-7554		B/B AXLE	1
21	740-7555		NUT, AXLE, B/B, M24x1.5	1
22	740-7558		END CAP, STABILIZER	2
23	740-7560		CRANK ARM, LEFT	1
24	740-7562		WELDMENT, FRAME, NXT	1
25	740-7564-XX	-29	WELDMENT, STABILIZER, REAR	1
26	740-7567		ASSY, STABILIZER, FRONT	1
27	740-7574		SLEEVE, SLIDER, HANDLEBAR	1
28	740-7577		ASSY, FLYWHEEL, SPINNER	1
29	740-7586		WELDMENT, CRANK ARM	1

ITEM NO.	PART NUMBER	-XX	DESCRIPTION	Default/QTY.
30	740-7588		COVER, GUSSET	1
31	740-7597		CAP, DOWNTUBE, RUBBER	1
32	740-7601-XX	-40	CHAINGUARD, MAIN	1
33	740-7602		CHAINGUARD, INSIDE	1
34	740-7603		FINGERGUARD, SPROCKET, 52T	1
35	740-7604		FINGER GUARD, 16T SPROCKET	1
36	740-7608		PLATE, MOUNT, FINGERGUARD	1
37	740-7613		ASSY, PEDAL, L	1
38	740-7614		ASSY, PEDAL, R	1
39	740-7656		FEET, LEVELING, SPINNER	2
40	740-7667		ASSY, POP PIN	1
41	740-7685		BLOCK, BRAKE MOUNT	1
42	740-7780		SCREW, M4 X 0.7, 20mm, FHM, HE, SS	1
43	740-7796		SWEATGUARD, FORK	1
44	740-7799		ASSY, BRAKE PAD	1
45	740-7812		SCREW, M4x0.7, 16mm, PHMS, PH, SS	6
46	740-7916		M5 X 16MM, DOWEL PIN	2
47	740-7989		CAP, ACCESS, FLYWHEEL ADJ	1
48	740-7995		ASSY, BRAKE, ADJUSTMENT KNOB	1
49	740-7996		SCREW, M5 X 0.8, 30mm, SHCS, SS	2
50	740-7997		SCREW, M5 x 0.8, 16mm, SHCS, SS	1
51	740-7999		SCREW, M6X1.0X50, HHM, HE, SS	1
52	740-8002		SPACER, BEARING, BB SPINNER	1
53	740-8012		BAR, FRAME STIFFENER	1
54	740-8013		DECAL, SPINMAN, NXT	1
55	740-8014		DECAL, SPINMAN, NXT	1
56	740-8037		PAD, FEET PROTECTOR	2
57	740-8079		BADGE, SPINMAN	1
58	740-8619		ASSY, H-BAR&POST, 11 ADJ, NXT	1
59	740-8270		ASSY, SEAT W/ POST, NXT	1
60	730-0908		WASHER,PLAIN,M10,SS	-
61	730-0907		WASHER,M10,SPLIT,LOCK	-
62	740-7587		SCREW, M10 X 1.5, 20mm, HHM, SS	-
63	740-8269		RIVET NUT, M5, OPEN-END	3
64	740-7304		NUT, RIVET, M6	2

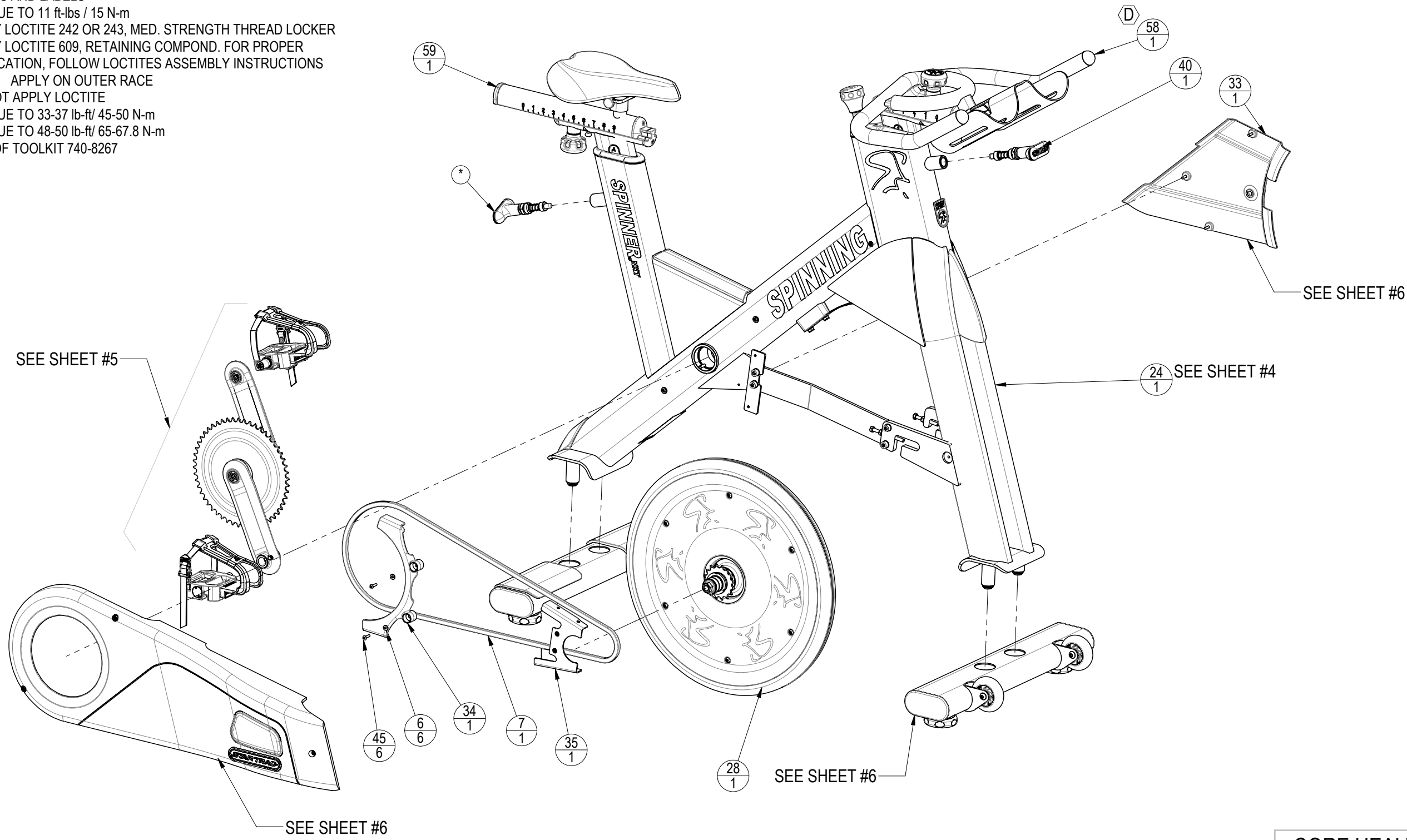


CORE HEALTH & FITNESS, LLC
 4400 NE 77th Ave., Suite 300
 Vancouver, WA 98662

CORE PART NO	740-7561	REV	D
TITLE	ASSY, SPINNER, NXT		
SCALE: 1:20	SHEET 2 OF 6	SHEET SIZE: B	

9 8 7 6 5 4 3 2 1

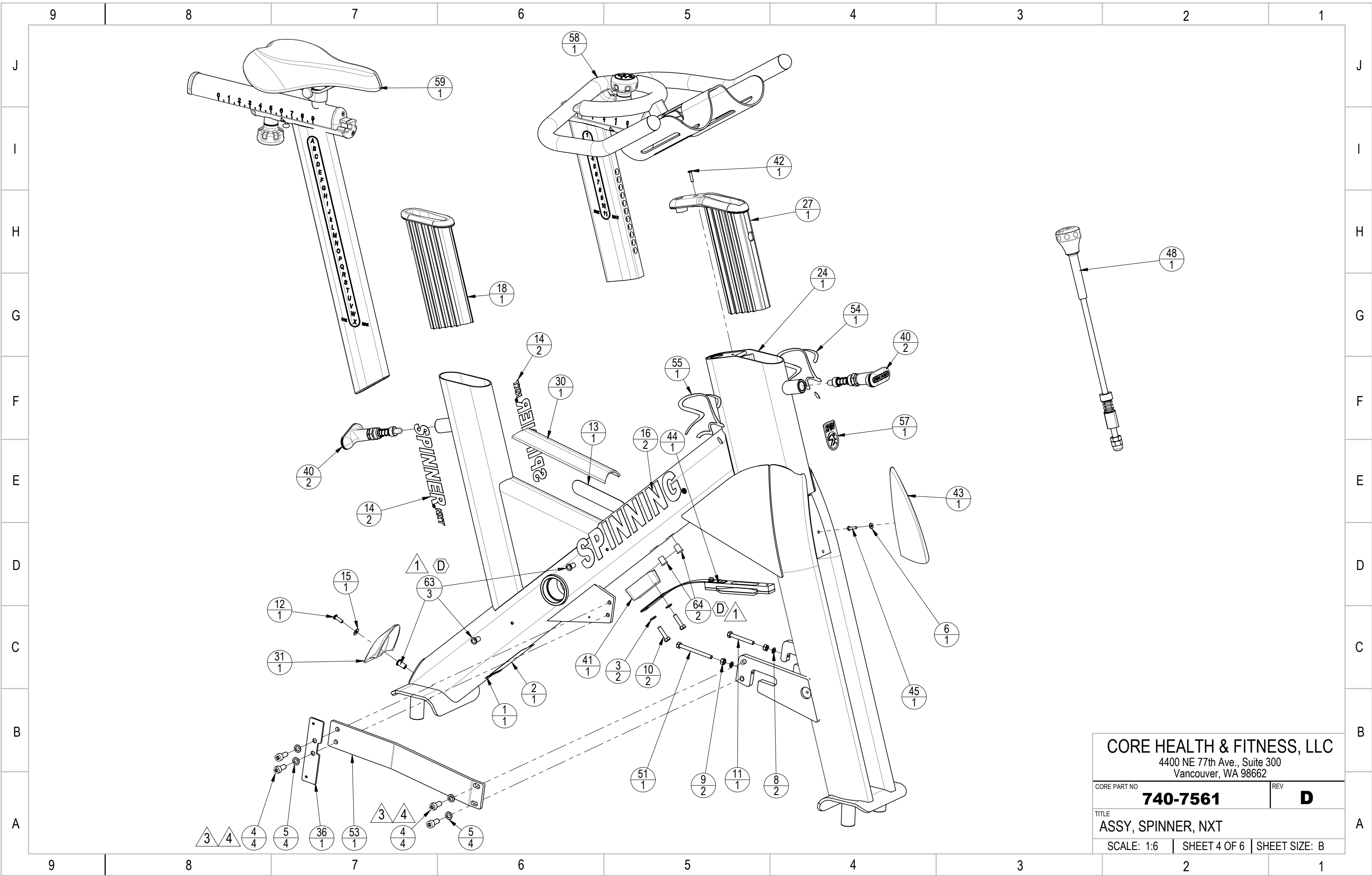
- NOTES:
1. FOLLOW MFG SPEC ON PROPER INSTALLATION OF RIVET FASTENER
 2. CLEAN AREAS WITH DENATURED ALCOHOL PRIOR TO ADHERING LOGO'S AND LABELS
 3. TORQUE TO 11 ft-lbs / 15 N-m
 4. APPLY LOCTITE 242 OR 243, MED. STRENGTH THREAD LOCKER
 5. APPLY LOCTITE 609, RETAINING COMPOUND. FOR PROPER APPLICATION, FOLLOW LOCTITES ASSEMBLY INSTRUCTIONS
 - A. APPLY ON OUTER RACE
 6. DO NOT APPLY LOCTITE
 7. TORQUE TO 33-37 lb-ft/ 45-50 N-m
 8. TORQUE TO 48-50 lb-ft/ 65-67.8 N-m
- * - PART OF TOOLKIT 740-8267



CORE HEALTH & FITNESS, LLC
 4400 NE 77th Ave., Suite 300
 Vancouver, WA 98662

CORE PART NO	740-7561	REV	D
TITLE ASSY, SPINNER, NXT			
SCALE: 1:8	SHEET 3 OF 6	SHEET SIZE: B	

9 8 7 6 5 4 3 2 1

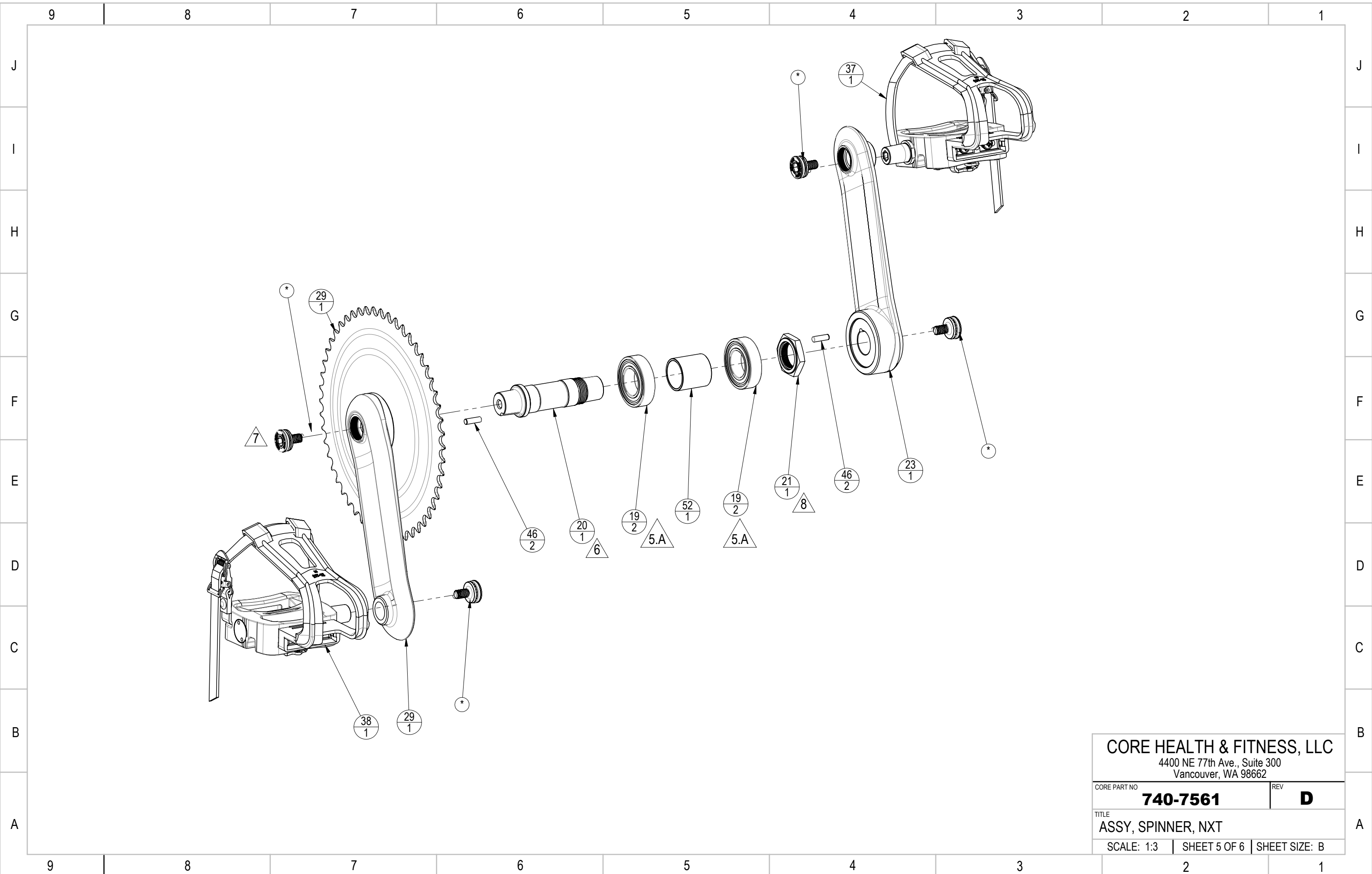


CORE HEALTH & FITNESS, LLC
 4400 NE 77th Ave., Suite 300
 Vancouver, WA 98662

CORE PART NO **740-7561** REV **D**

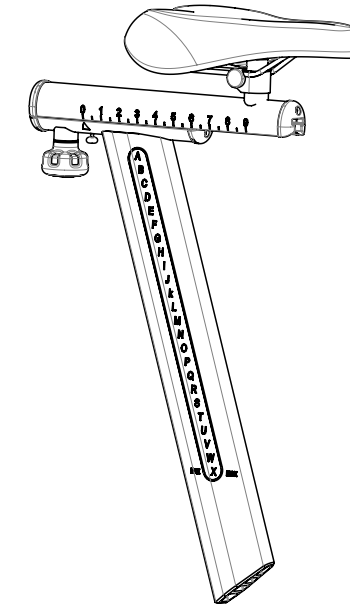
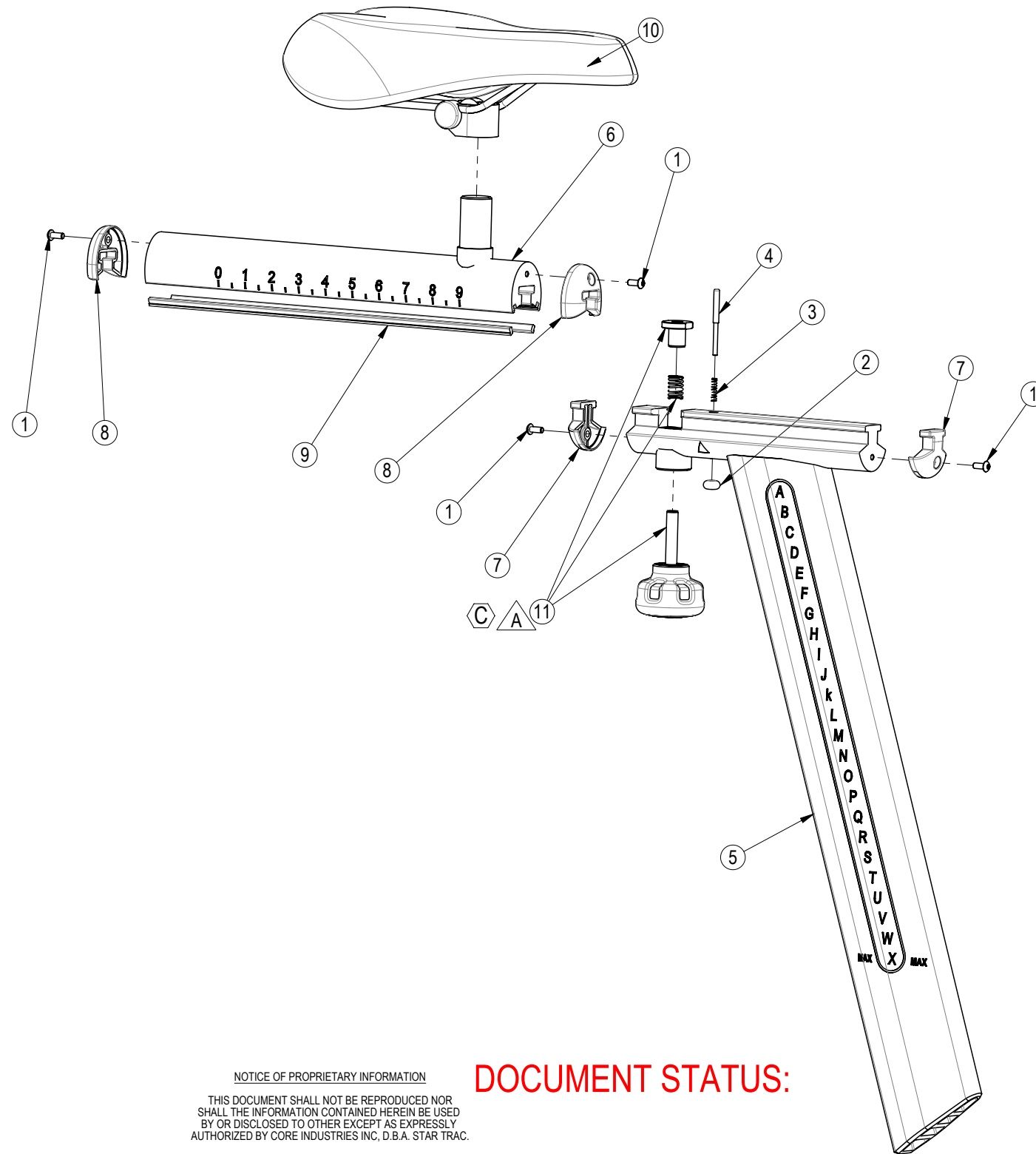
TITLE **ASSY, SPINNER, NXT**

SCALE: 1:6 | SHEET 4 OF 6 | SHEET SIZE: B



CORE HEALTH & FITNESS, LLC 4400 NE 77th Ave., Suite 300 Vancouver, WA 98662		
CORE PART NO	740-7561	REV D
TITLE ASSY, SPINNER, NXT		
SCALE: 1:3	SHEET 5 OF 6	SHEET SIZE: B

REVISION HISTORY				
REV	DATE	DESCRIPTION	ECO	BY
A	3/7/2011	PRODUCTION RELEASE	13486	DMM
B	7/28/2011	REMOVED 740-8003 AND 740-8004, REPLACED WITH 740-7651 AND 740-7652; ADDED 740-8076; 740-7649 NOW HAS 9 PT ADJUSTMENT	13555	DMM
C	3/23/2012	ADDED KIT 740-8263-KT	13720	DMM



ITEM NO.	PART NUMBER	DESCRIPTION	QTY
1	740-7181	SCREW, M4X0.7X10, BHC, HE, SS	4
2	740-7270	KNOB, SEAT SLIDER, STOPPER	1
3	740-7271	SPRING, SEAT SLIDER, NXT	1
4	740-7526	PIN, STOP, SEAT SLIDER	1
5	740-7565	WELDMENT, SEAT POST	1
6	740-7649	WELDMENT, SEAT SLIDER, SPINNER	1
7	740-7651	END CAP, SLIDER, MALE	2
8	740-7652	END CAP, SLIDER, FEMALE	2
9	740-8076	INSERT, SLIDER, HBAR AND SEAT	2
10	740-8077	SADDLE, SILVER, NXT	1
11	740-8263-KT	KIT, SEAT KNOB, F/A ADJUST, SPINNER	1

NOTICE OF PROPRIETARY INFORMATION
 THIS DOCUMENT SHALL NOT BE REPRODUCED NOR
 SHALL THE INFORMATION CONTAINED HEREIN BE USED
 BY OR DISCLOSED TO OTHER EXCEPT AS EXPRESSLY
 AUTHORIZED BY CORE INDUSTRIES INC, D.B.A. STAR TRAC.

DOCUMENT STATUS:

NOTES:

PART OF KIT 740-8263-KT.

CLASS OF WORK	UNLESS OTHERWISE SPECIFIED DIMS ARE IN mm. TOLERANCES FOR MEASURE OF LENGTH ARE:							ANGLES = ±2°
	0.5 to 3	>3 to 6	>6 to 30	>30 to 120	>120 to 400	>400 to 1000	>1000 to 2000	
FINE	±0.05	±0.05	±0.1	±0.15	±0.2	±0.3	±0.5	----
MEDIUM	±0.1	±0.1	±0.2	±0.3	±0.5	±0.8	±1.2	±2
COARSE	X ±0.2	±0.3	±0.5	±0.8	±1.2	±2	±3	±4
VERY COARSE	----	±0.5	±1	±1.5	±2.5	±4	±6	±8

MATERIAL
SEE BOM

FINISH
N/A

VENDOR:

P/N:

THIRD ANGLE PROJECTION



DRAWN: INITIAL DMM, DATE 03/07/2011
 CHECKED: _____
 APPROVED: _____

CORE IND INC., DBA 14410 Myford Road
Irvine CA 92606

STAR TRAC PART NO. **740-7566** REV **C**

TITLE **ASSY, SEAT POST**

U.O.M. MM SCALE: 1:10 | SHEET 1 OF 1 | SHEET SIZE: B

10 9 8 7 6 5 4 3 2 1

H NOTES:

REVISION HISTORY

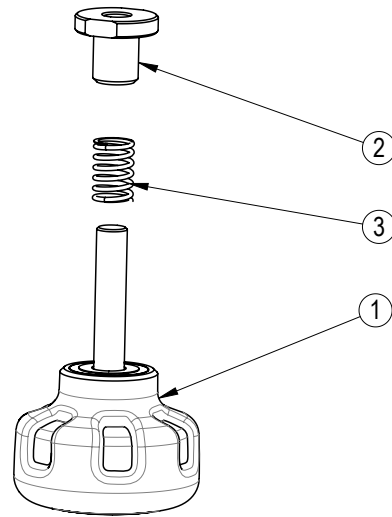
REV	DATE	DESCRIPTION	ECO	BY
A	3/23/2012	PRODUCTION RELEASE	13720	DMM

G

F

E

D



C

B

A

CLASS OF WORK	FINE	MEDIUM	COARSE	VERY COARSE
			X	

UNLESS OTHERWISE SPECIFIED DIMS ARE IN mm. TOLERANCES FOR MEASURE OF LENGTH ARE: ANGLES ±2°	0.5 to 3	±0.05	±0.1	±0.2	----
	> 3 to 6	±0.05	±0.1	±0.3	±0.5
	> 6 to 30	±0.1	±0.2	±0.5	±1
	> 30 to 120	±0.15	±0.3	±0.8	±1.5
	> 120 to 400	±0.2	±0.5	±1.2	±2.5
	> 400 to 1000	±0.3	±0.8	±2	±4
	> 1000 to 2000	±0.5	±1.2	±3	±6
	> 2000	----	±2	±4	±8

DOCUMENT STATUS:

NOTICE OF PROPRIETARY INFORMATION
 THIS DOCUMENT SHALL NOT BE REPRODUCED NOR SHALL THE INFORMATION CONTAINED HEREIN BE USED BY OR DISCLOSED TO OTHER EXCEPT AS EXPRESSLY AUTHORIZED BY CORE INDUSTRIES INC, D.B.A. STAR TRAC.

MATERIAL
SEE BOM

FINISH
N/A


VENDOR: N/A

P/N: N/A

ITEM NO.	PART NUMBER	DESCRIPTION	QTY.
1	740-8263	KNOB, ADJUST, W/ BRASS INSERT	1
2	740-8329	HOLDING NUT, SEAT SLIDER, SPINNER	1
3	740-8330	SPRING, FORE/AFT ADJUST, SPINNER	1

THIRD ANGLE PROJECTION

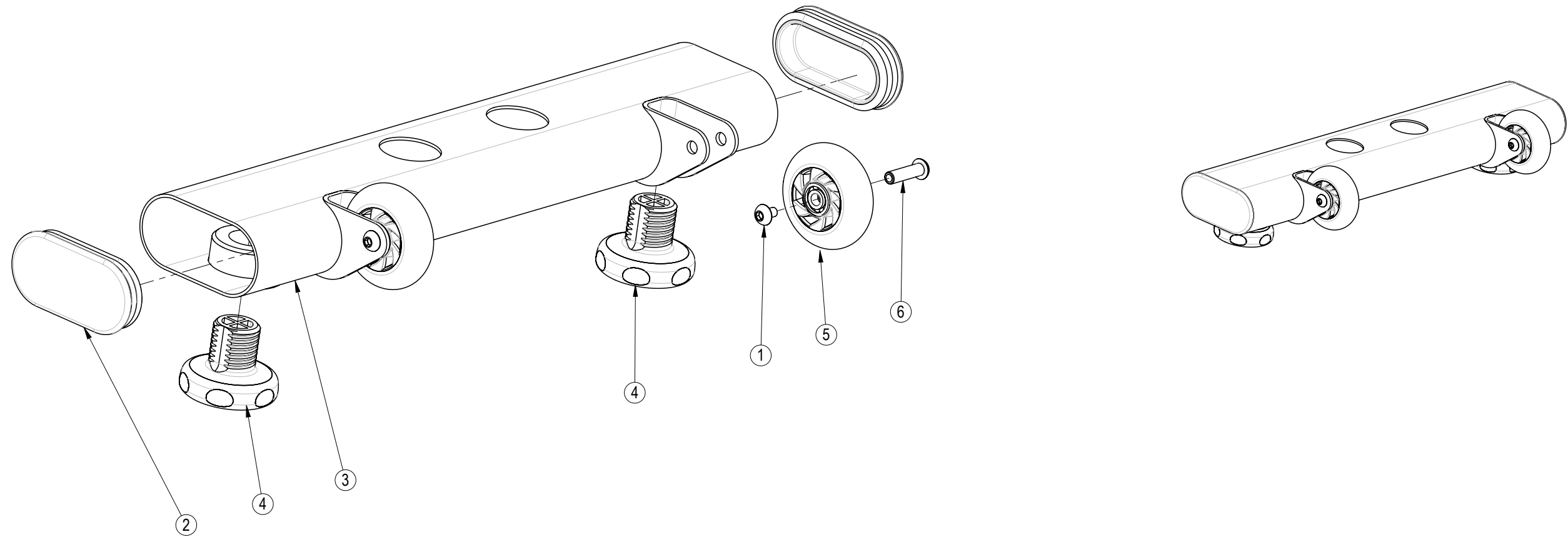


CORE INDUSTRIES INC., DBA

 14410 Myford Road
 Irvine CA 92606

DRAWN	INITIAL DMM	DATE 03/22/12	STAR TRAC PART NO 740-8263-KT	REV A
CHECKED			TITLE KIT, SEAT KNOB, F/A ADJUST, SPINNER	
APPROVED			SCALE: 1:2	SHEET 1 OF 1 SHEET SIZE: A

10 9 8 7 6 5 4 3 2 1

REVISION HISTORY				
REV	DATE	DESCRIPTION	ECO	BY
A	3/7/2011	PRODUCTION RELEASE	13486	DMM



ITEM NO.	PART NUMBER	DESCRIPTION	QTY
1	740-7187	SCREW, M6X1.25X10, BHC, HE, SS	2
2	740-7558	END CAP, STABILIZER	2
3	740-7568	WELD, FRONT STABILIZER	1
4	740-7656	FEET, LEVELING, SPINNER	2
5	740-8006	WHEEL, FRONT FOOT, SPINNER	2
6	740-8007	BOLT, WHEEL, NXT	2

NOTICE OF PROPRIETARY INFORMATION
 THIS DOCUMENT SHALL NOT BE REPRODUCED NOR
 SHALL THE INFORMATION CONTAINED HEREIN BE USED
 BY OR DISCLOSED TO OTHER EXCEPT AS EXPRESSLY
 AUTHORIZED BY CORE INDUSTRIES INC, D.B.A. STAR TRAC.

DOCUMENT STATUS:

NOTES:

CLASS OF WORK	UNLESS OTHERWISE SPECIFIED DIMS ARE IN mm. TOLERANCES FOR MEASURE OF LENGTH ARE:								ANGLES = ±2°
	0.5 to 3	> 3 to 6	> 6 to 30	> 30 to 120	> 120 to 400	> 400 to 1000	> 1000 to 2000	> 2000	
FINE	±0.05	±0.05	±0.1	±0.15	±0.2	±0.3	±0.5	----	
MEDIUM	±0.1	±0.1	±0.2	±0.3	±0.5	±0.8	±1.2	±2	
COARSE	X ±0.2	±0.3	±0.5	±0.8	±1.2	±2	±3	±4	
VERY COARSE	----	±0.5	±1	±1.5	±2.5	±4	±6	±8	

MATERIAL SEE BOM

FINISH N/A

VENDOR: N/A P/N: N/A

THIRD ANGLE PROJECTION

DRAWN	INITIAL	DATE
CHECKED	DMM	03/07/2011
APPROVED		

CORE IND INC., DBA 14410 Myford Road Irvine CA 92606

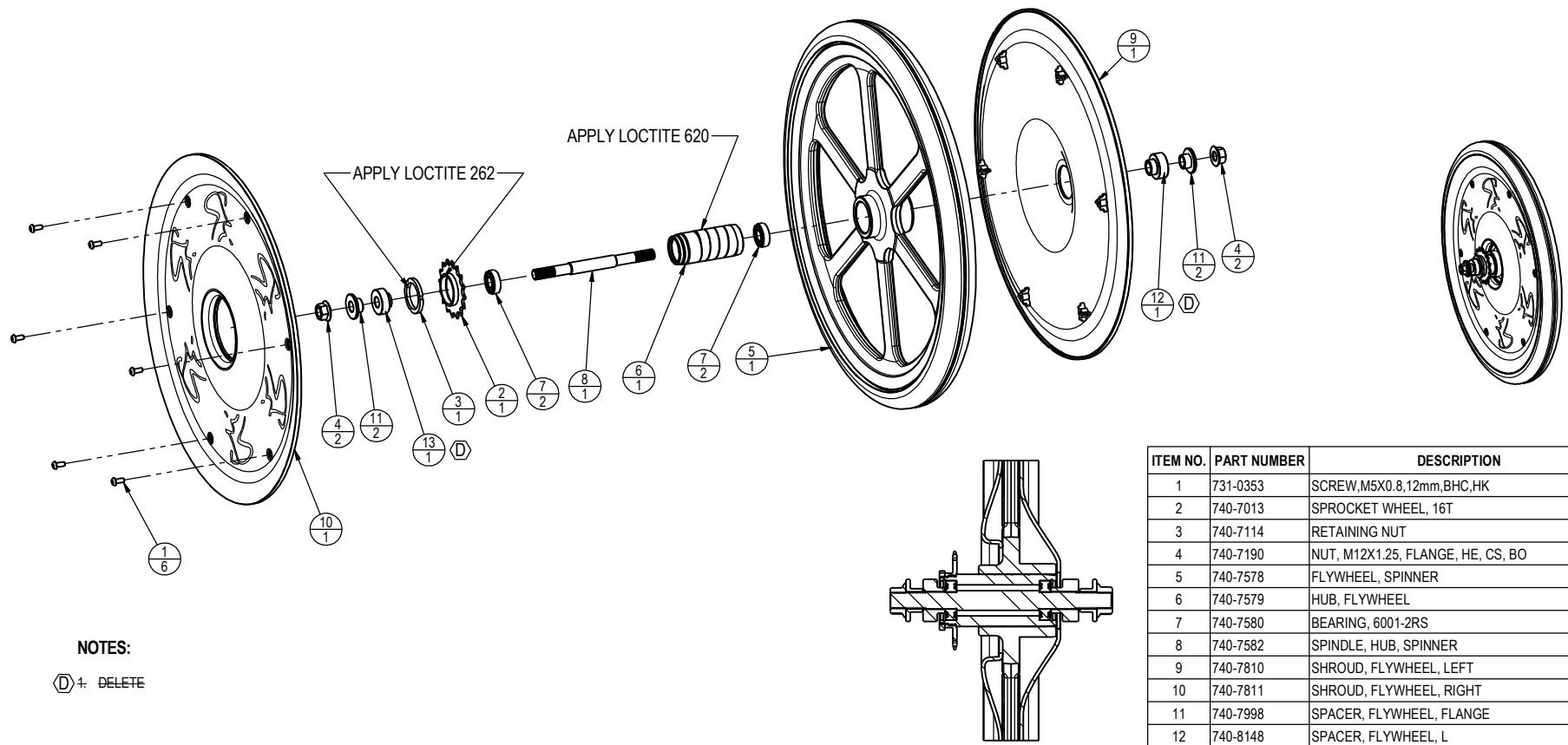
STAR TRAC

STAR TRAC PART NO. **740-7567** REV **A**

TITLE **ASSY, STABILIZER, FRONT**

U.O.M. MM SCALE: 1:3 | SHEET 1 OF 1 | SHEET SIZE: B

REVISION HISTORY				
REV	DATE	DESCRIPTION	ECO	BY
A	3/7/2011	PRODUCTION RELEASE	13486	DMM
B	6/28/2011	REMOVED (2X) 740-7585 AND (2X) 740-7581; ADDED 740-8148 AND 740-8149	13192	DMM
C	7/27/2011	ITEM 740-7190 WAS 740-7584	13555	DMM
D	6/20/2012	UPDATE ASSY TO SHOW UPDATED P/N 740-8148 AND 740-7149; REMOVE NOTE 1	13783	SV



ITEM NO.	PART NUMBER	DESCRIPTION	QTY
1	731-0353	SCREW,M5X0.8,12mm,BHC,HK	6
2	740-7013	SPROCKET WHEEL, 16T	1
3	740-7114	RETAINING NUT	1
4	740-7190	NUT, M12X1.25, FLANGE, HE, CS, BO	2
5	740-7578	FLYWHEEL, SPINNER	1
6	740-7579	HUB, FLYWHEEL	1
7	740-7580	BEARING, 6001-2RS	2
8	740-7582	SPINDLE, HUB, SPINNER	1
9	740-7810	SHROUD, FLYWHEEL, LEFT	1
10	740-7811	SHROUD, FLYWHEEL, RIGHT	1
11	740-7998	SPACER, FLYWHEEL, FLANGE	2
12	740-8148	SPACER, FLYWHEEL, L	1
13	740-8149	SPACER, FLYWHEEL, R	1

NOTES:

ⓓ+ DELETE

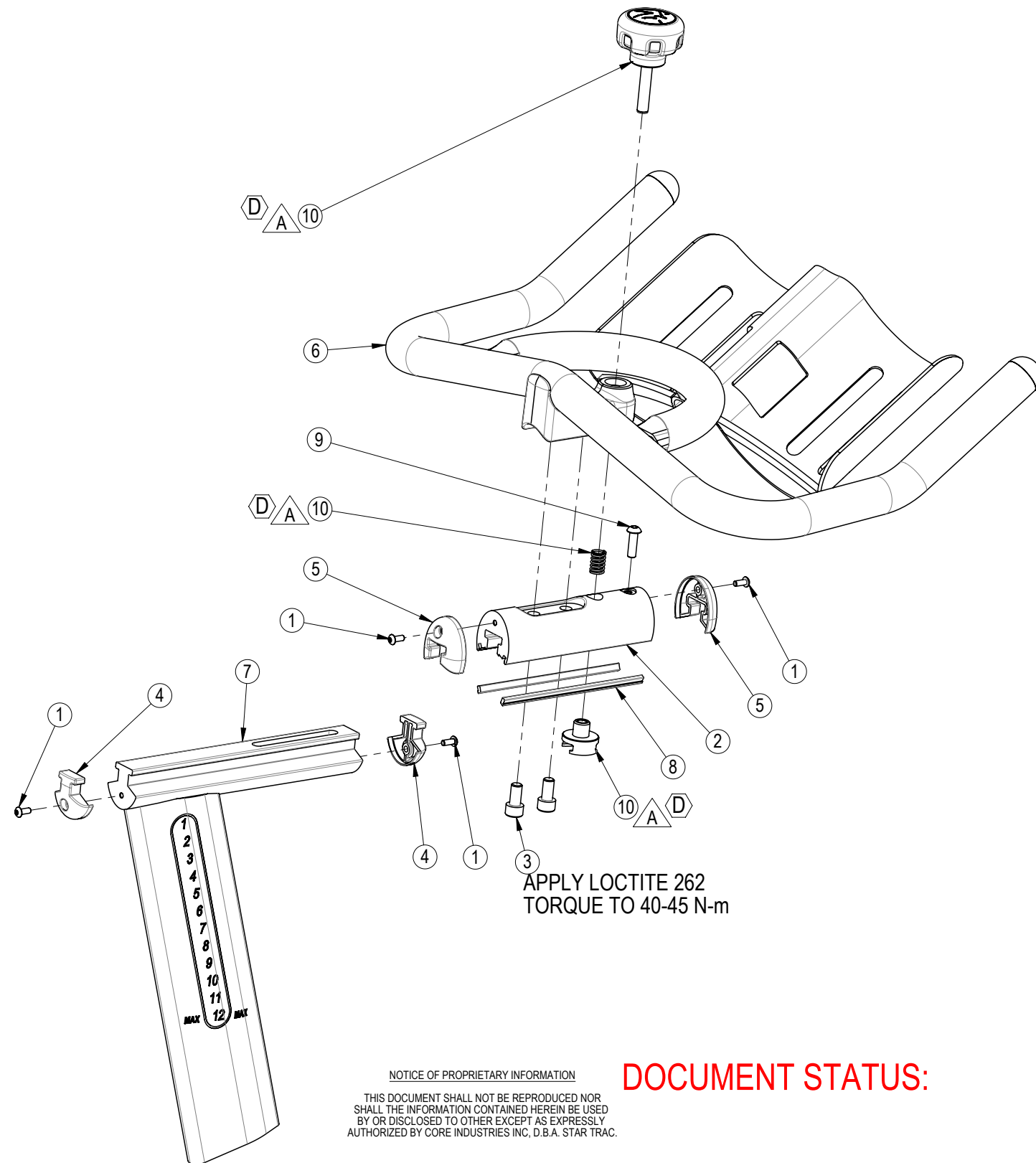
DOCUMENT STATUS:

NOTICE OF PROPRIETARY INFORMATION
THIS DOCUMENT SHALL NOT BE REPRODUCED NOR SHALL THE INFORMATION CONTAINED HEREIN BE USED BY OR DISCLOSED TO OTHER EXCEPT AS EXPRESSLY AUTHORIZED BY CORE INDUSTRIES, INC., D.B.A. STAR TRAC.

CLASS OF WORK	UNLESS OTHERWISE SPECIFIED DIMS ARE IN mm. TOLERANCES FOR MEASURE OF LENGTH ARE:							ANGLES = ±2°		
	0.5 to 3	>3 to 6	>6 to 30	>30 to 120	>120 to 400	>400 to 1000	>1000 to 2000	>2000		
FINE	±0.05	±0.05	±0.1	±0.15	±0.2	±0.3	±0.5	----		
MEDIUM	±0.1	±0.1	±0.2	±0.3	±0.5	±0.8	±1.2	±2		
COARSE	±0.2	±0.3	±0.5	±0.8	±1.2	±2	±3	±4		
VERY COARSE	----	±0.5	±1	±1.5	±2.5	±4	±6	±8		

MATERIAL SEE BOM	FINISH N/A	VENDOR: N/A	P/N: N/A
----------------------------	----------------------	--------------------	-----------------

THIRD ANGLE PROJECTION		CORE INDUSTRIES, INC. DBA STAR TRAC 14410 Myford Road Irvine CA 92606	
DRAWN	INITIAL	DATE	STARTRAC PART NO 740-7577
CHECKED			REV D
APPROVED			TITLE ASSY, FLYWHEEL, SPINNER
U.O.M.	MM	SCALE: 1:5	SHEET 1 OF 1
			SHEET SIZE: B



APPLY LOCTITE 262
TORQUE TO 40-45 N-m

NOTICE OF PROPRIETARY INFORMATION
THIS DOCUMENT SHALL NOT BE REPRODUCED NOR SHALL THE INFORMATION CONTAINED HEREIN BE USED BY OR DISCLOSED TO OTHER EXCEPT AS EXPRESSLY AUTHORIZED BY CORE INDUSTRIES INC, D.B.A. STAR TRAC.

DOCUMENT STATUS:

NOTES:
D A PART OF KIT 740-7626-KT.

CLASS OF WORK	UNLESS OTHERWISE SPECIFIED DIMS ARE IN mm. TOLERANCES FOR MEASURE OF LENGTH ARE:							ANGLES = ±2°
	0.5 to 3	> 3 to 6	> 6 to 30	> 30 to 120	> 120 to 400	> 400 to 1000	> 1000 to 2000	
FINE	±0.05	±0.05	±0.1	±0.15	±0.2	±0.3	±0.5	----
MEDIUM	±0.1	±0.1	±0.2	±0.3	±0.5	±0.8	±1.2	±2
COARSE	X ±0.2	±0.3	±0.5	±0.8	±1.2	±2	±3	±4
VERY COARSE	----	±0.5	±1	±1.5	±2.5	±4	±6	±8

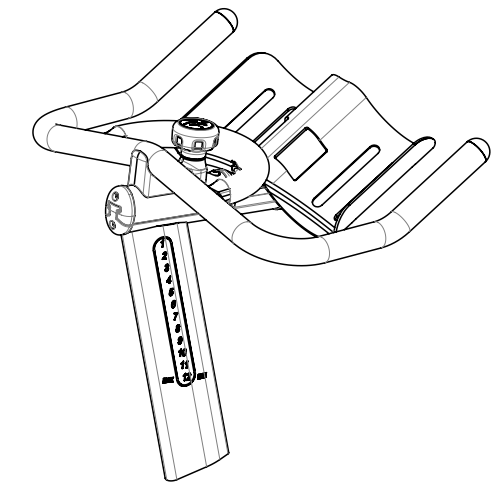
MATERIAL
SEE BOM

FINISH
N/A

VENDOR: N/A

P/N: N/A

REVISION HISTORY				
REV	DATE	DESCRIPTION	ECO	BY
A	3/7/2011	PRODUCTION RELEASE	13486	DMM
B	7/28/2011	REMOVED 740-8003 AND 740-8004, REPLACED WITH 740-7651 AND 740-7652; 740-8177 WAS 740-8005; 740-7591 MODIFIED FOR LARGER SCREW; ADDED 740-8076	13555	DMM
C	11/7/2011	CHANGE FROM "SCREW, M8 X 20mm, BHS, HE, SS" TO "SCREW, M6 X1x20L, BH, HE, AS, BO"	13608	SD
D	3/23/2012	ADDED KIT 740-7626-KT	13720	DMM



ITEM NO.	PART NUMBER	DESCRIPTION	QTY
1	740-7181	SCREW, M4X0.7X10, BHC, HE, SS	4
2	740-7591	SLIDER, HANDLEBAR, TOP	1
3	740-7620	SCREW, M8X1.25, 20mm, SHCS	2
4	740-7651	END CAP, SLIDER, MALE	2
5	740-7652	END CAP, SLIDER, FEMALE	2
6	740-7673	WELDMENT, HANDLEBAR, PVC DIPPED	1
7	740-7678	WELDMENT, HBAR POST	1
8	740-8076	INSERT, SLIDER, HBAR AND SEAT	2
9	740-8177	SCREW, M6X1x20L, BH, HE, AS,BO	1
10	740-7626-KT	KIT, HBAR KNOB, F/A ADJUST, SPINNER	1

THIRD ANGLE PROJECTION



CORE IND INC., DBA 14410 Myford Road
Irvine CA 92606
STAR TRAC

DRAWN	INITIAL DMM	DATE 03/07/2011
CHECKED		
APPROVED		

STAR TRAC PART NO 740-7589	REV D
TITLE ASSY, HANDLEBAR, W/ FORE-AFT	
U.O.M. MM	SCALE: 1:10 SHEET 1 OF 1 SHEET SIZE: B

10 9 8 7 6 5 4 3 2 1

H NOTES:

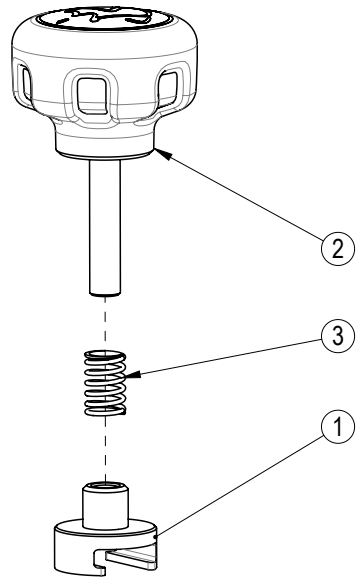
REVISION HISTORY				
REV	DATE	DESCRIPTION	ECO	BY
A	3/23/2012	PRODUCTION RELEASE	13270	DMM

G

F

E

D



C

B

A

CLASS OF WORK	FINE	MEDIUM	COARSE	VERY COARSE
		X		

UNLESS OTHERWISE SPECIFIED DIMS ARE IN mm. TOLERANCES FOR MEASURE OF LENGTH ARE: ANGLES ±2°	0.5 to 3	±0.05	±0.1	±0.2	----
	> 3 to 6	±0.05	±0.1	±0.3	±0.5
	> 6 to 30	±0.1	±0.2	±0.5	±1
	> 30 to 120	±0.15	±0.3	±0.8	±1.5
	> 120 to 400	±0.2	±0.5	±1.2	±2.5
	> 400 to 1000	±0.3	±0.8	±2	±4
	> 1000 to 2000	±0.5	±1.2	±3	±6
	> 2000	----	±2	±4	±8

DOCUMENT STATUS:

NOTICE OF PROPRIETARY INFORMATION
 THIS DOCUMENT SHALL NOT BE REPRODUCED NOR SHALL THE INFORMATION CONTAINED HEREIN BE USED BY OR DISCLOSED TO OTHER EXCEPT AS EXPRESSLY AUTHORIZED BY CORE INDUSTRIES INC, D.B.A. STAR TRAC.

MATERIAL
SEE BOM

FINISH
N/A

VENDOR: N/A P/N: N/A

ITEM NO.	PART NUMBER	DESCRIPTION	QTY.
1	740-7626	HOLDING NUT, SEAT SLIDER, NXT/E-SPINNER	1
2	740-8263	KNOB, ADJUST, W/ BRASS INSERT	1
3	740-8330	SPRING, FORE/AFT ADJUST, SPINNER	1

THIRD ANGLE PROJECTION

DRAWN	INITIAL DMM	DATE 03/22/12
CHECKED		
APPROVED		
	U.O.M.	MM

CORE INDUSTRIES INC., DBA
 14410 Myford Road
 Irvine CA 92606

STAR TRAC PART NO
740-7626-KT

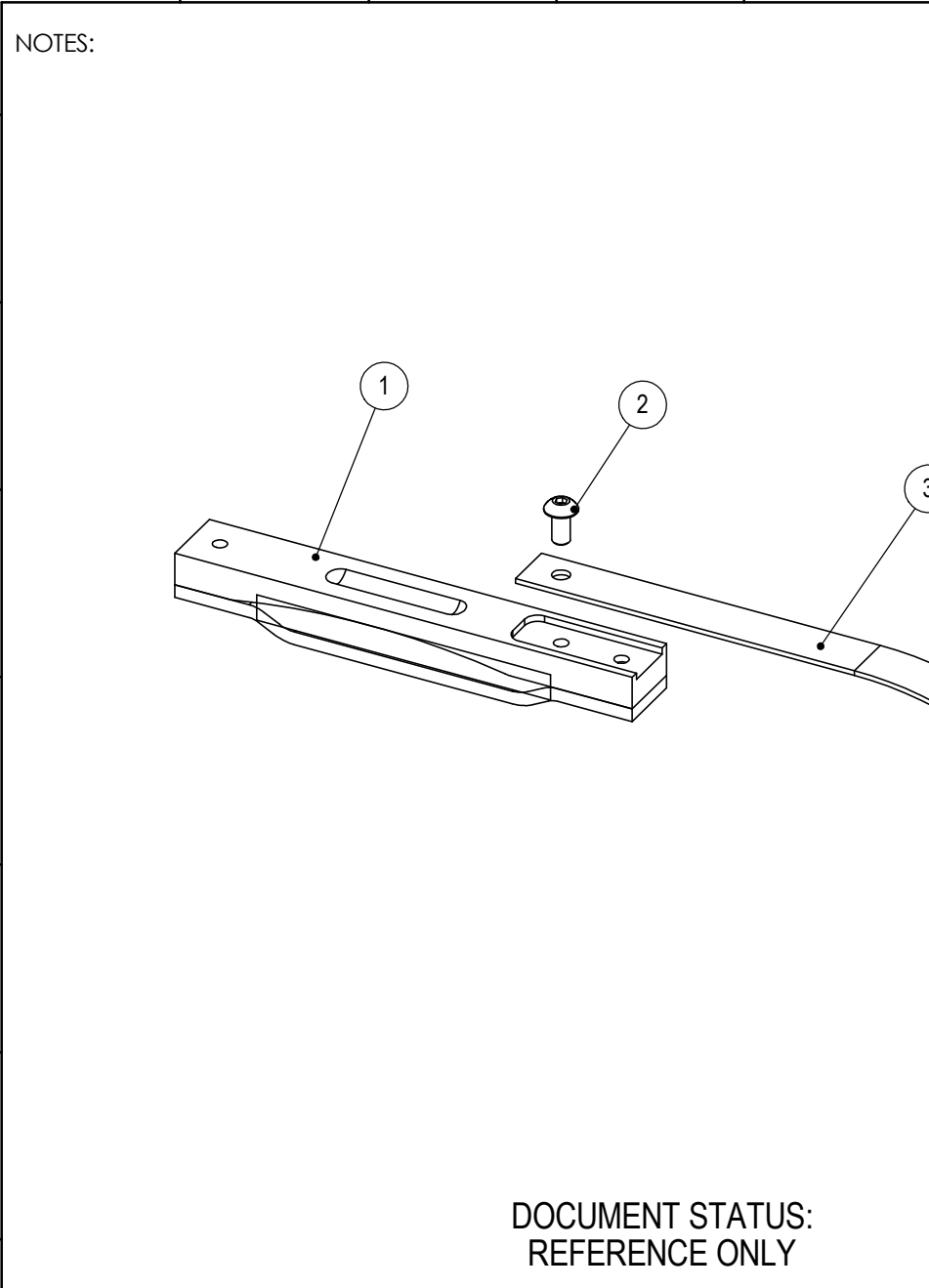
TITLE
KIT, HBAR KNOB, F/A ADJUST, SPINNER

SCALE: 1:2 | SHEET 1 OF 1 | SHEET SIZE: A

10 9 8 7 6 5 4 3 2 1

10 9 8 7 6 5 4 3 2 1

H
G
F
E
D
C
B
A



REVISION HISTORY				
REV	DATE	DESCRIPTION	ECO	BY
CS001	10/14/11	CUSTOMER SUPPORT REFERENCE RELEASE	N/A	JEB

ITEM NO.	PART NUMBER	DESCRIPTION	QTY.
1	740-6872	KIT, ASSY, PAD, BRAKE, SPINNER, 7090/80/70/60	1
2	740-7182	SCREW, M5X0.8X10, BHC, HE, SS	1
3	740-7798	PLATE, STRIP, BRAKE PAD	1

DOCUMENT STATUS:
REFERENCE ONLY

THIRD ANGLE PROJECTION		
DRAWN	INITIAL JEB	DATE 10/14/11
CHECKED		
APPROVED		
	U.O.M.	INCH

CORE INDUSTRIES, INC. DBA
 14410 Myford Road
Irvine CA 92606

STARTRAC PART NO **740-7799** REV **003**

TITLE
ASSY, BRAKE PAD

SCALE: 1:2 SHEET 1 OF 1 SHEET SIZE: A

NOTICE OF PROPRIETARY INFORMATION
 THIS DOCUMENT SHALL NOT BE REPRODUCED NOR SHALL THE INFORMATION CONTAINED HEREIN BE USED BY OR DISCLOSED TO OTHER EXCEPT AS EXPRESSLY AUTHORIZED BY CORE INDUSTRIES, INC., D.B.A. STAR TRAC.

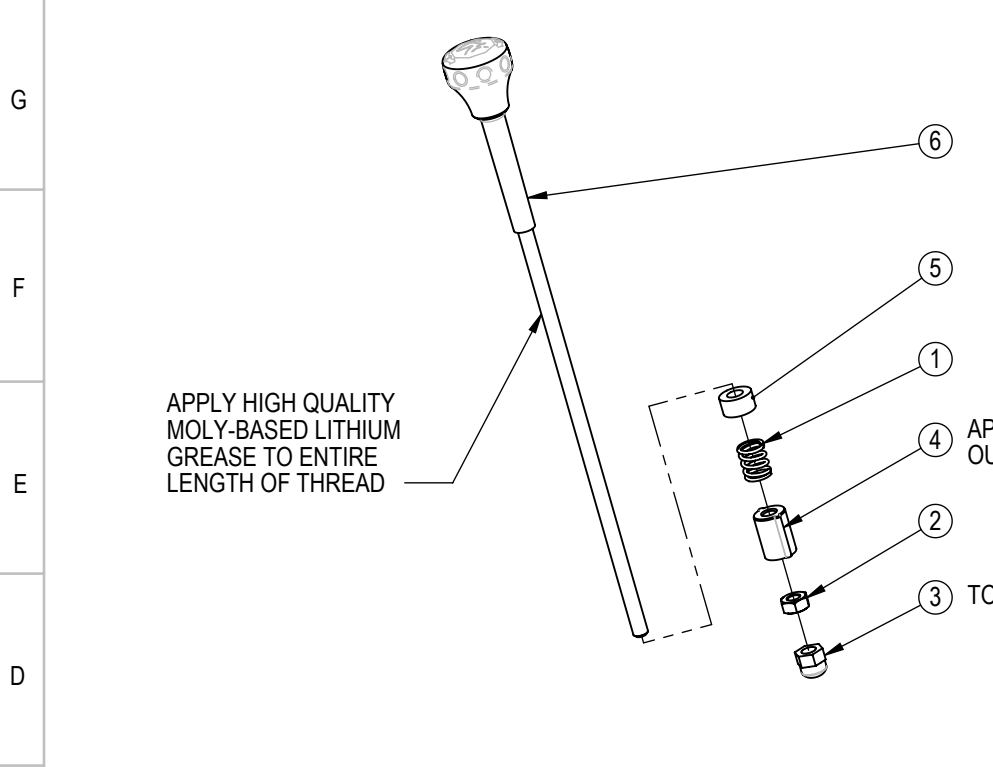
NOTICE OF REFERENCE ONLY
 THIS DOCUMENT IS FOR REFERENCE ONLY. ANY AND ALL DIMENSIONS LISTED ON THIS DRAWING ARE FOR REFERENCE ONLY AND DO NOT DEFINE ANY MANUFACTURING SPECIFICATIONS OR DESIGN PARAMETERS FOR ANY COMPONENTS DISPLAYED IN THIS DRAWING. THIS DOCUMENT DOES NOT AUTHORIZE ANY ENGINEERING CHANGE ORDER, CHANGE REQUEST, AND/OR CHANGE NOTICE.

10 9 8 7 6 5 4 3 2 1

H
G
F
E
D
C
B
A

H NOTES:

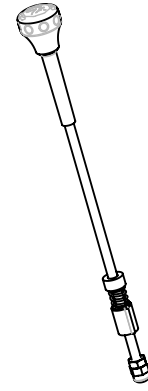
REVISION HISTORY				
REV	DATE	DESCRIPTION	ECO	BY
A	3/7/2011	PRODUCTION RELEASE	13486	DMM



APPLY HIGH QUALITY MOLY-BASED LITHIUM GREASE TO ENTIRE LENGTH OF THREAD

APPLY GREASE TO INSIDE AND OUTSIDE OF ITEM 740-7573

TORQUE TO 80-85 N-m



CLASS OF WORK	FINE	MEDIUM	COARSE	VERY COARSE
			X	

UNLESS OTHERWISE SPECIFIED DIMS ARE IN mm. TOLERANCES FOR MEASURE OF LENGTH ARE: ANGLES ±2°	0.5 to 3	±0.05	±0.1	±0.2	----
	> 3 to 6	±0.05	±0.1	±0.3	±0.5
	> 6 to 30	±0.1	±0.2	±0.5	±1
	> 30 to 120	±0.15	±0.3	±0.8	±1.5
	> 120 to 400	±0.2	±0.5	±1.2	±2.5
	> 400 to 1000	±0.3	±0.8	±2	±4
	> 1000 to 2000	±0.5	±1.2	±3	±6
	> 2000	----	±2	±4	±8

DOCUMENT STATUS:

NOTICE OF PROPRIETARY INFORMATION
 THIS DOCUMENT SHALL NOT BE REPRODUCED NOR SHALL THE INFORMATION CONTAINED HEREIN BE USED BY OR DISCLOSED TO OTHER EXCEPT AS EXPRESSLY AUTHORIZED BY CORE INDUSTRIES INC, D.B.A. STAR TRAC.

MATERIAL
SEE BOM

FINISH

VENDOR: P/N:

ITEM NO.	PART NUMBER	DESCRIPTION	QTY
1	740-7124	SPRING, BRAKE KNOB	1
2	740-7178	NUT, M10X1.5, HE, SS	1
3	740-7189	NUT, M10X1.5, ACORN, SS	1
4	740-7573	BUSHING, THREADED, BRAKE	1
5	740-7598	CUSHION, BRAKE ASSY	1
6	740-7669	ASSY, KNOB, BRAKE, SPINNER	1

THIRD ANGLE PROJECTION

DRAWN	INITIAL DMM	DATE 03/07/2011
CHECKED		
APPROVED		

CORE IND INC., DBA

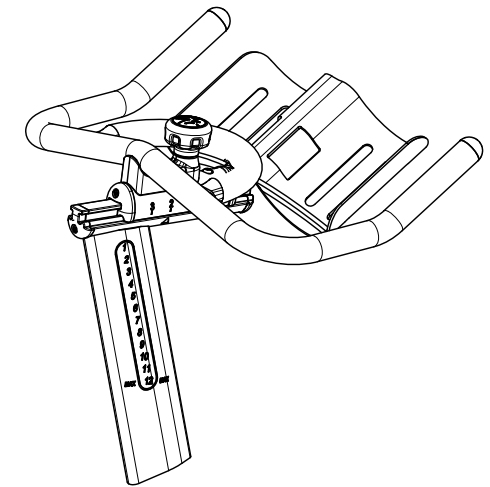
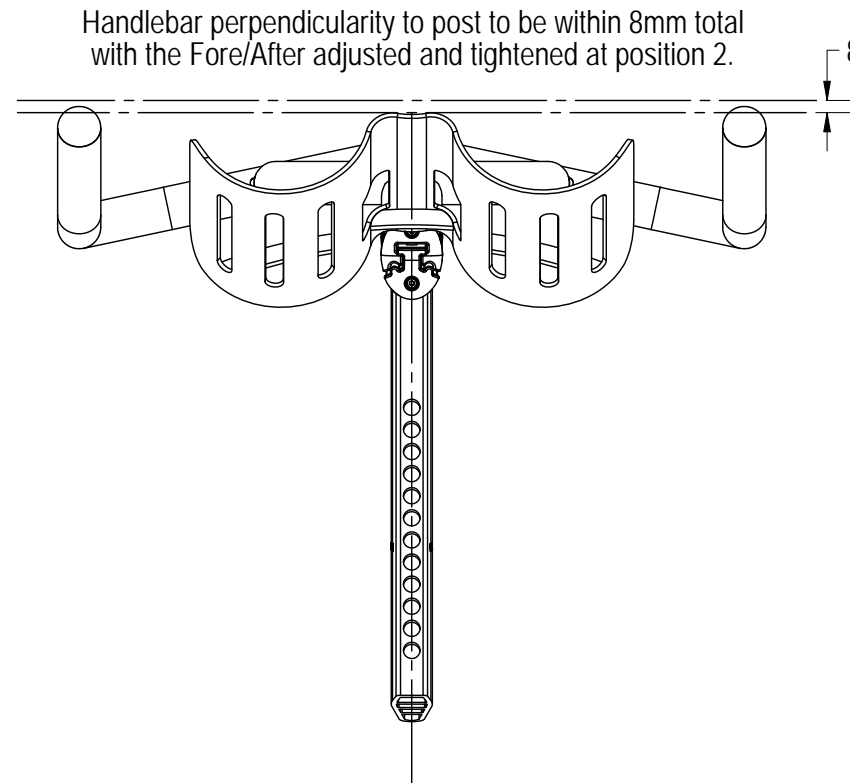
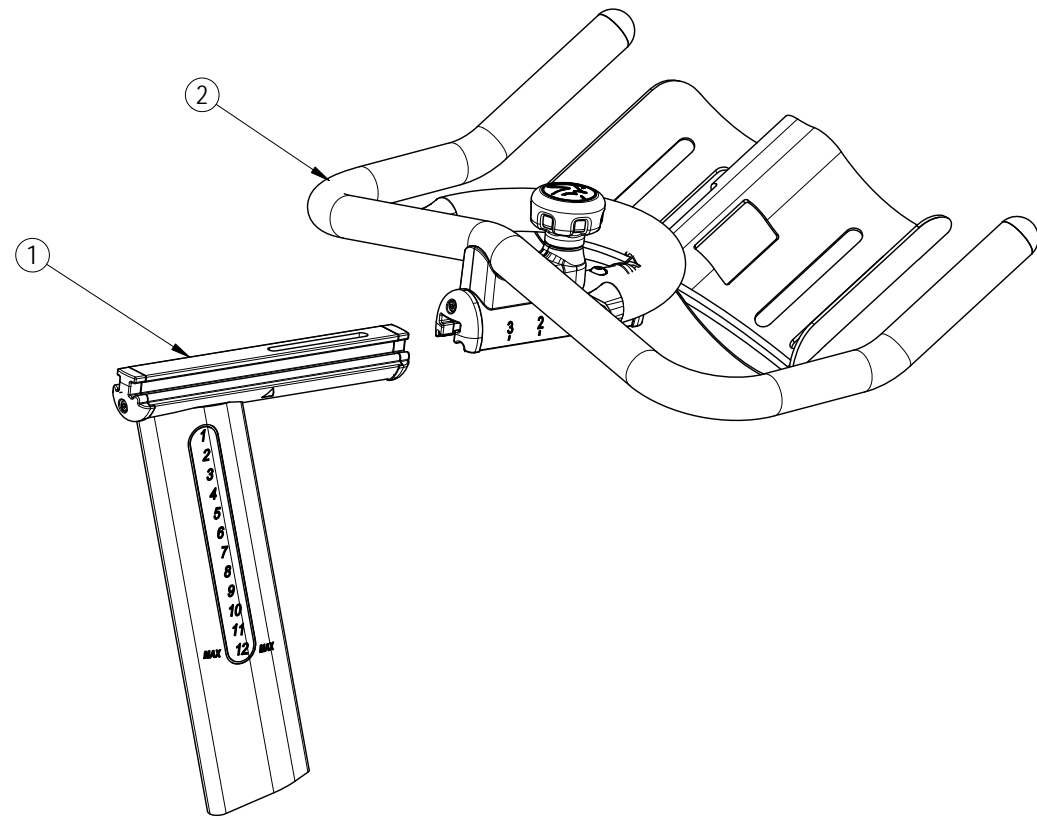
 14410 Myford Road
 Irvine CA 92606

STAR TRAC PART NO
740-7995

TITLE
ASSY, BRAKE, ADJUSTMENT KNOB

SCALE: 1:5 | SHEET 1 OF 1 | SHEET SIZE: A

REVISION HISTORY				
REV	DATE	DESCRIPTION	ECO	BY
A	01/18/2012	PRODUCTION RELEASE	13641	DMM



NOTICE OF PROPRIETARY INFORMATION
 THIS DOCUMENT SHALL NOT BE REPRODUCED NOR SHALL THE INFORMATION CONTAINED HEREIN BE USED BY OR DISCLOSED TO OTHER EXCEPT AS EXPRESSLY AUTHORIZED BY CORE INDUSTRIES INC, D.B.A. STAR TRAC.

DOCUMENT STATUS:

ITEM NO.	PART NUMBER	DESCRIPTION	QTY
1	740-8264	ASSY, HANDLEBAR POST	1
2	740-8265	ASSY, HANDLEBAR, W/ FORE-AFT	1

CLASS OF WORK	UNLESS OTHERWISE SPECIFIED DIMS ARE IN mm. TOLERANCES FOR MEASURE OF LENGTH ARE:								ANGLES = ±2°
	0.5 to 3	> 3 to 6	> 6 to 30	> 30 to 120	> 120 to 400	> 400 to 1000	> 1000 to 2000	> 2000	
FINE	±0.05	±0.05	±0.1	±0.15	±0.2	±0.3	±0.5	----	
MEDIUM	±0.1	±0.1	±0.2	±0.3	±0.5	±0.8	±1.2	±2	
COARSE	±0.2	±0.3	±0.5	±0.8	±1.2	±2	±3	±4	
VERY COARSE	----	±0.5	±1	±1.5	±2.5	±4	±6	±8	

MATERIAL
SEE BOM

FINISH
N/A

VENDOR: N/A **P/N:** N/A

THIRD ANGLE PROJECTION

DRAWN	INITIAL	DATE
CHECKED		
APPROVED		

U.O.M. MM

CORE IND INC., DBA 14410 Myford Road
 Irvine CA 92606

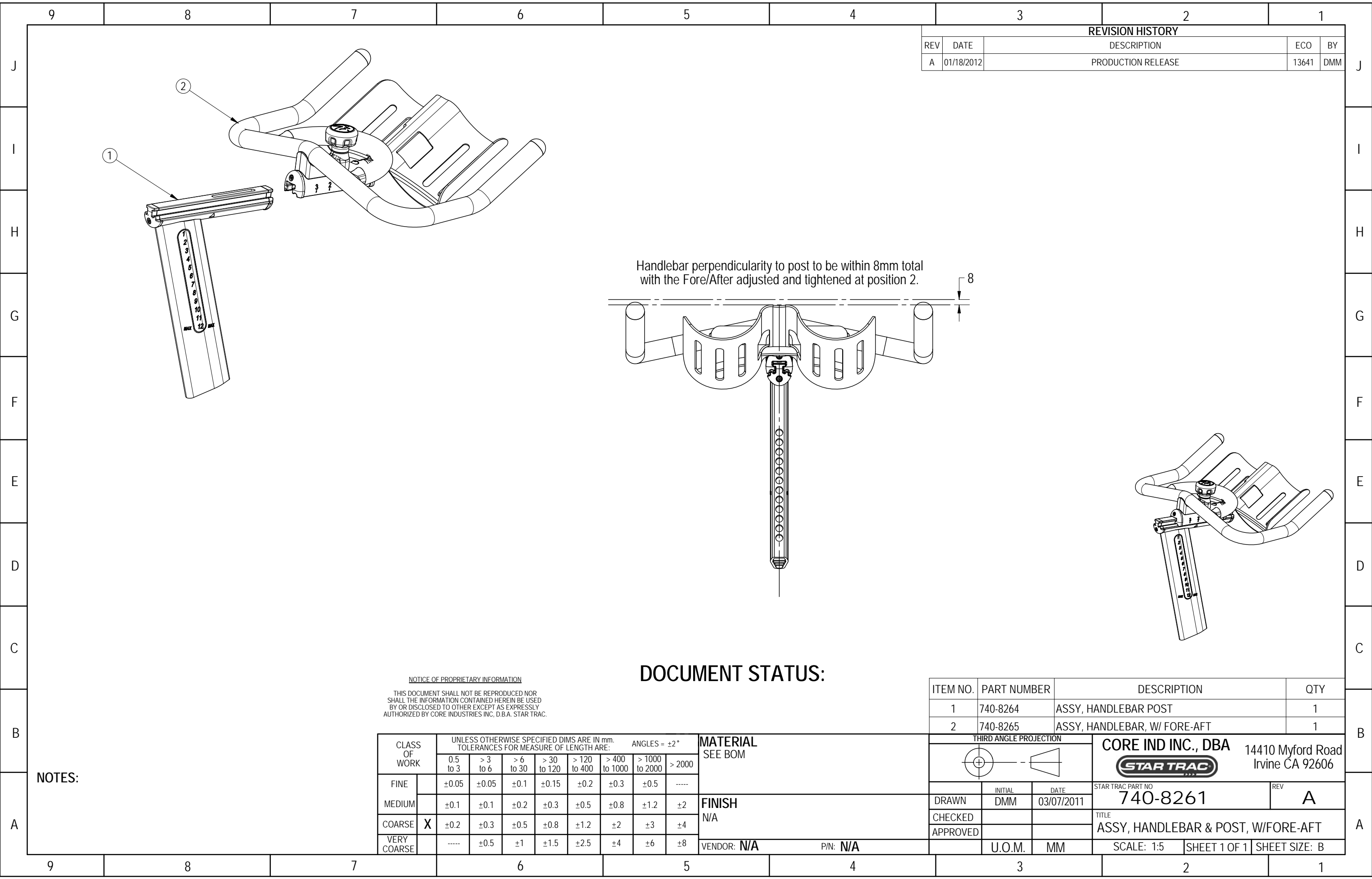
STAR TRAC

STAR TRAC PART NO: **740-8261** REV: **A**

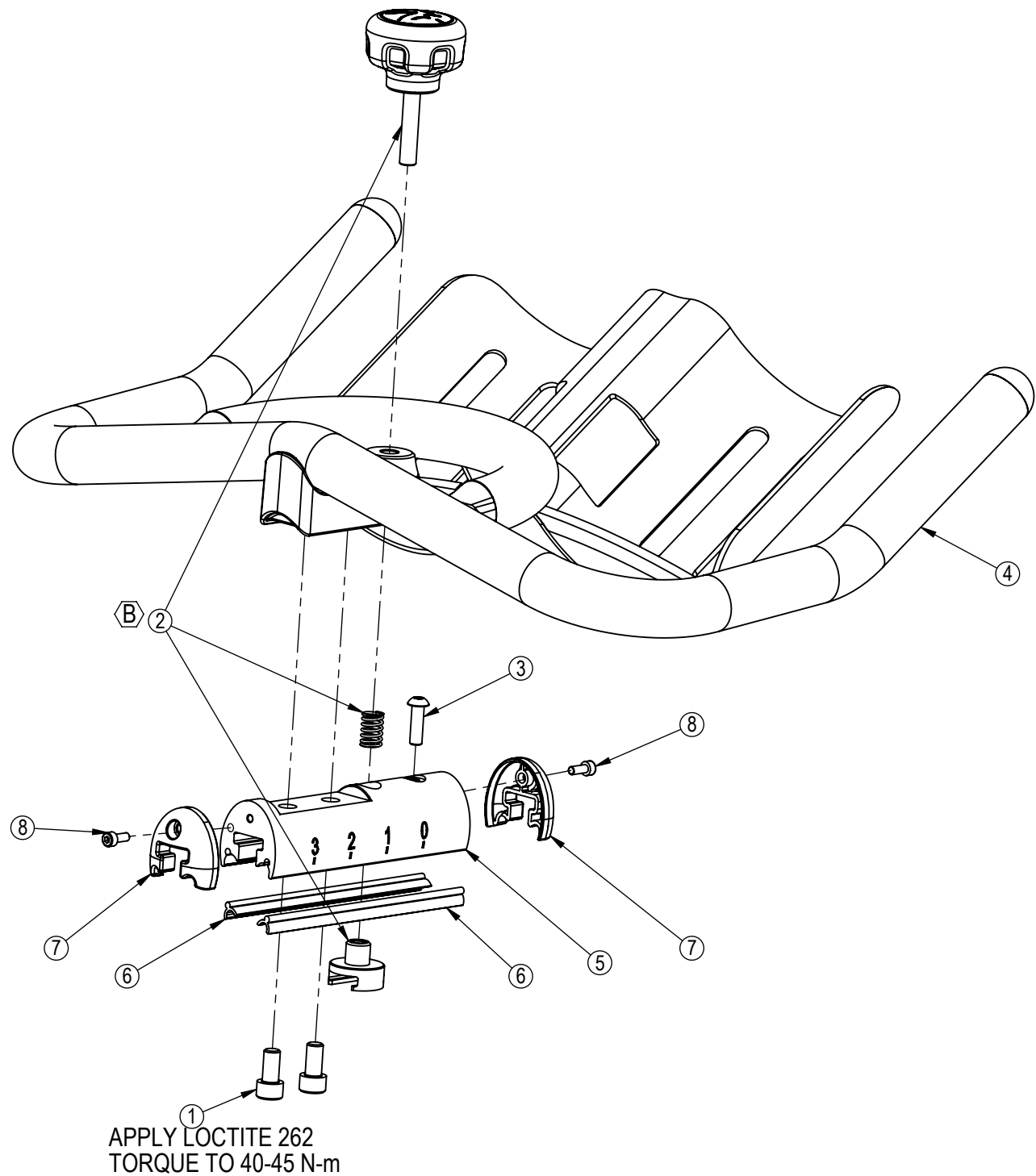
TITLE: **ASSY, HANDLEBAR & POST, W/FORE-AFT**

SCALE: 1:5 SHEET 1 OF 1 SHEET SIZE: B

NOTES:



REVISION HISTORY				
REV	DATE	DESCRIPTION	ECO	BY
A	1/26/2012	PRODUCTION RELEASE	13641	FJM
B	3/23/2012	ADDED KIT 740-7626-KT	13720	DMM



ITEM NO.	PART NUMBER	DESCRIPTION	QTY.
1	740-7620	SCREW, M8X1.25, 20mm, SHCS	2
2	740-7626-KT	KIT, HBAR KNOB, F/A ADJUST, SPINNER	1
3	740-8177	SCREW, M6X1x20L, BH, HE, AS,BO	1
4	740-8254	WELDMENT, HANDLEBAR	1
5	740-8255	SLIDER, HANDLEBAR, TOP	1
6	740-8257	INSERT, HBAR, FORE/AFT ADJUST	2
7	740-8259	END CAP, SLIDER, FEMALE	2
8	740-8262	SCREW, M4 X .7, 10mm, SHCS, HK, SS	2

NOTICE OF PROPRIETARY INFORMATION
 THIS DOCUMENT SHALL NOT BE REPRODUCED NOR SHALL THE INFORMATION CONTAINED HEREIN BE USED BY OR DISCLOSED TO OTHER EXCEPT AS EXPRESSLY AUTHORIZED BY CORE INDUSTRIES, INC., D.B.A. STAR TRAC.

DOCUMENT STATUS:

NOTES:

CLASS OF WORK	UNLESS OTHERWISE SPECIFIED DIMS ARE IN mm. TOLERANCES FOR MEASURE OF LENGTH ARE:							ANGLES = ±2°
	0.5 to 3	>3 to 6	>6 to 30	>30 to 120	>120 to 400	>400 to 1000	>1000 to 2000	
FINE	±0.05	±0.05	±0.1	±0.15	±0.2	±0.3	±0.5	----
MEDIUM X	±0.1	±0.1	±0.2	±0.3	±0.5	±0.8	±1.2	±2
COARSE	±0.2	±0.3	±0.5	±0.8	±1.2	±2	±3	±4
VERY COARSE	----	±0.5	±1	±1.5	±2.5	±4	±6	±8

MATERIAL SEE BOM

FINISH N/A

VENDOR: N/A

P/N: N/A

THIRD ANGLE PROJECTION



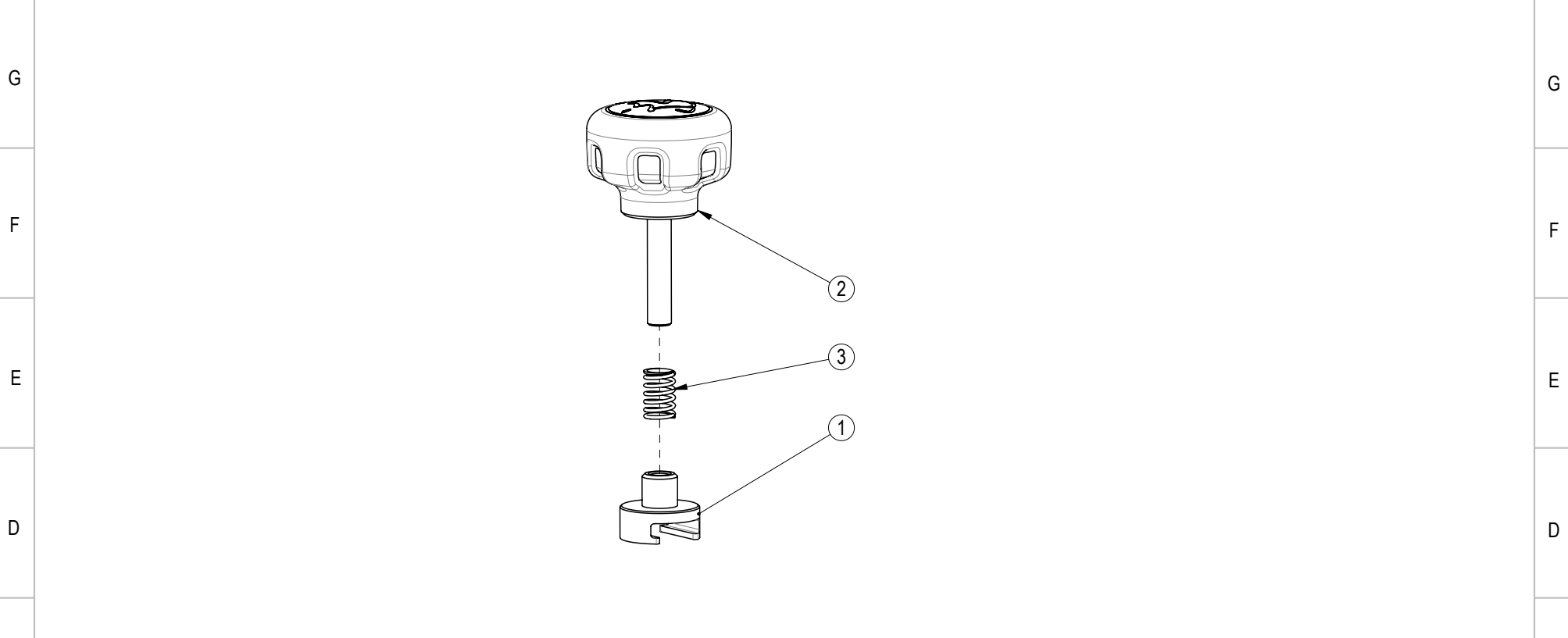
CORE INDUSTRIES, INC. DBA **STAR TRAC** 14410 Myford Road Irvine CA 92606

DRAWN	INITIAL FJM	DATE 01-26-12
CHECKED		
APPROVED		

STARTRAC PART NO	740-8265	REV	B
TITLE	ASSY, HANDLEBAR, W/ FORE-AFT		
SCALE: 1:3	SHEET 1 OF 1	SHEET SIZE: B	

H NOTES:

REVISION HISTORY				
REV	DATE	DESCRIPTION	ECO	BY
A	3/23/2012	PRODUCTION RELEASE	13270	DMM



CLASS OF WORK	FINE	MEDIUM	COARSE	VERY COARSE
		X		

UNLESS OTHERWISE SPECIFIED DIMS ARE IN mm. TOLERANCES FOR MEASURE OF LENGTH ARE: ANGLES ±2°	0.5 to 3	±0.05	±0.1	±0.2	----
	> 3 to 6	±0.05	±0.1	±0.3	±0.5
	> 6 to 30	±0.1	±0.2	±0.5	±1
	> 30 to 120	±0.15	±0.3	±0.8	±1.5
	> 120 to 400	±0.2	±0.5	±1.2	±2.5
	> 400 to 1000	±0.3	±0.8	±2	±4
	> 1000 to 2000	±0.5	±1.2	±3	±6
	> 2000	----	±2	±4	±8

DOCUMENT STATUS:

NOTICE OF PROPRIETARY INFORMATION
 THIS DOCUMENT SHALL NOT BE REPRODUCED NOR SHALL THE INFORMATION CONTAINED HEREIN BE USED BY OR DISCLOSED TO OTHER EXCEPT AS EXPRESSLY AUTHORIZED BY CORE INDUSTRIES INC, D.B.A. STAR TRAC.

MATERIAL
SEE BOM

FINISH
N/A

VENDOR: N/A P/N: N/A

ITEM NO.	PART NUMBER	DESCRIPTION	QTY.
1	740-7626	HOLDING NUT, SEAT SLIDER, NXT/E-SPINNER	1
2	740-8263	KNOB, ADJUST, W/ BRASS INSERT	1
3	740-8330	SPRING, FORE/AFT ADJUST, SPINNER	1

THIRD ANGLE PROJECTION

DRAWN	INITIAL DMM	DATE 03/22/12
CHECKED		
APPROVED		
	U.O.M.	MM

CORE INDUSTRIES INC., DBA
 14410 Myford Road
 Irvine CA 92606

STAR TRAC PART NO
740-7626-KT

TITLE
KIT, HBAR KNOB, F/A ADJUST, SPINNER

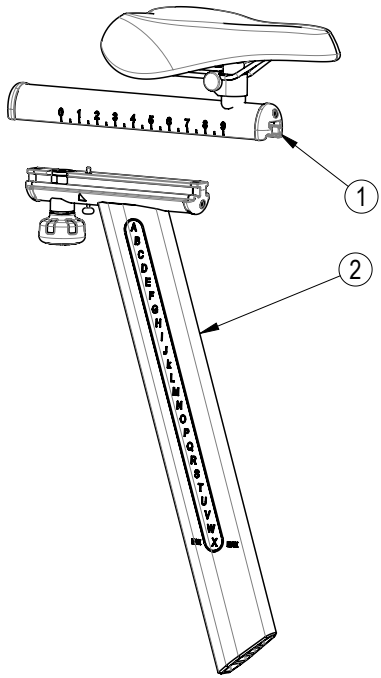
SCALE: 1:2 | SHEET 1 OF 1 | SHEET SIZE: A

10 9 8 7 6 5 4 3 2 1

H NOTES:

REVISION HISTORY				
REV	DATE	DESCRIPTION	ECO	BY
A	2/2/2012	PRODUCTION RELEASE	13652	DMM

G
F
E
D
C
B
A



H
G
F
E
D
C
B
A

CLASS OF WORK	FINE	MEDIUM	COARSE	VERY COARSE
			X	

UNLESS OTHERWISE SPECIFIED DIMS ARE IN mm. TOLERANCES FOR MEASURE OF LENGTH ARE: ANGLES ±2°	0.5 to 3	±0.05	±0.1	±0.2	----
	> 3 to 6	±0.05	±0.1	±0.3	±0.5
	> 6 to 30	±0.1	±0.2	±0.5	±1
	> 30 to 120	±0.15	±0.3	±0.8	±1.5
	> 120 to 400	±0.2	±0.5	±1.2	±2.5
	> 400 to 1000	±0.3	±0.8	±2	±4
	> 1000 to 2000	±0.5	±1.2	±3	±6
	> 2000	----	±2	±4	±8

DOCUMENT STATUS:

NOTICE OF PROPRIETARY INFORMATION
 THIS DOCUMENT SHALL NOT BE REPRODUCED NOR SHALL THE INFORMATION CONTAINED HEREIN BE USED BY OR DISCLOSED TO OTHER EXCEPT AS EXPRESSLY AUTHORIZED BY CORE INDUSTRIES INC. D.B.A. STAR TRAC.

MATERIAL
SEE BOM

FINISH
N/A

VENDOR: P/N:

ITEM NO.	PART NUMBER	DESCRIPTION	QTY.
1	740-8271	ASSY, SEAT, W/ SLIDER	1
2	740-8273	ASSY, SEAT, W/ SLIDER	1

THIRD ANGLE PROJECTION

DRAWN	INITIAL DMM	DATE 02/02/2012
CHECKED		
APPROVED		

CORE INDUSTRIES INC., DBA

 14410 Myford Road
 Irvine CA 92606

STAR TRAC PART NO
740-8270

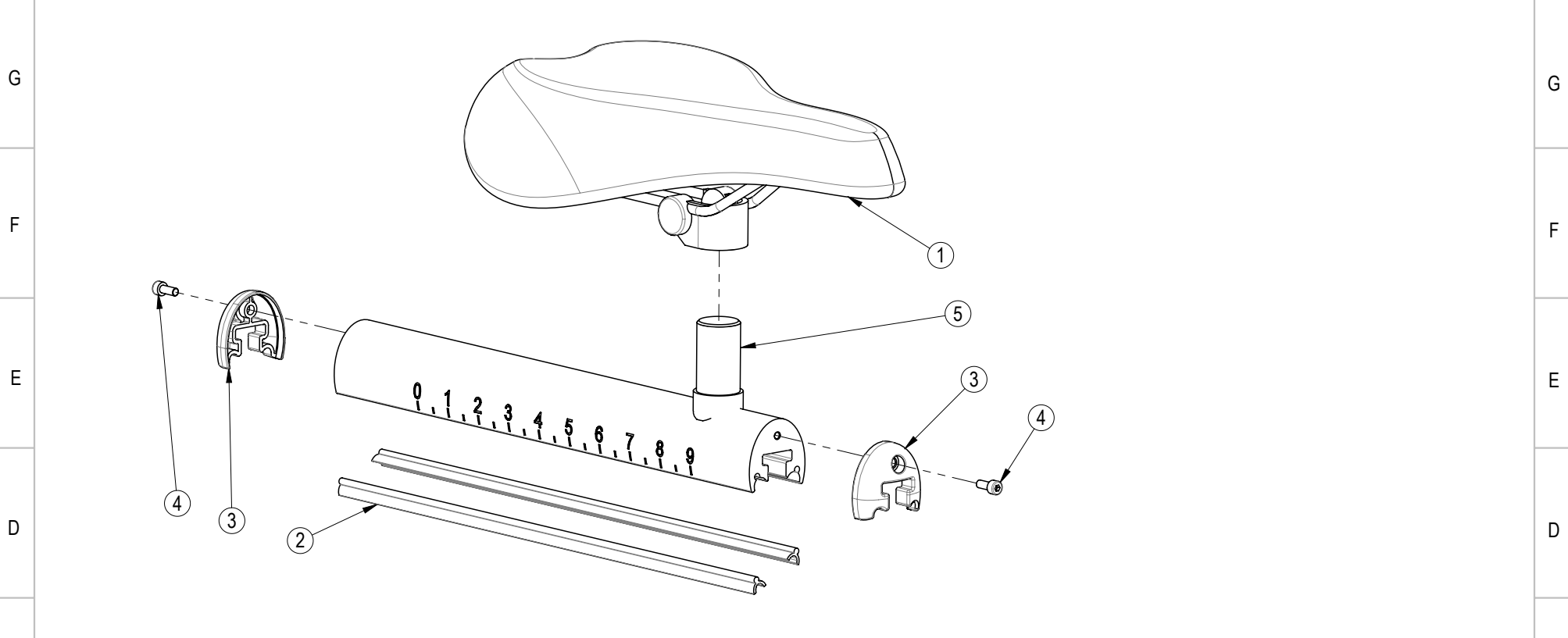
TITLE
ASSY, SEAT W/ POST, NXT

SCALE: 1:8 | SHEET 1 OF 1 | SHEET SIZE: A

10 9 8 7 6 5 4 3 2 1

H NOTES:

REVISION HISTORY				
REV	DATE	DESCRIPTION	ECO	BY
A	2/2/2012	PRODUCTION RELEASE	13652	DMM



CLASS OF WORK	FINE	MEDIUM	COARSE	VERY COARSE
			X	

UNLESS OTHERWISE SPECIFIED DIMS ARE IN mm. TOLERANCES FOR MEASURE OF LENGTH ARE: ANGLES ±2°	0.5 to 3	±0.05	±0.1	±0.2	----
	> 3 to 6	±0.05	±0.1	±0.3	±0.5
	> 6 to 30	±0.1	±0.2	±0.5	±1
	> 30 to 120	±0.15	±0.3	±0.8	±1.5
	> 120 to 400	±0.2	±0.5	±1.2	±2.5
	> 400 to 1000	±0.3	±0.8	±2	±4
	> 1000 to 2000	±0.5	±1.2	±3	±6
	> 2000	----	±2	±4	±8

DOCUMENT STATUS:

NOTICE OF PROPRIETARY INFORMATION
 THIS DOCUMENT SHALL NOT BE REPRODUCED NOR SHALL THE INFORMATION CONTAINED HEREIN BE USED BY OR DISCLOSED TO OTHER EXCEPT AS EXPRESSLY AUTHORIZED BY CORE INDUSTRIES INC. D.B.A. STAR TRAC.

MATERIAL
SEE BOM

FINISH
N/A

VENDOR: N/A P/N: N/A

ITEM NO.	PART NUMBER	DESCRIPTION	QTY.
1	740-8077	SADDLE, SILVER, NXT	1
2	740-8257	SLIDER INSERT, 225mm L	2
3	740-8259	END CAP, SLIDER, FEMALE	2
4	740-8262	SCREW, M4 X .7, 10mm, SHCS, HK, SS	2
5	740-8272	WELDMENT, TOP SLIDER, SEAT	1

THIRD ANGLE PROJECTION

DRAWN	INITIAL DMM	DATE 02/02/2012
CHECKED		
APPROVED		

CORE INDUSTRIES INC., DBA
 14410 Myford Road
 Irvine CA 92606

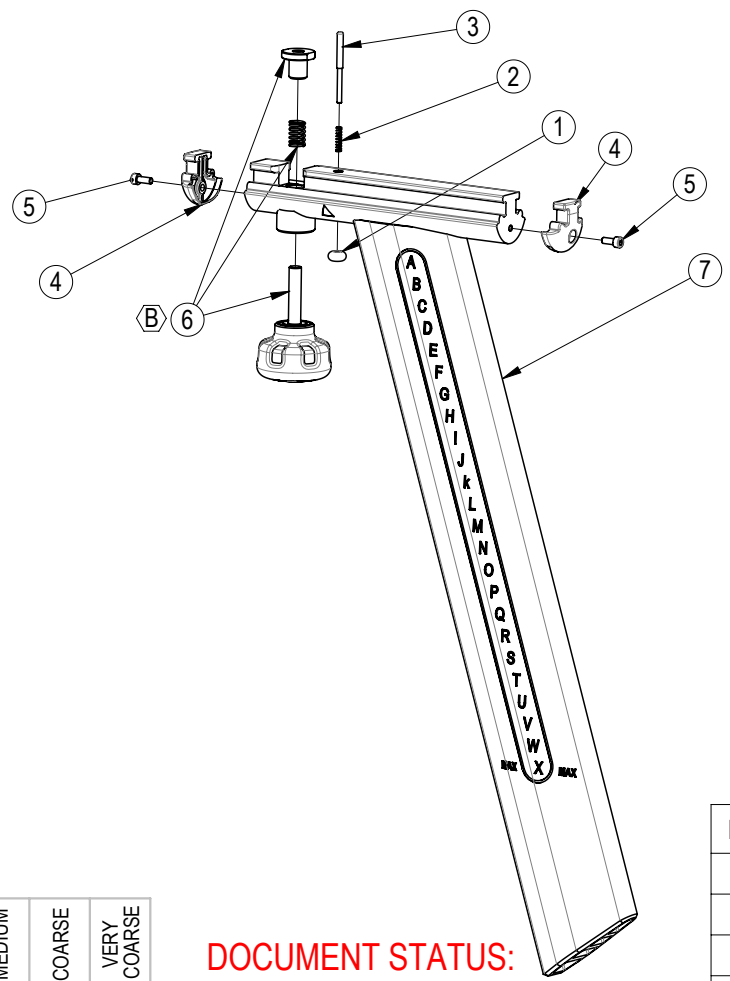
STAR TRAC PART NO
740-8271

TITLE
ASSY, SEAT, W/ SLIDER

SCALE: 1:3 | SHEET 1 OF 1 | SHEET SIZE: A

H NOTES:

REVISION HISTORY				
REV	DATE	DESCRIPTION	ECO	BY
A	2/2/2012	PRODUCTION RELEASE	13652	DMM
B	3/23/2012	REPLACED 740-7666 WITH 740-8263-KT	13720	DMM



CLASS OF WORK	FINE	MEDIUM	COARSE	VERY COARSE
			X	

UNLESS OTHERWISE SPECIFIED DIMS ARE IN mm. TOLERANCES FOR MEASURE OF LENGTH ARE: ANGLES ±2°	0.5 to 3	±0.05	±0.1	±0.2	----
	> 3 to 6	±0.05	±0.1	±0.3	±0.5
	> 6 to 30	±0.1	±0.2	±0.5	±1
	> 30 to 120	±0.15	±0.3	±0.8	±1.5
	> 120 to 400	±0.2	±0.5	±1.2	±2.5
	> 400 to 1000	±0.3	±0.8	±2	±4
	> 1000 to 2000	±0.5	±1.2	±3	±6
	> 2000	----	±2	±4	±8

DOCUMENT STATUS:

NOTICE OF PROPRIETARY INFORMATION
 THIS DOCUMENT SHALL NOT BE REPRODUCED NOR SHALL THE INFORMATION CONTAINED HEREIN BE USED BY OR DISCLOSED TO OTHER EXCEPT AS EXPRESSLY AUTHORIZED BY CORE INDUSTRIES INC. D.B.A. STAR TRAC.

MATERIAL
SEE BOM

FINISH
N/A

VENDOR: N/A P/N: N/A

ITEM NO.	PART NUMBER	DESCRIPTION	QTY.
1	740-7270	KNOB, SEAT SLIDER, STOPPER	1
2	740-7271	SPRING, SEAT SLIDER, NXT	1
3	740-7526	PIN, STOP, SEAT SLIDER	1
4	740-8260	END CAP, SLIDER, MALE	2
5	740-8262	SCREW, M4 X .7, 10mm, SHCS, HK, SS	2
6	740-8263-KT	KIT, SEAT KNOB, F/A ADJUST, SPINNER	1
7	740-8274	WELDMNT, BOTTOM SLIDER, SEAT	1

THIRD ANGLE PROJECTION

DRAWN	INITIAL DMM	DATE 02/02/2012
CHECKED		
APPROVED		

CORE INDUSTRIES INC., DBA
 14410 Myford Road
 Irvine CA 92606

STAR TRAC PART NO
740-8273

TITLE
ASSY, SEAT POST, W/ SLIDER

SCALE: 1:5 | SHEET 1 OF 1 | SHEET SIZE: A

10 9 8 7 6 5 4 3 2 1

H NOTES:

REVISION HISTORY

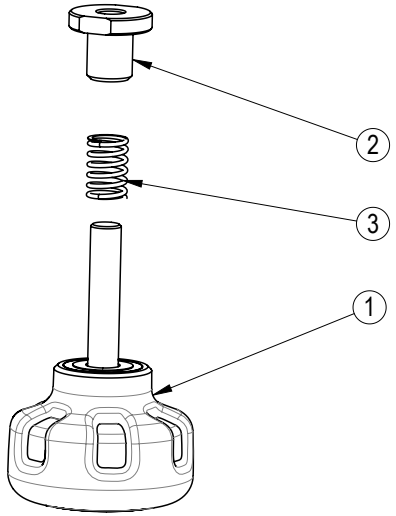
REV	DATE	DESCRIPTION	ECO	BY
A	3/23/2012	PRODUCTION RELEASE	13720	DMM

G

F

E

D



C

B

A

CLASS OF WORK	FINE	MEDIUM	COARSE	VERY COARSE
		X		

UNLESS OTHERWISE SPECIFIED DIMS ARE IN mm. TOLERANCES FOR MEASURE OF LENGTH ARE: ANGLES ±2°	0.5 to 3	±0.05	±0.1	±0.2	----
	> 3 to 6	±0.05	±0.1	±0.3	±0.5
	> 6 to 30	±0.1	±0.2	±0.5	±1
	> 30 to 120	±0.15	±0.3	±0.8	±1.5
	> 120 to 400	±0.2	±0.5	±1.2	±2.5
	> 400 to 1000	±0.3	±0.8	±2	±4
	> 1000 to 2000	±0.5	±1.2	±3	±6
	> 2000	----	±2	±4	±8

DOCUMENT STATUS:

NOTICE OF PROPRIETARY INFORMATION
 THIS DOCUMENT SHALL NOT BE REPRODUCED NOR SHALL THE INFORMATION CONTAINED HEREIN BE USED BY OR DISCLOSED TO OTHER EXCEPT AS EXPRESSLY AUTHORIZED BY CORE INDUSTRIES INC, D.B.A. STAR TRAC.

MATERIAL
SEE BOM

FINISH
N/A

VENDOR: N/A P/N: N/A

ITEM NO.	PART NUMBER	DESCRIPTION	QTY.
1	740-8263	KNOB, ADJUST, W/ BRASS INSERT	1
2	740-8329	HOLDING NUT, SEAT SLIDER, SPINNER	1
3	740-8330	SPRING, FORE/AFT ADJUST, SPINNER	1

THIRD ANGLE PROJECTION

DRAWN: DMM INITIAL: DMM DATE: 03/22/12

CHECKED: APPROVED:

U.O.M. MM

CORE INDUSTRIES INC., DBA
 14410 Myford Road
 Irvine CA 92606

STAR TRAC PART NO: **740-8263-KT** REV: **A**

TITLE: **KIT, SEAT KNOB, F/A ADJUST, SPINNER**

SCALE: 1:2 | SHEET 1 OF 1 | SHEET SIZE: A

10 9 8 7 6 5 4 3 2 1