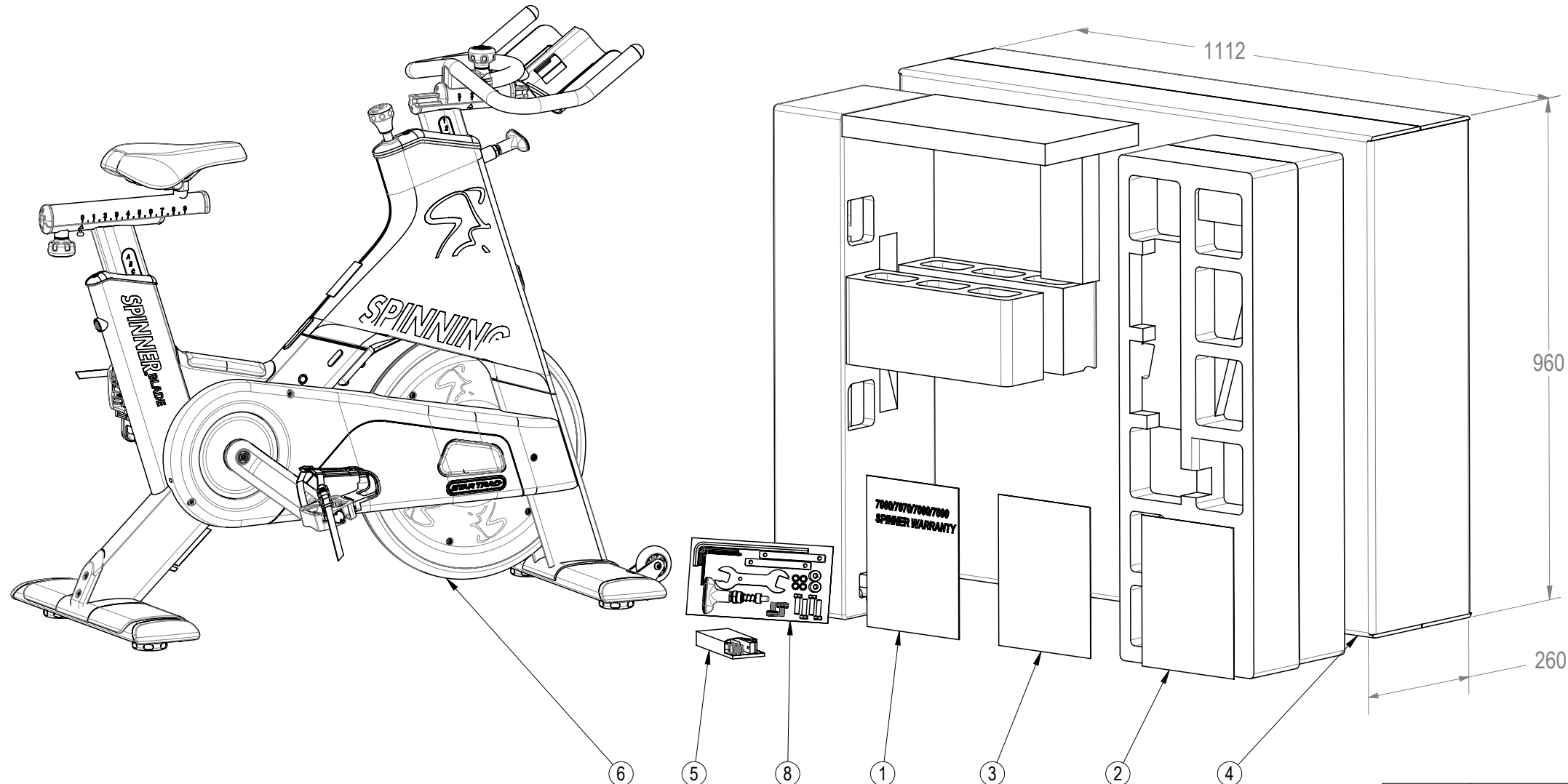


REVISION HISTORY				
REV	DATE	DESCRIPTION	ECO	BY
A	8/5/2011	PRODUCTION RELEASE	13511	DMM
B	2/2/2012	ADDED HANDLEBAR AND SEATASSY; ADDED TOOLKIT	13652	DMM



ITEM NO.	PART NUMBER	DESCRIPTION	QTY.
1	620-7831	CARD,REGIST.,WARRANTY, SPINNER, 7060/7070/7080/7090	1
2	620-8068	USER MANUAL, SPINNER PRO/NXT/BLADE	1
3	620-8069	MANUAL, SP INSTALLATION, BLADE	1
4	740-7316	CARTON, SPINNER NXT	1
5	740-7323	KIT, SPARE, BRAKE PAD	1
6	740-7930	ASSY, SPINNER, BLADE	1
7	740-8182	STYROFOAM, PACKING, E-SP	1
8	740-8290	KIT, TOOL, INSTALL, BLADE	1

NOTICE OF PROPRIETARY INFORMATION
 THIS DOCUMENT SHALL NOT BE REPRODUCED NOR SHALL THE INFORMATION CONTAINED HEREIN BE USED BY OR DISCLOSED TO OTHER EXCEPT AS EXPRESSLY AUTHORIZED BY CORE INDUSTRIES INC, D.B.A. STAR TRAC.

DOCUMENT STATUS:

NOTES:
 1. SHIPPING WEIGHT: 130 LBS.

CLASS OF WORK	UNLESS OTHERWISE SPECIFIED DIMS ARE IN mm. TOLERANCES FOR MEASURE OF LENGTH ARE:							ANGLES = ±2°
	0.5 to 3	> 3 to 6	> 6 to 30	> 30 to 120	> 120 to 400	> 400 to 1000	> 1000 to 2000	
FINE	±0.05	±0.05	±0.1	±0.15	±0.2	±0.3	±0.5	----
MEDIUM	±0.1	±0.1	±0.2	±0.3	±0.5	±0.8	±1.2	±2
COARSE	X ±0.2	±0.3	±0.5	±0.8	±1.2	±2	±3	±4
VERY COARSE	----	±0.5	±1	±1.5	±2.5	±4	±6	±8

MATERIAL SEE BOM
 FINISH N/A
 VENDOR: N/A P/N: N/A

THIRD ANGLE PROJECTION

CORE IND INC., DBA **STAR TRAC** 14410 Myford Road Irvine CA 92606

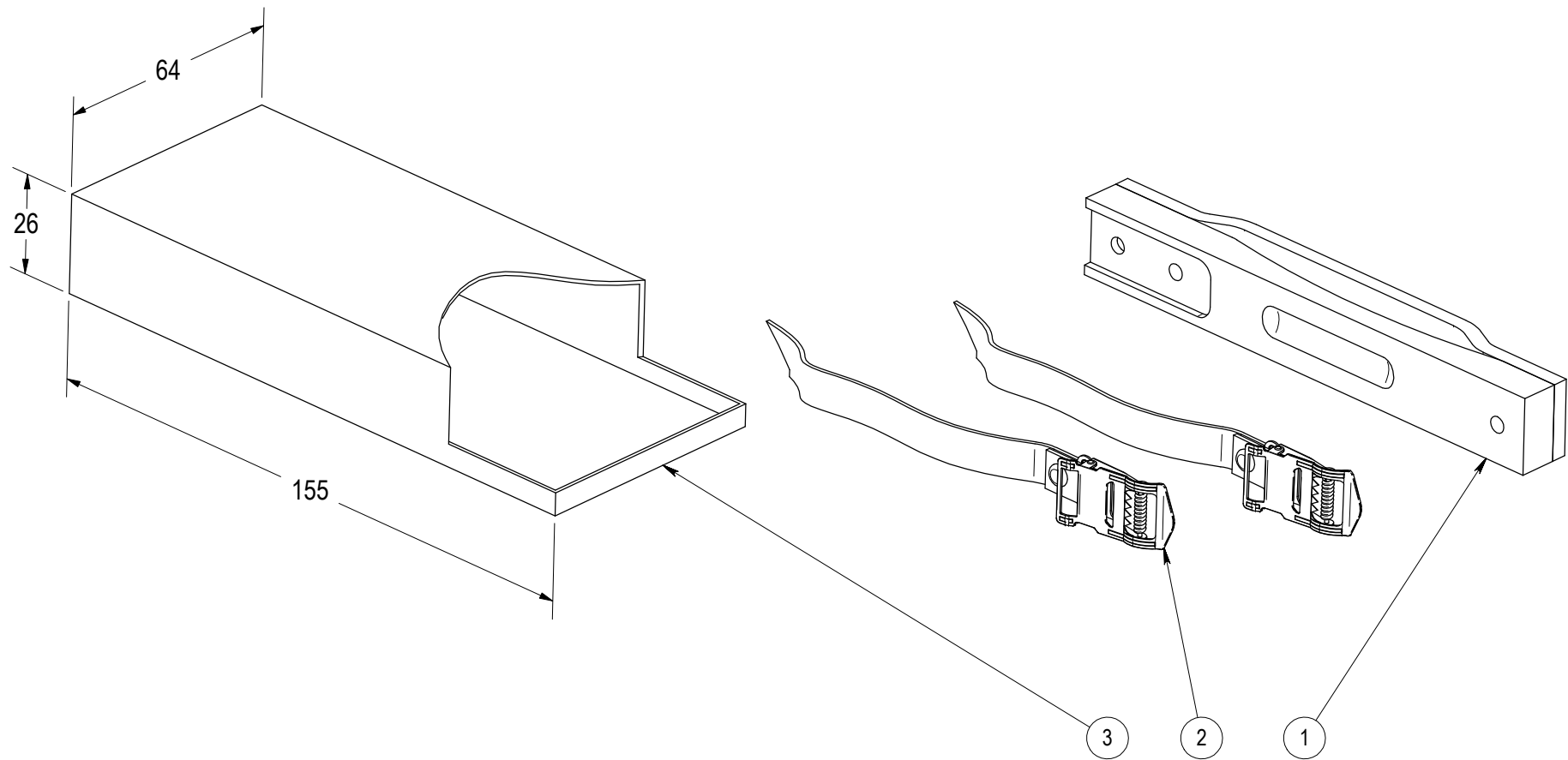
STAR TRAC PART NO **9-7190-MINTPO** REV **B**

TITLE **SPINNER BLADE**

DRAWN INITIAL DMM DATE 08/05/2011
 CHECKED
 APPROVED

U.O.M. MM SCALE: 1:10 | SHEET 1 OF 1 | SHEET SIZE: B

REVISION HISTORY				
REV	DATE	DESCRIPTION	ECO	BY
G	04-07-10	UPDATE EXPLODED VIEW, UPDATE BOM	13141	VW



ITEM NO.	PART NUMBER	DESCRIPTION	QTY.
1	740-6872	KIT, ASSY, PAD, BRAKE, SPINNER, 7090/80/70/60	1
2	740-7307	STRAP, PEDAL, PRO	2
3	740-7323-001	CARTON, SPARE KIT	1

**DOCUMENT STATUS:
RELEASE**

NOTICE OF PROPRIETARY INFORMATION

THIS DOCUMENT SHALL NOT BE REPRODUCED NOR SHALL THE INFORMATION CONTAINED HEREIN BE USED BY OR DISCLOSED TO OTHER EXCEPT AS EXPRESSLY AUTHORIZED BY UNISEN INC, D.B.A. STAR TRAC.

CLASS OF WORK	UNLESS OTHERWISE SPECIFIED DIMS ARE IN mm. TOLERANCES FOR MEASURE OF LENGTH ARE:								ANGLES = ±2°
	0.5 to 3	> 3 to 6	> 6 to 30	> 30 to 120	> 120 to 400	> 400 to 1000	> 1000 to 2000	> 2000	
FINE	±0.05	±0.05	±0.1	±0.15	±0.2	±0.3	±0.5	----	
MEDIUM	±0.1	±0.1	±0.2	±0.3	±0.5	±0.8	±1.2	±2	
COARSE	±0.2	±0.3	±0.5	±0.8	±1.2	±2	±3	±4	
VERY COARSE	----	±0.5	±1	±1.5	±2.5	±4	±6	±8	

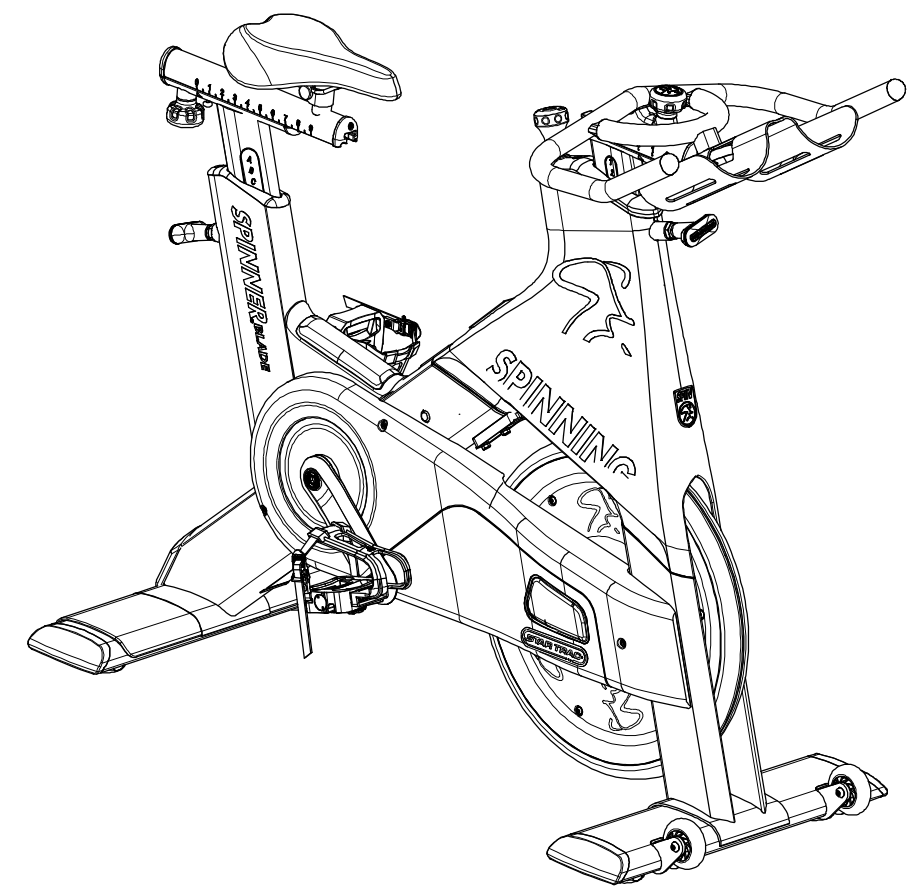
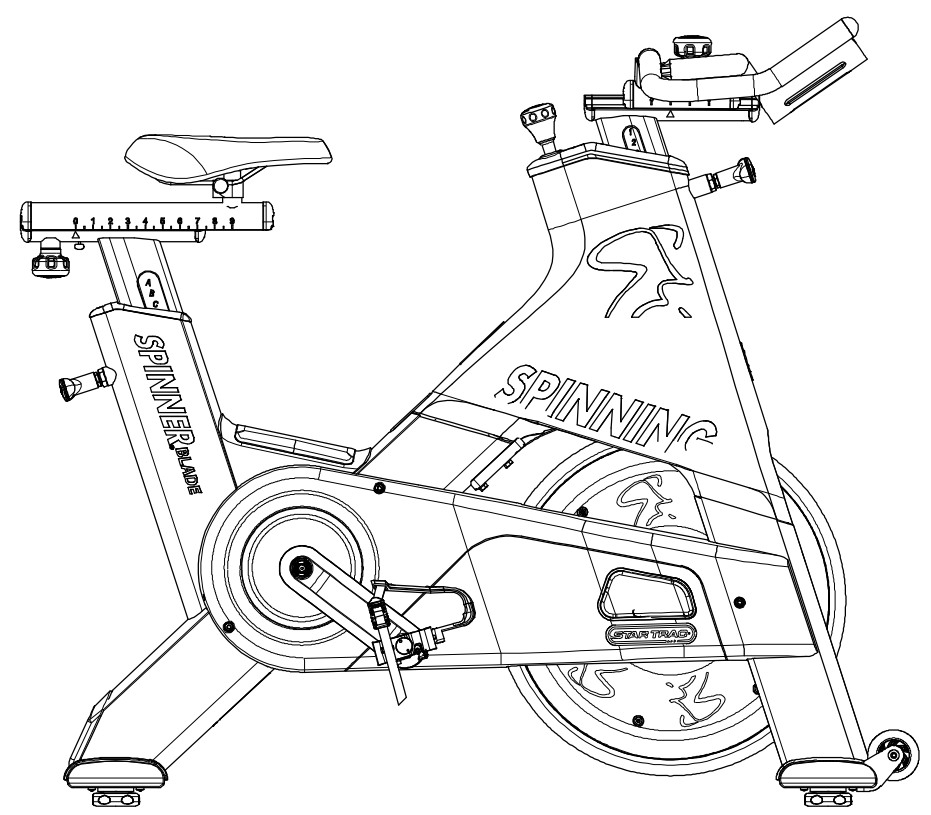
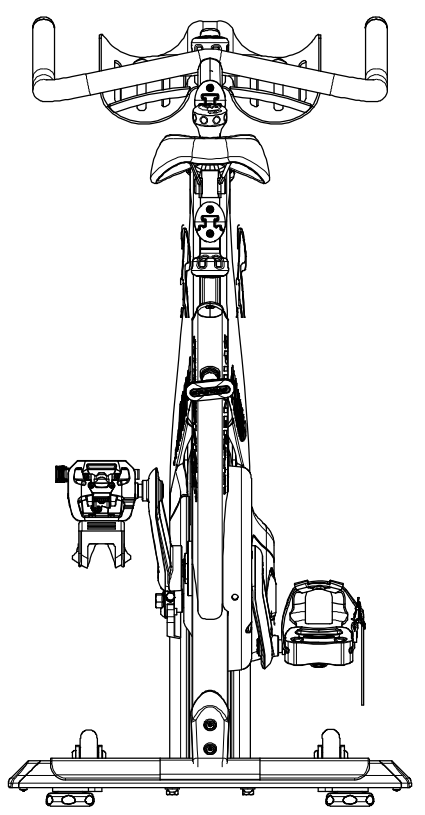
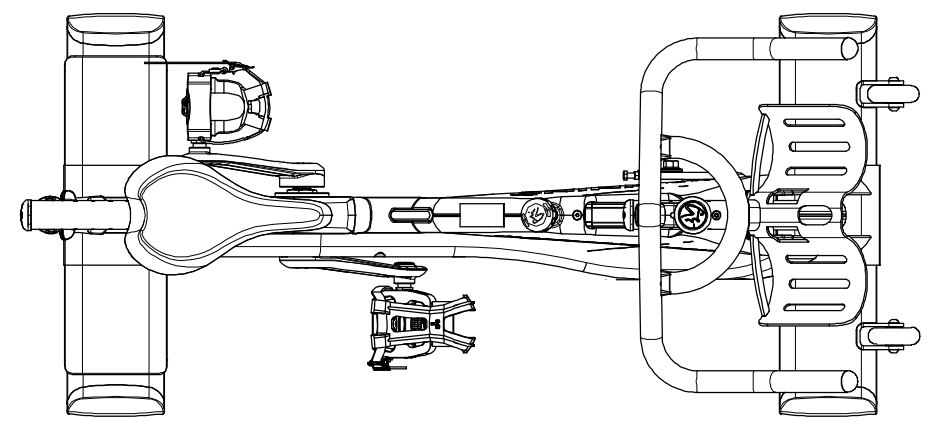
MATERIAL SEE BOM	THIRD ANGLE PROJECTION		
	DRAWN	INITIAL DMM	DATE 12/10/09
	CHECKED		
	APPROVED		
VENDOR: N/A		P/N: N/A	
	U.O.M.	MM	

UNISEN, INC. DBA		14410 Myford Road Irvine CA 92606	
STARTRAC PART NO		REV	
740-7323		G	
TITLE			
KIT, SPARE, BRAKE PAD			
SCALE: 1:1.5	SHEET 1 OF 1	SHEET SIZE: B	

9 8 7 6 5 4 3 2 1

NOTES:

REVISION HISTORY					
REV	DATE	DESCRIPTION	ECO	BY	
A	8/17/2011	PRODUCTION RELEASE	13555	DMM	J
B	11/29/2011	REPLACE P/N 740-7817 WITH 740-6899; REPLACE P/N 740-8192 WITH 740-8247 AND REMOVE P/N 740-8188 FROM THE ASSEMBLY; REPLACE P/N 740-7679 WITH 740-7589. ADD P/N 740-8250	13595	SD	I
C	2/2/2012	UPDATED HANDLEBAR AND SEAT ASSY; UPDATED MAINFRAME WITH RIVNUTS FOR CHAINGUARD MOUNTING; 740-8189 WAS 731-0379	13652	DMM	H
D	3/5/2013	CHANGED TO NEW BRAKE ASSY WAS 740-7799 IS: 740-8442, CHANGED FROM SCREW 740-8189, TO 110-3506, CHANGED ADJUSTMENT SCREW FROM 731-0352 TO 740-4588.	14100	KEY	G



DOCUMENT STATUS:

NOTICE OF PROPRIETARY INFORMATION
THIS DOCUMENT SHALL NOT BE REPRODUCED NOR SHALL THE INFORMATION CONTAINED HEREIN BE USED BY OR DISCLOSED TO OTHERS EXCEPT AS EXPRESSLY AUTHORIZED BY CORE INDUSTRIES INC, D.B.A. STAR TRAC.

CLASS OF WORK	UNLESS OTHERWISE SPECIFIED DIMS ARE IN mm. TOLERANCES FOR MEASURE OF LENGTH ARE:							ANGLES = ±2°		
	0.5 to 3	>3 to 6	>6 to 30	>30 to 120	>120 to 400	>400 to 1000	>1000 to 2000	>2000		
FINE	±0.05	±0.05	±0.1	±0.15	±0.2	±0.3	±0.5	----		
MEDIUM	±0.1	±0.1	±0.2	±0.3	±0.5	±0.8	±1.2	±2		
COARSE	±0.2	±0.3	±0.5	±0.8	±1.2	±2	±3	±4		
VERY COARSE	----	±0.5	±1	±1.5	±2.5	±4	±6	±8		

MATERIAL
SEE BOM

FINISH
N/A

VENDOR: **N/A** P/N: **N/A**

THIRD ANGLE PROJECTION		
DRAWN	INITIAL	DATE
CHECKED		
APPROVED		

CORE IND INC., DBA 14410 Myford Road
Irvine CA 92606

STAR TRAC

STAR TRAC PART NO **740-7930** REV **D**

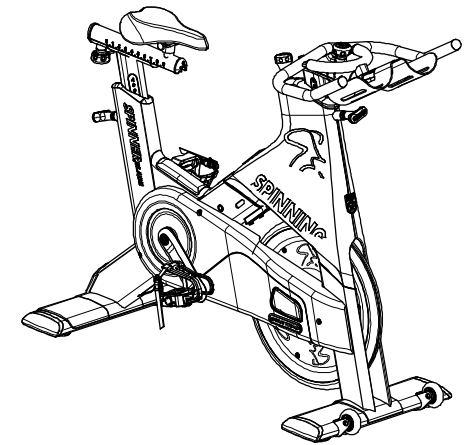
TITLE **ASSY, SPINNER, BLADE**

SCALE: 1:10 | SHEET 1 OF 7 | SHEET SIZE: B

9 8 7 6 5 4 3 2 1

ITEM NO.	PART NUMBER	DESCRIPTION	Default/QTY.
1	050-1955	LABEL, WARNING, COMM, SPINNERS	1
2	050-2115	LABEL, COUNTRY OF ORIGIN	1
3	050-2125	LABEL, SERIAL NO., OEM UNIV	1
ⓓ 4	110-3172	SCREW, ISO10642, M6x16	2
5	731-0373	WASHER,PLAIN,M6	5
6	731-0379	SCREW,M8 X1.25,20mm,SHC,HK	2
7	731-0561	WASHER,M8,1MM THK	6
8	731-0585	WASHER,M4	5
ⓓ 9	740-4588	SCREW, M8 X 1.25, 16MM, BHC, HK, SS	2
10	740-6899	CHAIN, 112 LINKS, TAYA 410H	1
11	740-7124	SPRING, BRAKE KNOB	1
12	740-7167	WASHER, LOCK, SPLIT, M6	2
13	740-7174	NUT, M6X1, HE, SS	2
14	740-7175	SCREW, M6X1.0X25, HHM, HE, SS	2
15	740-7176	SCREW, M6X1.0X50, HHM, HE, SS	1
16	740-7178	NUT, M10X1.5, HE, SS	1
17	740-7183	SCREW,M5X0.8X16,BHC,HE,SS	2
18	740-7187	SCREW, M6X1.25X10, BHC, HE, SS	2
19	740-7189	NUT, M10X1.5, ACORN, SS	1
20	740-7193	LABEL, LOGO, STAR TRAC, SPINNER	2
21	740-7293	WASHER, ID 5.5MM, OD 13MM, SS	2
22	740-7553	BEARING, 6005 SERIES, 25x47x12, 2RS	2
23	740-7554	B/B AXLE	1
24	740-7555	NUT, AXLE, B/B, M24x1.5	1
25	740-7560	CRANK ARM, LEFT	1
26	740-7573	BUSHING, THREADED, BRAKE	1
27	740-7577	ASSY, FLYWHEEL, SPINNER	1
28	740-7586	WELDMENT, CRANK ARM	1
29	740-7598	CUSHION, BRAKE ASSY	1
30	740-7603	FINGERGUARD, SPROCKET, 52T	1
31	740-7604	FINGER GUARD, 16T SPROCKET	1
32	740-7608	PLATE, MOUNT, FINGERGUARD	1
33	740-7613	ASSY, PEDAL, L	1
34	740-7614	ASSY, PEDAL, R	1
35	740-7630	WELDMENT, FRAME, ALUMINUM	1
36	740-7653	WELDMENT, FEET STABILIZER	1

ITEM NO.	PART NUMBER	DESCRIPTION	Default/QTY.
37	740-7656	FEET, LEVELING, SPINNER	4
38	740-7663	WELDMENT, STABILIZER, FRT, BLADE	1
39	740-7667	ASSY, POP PIN	1
40	740-7669	ASSY, KNOB, BRAKE, SPINNER	1
41	740-7670	END CAP, FEET, BLADE	4
42	740-7671	PAD, FEET PROTECTOR	2
43	740-7812	SCREW, M4x0.7, 16mm, PHMS, PH, SS	5
44	740-7916	M5 X 16MM, DOWEL PIN	2
45	740-7931	PAD, STRETCH, RUBBER	1
46	740-7932	SLEEVE, HBAR, POST	1
47	740-7938	COVER, CHAIN, INSIDE	1
48	740-7939	CHAINGUARD, MAIN, BLADE	1
49	740-7941	SLEEVE, SEAT POST	1
50	740-7951	RETAINING RING, EXTERNAL, Ø56mm	1
51	740-7989	CAP, ACCESS, FLYWHEEL ADJ	1
52	740-7999	SCREW, M6X1.0X50, HHM, HE, SS	1
53	740-8002	SPACER, BEARING, BB SPINNER	1
54	740-8006	WHEEL, FRONT FOOT, SPINNER	2
55	740-8007	BOLT, WHEEL, NXT	2
56	740-8011	BLOCK, FLYWHEEL ADJ, SPINNER	2
57	740-8012	BAR, FRAME STIFFENER	1
58	740-8079	BADGE, SPINMAN	1
59	740-8080	LOGO, SPINNER BLADE	2
60	740-8081	LOGO, SPINNING, SILVER	2
61	740-8082	DECAL, SPINMAN, SILVER, LEFT	1
62	740-8083	DECAL, SPINMAN, SILVER, RIGHT	1
63	740-8145	SCREW, M8x1.25, 14mm, BB AXLE	2
64	740-8163	COVER, GUSSET, STEPOVER	1
65	740-8171	SCREW, M6x1.0, 16mm, SHCS, HE, SS	1
66	740-8189	SCREW, M8x1.25, 30mm, HHM, SS	2
67	740-8191	SCREW, M6x1.0, 30mm, SHCS, HE, SS	2
68	740-8250	SCREW, M4.8, 13mm, PHT, PH, SS	8
69	740-8261	ASSY, HANDLEBAR & POST, W/FORE-AFT	1
70	740-8286	ASSY, SEAT W/ POST, BLADE	1
ⓓ 71	740-8442	ASSY, PAD, BRAKE, BLADE	1

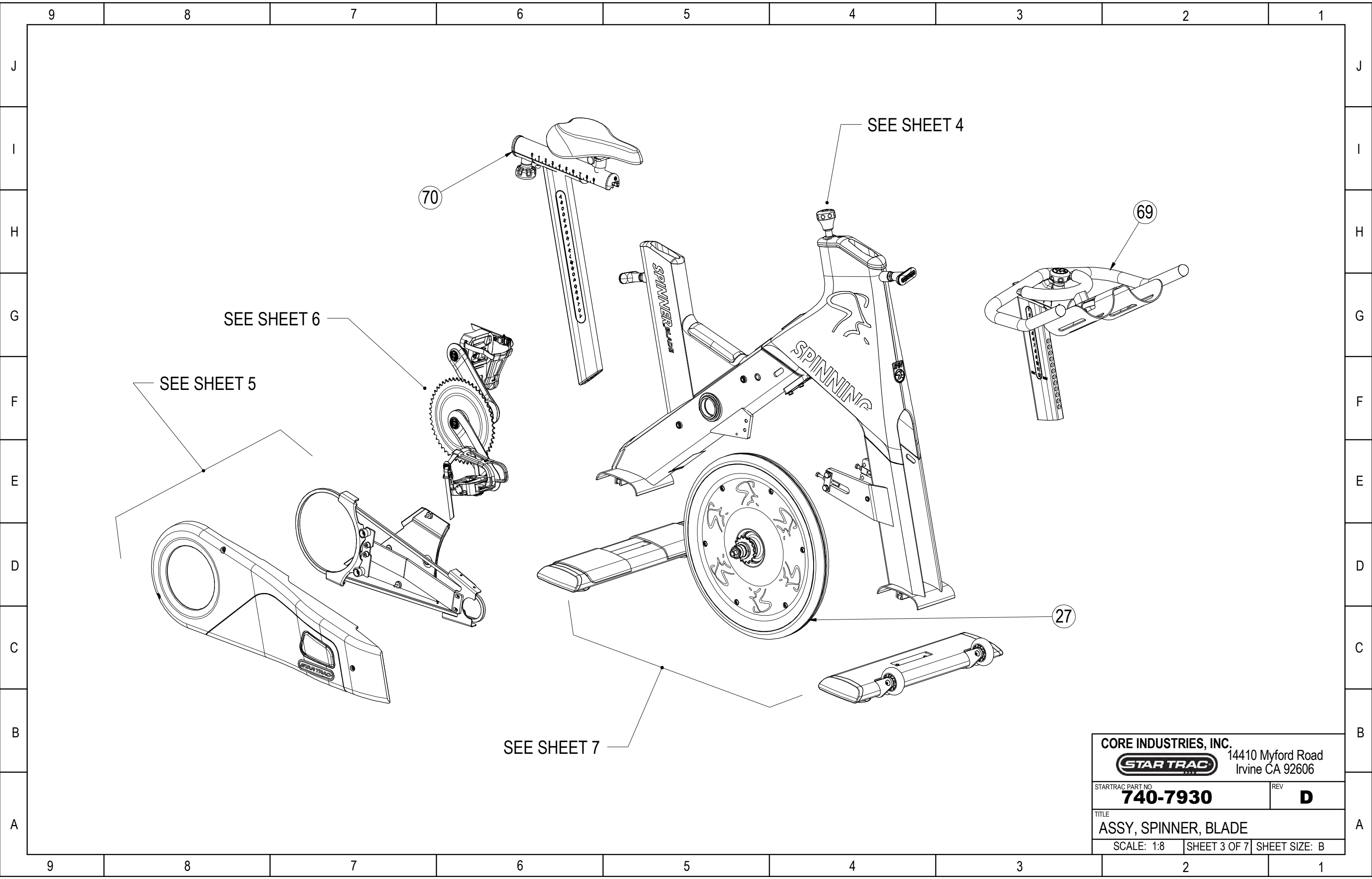


CORE INDUSTRIES, INC.
STAR TRAC 14410 Myford Road
Irvine CA 92606

STARTRAC PART NO. **740-7930** REV **D**

TITLE
ASSY, SPINNER, BLADE

SCALE: 1:20 | SHEET 2 OF 7 | SHEET SIZE: B

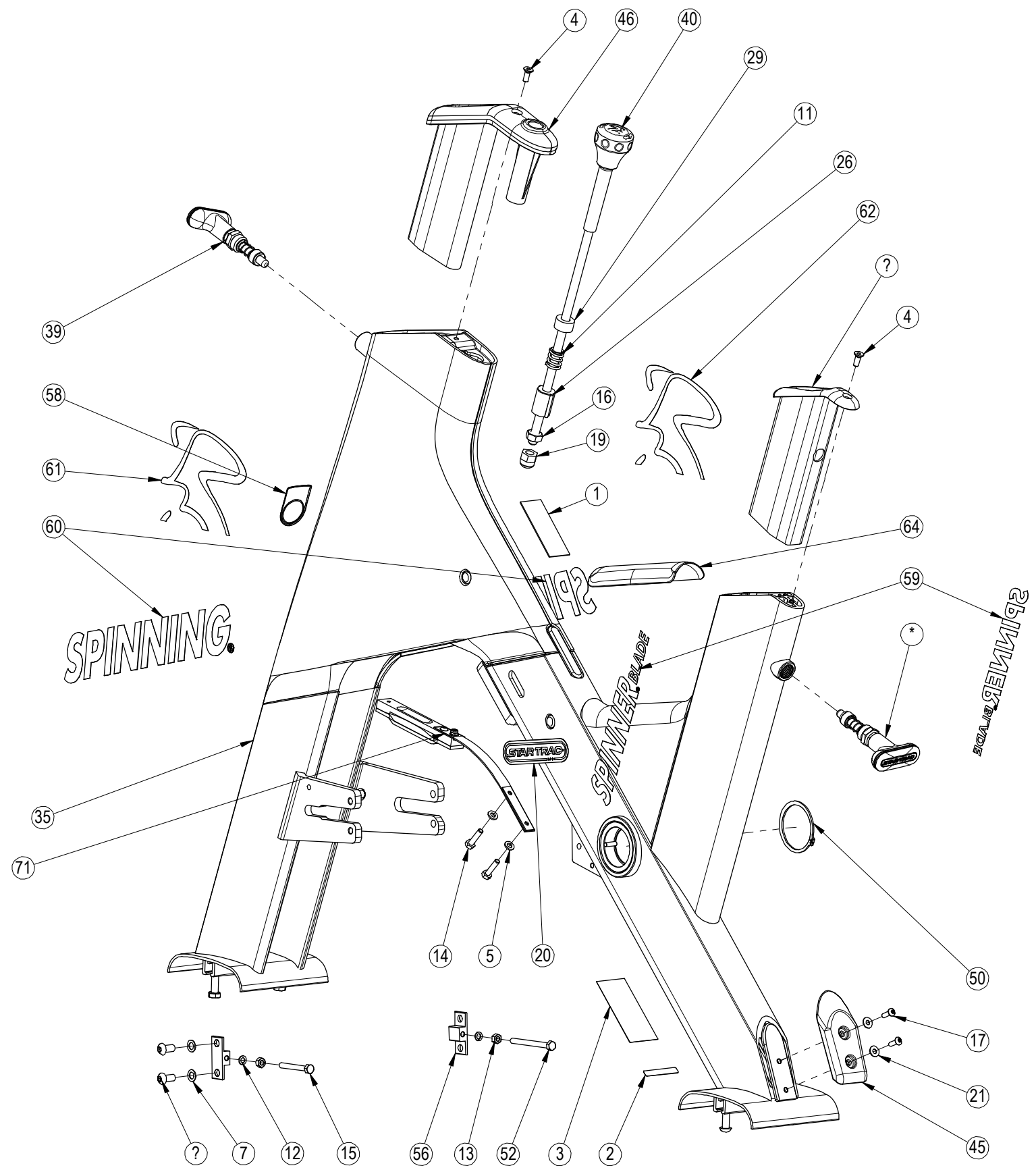


CORE INDUSTRIES, INC.
STAR TRAC 14410 Myford Road
 Irvine CA 92606

STARTRAC PART NO. **740-7930** REV **D**


TITLE
ASSY, SPINNER, BLADE

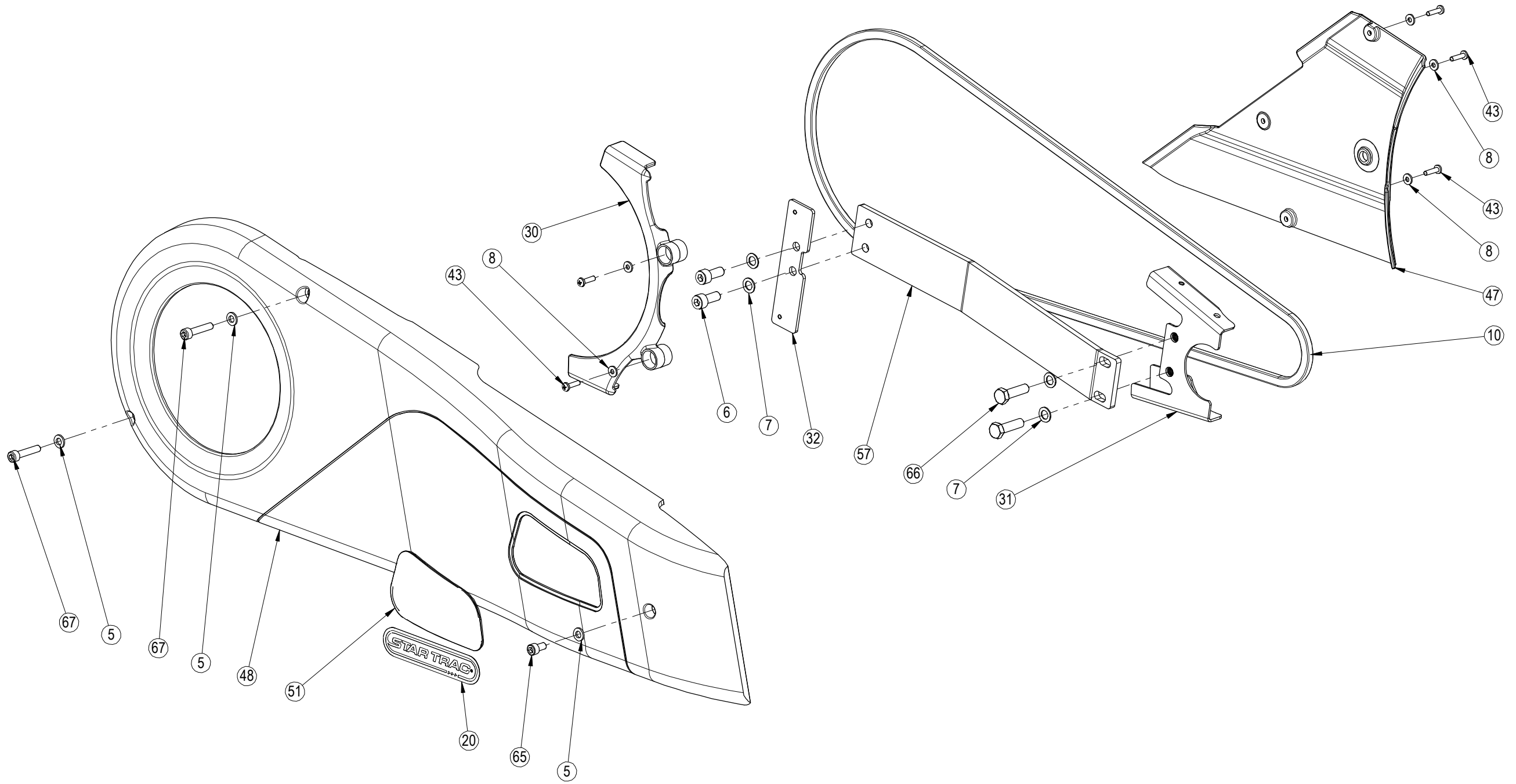
SCALE: 1:8 SHEET 3 OF 7 SHEET SIZE: B




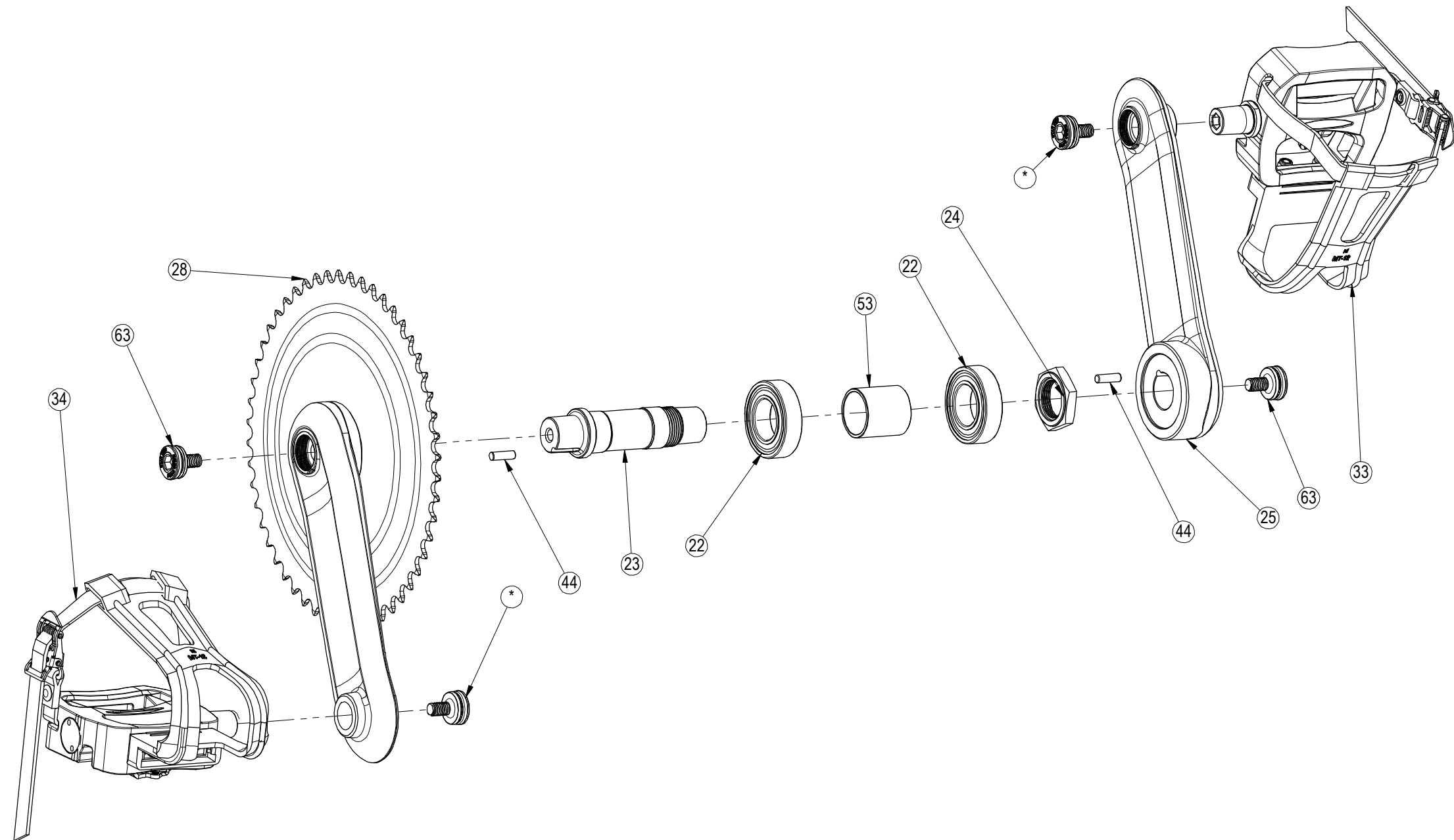
NOTES:

1. ITEMS DENOTED BY * ARE PART OF TOOLKIT 740-8290.

CORE INDUSTRIES, INC. 		14410 Myford Road Irvine CA 92606	
STARTRAC PART NO 740-7930		REV D	
TITLE ASSY, SPINNER, BLADE			
SCALE: 1:6	SHEET 4 OF 7	SHEET SIZE: B	



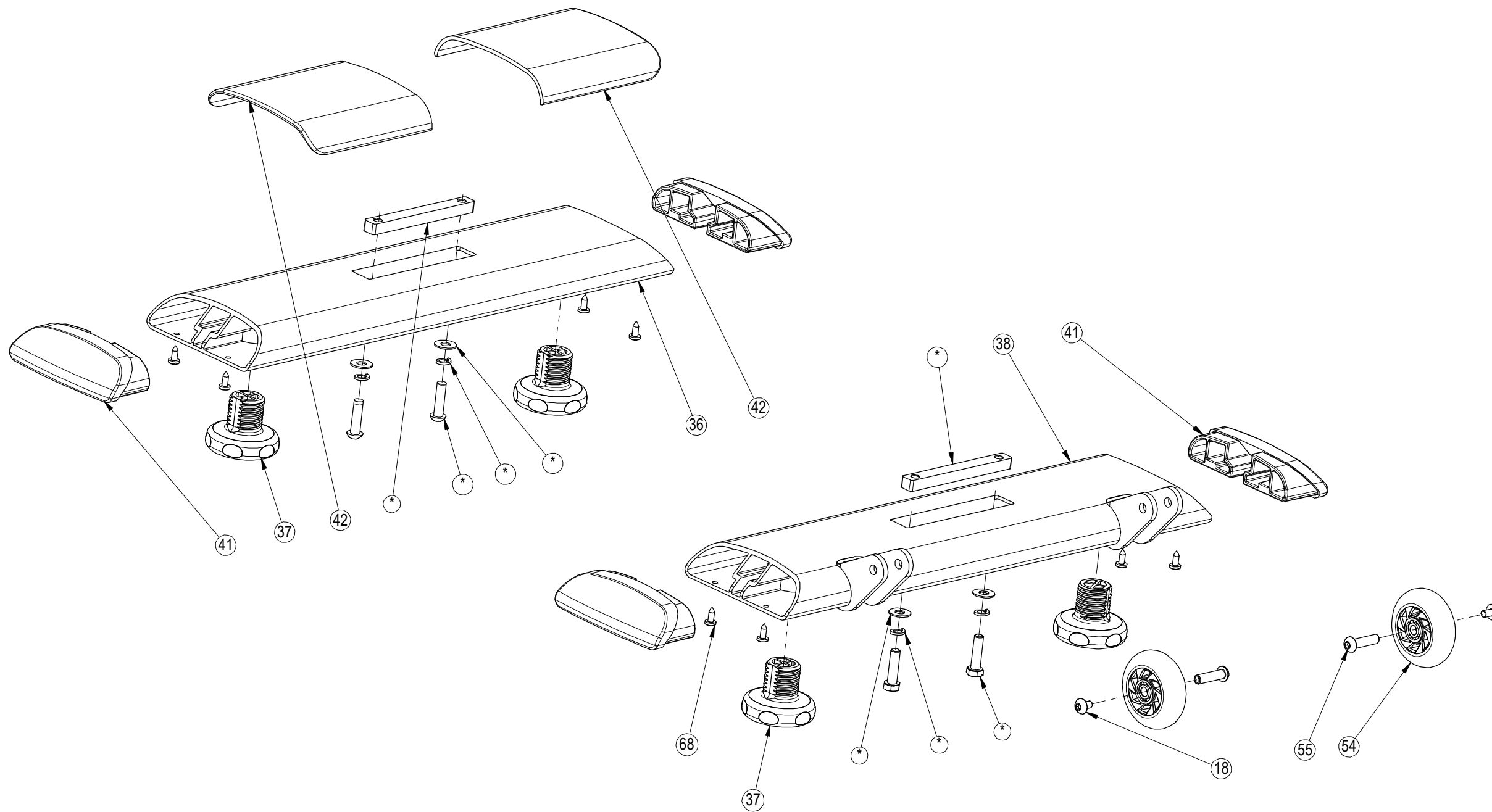
CORE INDUSTRIES, INC.  14410 Myford Road Irvine CA 92606	
STARTRAC PART NO 740-7930	REV D
TITLE ASSY, SPINNER, BLADE	
SCALE: 1:4	SHEET 5 OF 7
SHEET SIZE: B	



NOTES:


1. ITEMS DENOTED BY * ARE PART OF TOOLKIT 740-8290.

CORE INDUSTRIES, INC.  14410 Myford Road Irvine CA 92606	
STARTRAC PART NO 740-7930	REV D
TITLE ASSY, SPINNER, BLADE	
SCALE: 1:3	SHEET 6 OF 7
SHEET SIZE: B	

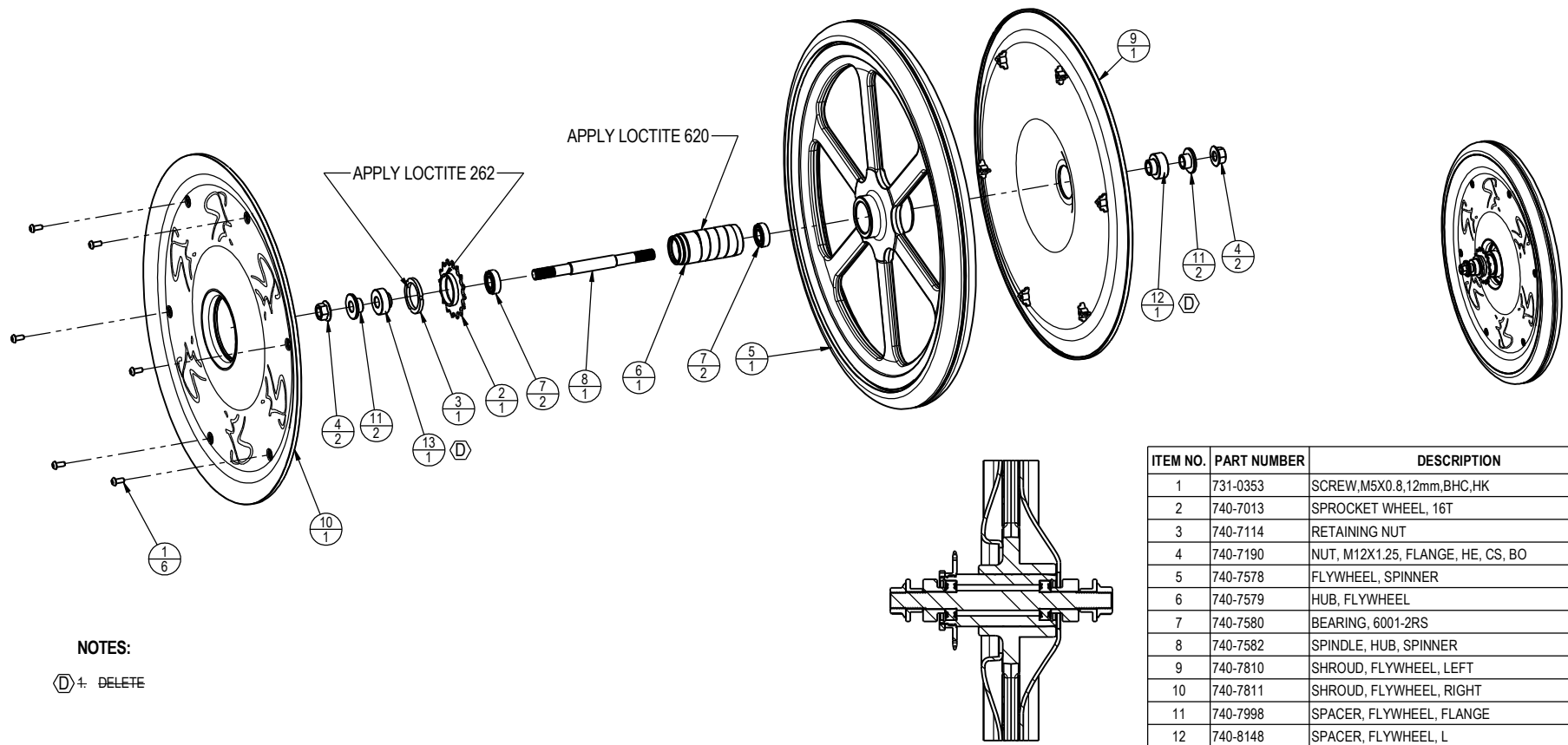


NOTES:

1. ITEMS DENOTED BY * ARE PART OF TOOLKIT 740-8290.

CORE INDUSTRIES, INC. 		14410 Myford Road Irvine CA 92606	
STARTRAC PART NO 740-7930		REV D	
TITLE ASSY, SPINNER, BLADE			
SCALE: 1:4	SHEET 7 OF 7	SHEET SIZE: B	

REVISION HISTORY				
REV	DATE	DESCRIPTION	ECO	BY
A	3/7/2011	PRODUCTION RELEASE	13486	DMM
B	6/28/2011	REMOVED (2X) 740-7585 AND (2X) 740-7581; ADDED 740-8148 AND 740-8149	13192	DMM
C	7/27/2011	ITEM 740-7190 WAS 740-7584	13555	DMM
D	6/20/2012	UPDATE ASSY TO SHOW UPDATED P/N 740-8148 AND 740-7149; REMOVE NOTE 1	13783	SV



ITEM NO.	PART NUMBER	DESCRIPTION	QTY
1	731-0353	SCREW,M5X0.8,12mm,BHC,HK	6
2	740-7013	SPROCKET WHEEL, 16T	1
3	740-7114	RETAINING NUT	1
4	740-7190	NUT, M12X1.25, FLANGE, HE, CS, BO	2
5	740-7578	FLYWHEEL, SPINNER	1
6	740-7579	HUB, FLYWHEEL	1
7	740-7580	BEARING, 6001-2RS	2
8	740-7582	SPINDLE, HUB, SPINNER	1
9	740-7810	SHROUD, FLYWHEEL, LEFT	1
10	740-7811	SHROUD, FLYWHEEL, RIGHT	1
11	740-7998	SPACER, FLYWHEEL, FLANGE	2
12	740-8148	SPACER, FLYWHEEL, L	1
13	740-8149	SPACER, FLYWHEEL, R	1

NOTES:

ⓓ+ DELETE

DOCUMENT STATUS:

NOTICE OF PROPRIETARY INFORMATION
THIS DOCUMENT SHALL NOT BE REPRODUCED NOR SHALL THE INFORMATION CONTAINED HEREIN BE USED BY OR DISCLOSED TO OTHER EXCEPT AS EXPRESSLY AUTHORIZED BY CORE INDUSTRIES, INC., D.B.A. STAR TRAC.

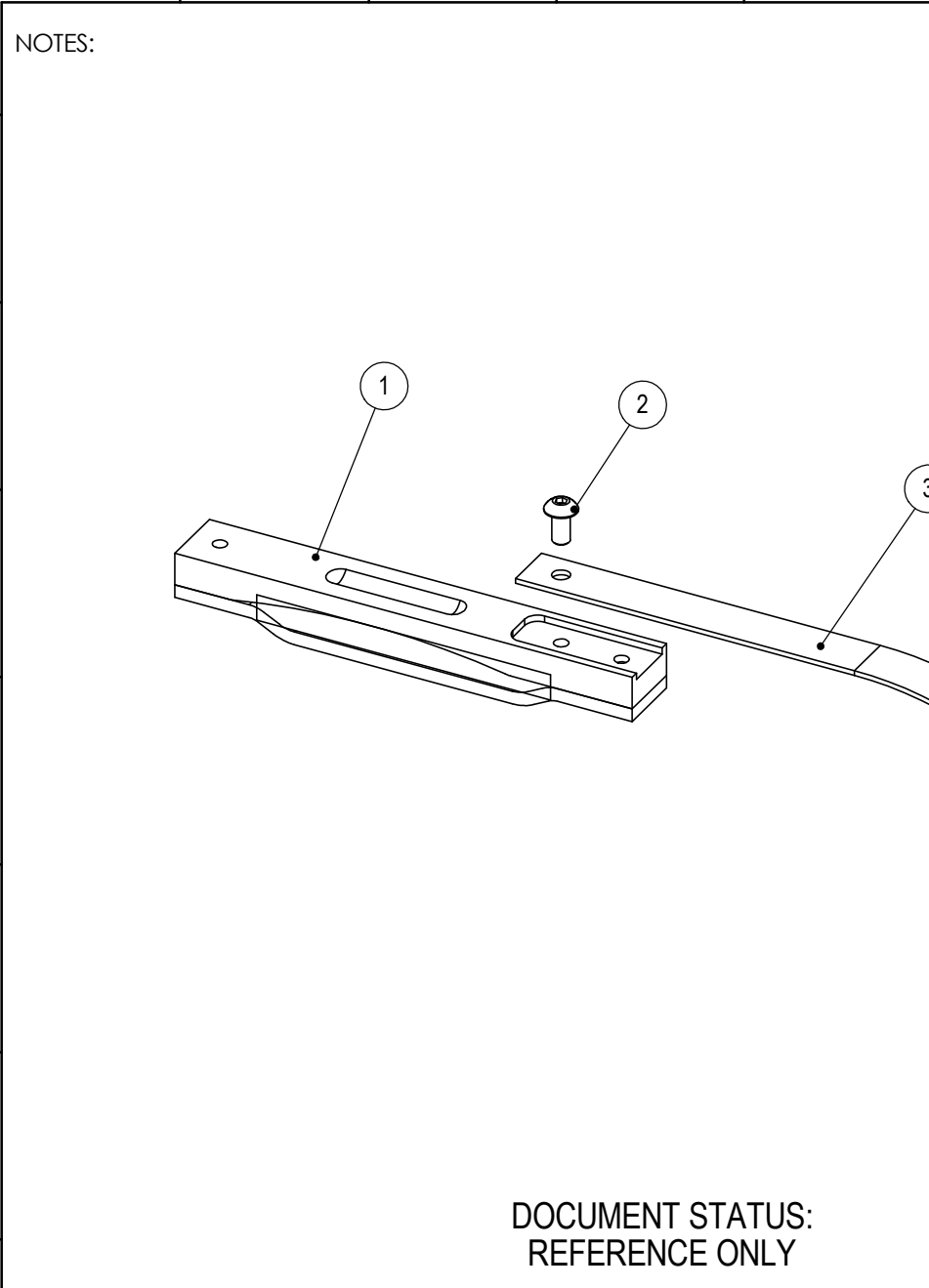
CLASS OF WORK	UNLESS OTHERWISE SPECIFIED DIMS ARE IN mm. TOLERANCES FOR MEASURE OF LENGTH ARE:							ANGLES = ±2°		
	0.5 to 3	>3 to 6	>6 to 30	>30 to 120	>120 to 400	>400 to 1000	>1000 to 2000	>2000		
FINE	±0.05	±0.05	±0.1	±0.15	±0.2	±0.3	±0.5	----		
MEDIUM	±0.1	±0.1	±0.2	±0.3	±0.5	±0.8	±1.2	±2		
COARSE	±0.2	±0.3	±0.5	±0.8	±1.2	±2	±3	±4		
VERY COARSE	----	±0.5	±1	±1.5	±2.5	±4	±6	±8		

MATERIAL SEE BOM	FINISH N/A	VENDOR: N/A	P/N: N/A
----------------------------	----------------------	--------------------	-----------------

THIRD ANGLE PROJECTION		CORE INDUSTRIES, INC. DBA STAR TRAC 14410 Myford Road Irvine CA 92606	
DRAWN	INITIAL	DATE	STARTRAC PART NO 740-7577
CHECKED			REV D
APPROVED			TITLE ASSY, FLYWHEEL, SPINNER
U.O.M.	MM	SCALE: 1:5	SHEET 1 OF 1
			SHEET SIZE: B

10 9 8 7 6 5 4 3 2 1

H
G
F
E
D
C
B
A



REVISION HISTORY				
REV	DATE	DESCRIPTION	ECO	BY
CS001	10/14/11	CUSTOMER SUPPORT REFERENCE RELEASE	N/A	JEB

ITEM NO.	PART NUMBER	DESCRIPTION	QTY.
1	740-6872	KIT, ASSY, PAD, BRAKE, SPINNER, 7090/80/70/60	1
2	740-7182	SCREW, M5X0.8X10, BHC, HE, SS	1
3	740-7798	PLATE, STRIP, BRAKE PAD	1

DOCUMENT STATUS:
REFERENCE ONLY

THIRD ANGLE PROJECTION		
DRAWN	INITIAL JEB	DATE 10/14/11
CHECKED		
APPROVED		
	U.O.M.	INCH

CORE INDUSTRIES, INC. DBA

 14410 Myford Road
 Irvine CA 92606

STARTRAC PART NO
740-7799

TITLE
ASSY, BRAKE PAD

REV
003

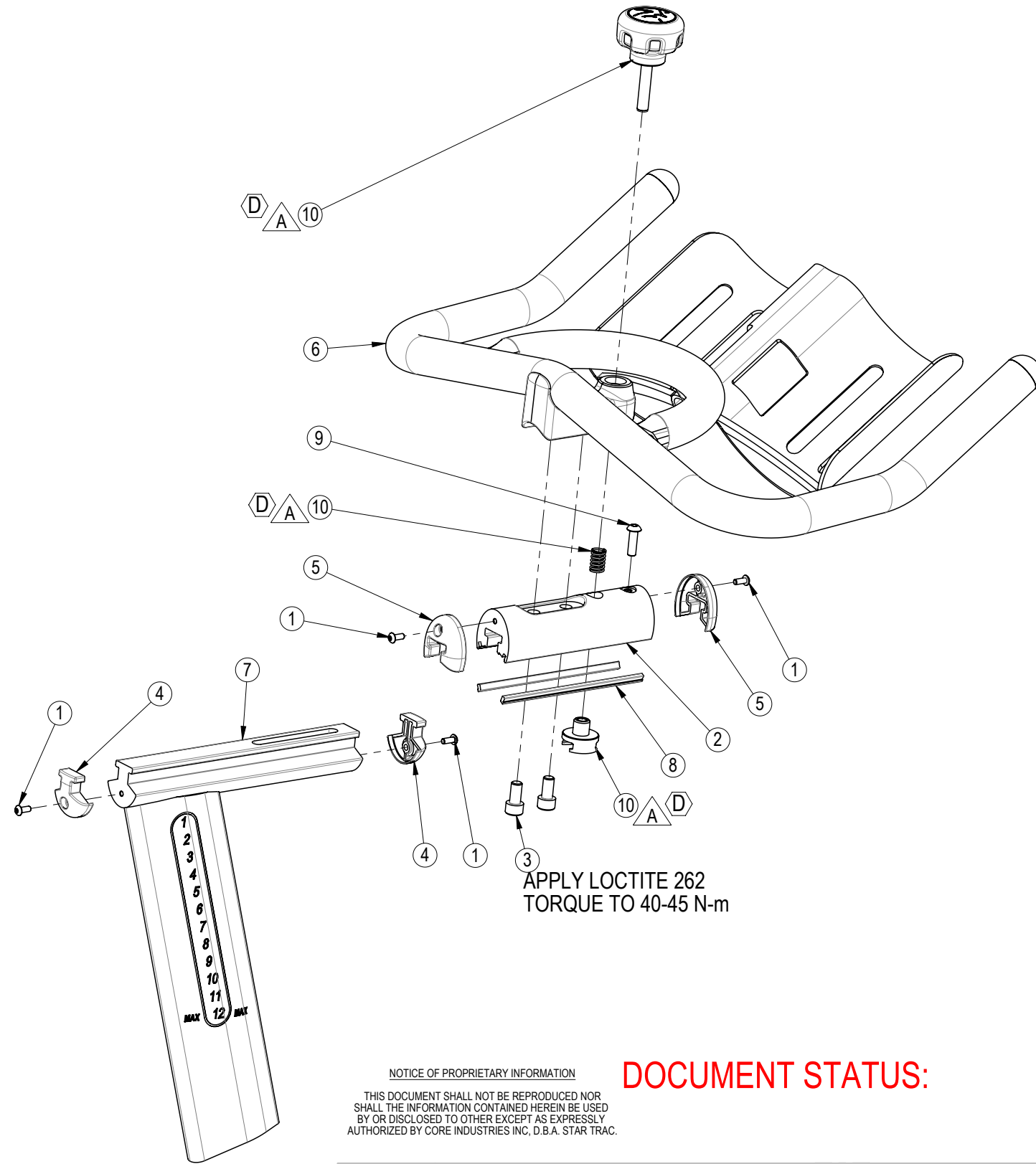
SCALE: 1:2 SHEET 1 OF 1 SHEET SIZE: A

NOTICE OF PROPRIETARY INFORMATION
 THIS DOCUMENT SHALL NOT BE REPRODUCED NOR SHALL THE INFORMATION CONTAINED HEREIN BE USED BY OR DISCLOSED TO OTHER EXCEPT AS EXPRESSLY AUTHORIZED BY CORE INDUSTRIES, INC., D.B.A. STAR TRAC.

NOTICE OF REFERENCE ONLY
 THIS DOCUMENT IS FOR REFERENCE ONLY. ANY AND ALL DIMENSIONS LISTED ON THIS DRAWING ARE FOR REFERENCE ONLY AND DO NOT DEFINE ANY MANUFACTURING SPECIFICATIONS OR DESIGN PARAMETERS FOR ANY COMPONENTS DISPLAYED IN THIS DRAWING. THIS DOCUMENT DOES NOT AUTHORIZE ANY ENGINEERING CHANGE ORDER, CHANGE REQUEST, AND/OR CHANGE NOTICE.

10 9 8 7 6 5 4 3 2 1

H
G
F
E
D
C
B
A



APPLY LOCTITE 262
TORQUE TO 40-45 N-m

NOTICE OF PROPRIETARY INFORMATION
THIS DOCUMENT SHALL NOT BE REPRODUCED NOR SHALL THE INFORMATION CONTAINED HEREIN BE USED BY OR DISCLOSED TO OTHER EXCEPT AS EXPRESSLY AUTHORIZED BY CORE INDUSTRIES INC, D.B.A. STAR TRAC.

DOCUMENT STATUS:

NOTES:

PART OF KIT 740-7626-KT.

CLASS OF WORK	UNLESS OTHERWISE SPECIFIED DIMS ARE IN mm. TOLERANCES FOR MEASURE OF LENGTH ARE:							ANGLES = ±2°		
	0.5 to 3	>3 to 6	>6 to 30	>30 to 120	>120 to 400	>400 to 1000	>1000 to 2000	>2000		
FINE	±0.05	±0.05	±0.1	±0.15	±0.2	±0.3	±0.5	----		
MEDIUM	±0.1	±0.1	±0.2	±0.3	±0.5	±0.8	±1.2	±2		
COARSE	X ±0.2	±0.3	±0.5	±0.8	±1.2	±2	±3	±4		
VERY COARSE	----	±0.5	±1	±1.5	±2.5	±4	±6	±8		

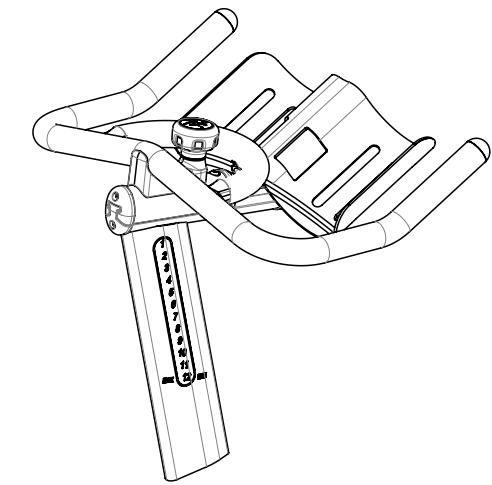
MATERIAL
SEE BOM

FINISH
N/A

VENDOR: N/A

P/N: N/A

REVISION HISTORY				
REV	DATE	DESCRIPTION	ECO	BY
A	3/7/2011	PRODUCTION RELEASE	13486	DMM
B	7/28/2011	REMOVED 740-8003 AND 740-8004, REPLACED WITH 740-7651 AND 740-7652; 740-8177 WAS 740-8005; 740-7591 MODIFIED FOR LARGER SCREW; ADDED 740-8076	13555	DMM
C	11/7/2011	CHANGE FROM "SCREW, M8 X 20mm, BHS, HE, SS" TO "SCREW, M6 X1x20L, BH, HE, AS, BO"	13608	SD
D	3/23/2012	ADDED KIT 740-7626-KT	13720	DMM



ITEM NO.	PART NUMBER	DESCRIPTION	QTY
1	740-7181	SCREW, M4X0.7X10, BHC, HE, SS	4
2	740-7591	SLIDER, HANDLEBAR, TOP	1
3	740-7620	SCREW, M8X1.25, 20mm, SHCS	2
4	740-7651	END CAP, SLIDER, MALE	2
5	740-7652	END CAP, SLIDER, FEMALE	2
6	740-7673	WELDMENT, HANDLEBAR, PVC DIPPED	1
7	740-7678	WELDMENT, HBAR POST	1
8	740-8076	INSERT, SLIDER, HBAR AND SEAT	2
9	740-8177	SCREW, M6X1x20L, BH, HE, AS,BO	1
10	740-7626-KT	KIT, HBAR KNOB, F/A ADJUST, SPINNER	1

THIRD ANGLE PROJECTION



CORE IND INC., DBA 14410 Myford Road
Irvine CA 92606

DRAWN	INITIAL DMM	DATE 03/07/2011
CHECKED		
APPROVED		

STAR TRAC PART NO 740-7589	REV D
TITLE ASSY, HANDLEBAR, W/ FORE-AFT	
U.O.M. MM	SCALE: 1:10 SHEET 1 OF 1 SHEET SIZE: B

10 9 8 7 6 5 4 3 2 1

H NOTES:

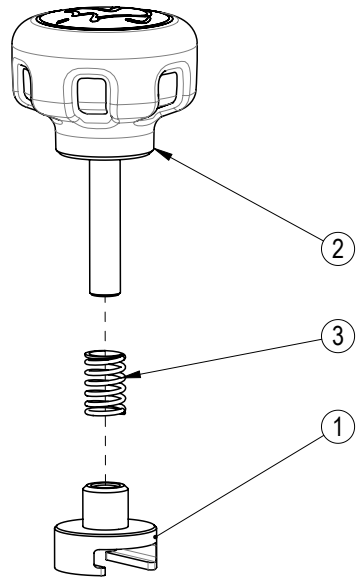
REVISION HISTORY				
REV	DATE	DESCRIPTION	ECO	BY
A	3/23/2012	PRODUCTION RELEASE	13270	DMM

G

F

E

D



C

B

A

CLASS OF WORK	FINE	MEDIUM	COARSE	VERY COARSE
		±0.05	±0.1	±0.2
		X		

DOCUMENT STATUS:

NOTICE OF PROPRIETARY INFORMATION
 THIS DOCUMENT SHALL NOT BE REPRODUCED NOR SHALL THE INFORMATION CONTAINED HEREIN BE USED BY OR DISCLOSED TO OTHER EXCEPT AS EXPRESSLY AUTHORIZED BY CORE INDUSTRIES INC, D.B.A. STAR TRAC.

MATERIAL
SEE BOM

FINISH
N/A

VENDOR: N/A P/N: N/A

ITEM NO.	PART NUMBER	DESCRIPTION	QTY.
1	740-7626	HOLDING NUT, SEAT SLIDER, NXT/E-SPINNER	1
2	740-8263	KNOB, ADJUST, W/ BRASS INSERT	1
3	740-8330	SPRING, FORE/AFT ADJUST, SPINNER	1

THIRD ANGLE PROJECTION

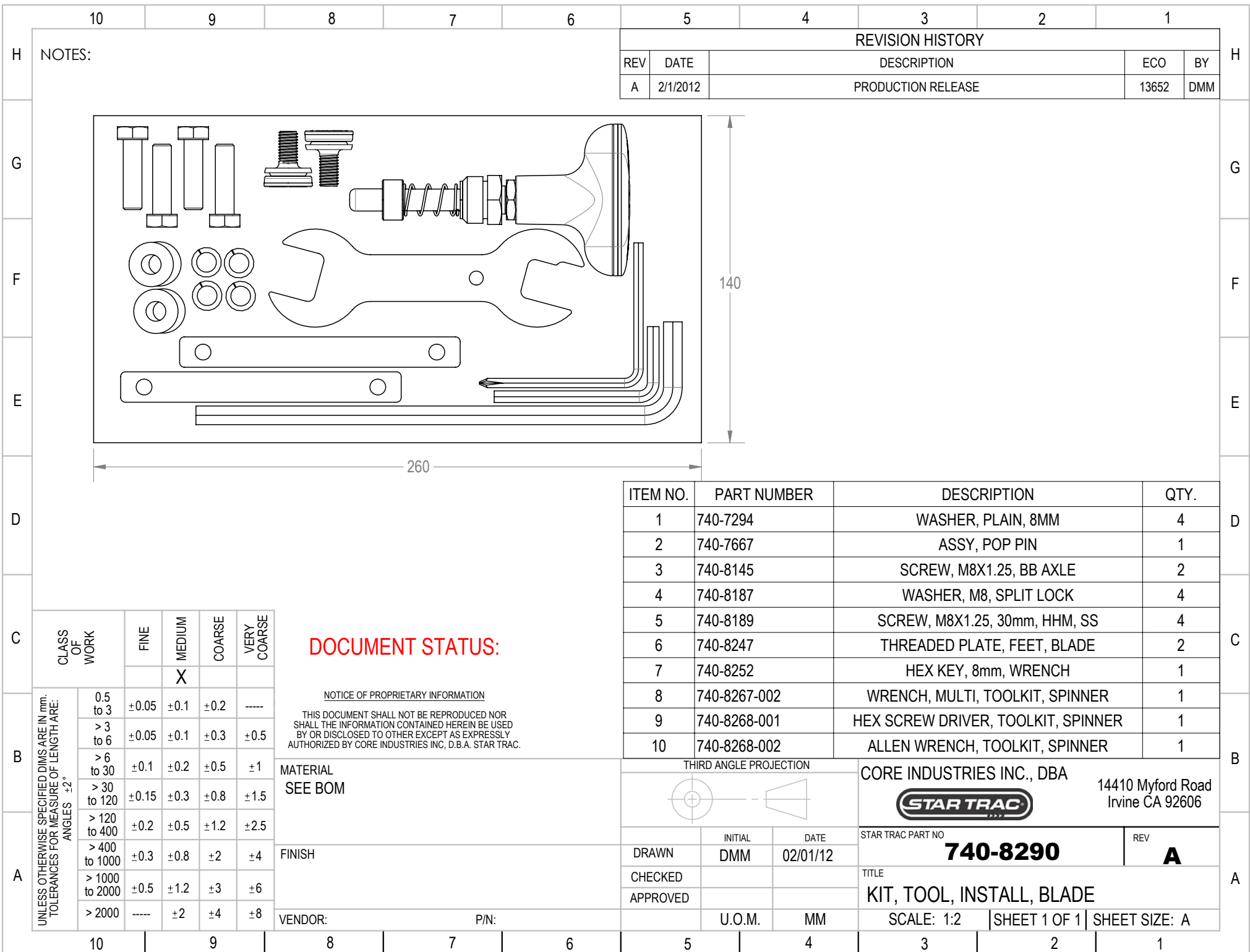


CORE INDUSTRIES INC., DBA
STAR TRAC
 14410 Myford Road
 Irvine CA 92606

DRAWN	INITIAL DMM	DATE 03/22/12
CHECKED		
APPROVED		
	U.O.M.	MM

STAR TRAC PART NO	740-7626-KT	REV A
TITLE KIT, HBAR KNOB, F/A ADJUST, SPINNER		
SCALE: 1:2	SHEET 1 OF 1	SHEET SIZE: A

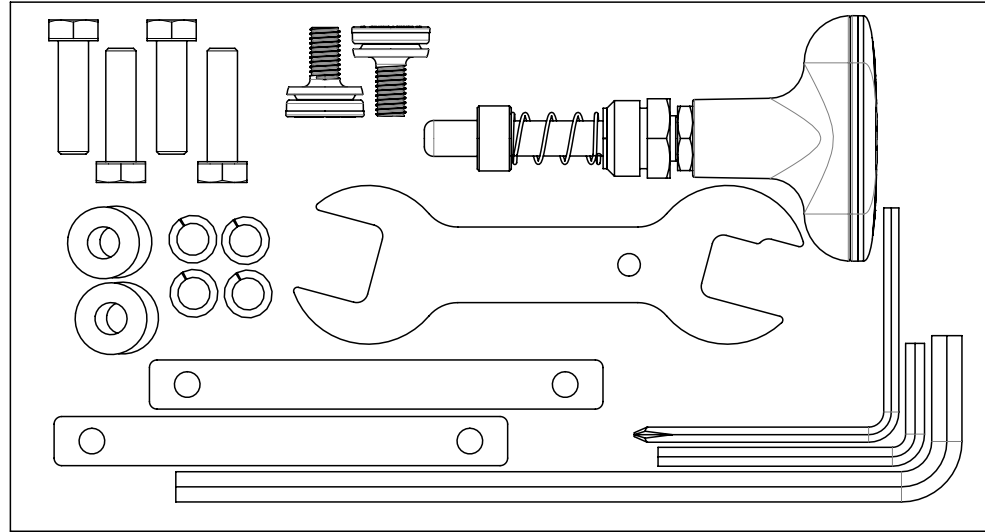
10 9 8 7 6 5 4 3 2 1



NOTES:

REVISION HISTORY

REV	DATE	DESCRIPTION	ECO	BY
A	2/1/2012	PRODUCTION RELEASE	13652	DMM



260

140

ITEM NO.	PART NUMBER	DESCRIPTION	QTY.
1	740-7294	WASHER, PLAIN, 8MM	4
2	740-7667	ASSY, POP PIN	1
3	740-8145	SCREW, M8X1.25, BB AXLE	2
4	740-8187	WASHER, M8, SPLIT LOCK	4
5	740-8189	SCREW, M8X1.25, 30mm, HHM, SS	4
6	740-8247	THREADED PLATE, FEET, BLADE	2
7	740-8252	HEX KEY, 8mm, WRENCH	1
8	740-8267-002	WRENCH, MULTI, TOOLKIT, SPINNER	1
9	740-8268-001	HEX SCREW DRIVER, TOOLKIT, SPINNER	1
10	740-8268-002	ALLEN WRENCH, TOOLKIT, SPINNER	1

DOCUMENT STATUS:

NOTICE OF PROPRIETARY INFORMATION

THIS DOCUMENT SHALL NOT BE REPRODUCED NOR SHALL THE INFORMATION CONTAINED HEREIN BE USED BY OR DISCLOSED TO OTHER EXCEPT AS EXPRESSLY AUTHORIZED BY CORE INDUSTRIES INC, D.B.A. STAR TRAC.

MATERIAL
SEE BOM

FINISH

VENDOR:

P/N:

THIRD ANGLE PROJECTION



CORE INDUSTRIES INC., DBA

14410 Myford Road
Irvine CA 92606



STAR TRAC PART NO

740-8290

REV

A

TITLE

KIT, TOOL, INSTALL, BLADE

SCALE: 1:2

SHEET 1 OF 1

SHEET SIZE: A

CLASS OF WORK	FINE	MEDIUM	COARSE	VERY COARSE
			X	

UNLESS OTHERWISE SPECIFIED DIMS ARE IN mm. TOLERANCES FOR MEASURE OF LENGTH ARE: ANGLES ±2°	0.5 to 3	±0.05	±0.1	±0.2	----
	> 3 to 6	±0.05	±0.1	±0.3	±0.5
> 6 to 30	±0.1	±0.2	±0.5	±1	
> 30 to 120	±0.15	±0.3	±0.8	±1.5	
> 120 to 400	±0.2	±0.5	±1.2	±2.5	
> 400 to 1000	±0.3	±0.8	±2	±4	
> 1000 to 2000	±0.5	±1.2	±3	±6	
> 2000	----	±2	±4	±8	