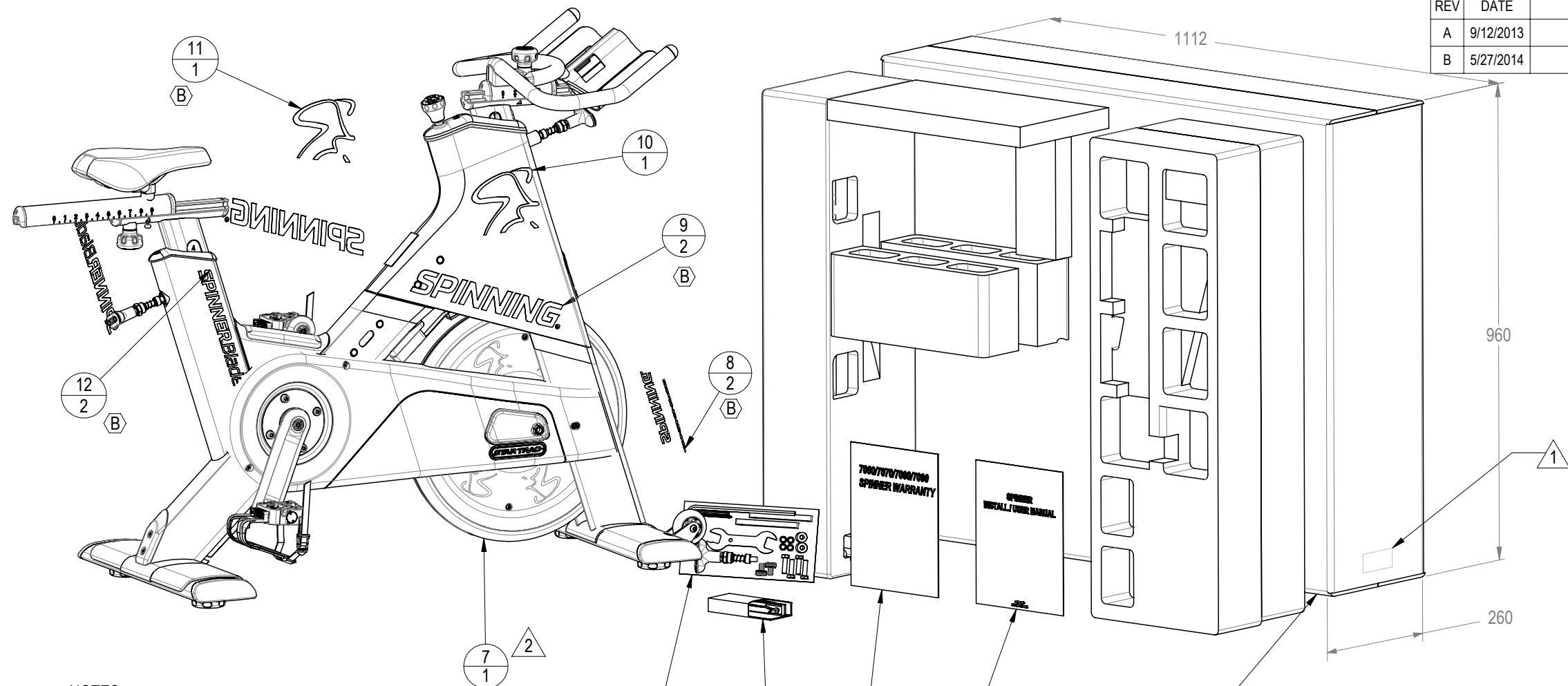


REVISION HISTORY				
REV	DATE	DESCRIPTION	ECO	BY
A	9/12/2013	PRODUCTION RELEASE	14387	OT
B	5/27/2014	UPDATE 2014 GRAPHICS	14683	OT



- NOTES:
- 1 LABEL INFORMATION (4 LABELS):
 - a) MODEL: SPINNER BLADE BELT
 - b) SKU: 9-7240-MINTPO
 - c) SERIAL NUMBER: PER DOCUMENT 050-2125.
 - d) COUNTRY OF ORIGIN TO BE PRINTED ON A PEEL LABEL.
 - 2 SPINNER TO BE BAGGED ON A PLASTIC BAG TO PREVENT CONTACT WITH FOAM INSERTS.
 - 3 DOCUMENTS TO BE PLACED IN PLASTIC BAG 050-2080.
 - 4. SPINNER TO BE PRE-PACKED WITH DESICCANT TO PREVENT HUMIDITY.
 - 5. SHIPPING WEIGHT 145 lbs
 - 6. COLOR DESIGNATOR PER -XX AS SPECIFIED IN SOP 620-8222

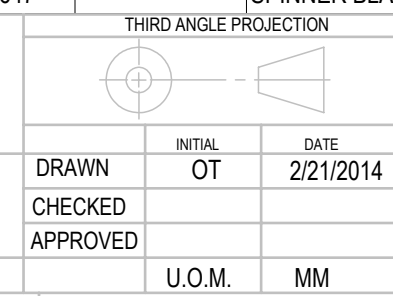
ITEM NO.	PART NUMBER	-XX	DESCRIPTION	QTY.
1	620-7831		CARD,REGIST.,WARRANTY, SPINNER, 7060/7070/7080/7090	1
2	620-8263		MANUAL, INSTALL/OWNERS, BLADE BB	1
3	740-7316		CARTON, SPINNER NXT	1
4	740-8182		STYROFOAM, PACKING, E-SP	1
5	740-8290		KIT, TOOL, INSTALL, BLADE	1
6	740-8363		KIT, SPARE, DBL MOUNT, BRAKE PAD	1
7	740-8567-XX	-53	ASSY, BLADE BELT BIKE	1
B	8		SM SPINNING, GREY, 2014	2
B	9		LG SPINNING, GREY, 2014	2
	10		DECAL, SPINMAN, SILVER, RIGHT	1
	11		DECAL, SPINMAN, SILVER. LEFT	1
B	12		SPINNER BLADE DECAL, 2014	2

DOCUMENT STATUS:

NOTICE OF PROPRIETARY INFORMATION
 THIS DOCUMENT SHALL NOT BE REPRODUCED NOR SHALL THE INFORMATION CONTAINED HEREIN BE USED BY OR DISCLOSED TO OTHER EXCEPT AS EXPRESSLY AUTHORIZED BY CORE HEALTH & FITNESS, LLC.

CLASS OF WORK	UNLESS OTHERWISE SPECIFIED DIMS ARE IN mm. TOLERANCES FOR MEASURE OF LENGTH ARE:							ANGLES = ±2°
	0.5 to 3	>3 to 6	>6 to 30	>30 to 120	>120 to 400	>400 to 1000	>1000 to 2000	
FINE	±0.05	±0.05	±0.1	±0.15	±0.2	±0.3	±0.5	----
MEDIUM X	±0.1	±0.1	±0.2	±0.3	±0.5	±0.8	±1.2	±2
COARSE	±0.2	±0.3	±0.5	±0.8	±1.2	±2	±3	±4
VERY COARSE	----	±0.5	±1	±1.5	±2.5	±4	±6	±8

MATERIAL SEE BOM
 FINISH SEE BOM
 VENDOR:
 P/N:



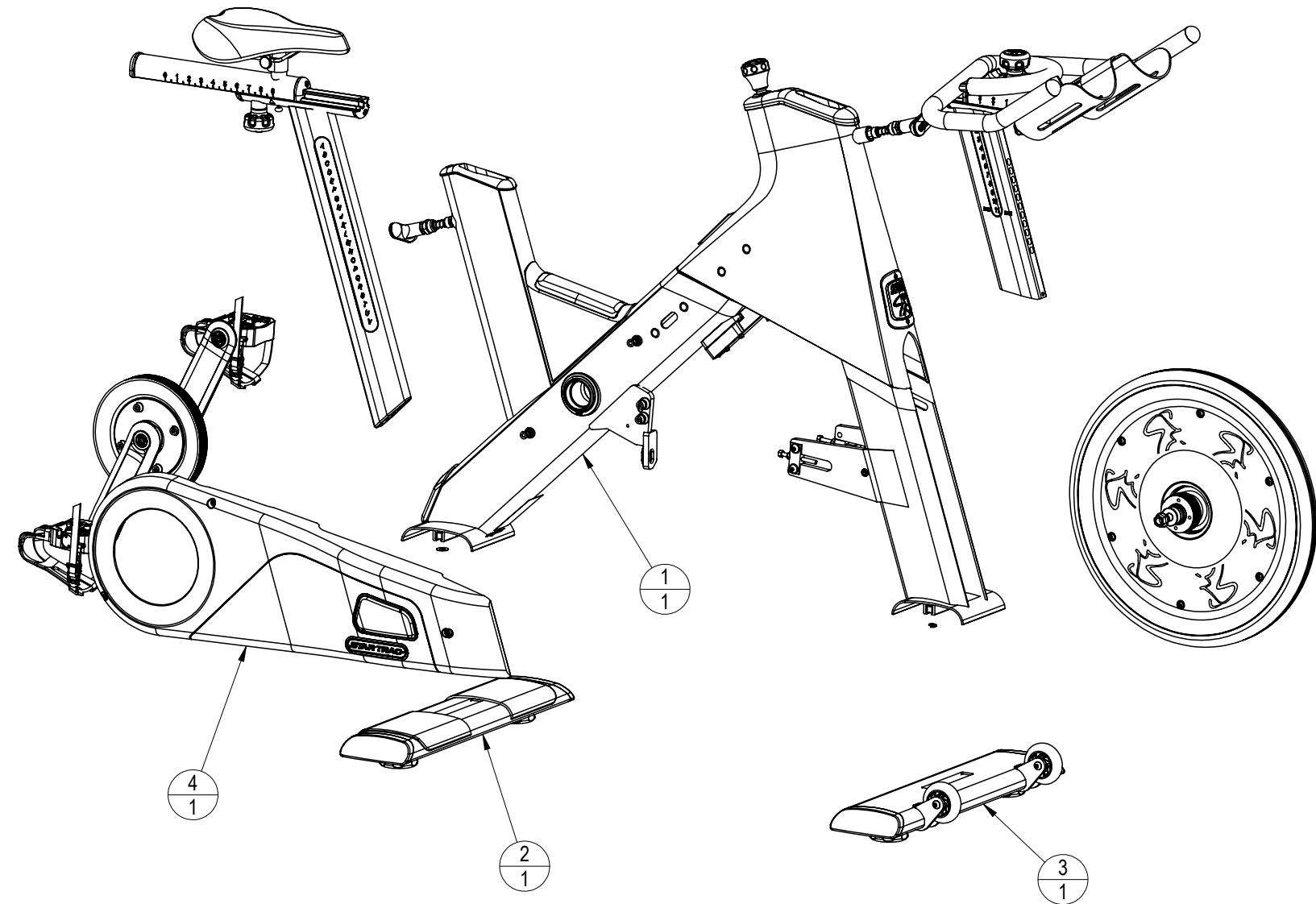
CORE HEALTH & FITNESS, LLC
 4400 NE 77th Ave., Suite 300
 Vancouver, WA 98662

CORE PART NO: **9-7240-MINTPO** REV: **B**

TITLE: **SPINNER BLADE BELT**

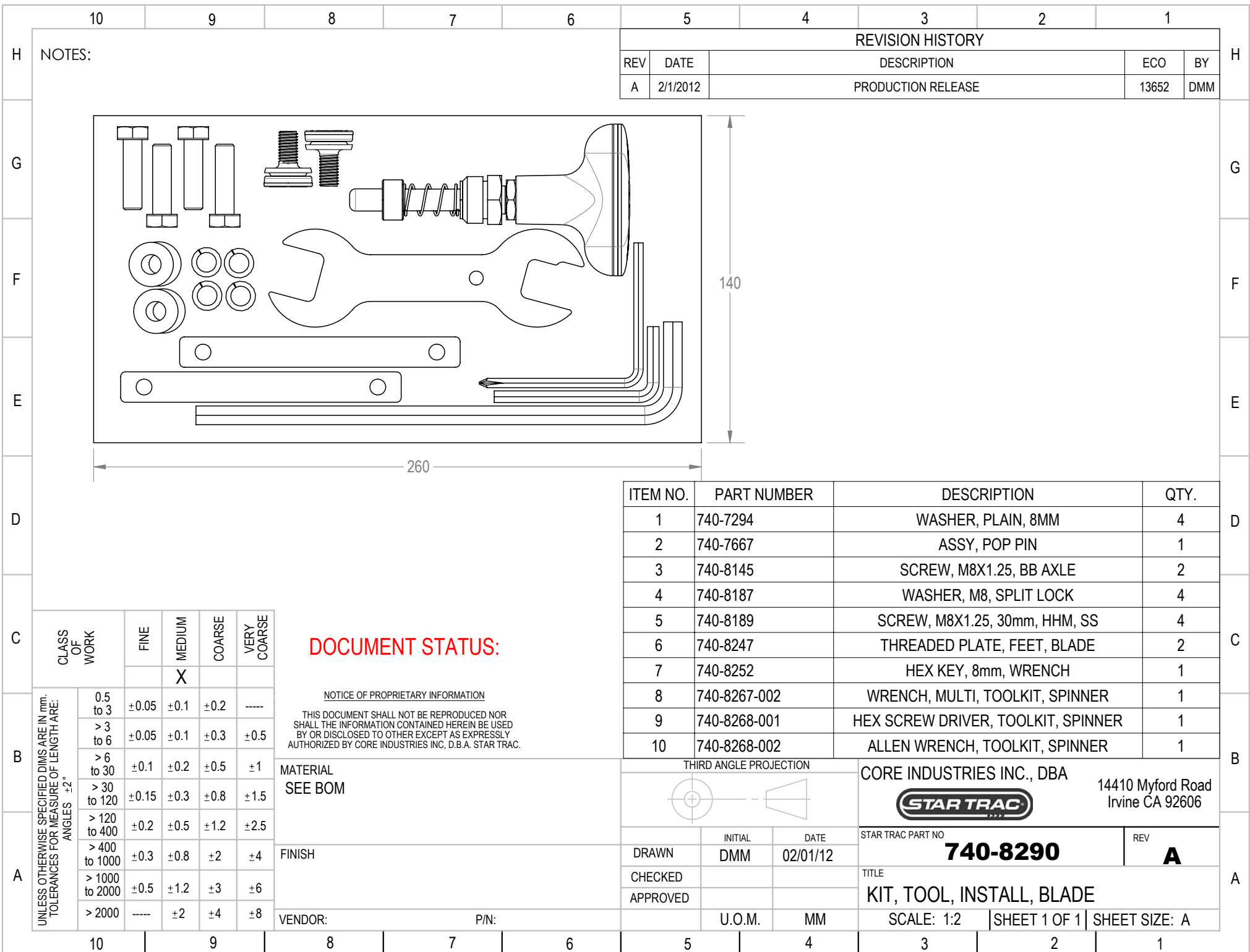
SCALE: 1:10 | SHEET 1 OF 2 | SHEET SIZE: B

DRAWING IS FOR COLOR
REFERENCE ONLY, REFER
TO SHEET 1 FOR COMPLETE
BOM FOR MISC PARTS



* -XX FOR COLOR DESIGNATOR

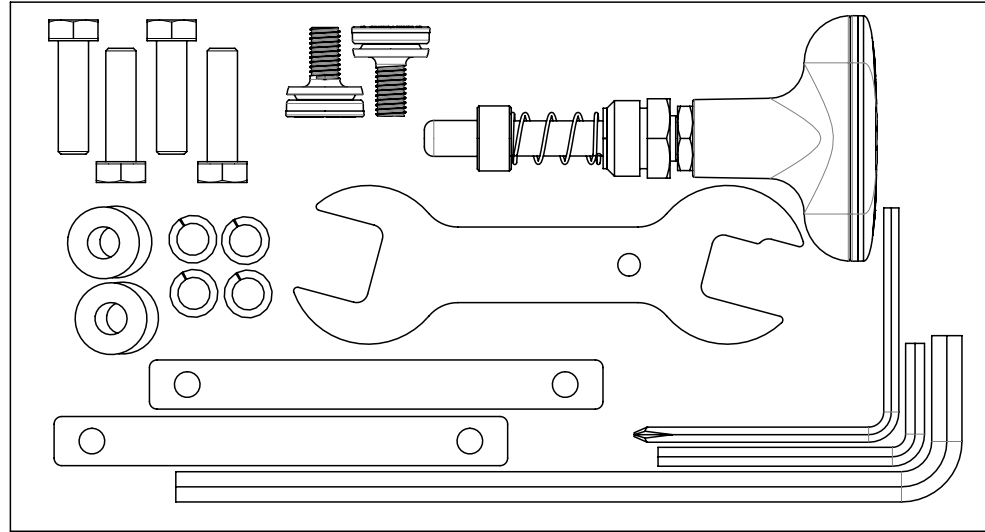
ITEM NO.	PART NUMBER	-XX *	DESCRIPTION	QTY.	CORE HEALTH & FITNESS, LLC 4400 NE 77th Ave., Suite 300 Vancouver, WA 98662	
1	740-8565-XX	-53	WELDMENT, FRAME, ION BIKE	1	CORE PART NO 9-7240-MINTPO	REV B
2	740-7653-XX	-53	WELDMENT, FEET STABILIZER	1	TITLE SPINNER BLADE BELT	
3	740-7663-XX	-53	WELDMENT, STABILIZER, FRT, BLADE	1	SCALE: 1:10 SHEET 2 OF 2 SHEET SIZE: B	
4	740-8664-XX	-20	CHAINGUARD, OUTER, ION BB	1		



NOTES:

REVISION HISTORY

REV	DATE	DESCRIPTION	ECO	BY
A	2/1/2012	PRODUCTION RELEASE	13652	DMM



260

140

ITEM NO.	PART NUMBER	DESCRIPTION	QTY.
1	740-7294	WASHER, PLAIN, 8MM	4
2	740-7667	ASSY, POP PIN	1
3	740-8145	SCREW, M8X1.25, BB AXLE	2
4	740-8187	WASHER, M8, SPLIT LOCK	4
5	740-8189	SCREW, M8X1.25, 30mm, HHM, SS	4
6	740-8247	THREADED PLATE, FEET, BLADE	2
7	740-8252	HEX KEY, 8mm, WRENCH	1
8	740-8267-002	WRENCH, MULTI, TOOLKIT, SPINNER	1
9	740-8268-001	HEX SCREW DRIVER, TOOLKIT, SPINNER	1
10	740-8268-002	ALLEN WRENCH, TOOLKIT, SPINNER	1

DOCUMENT STATUS:

NOTICE OF PROPRIETARY INFORMATION

THIS DOCUMENT SHALL NOT BE REPRODUCED NOR SHALL THE INFORMATION CONTAINED HEREIN BE USED BY OR DISCLOSED TO OTHER EXCEPT AS EXPRESSLY AUTHORIZED BY CORE INDUSTRIES INC, D.B.A. STAR TRAC.

MATERIAL
SEE BOM

FINISH

VENDOR:

P/N:

THIRD ANGLE PROJECTION



CORE INDUSTRIES INC., DBA

14410 Myford Road
Irvine CA 92606



STAR TRAC PART NO

740-8290

REV

A

TITLE

KIT, TOOL, INSTALL, BLADE

SCALE: 1:2

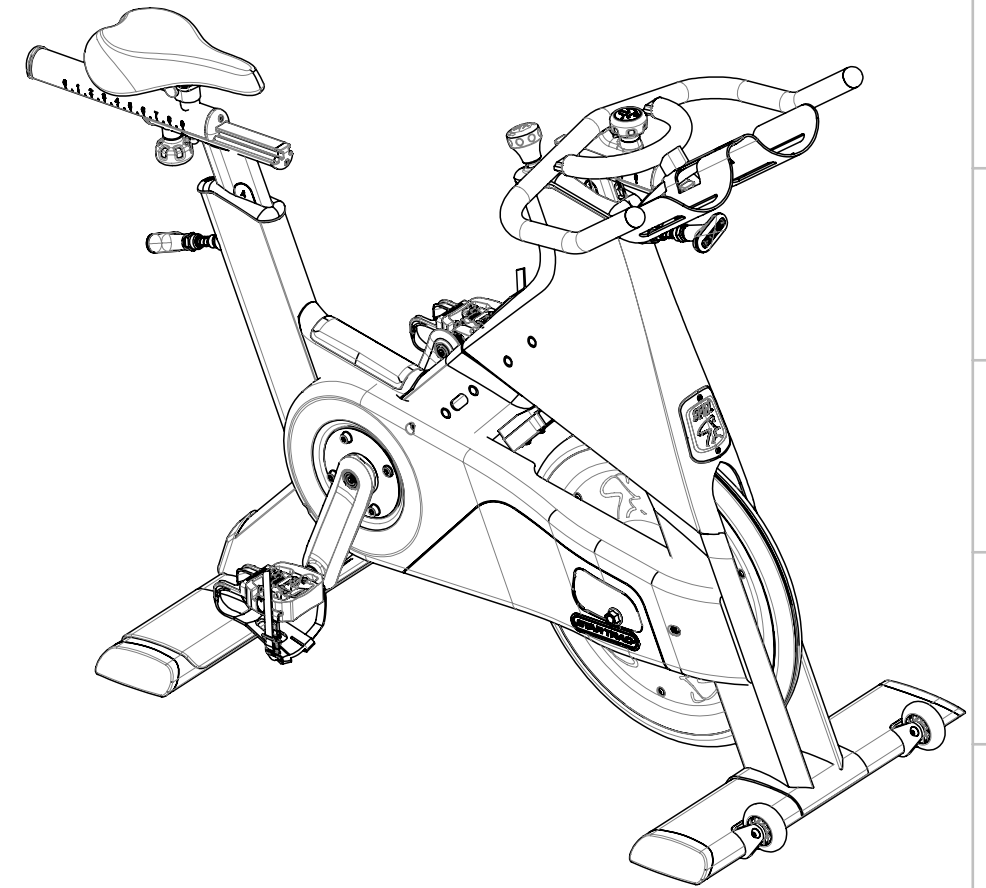
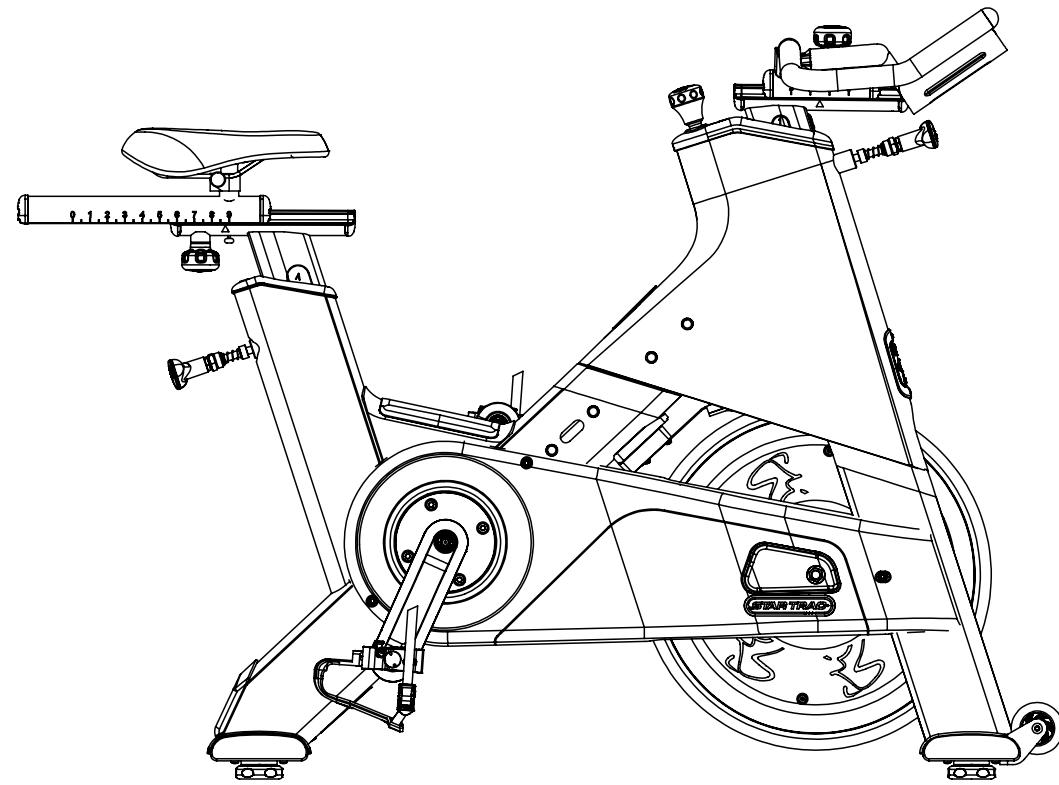
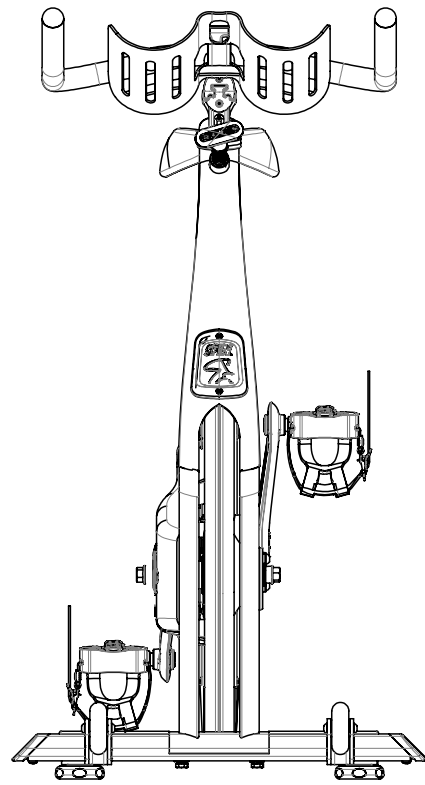
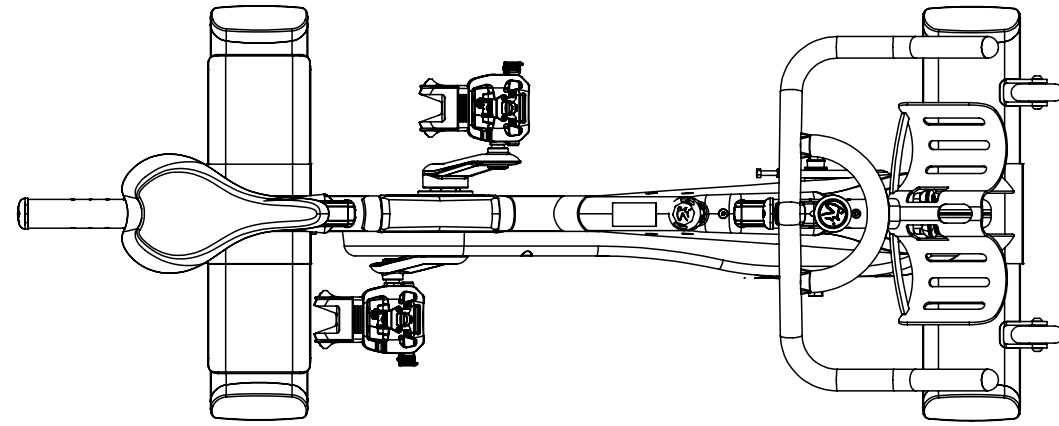
SHEET 1 OF 1

SHEET SIZE: A

CLASS OF WORK	FINE	MEDIUM	COARSE	VERY COARSE
			X	

UNLESS OTHERWISE SPECIFIED DIMS ARE IN mm. TOLERANCES FOR MEASURE OF LENGTH ARE: ANGLES ±2°	0.5 to 3	±0.05	±0.1	±0.2	----
	> 3 to 6	±0.05	±0.1	±0.3	±0.5
> 6 to 30	±0.1	±0.2	±0.5	±1	
> 30 to 120	±0.15	±0.3	±0.8	±1.5	
> 120 to 400	±0.2	±0.5	±1.2	±2.5	
> 400 to 1000	±0.3	±0.8	±2	±4	
> 1000 to 2000	±0.5	±1.2	±3	±6	
> 2000	----	±2	±4	±8	

REVISION HISTORY				
REV	DATE	DESCRIPTION	ECO	BY
A	9/13/2013	PRODUCTION RELEASE	14387	OT



DOCUMENT STATUS:

NOTICE OF PROPRIETARY INFORMATION
THIS DOCUMENT SHALL NOT BE REPRODUCED NOR SHALL THE INFORMATION CONTAINED HEREIN BE USED BY OR DISCLOSED TO OTHER EXCEPT AS EXPRESSLY AUTHORIZED BY CORE HEALTH & FITNESS, LLC.

CLASS OF WORK	UNLESS OTHERWISE SPECIFIED DIMS ARE IN mm. TOLERANCES FOR MEASURE OF LENGTH ARE:							ANGLES = ±2°
	0.5 to 3	> 3 to 6	> 6 to 30	> 30 to 120	> 120 to 400	> 400 to 1000	> 1000 to 2000	
FINE	±0.05	±0.05	±0.1	±0.15	±0.2	±0.3	±0.5	----
MEDIUM X	±0.1	±0.1	±0.2	±0.3	±0.5	±0.8	±1.2	±2
COARSE	±0.2	±0.3	±0.5	±0.8	±1.2	±2	±3	±4
VERY COARSE	----	±0.5	±1	±1.5	±2.5	±4	±6	±8

MATERIAL SEE BOM

FINISH SEE BOM

VENDOR:

P/N:

THIRD ANGLE PROJECTION



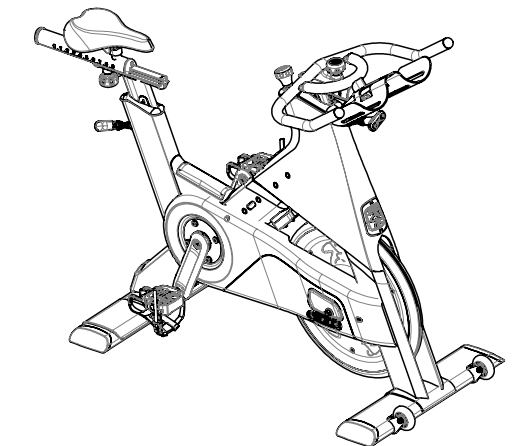
DRAWN	INITIAL OT	DATE 2/24/2014
CHECKED		
APPROVED		
	U.O.M.	MM

CORE HEALTH & FITNESS, LLC
4400 NE 77th Ave., Suite 300
Vancouver, WA 98662

CORE PART NO	REV
740-8567-XX	A
TITLE ASSY, BLADE BELT BIKE	
SCALE: 1:10	SHEET 1 OF 7 SHEET SIZE: B

ITEM NO.	PartNo	DESCRIPTION	QTY.
1	740-8664	CHAINGUARD, OUTER, ION BB	1
2	050-1955	LABEL, WARNING, COMM, SPINNERS	1
3	050-2115	LABEL, COUNTRY OF ORIGIN	1
4	050-2125	LABEL, SERIAL NO, OEM UNIV	1
5	110-3506	SCREW, M8x1.25, 30mm, BHCS, HK, SS	2
6	718-5513	BUSHING, FLANGE, Ø6mm ID X Ø8mm X Ø19mm	1
7	731-0373	WASHER, PLAIN, M6	3
8	731-0379	SCREW, M8 X1.25, 20mm, SHC, HK	2
9	731-0585	WASHER, M4	3
10	731-0801	NUT, RIVET, M6	5
11	740-4588	SCREW, M8 X 1.25, 16MM, BHC, HK, SS	2
12	740-7167	WASHER, LOCK, SPLIT, M6	2
13	740-7174	NUT, M6, HE, SS	2
14	740-7193	LABEL, LOGO, STAR TRAC, SPINNER	1
15	740-7296	BOLT, M6X1.0, 65MM, HEX CAP, SS	2
16	740-7812	SCREW, M4x0.7, 16mm, PHMS, PH, SS	3
17	740-7825	WASHER, 8.4MM ID x 16MM OD x 1.6 THK	6
18	740-7601	CHAINGUARD, MAIN	1
19	740-8011	BLOCK, FLYWHEEL, ADJ, SPINNER	2
20	740-8171	SCREW, M6x1.0, 16mm, SHCS, HE, SS	1
21	740-8191	SCREW, M6x1.0, 30mm, SHCS, HE, SS	2
22	740-8339	GROMMET, CABLE, WATTS H-BAR	1
23	740-8374	ASSY, SEAT POST, BLADE, ION	1
24	740-8524	BELT, POLY K, 6 RIB, NXT BELT	1
25	740-8535	ASSY, FLYWHEEL, SPINNER BELT	1
26	740-8595	ASSY, H-BAR&POST, 11 ADJ, SPIN	1
27	740-8663	CHAINGUARD, INNER, ION BB	1
28	740-7663	WELDMENT, STABILIZER, FRT, BLADE	1
29	001-0688	ASSEMBLY, TRANSPORT WHEEL	2
30	740-7187	SCREW, M6X1.25X10, BHC, HE, SS	2
31	740-8007	BOLT, WHEEL, NXT	2
32	740-7654	STABILIZER, TUBE, EXTRUDE	2
33	740-8250	SCREW, M4.8, 13mm, PHT, PH, SS	8
34	740-7656	FEET, LEVELING, SPINNER	4
35	740-7670	END CAP, FEET, BLADE	4
36	740-7653	WELDMENT, FEET STABILIZER	1
37	740-8545	CRANK, BELT SPINNER, DR	1
38	740-7560	CRANK ARM, LEFT	1
39	740-7555	NUT, AXLE, B/B, M24x1.5	1
40	740-8002	SPACER, BEARING, BB SPINNER	1
41	740-7553	BEARING, 6005 SERIES, 25x47x12, 2RS	2
42	740-7554	B/B AXLE	1
43	740-7916	M5 X 16MM, DOWEL PIN	2

ITEM NO.	PartNo	DESCRIPTION	QTY.
44	740-8145	BOLT, CRANKARM, M8	4
45	740-7614	ASSY, PEDAL, R	1
46	740-7613	ASSY, PEDAL, L	1
47	740-8544	PULLEY, 6 RIB, NXT BELT	1
48	740-7825	WASHER, 8.4MM ID x 16MM OD x 1.6 THK	4
49	740-7167	WASHER, LOCK, SPLIT, M6	4
50	731-0379	SCREW, M8 X1.25, 20mm, SHC, HK	4
51	110-3595	WASHER, 19.5 ODX 8.5 ID X 2mm, SS	2
52	110-3549	LOCKNUT, M8X1.25	2
53	740-8565-XX	WELDMENT, FRAME, ION BIKE	1
54	740-7667	ASSY, POP PIN	1
55	740-7643	SLEEVE, BOTTOM BRACKET, AL	1
56	731-0373	WASHER, PLAIN, M6	2
57	740-8677	BLOCK, BRAKE ROD SLEEVE, ION BB	1
58	740-8163	COVER, GUSSET, STEPOVER	1
59	740-7931	PAD, STRETCH, RUBBER	1
60	740-8364	SLEEVE, HBAR, POST	1
61	740-7941	SLEEVE, SEAT POST	1
62	110-3458	SCREW, M6x1.0, 20mm, FHM, HE, SS	1
63	110-3507	SCREW, M6x1.0, 30mm, FHM, HK, SS	1
64	740-7182	SCREW, M5X0.8X10, BHC, HE, SS	2
65	740-7951	RETAINING RING, EXTERNAL, Ø56mm	1
66	740-8358	BADGE, LATCH, ION, SPINNER	1
67	740-8489-KT	KIT, ASM, BRAKE, ADAPTER, BLADE	1
68	740-7995	ASSY, BRAKE, ADJUSTMENT KNOB	1
69	740-8525	BAR, FRAME STIFFENER, ION BB	1
70	740-8661	ASSY, PLATE, IDLER, ION BELT	1
71	140-3558	BEARING, CLUTCH, 16mm	1
72	740-8539	ASSY, ROLLER, IDLER, NXT BELT'	1
73	110-3556	SCREW, M6X16, HSCHS, SS	1
74	740-8541	DIE, SPRING GUIDE ROD, BELT SPINNER	1
75	110-3557	M5X16, BHSC, SS	1
76	140-3557	SPRING, 103N/mm, +/-5, 18 OD, 9 ID, 70mm LONG	1
77	740-7825	WASHER, 8.4MM ID x 16MM OD x 1.6 THK	2
78	110-3548	HALFNUT, M8X1.25	2
79	110-3550	SPACER, BRASS GUIDE, SPINNER BELT	1
80	140-3248	SPACER, BRASS, IDLER GUIDE	2
81	110-3552	SCREW, M5X0.7X20, HCSH, SS	1
82	740-8562	WASHER, BRASS, CLUTCH BEARING, NXT BELT	2
83	740-8540	D SHAFT, CLUTCH BEARING, NXT BELT	1
84	110-3551	LOCKNUT, M5X0.7	1
85	110-3592	NUT, NYLOCK, M12 X 1.5	1
86	740-8597	ENDCAP, AXLE, SPINNER FLYWHEEL	1



CORE HEALTH & FITNESS, LLC
 4400 NE 77th Ave., Suite 300
 Vancouver, WA 98662

CORE PART NO	740-8567-XX	REV	A
TITLE ASSY, BLADE BELT BIKE			
SCALE: 1:20	SHEET 2 OF 7	SHEET SIZE: B	

9 8 7 6 5 4 3 2 1

NOTES:

1. FOLLOW MFG SPEC ON PROPER INSTALLATION OF RIVET FASTER
2. CLEAN AREAS WITH DENATURED ALCOHOL PRIOR TO ADHERING LOGOS AND LABELS
3. TORQUE TO 15 N-m
4. APPLY LOCTITE 242/243 MED STRENGTH THREAD LOCKER
5. APPLY LOCTITE 609, FOLLOW PROPER APPLICATION DIRECTIONS
6. DO NOT APPLY LOCTITE
7. TORQUE TO 45-50 N-m
8. TORQUE TO 65-67.8 N-m
9. TENSION BELT TO 110 Hz +/- 5 Hz
10. COLOR DESIGNATOR PER -XX AS SPECIFIED IN SOP 620-8222

23
1

SEE SHEET 4

26
1

SEE SHEET 6

25
1

SEE SHEET 5

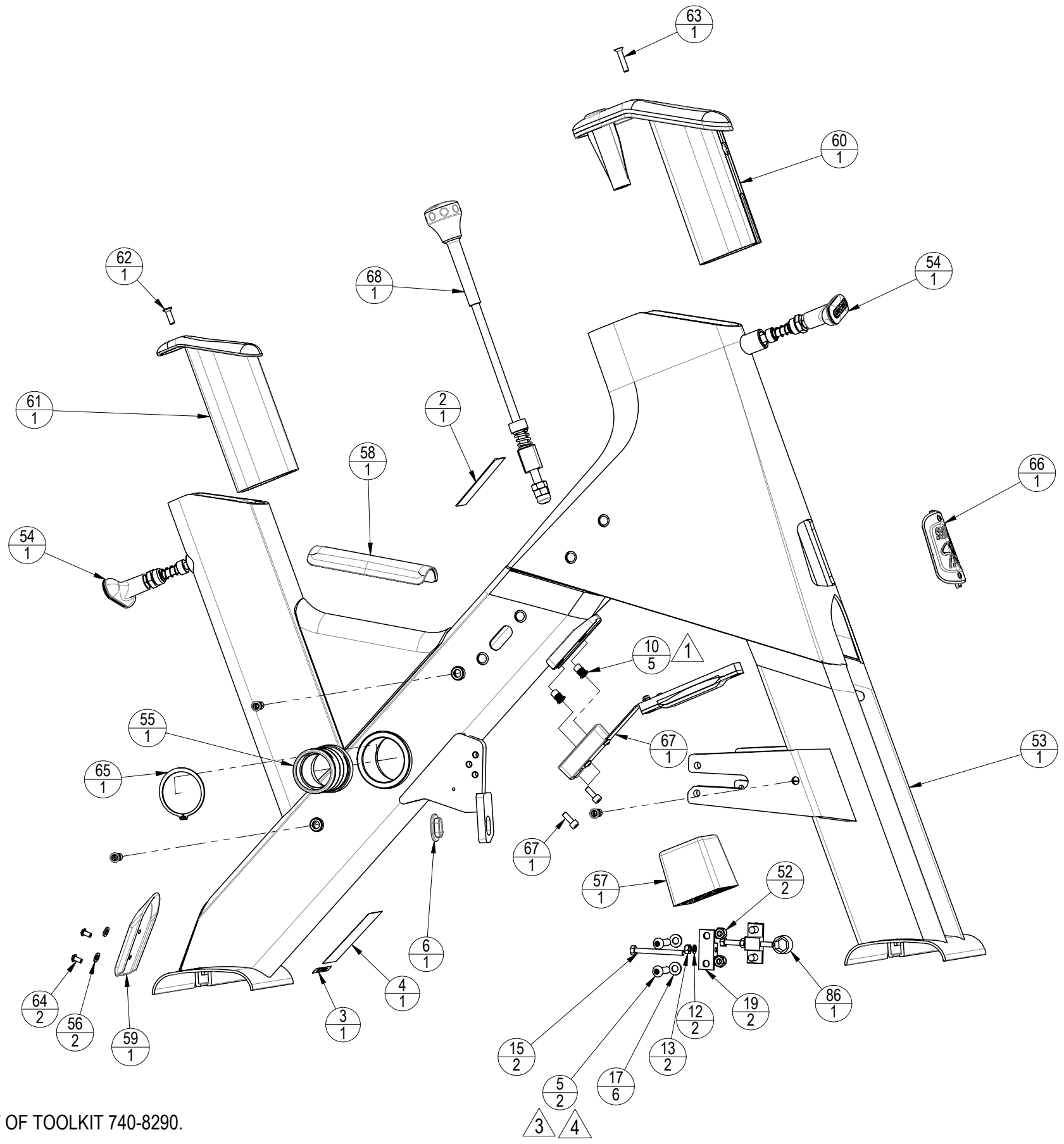
SEE SHEET 7

CORE HEALTH & FITNESS, LLC		
4400 NE 77th Ave., Suite 300 Vancouver, WA 98662		
CORE PART NO	740-8567-XX	REV A
TITLE ASSY, BLADE BELT BIKE		
SCALE: 1:8	SHEET 3 OF 7	SHEET SIZE: B

9 8 7 6 5 4 3 2 1

J
I
H
G
F
E
D
C
B
A

J
I
H
G
F
E
D
C
B
A



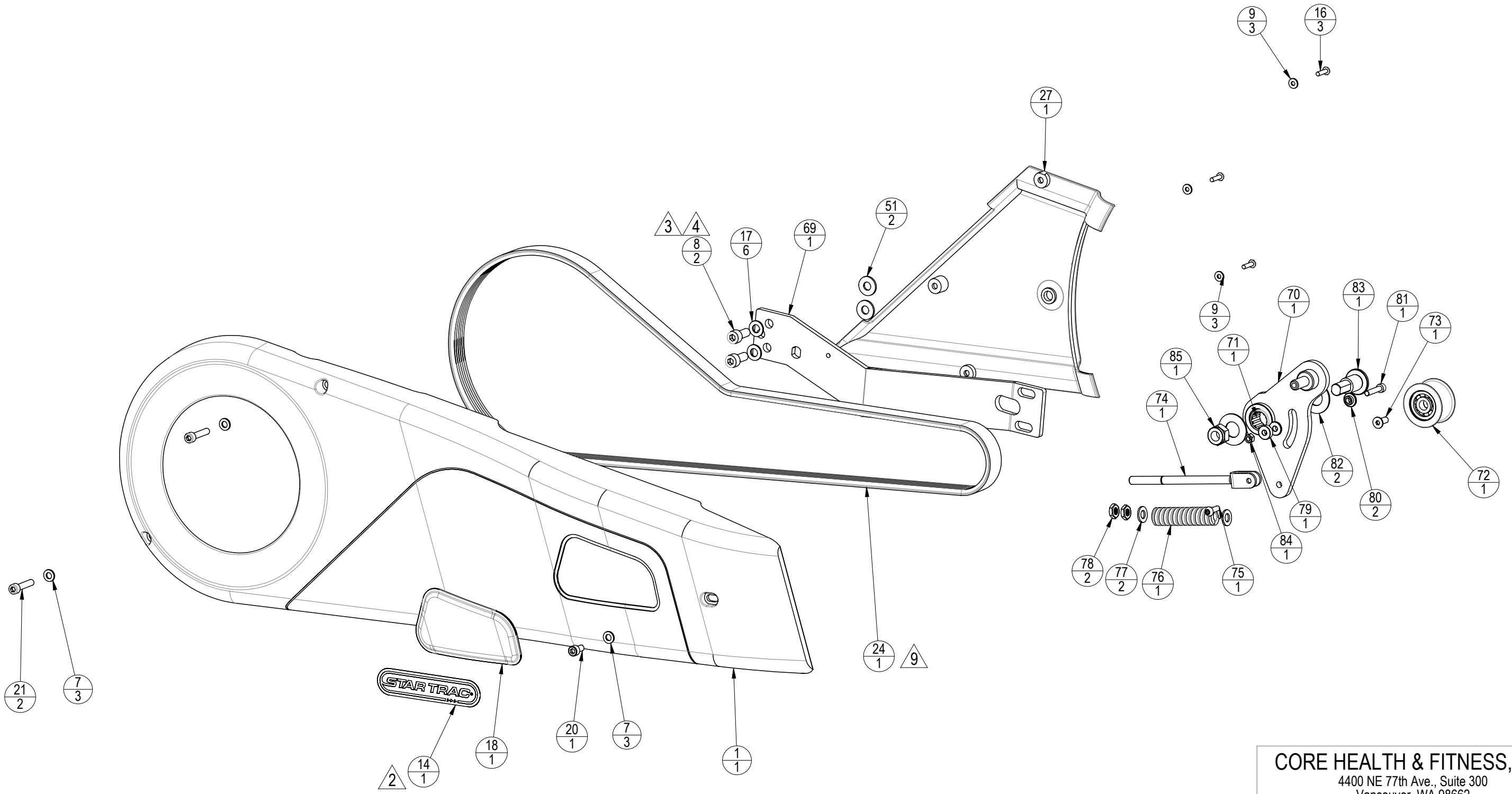
NOTES:

1. ITEMS DENOTED BY * ARE PART OF TOOLKIT 740-8290.

CORE HEALTH & FITNESS, LLC 4400 NE 77th Ave., Suite 300 Vancouver, WA 98662		
CORE PART NO	740-8567-XX	REV A
TITLE ASSY, BLADE BELT BIKE		
SCALE: 1:6	SHEET 4 OF 7	SHEET SIZE: B

9 8 7 6 5 4 3 2 1

- NOTES:
 1. CLEAN AREAS WITH DENATURED ALCOHOL PRIOR TO ADHERING LOGOS AND LABELS
 2. TORQUE TO 15 N-m
 3. APPLY LOCTITE 242 OR 243, MED STRENGTH BLUE THREAD LOCKER
 4. TENSION BELT TO 180 LBS

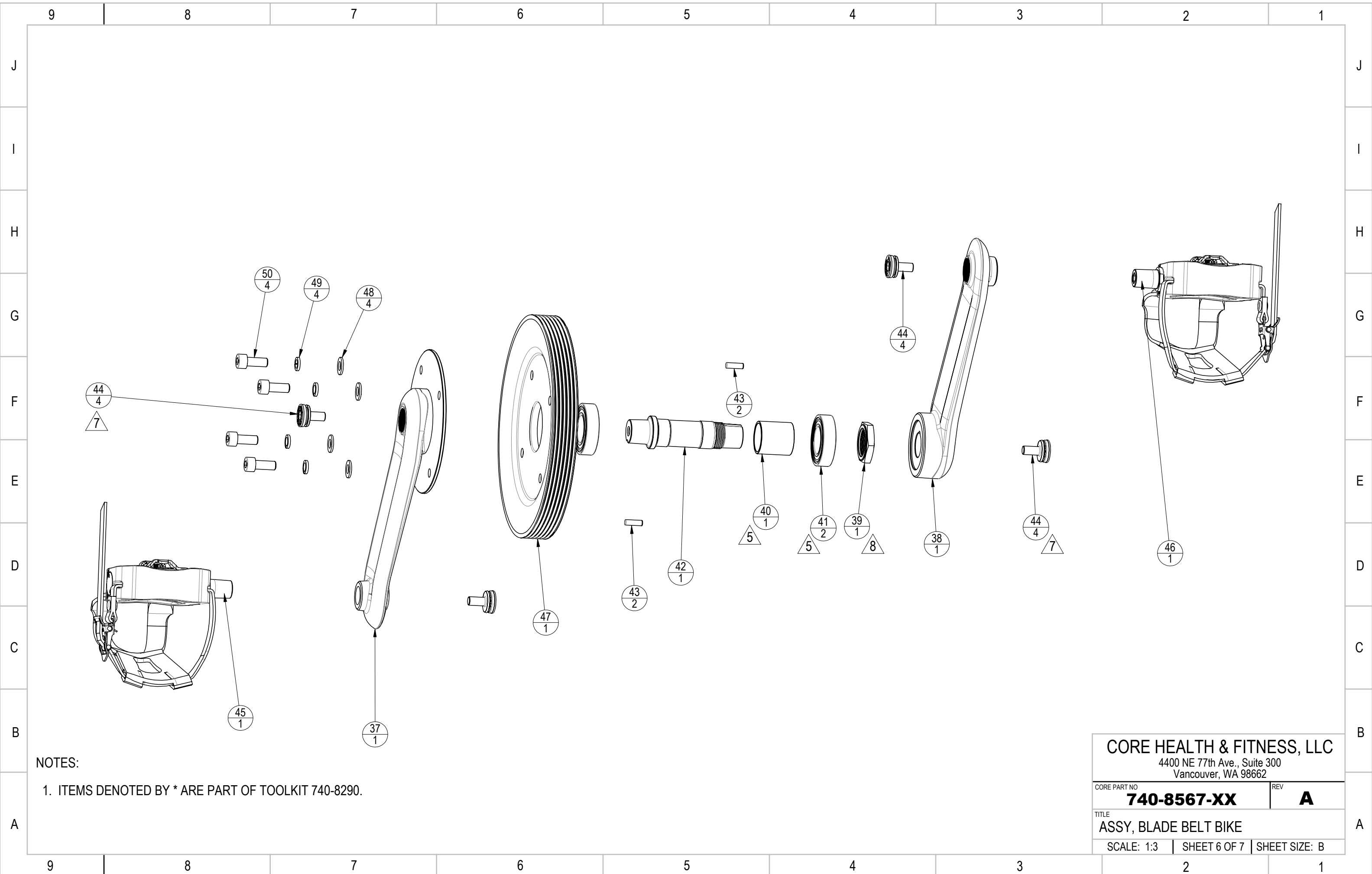


CORE HEALTH & FITNESS, LLC 4400 NE 77th Ave., Suite 300 Vancouver, WA 98662		
CORE PART NO	740-8567-XX	REV A
TITLE ASSY, BLADE BELT BIKE		
SCALE: 1:4	SHEET 5 OF 7	SHEET SIZE: B

9 8 7 6 5 4 3 2 1

J
I
H
G
F
E
D
C
B
A

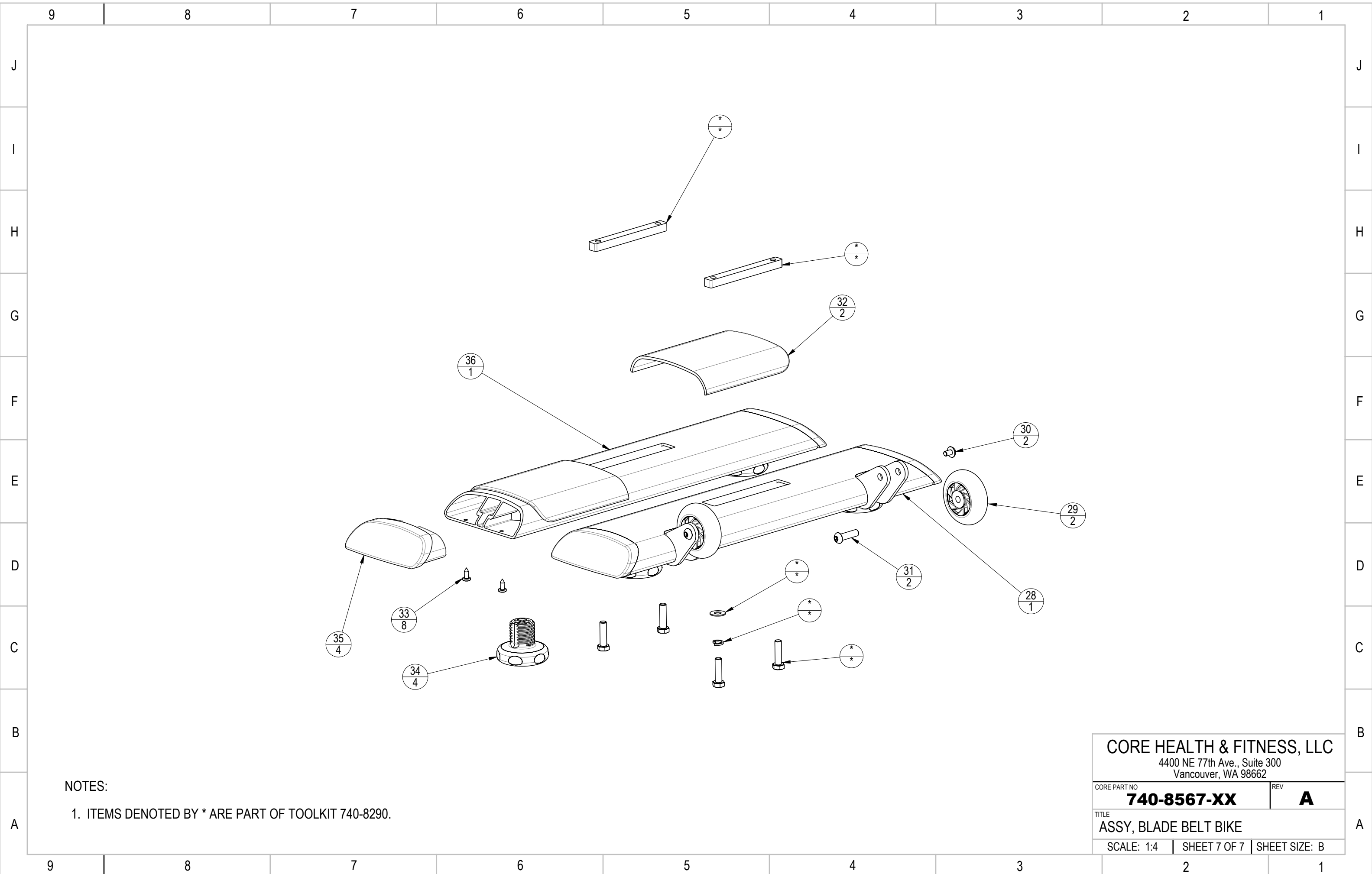
J
I
H
G
F
E
D
C
B
A



NOTES:

1. ITEMS DENOTED BY * ARE PART OF TOOLKIT 740-8290.

CORE HEALTH & FITNESS, LLC 4400 NE 77th Ave., Suite 300 Vancouver, WA 98662		
CORE PART NO	740-8567-XX	REV A
TITLE ASSY, BLADE BELT BIKE		
SCALE: 1:3	SHEET 6 OF 7	SHEET SIZE: B



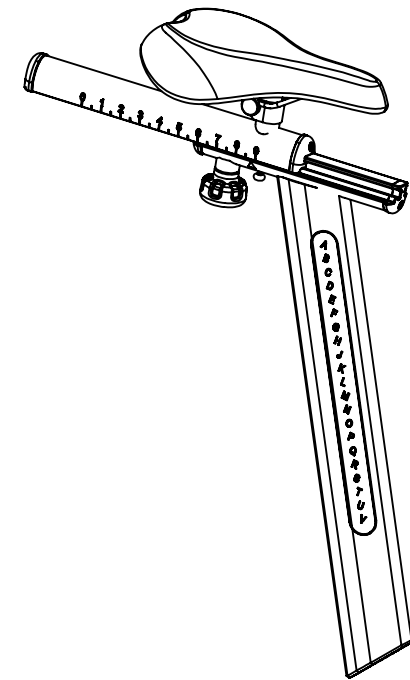
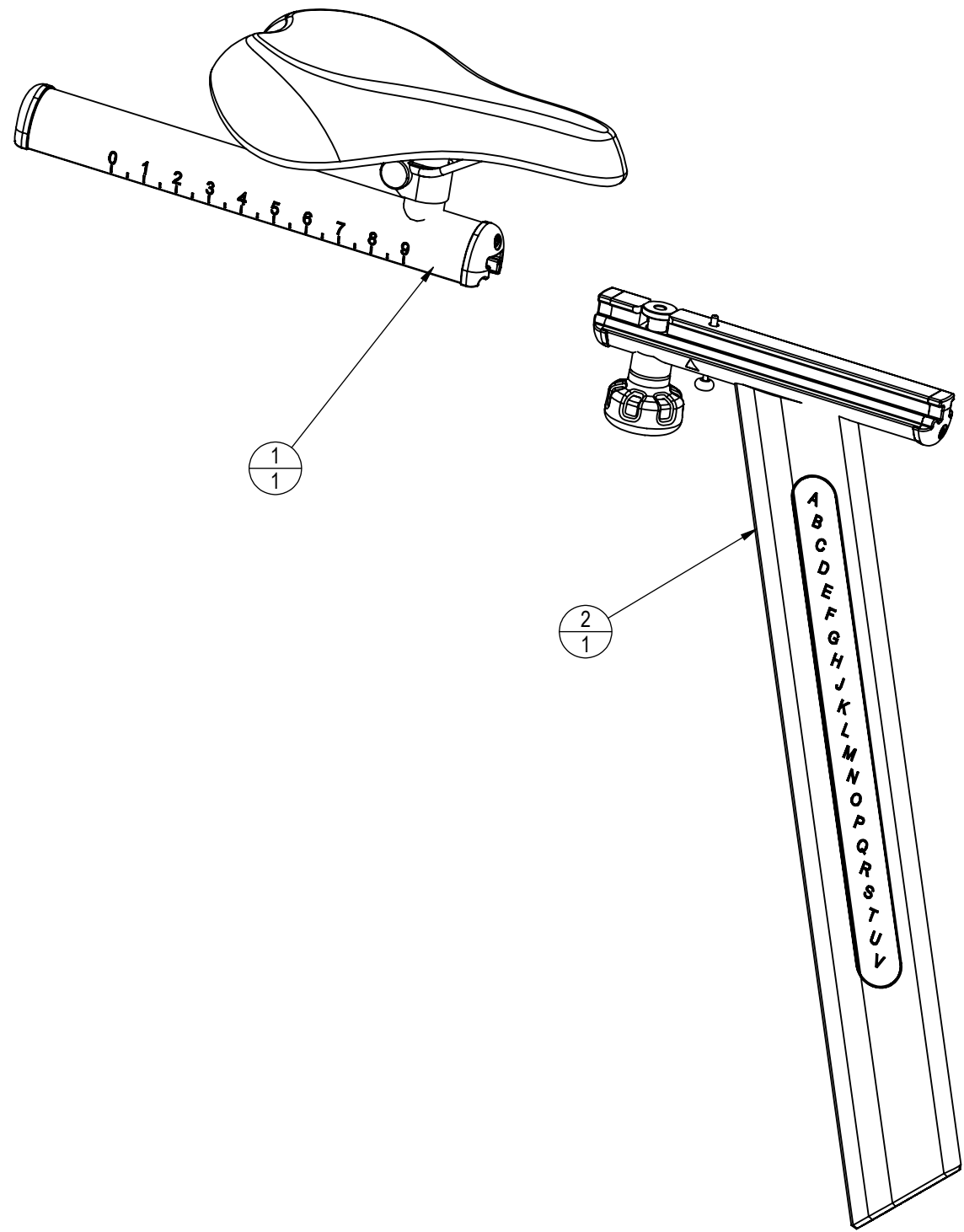
NOTES:

1. ITEMS DENOTED BY * ARE PART OF TOOLKIT 740-8290.

CORE HEALTH & FITNESS, LLC 4400 NE 77th Ave., Suite 300 Vancouver, WA 98662		
CORE PART NO	740-8567-XX	REV A
TITLE ASSY, BLADE BELT BIKE		
SCALE: 1:4	SHEET 7 OF 7	SHEET SIZE: B

NOTES:

REVISION HISTORY				
REV	DATE	DESCRIPTION	ECO	BY
A	7/30/2012	PRODUCTION RELEASE	13782	SCN



ITEM NO.	PART NUMBER	DESCRIPTION	QTY.
1	740-8271	ASSY, SEAT, W/ SLIDER	1
2	740-8285	ASSY, SEAT POST W/ CAPS, BLADE	1

DOCUMENT STATUS:

NOTICE OF PROPRIETARY INFORMATION
THIS DOCUMENT SHALL NOT BE REPRODUCED NOR SHALL THE INFORMATION CONTAINED HEREIN BE USED BY OR DISCLOSED TO OTHER EXCEPT AS EXPRESSLY AUTHORIZED BY CORE INDUSTRIES, INC., D.B.A. STAR TRAC.

CLASS OF WORK	UNLESS OTHERWISE SPECIFIED DIMS ARE IN mm. TOLERANCES FOR MEASURE OF LENGTH ARE:							ANGLES = ±2°
	0.5 to 3	> 3 to 6	> 6 to 30	> 30 to 120	> 120 to 400	> 400 to 1000	> 1000 to 2000	
FINE	±0.05	±0.05	±0.1	±0.15	±0.2	±0.3	±0.5	----
MEDIUM	±0.1	±0.1	±0.2	±0.3	±0.5	±0.8	±1.2	±2
COARSE	±0.2	±0.3	±0.5	±0.8	±1.2	±2	±3	±4
VERY COARSE	----	±0.5	±1	±1.5	±2.5	±4	±6	±8

MATERIAL SEE BOM

FINISH N/A

VENDOR: N/A

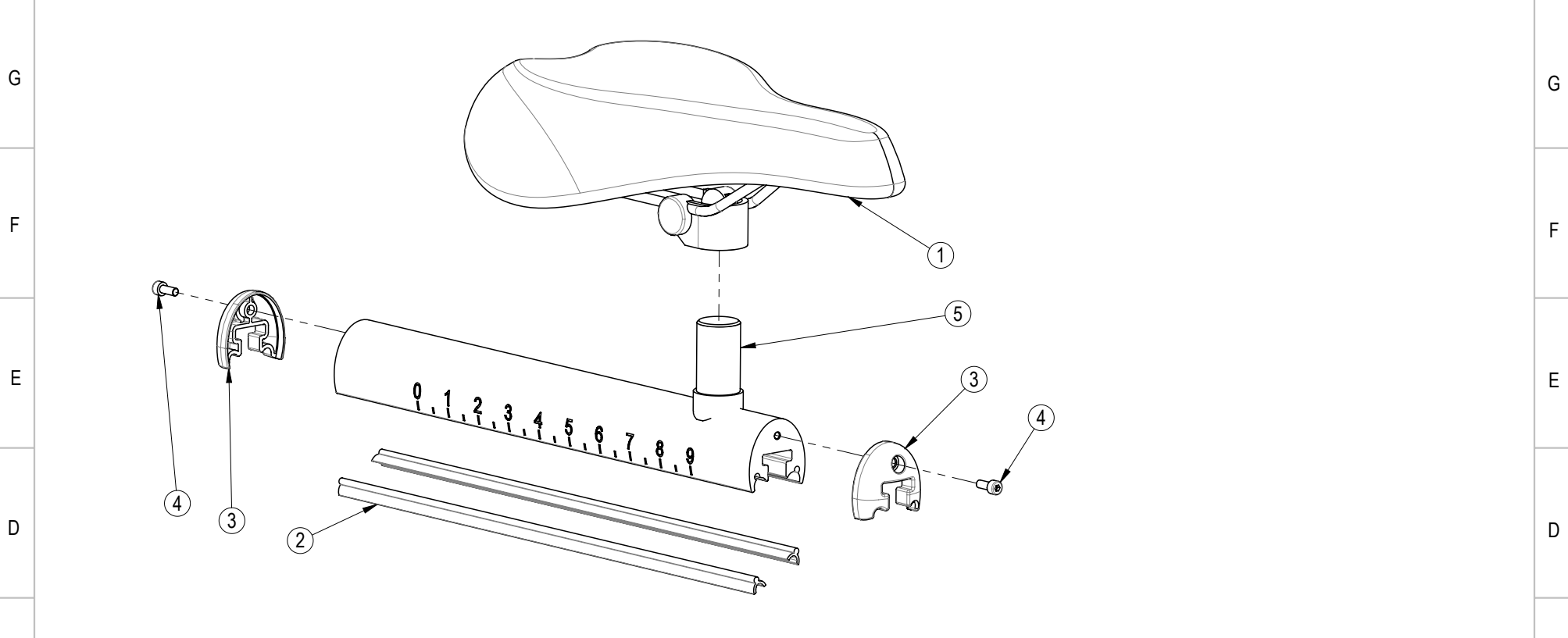
P/N: N/A

THIRD ANGLE PROJECTION		
DRAWN	INITIAL SCN	DATE 7/13/2012
CHECKED		
APPROVED		

CORE INDUSTRIES, INC. DBA		14410 Myford Road Irvine CA 92606
STAR TRAC		
STARTRAC PART NO	740-8374	REV A
TITLE ASSY, SEAT POST, BLADE, ION		
SCALE: 1:4	SHEET 1 OF 1	SHEET SIZE: B

H NOTES:

REVISION HISTORY				
REV	DATE	DESCRIPTION	ECO	BY
A	2/2/2012	PRODUCTION RELEASE	13652	DMM



CLASS OF WORK	FINE	MEDIUM	COARSE	VERY COARSE
			X	

UNLESS OTHERWISE SPECIFIED DIMS ARE IN mm. TOLERANCES FOR MEASURE OF LENGTH ARE: ANGLES ±2°	0.5 to 3	±0.05	±0.1	±0.2	---
	> 3 to 6	±0.05	±0.1	±0.3	±0.5
	> 6 to 30	±0.1	±0.2	±0.5	±1
	> 30 to 120	±0.15	±0.3	±0.8	±1.5
	> 120 to 400	±0.2	±0.5	±1.2	±2.5
	> 400 to 1000	±0.3	±0.8	±2	±4
	> 1000 to 2000	±0.5	±1.2	±3	±6
	> 2000	---	±2	±4	±8

DOCUMENT STATUS:

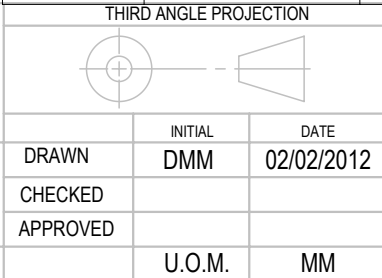
NOTICE OF PROPRIETARY INFORMATION
 THIS DOCUMENT SHALL NOT BE REPRODUCED NOR SHALL THE INFORMATION CONTAINED HEREIN BE USED BY OR DISCLOSED TO OTHER EXCEPT AS EXPRESSLY AUTHORIZED BY CORE INDUSTRIES INC. D.B.A. STAR TRAC.

MATERIAL
SEE BOM

FINISH
N/A

VENDOR: N/A P/N: N/A

ITEM NO.	PART NUMBER	DESCRIPTION	QTY.
1	740-8077	SADDLE, SILVER, NXT	1
2	740-8257	SLIDER INSERT, 225mm L	2
3	740-8259	END CAP, SLIDER, FEMALE	2
4	740-8262	SCREW, M4 X .7, 10mm, SHCS, HK, SS	2
5	740-8272	WELDMENT, TOP SLIDER, SEAT	1



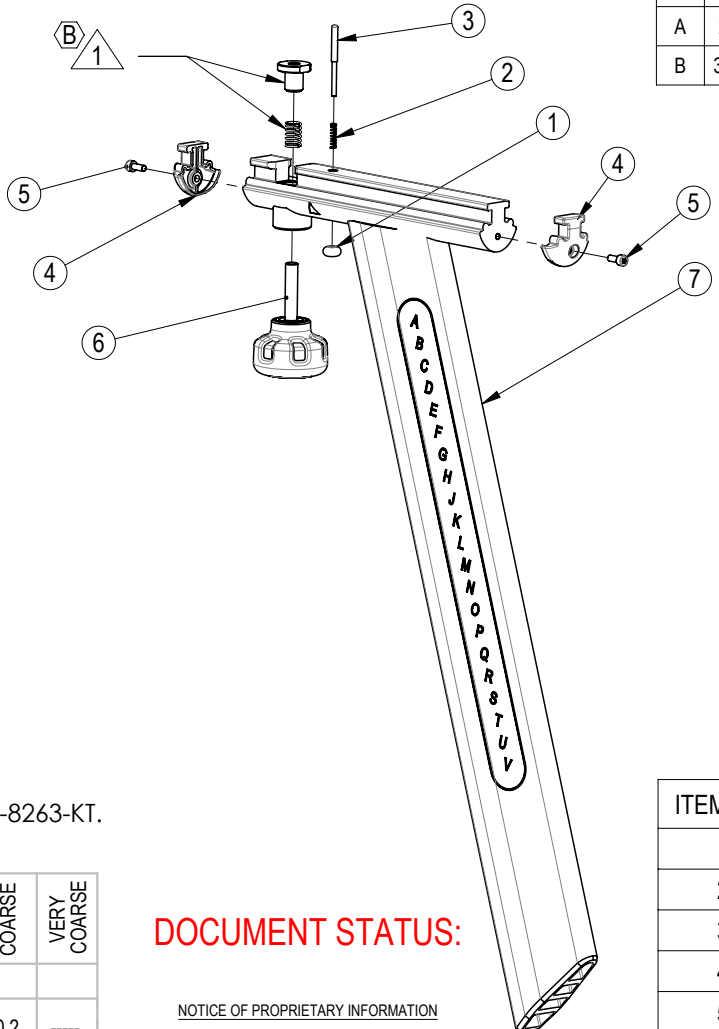
CORE INDUSTRIES INC., DBA
 14410 Myford Road
 Irvine CA 92606

STAR TRAC PART NO **740-8271** REV **A**

TITLE
ASSY, SEAT, W/ SLIDER

SCALE: 1:3 | SHEET 1 OF 1 | SHEET SIZE: A

REVISION HISTORY				
REV	DATE	DESCRIPTION	ECO	BY
A	2/2/2012	PRODUCTION RELEASE	13652	DMM
B	3/23/2012	REPLACED ITEM 740-7666 WITH 740-8263-KT	13720	DMM



NOTES:

B 1. PART OF KIT 740-8263-KT.

DOCUMENT STATUS:

NOTICE OF PROPRIETARY INFORMATION
 THIS DOCUMENT SHALL NOT BE REPRODUCED NOR SHALL THE INFORMATION CONTAINED HEREIN BE USED BY OR DISCLOSED TO OTHER EXCEPT AS EXPRESSLY AUTHORIZED BY CORE INDUSTRIES INC. D.B.A. STAR TRAC.

MATERIAL
SEE BOM

FINISH
N/A


VENDOR: N/A P/N: N/A

CLASS OF WORK	FINE	MEDIUM	COARSE	VERY COARSE	
		±0.05	±0.1	±0.2	----
		X			
UNLESS OTHERWISE SPECIFIED DIMS ARE IN mm. TOLERANCES FOR MEASURE OF LENGTH ARE: ANGLES ±2°	0.5 to 3	±0.05	±0.1	±0.2	----
	> 3 to 6	±0.05	±0.1	±0.3	±0.5
	> 6 to 30	±0.1	±0.2	±0.5	±1
	> 30 to 120	±0.15	±0.3	±0.8	±1.5
	> 120 to 400	±0.2	±0.5	±1.2	±2.5
	> 400 to 1000	±0.3	±0.8	±2	±4
	> 1000 to 2000	±0.5	±1.2	±3	±6
> 2000	----	±2	±4	±8	

ITEM NO.	PART NUMBER	DESCRIPTION	QTY.
1	740-7270	KNOB, SEAT SLIDER, STOPPER	1
2	740-7271	SPRING, SEAT SLIDER, NXT	1
3	740-7526	PIN, STOP, SEAT SLIDER	1
4	740-8260	END CAP, SLIDER, MALE	2
5	740-8262	SCREW, M4 X .7, 10mm, SHCS, HK, SS	2
6	740-8263-KT	KIT, SEAT KNOB, F/A ADJUST, SPINNER	1
7	740-8278	WELDMNT, SEAT POST, BLADE	1

THIRD ANGLE PROJECTION



CORE INDUSTRIES INC., DBA

 14410 Myford Road
 Irvine CA 92606

DRAWN	INITIAL DMM	DATE 02/02/2012
CHECKED		
APPROVED		
	U.O.M.	MM

STAR TRAC PART NO 740-8285	REV B
TITLE ASSY, SEAT POST W/ CAPS, BLADE	
SCALE: 1:5	SHEET 1 OF 1 SHEET SIZE: A

10 9 8 7 6 5 4 3 2 1

H NOTES:

REVISION HISTORY

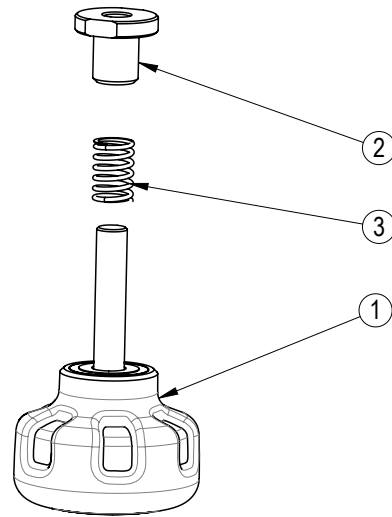
REV	DATE	DESCRIPTION	ECO	BY
A	3/23/2012	PRODUCTION RELEASE	13720	DMM

G

F

E

D



C

B

A

CLASS OF WORK	FINE	MEDIUM	COARSE	VERY COARSE
		X		

UNLESS OTHERWISE SPECIFIED DIMS ARE IN mm. TOLERANCES FOR MEASURE OF LENGTH ARE: ANGLES ±2°	0.5 to 3	±0.05	±0.1	±0.2	----
	> 3 to 6	±0.05	±0.1	±0.3	±0.5
	> 6 to 30	±0.1	±0.2	±0.5	±1
	> 30 to 120	±0.15	±0.3	±0.8	±1.5
	> 120 to 400	±0.2	±0.5	±1.2	±2.5
	> 400 to 1000	±0.3	±0.8	±2	±4
	> 1000 to 2000	±0.5	±1.2	±3	±6
	> 2000	----	±2	±4	±8

DOCUMENT STATUS:

NOTICE OF PROPRIETARY INFORMATION
 THIS DOCUMENT SHALL NOT BE REPRODUCED NOR SHALL THE INFORMATION CONTAINED HEREIN BE USED BY OR DISCLOSED TO OTHER EXCEPT AS EXPRESSLY AUTHORIZED BY CORE INDUSTRIES INC, D.B.A. STAR TRAC.

MATERIAL
SEE BOM

FINISH
N/A

VENDOR: N/A

P/N: N/A

ITEM NO.	PART NUMBER	DESCRIPTION	QTY.
1	740-8263	KNOB, ADJUST, W/ BRASS INSERT	1
2	740-8329	HOLDING NUT, SEAT SLIDER, SPINNER	1
3	740-8330	SPRING, FORE/AFT ADJUST, SPINNER	1

THIRD ANGLE PROJECTION



CORE INDUSTRIES INC., DBA

 14410 Myford Road
 Irvine CA 92606

STAR TRAC PART NO **740-8263-KT** REV **A**

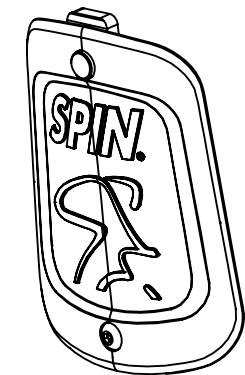
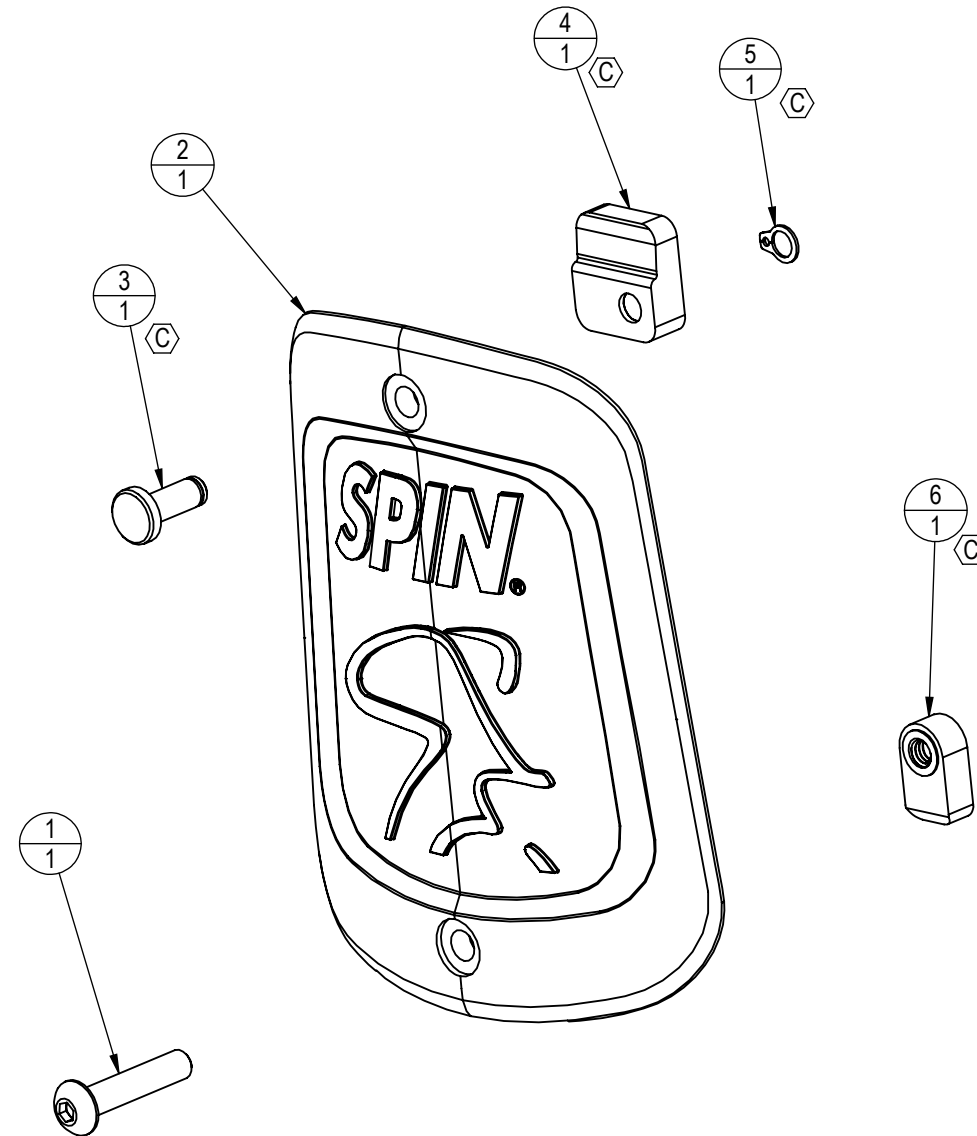
TITLE
KIT, SEAT KNOB, F/A ADJUST, SPINNER

SCALE: 1:2 | SHEET 1 OF 1 | SHEET SIZE: A

10 9 8 7 6 5 4 3 2 1

NOTES:

REVISION HISTORY				
REV	DATE	DESCRIPTION	ECO	BY
A	7/19/2012	PRODUCTION RELEASE	13782	SCN
B	10/19/2012	SHEET 2: ADD DETAIL C TO SHOW ADD'L CHG'S, CHG HOLE SIZE WAS $\phi 3$ IS $\phi 2.4$	13865	SCN
C	4/28/2014	ADD ITEMS 3, 4, 5, 6.	14310	OT



ITEM NO.	PART NUMBER	DESCRIPTION	QTY.
1	740-8005	SCREW, M4 X 0.7, 20mm, BHS, SS	1
2	740-8358_001	BADGE, COVER, ION	1
3	740-8586	PIN, HOOK, ION BADGE	1
4	740-8588	HOOK ASSM, OVERMOLD, ION BADGE	1
5	9740-8587	CLIP, PIN, ION BADGE	1
6	740-8589	LATCH ASSEMBLY, IODINE BADGE	1

DOCUMENT STATUS:

NOTICE OF PROPRIETARY INFORMATION

THIS DOCUMENT SHALL NOT BE REPRODUCED NOR SHALL THE INFORMATION CONTAINED HEREIN BE USED BY OR DISCLOSED TO OTHER EXCEPT AS EXPRESSLY AUTHORIZED BY CORE INDUSTRIES, INC., D.B.A. STAR TRAC.

CLASS OF WORK	UNLESS OTHERWISE SPECIFIED DIMS ARE IN mm. TOLERANCES FOR MEASURE OF LENGTH ARE:							ANGLES = $\pm 2^\circ$
	0.5 to 3	> 3 to 6	> 6 to 30	> 30 to 120	> 120 to 400	> 400 to 1000	> 1000 to 2000	
FINE	± 0.05	± 0.05	± 0.1	± 0.15	± 0.2	± 0.3	± 0.5	----
MEDIUM X	± 0.1	± 0.1	± 0.2	± 0.3	± 0.5	± 0.8	± 1.2	± 2
COARSE	± 0.2	± 0.3	± 0.5	± 0.8	± 1.2	± 2	± 3	± 4
VERY COARSE	----	± 0.5	± 1	± 1.5	± 2.5	± 4	± 6	± 8

MATERIAL SEE BOM

FINISH SEE BOM

VENDOR:

P/N:

THIRD ANGLE PROJECTION

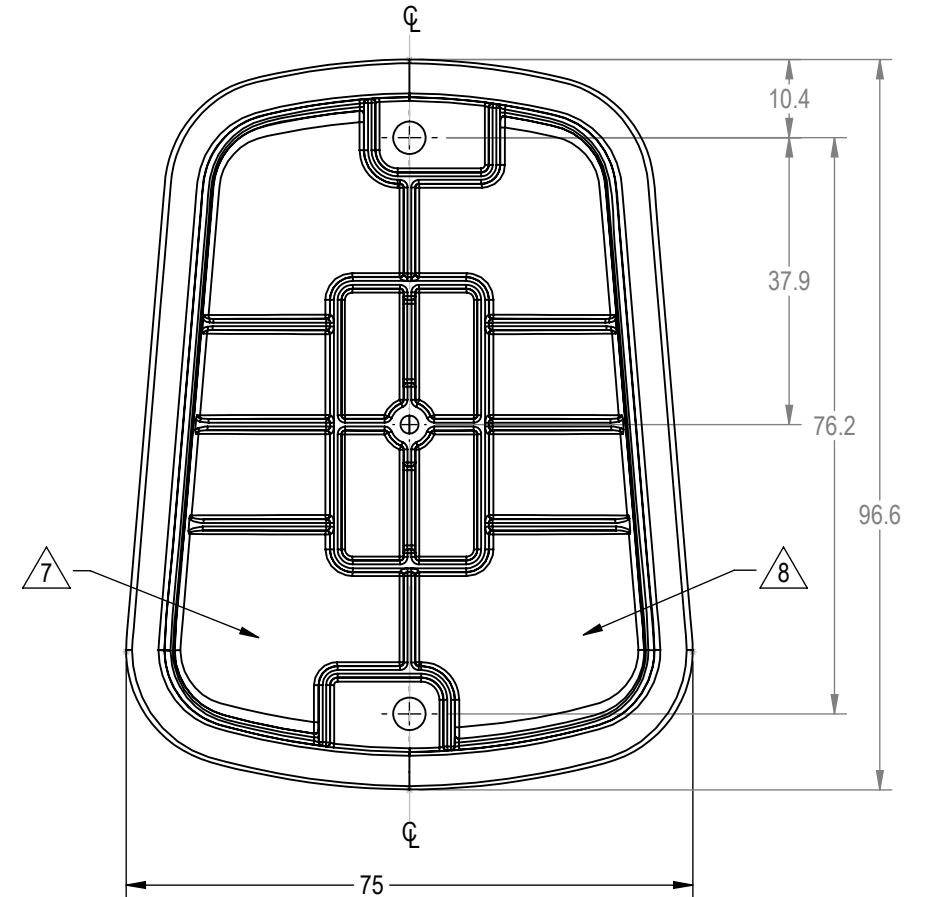
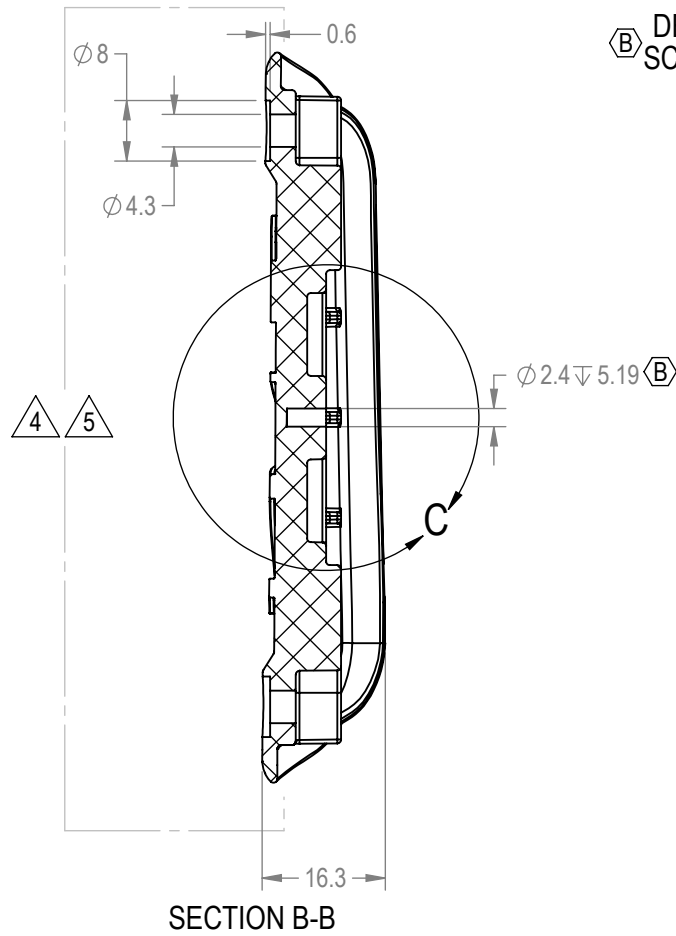
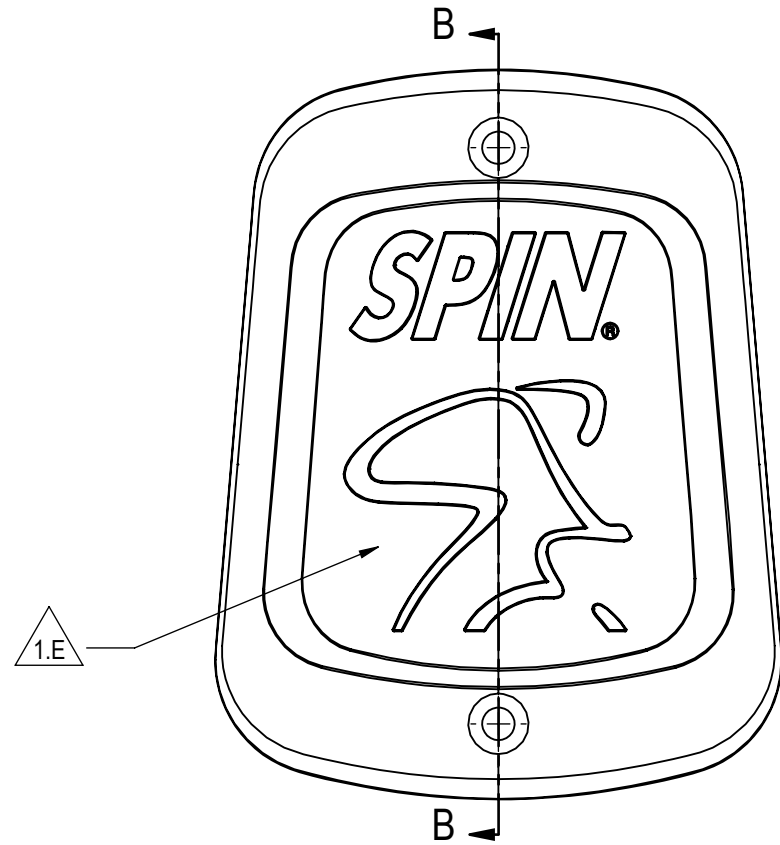
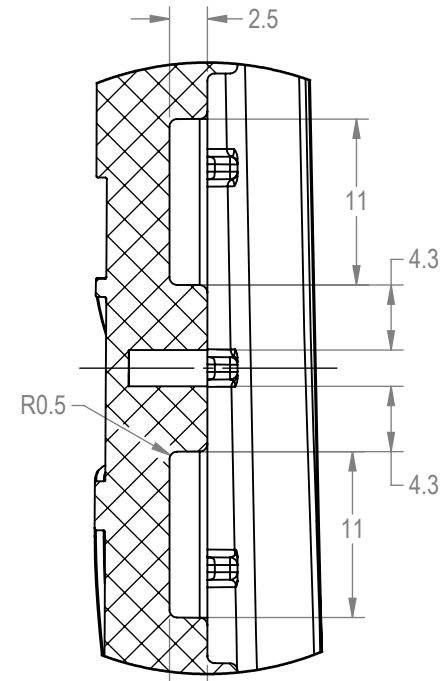


DRAWN	INITIAL SCN	DATE 6/21/2012
CHECKED		
APPROVED		

CORE INDUSTRIES, INC. DBA		14410 Myford Road Irvine CA 92606	
STAR TRAC			
STARTRAC PART NO		REV	
740-8358		C	
TITLE			
BADGE, LATCH, ION, SPINNER			
SCALE: 1:1	SHEET 1 OF 2	SHEET SIZE: B	

NOTES:

1. PART NUMBER: 740-8358_001
2. MATERIAL:
 - A. FLAME RETARDANT ABS (OR ENGINEERING APPROVED EQUIVALENT). FLAME RATING UL94V1 OR BETTER
 - B. PART SHALL BE FABRICATED BY INJECTION MOLDING
 - C. COLOR: WHITE
 - D. FINISH: PART TO BE CHROME PLATED
 - E. LOGO: SILK SCREEN BLACK AS NOTED
3. DRAWING IS FOR REFERENCE ONLY. PLEASE REFER TO SOLIDWORKS MODEL 740-9358_001.SLDPRJT FOR ACTUAL GEOMETRY AND DIMENSIONS. (SAME REV AS DRAWING)
4. PART TO BE FREE FROM OIL AND MOLD RELEASE RESIDUE
5. NOTED SURFACE TO BE FREE FROM BLEMISHES, GATE AND SINK MARKS, KNIT LINES, AND EJECTOR PIN MARKS
6. EJECTOR PIN MARKS TO BE FLUSH OR UP TO 0.25mm BELOW SURFACE
7. PART NUMBER TO BE ETCHED INTO TOOL AS SHOWN - 14 PT LETTERING (3.6mm TALL)
8. RECYCLING SYMBOL MUST BE MOLDED INTO PLASTIC APPROXIMATELY AS SHOWN, SYMBOL SHOULD BE 12mm TALL, SYMBOL MUST BE CLEAR AND VISIBLE
9. USE TOLERANCE FROM SHEET 1

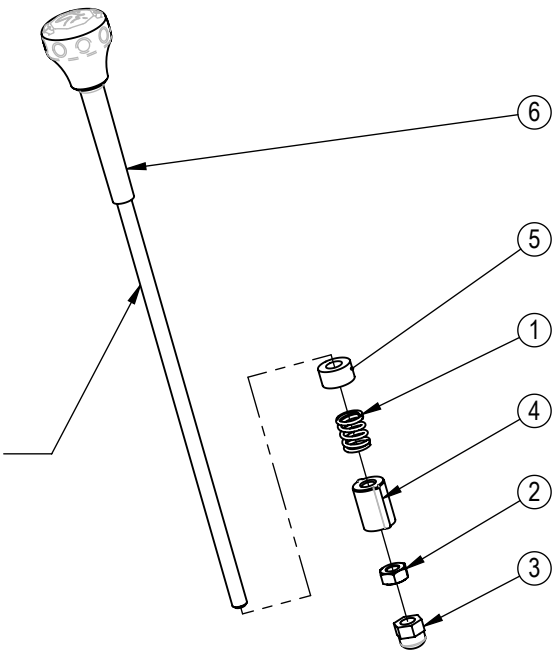


CORE INDUSTRIES, INC. DBA		14410 Myford Road
		Irvine CA 92606
STARTRAC PART NO	740-8358	REV C
TITLE BADGE, LATCH, ION, SPINNER		
SCALE: 1:1	SHEET 2 OF 2	SHEET SIZE: B

NOTES:

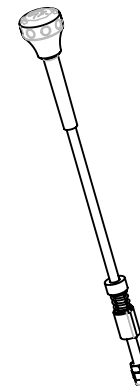
REVISION HISTORY				
REV	DATE	DESCRIPTION	ECO	BY
A	3/7/2011	PRODUCTION RELEASE	13486	DMM

APPLY HIGH QUALITY MOLY-BASED LITHIUM GREASE TO ENTIRE LENGTH OF THREAD



APPLY GREASE TO INSIDE AND OUTSIDE OF ITEM 740-7573

TORQUE TO 80-85 N-m



ITEM NO.	PART NUMBER	DESCRIPTION	QTY
1	740-7124	SPRING, BRAKE KNOB	1
2	740-7178	NUT, M10X1.5, HE, SS	1
3	740-7189	NUT, M10X1.5, ACORN, SS	1
4	740-7573	BUSHING, THREADED, BRAKE	1
5	740-7598	CUSHION, BRAKE ASSY	1
6	740-7669	ASSY, KNOB, BRAKE, SPINNER	1

DOCUMENT STATUS:

NOTICE OF PROPRIETARY INFORMATION

THIS DOCUMENT SHALL NOT BE REPRODUCED NOR SHALL THE INFORMATION CONTAINED HEREIN BE USED BY OR DISCLOSED TO OTHER EXCEPT AS EXPRESSLY AUTHORIZED BY CORE INDUSTRIES INC, D.B.A. STAR TRAC.

MATERIAL
SEE BOM

FINISH

VENDOR:

P/N:

THIRD ANGLE PROJECTION



CORE IND INC., DBA



14410 Myford Road
Irvine CA 92606

STAR TRAC PART NO

740-7995

REV

A

TITLE

ASSY, BRAKE, ADJUSTMENT KNOB

SCALE: 1:5

SHEET 1 OF 1

SHEET SIZE: A

CLASS OF WORK	FINE	MEDIUM	COARSE	VERY COARSE
			X	

UNLESS OTHERWISE SPECIFIED DIMS ARE IN mm. TOLERANCES FOR MEASURE OF LENGTH ARE: ANGLES ±2°	0.5 to 3	> 3 to 6	> 6 to 30	> 30 to 120	> 120 to 400	> 400 to 1000	> 1000 to 2000	> 2000
		±0.05	±0.05	±0.1	±0.15	±0.2	±0.3	±0.5
			±0.1	±0.15	±0.2	±0.3	±0.5	----
			±0.2	±0.2	±0.3	±0.5	±0.8	±1
			±0.2	±0.3	±0.5	±0.8	±1.2	±1.5
			±0.2	±0.5	±0.8	±1.2	±2	±2.5
			±0.3	±0.8	±1.2	±2	±3	±4
			±0.5	±1.2	±2	±3	±4	±6
			----	±2	±3	±4	±6	±8