

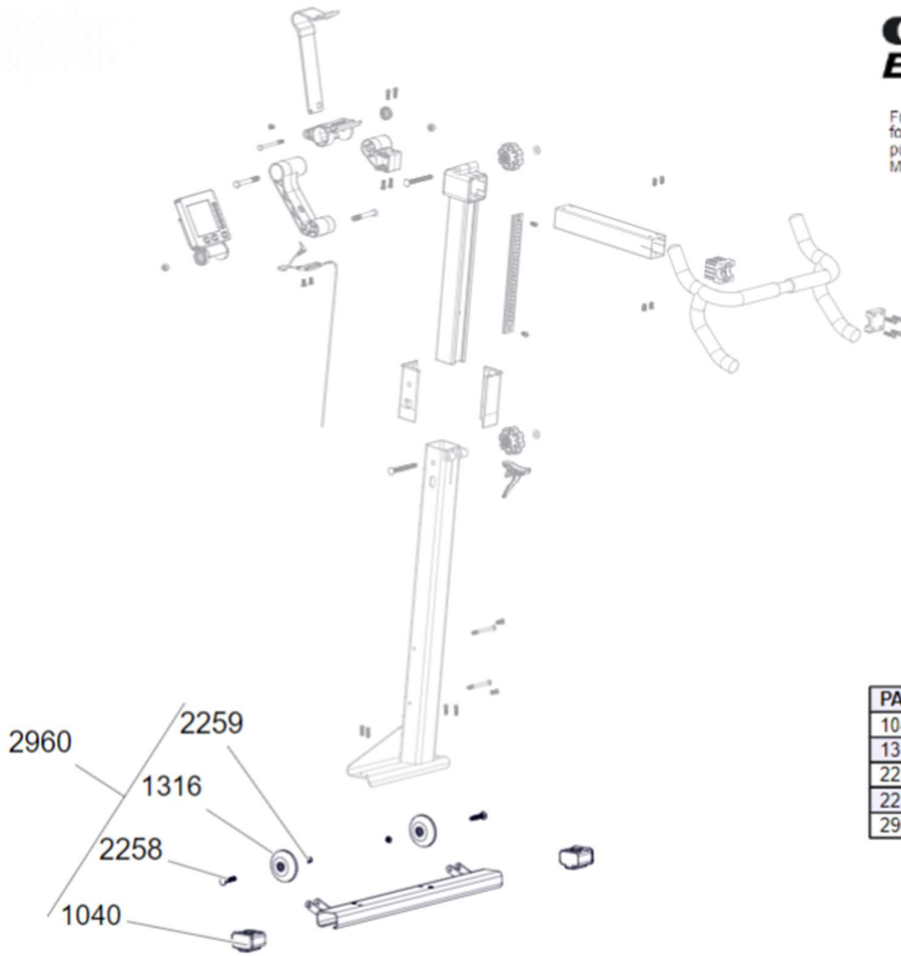
**concept 2**  
**BikeERG**

PART No.	NAME	QTY
1143	HANDLEBARS	1
1224	1/4-20 X 3-1/4 PARTIAL THREAD HEX HEAD SCREW	1
1231	1/4-20 X 1/2 BUTTON HEAD SCREW	6
1238	6-LOBE T-27 1/4-20 X 3/8 BUTTON HEAD SCREW	1
1287	1/4-20 X 3 BUTTON HEAD SCREW	2
1288	3/8-16 X 3 HEX HEAD SCREW	2
1271	3/8 - 16 SS HEX NUT	2
1299	6-LOBE T-27 1/4-20 X 1/2 BUTTON HEAD SCREW	6
2023	RATCHET	1
2028	FRONT PAWL	1
2195	HANDLEBAR SLIDE RAIL	1
2233	1/4-20 X 3/4 BUTTON HEAD SCREW	6
2255	KNOB	2
2257	5/16 X 3 1/2 CARRIAGE BOLT	2
2259	5/16 LOW PROFILE NYLOCK NUT	2
2272	NYLON PLASTIC WASHER FOR 5/16 SCREW	2
2302	FRONT LEG SLEEVE	1
2313	FRONT LEG SLEEVE WITH WIRE CLIP	1
2407	MONITOR CABLE	1
2485	BIKERG FRONT FOOT ASSEMBLY	1
2804	HANDLEBAR MOUNT ASSEMBLY	1
2875	FRONT LEG ASSEMBLY	1
2941	HANDLEBAR POST ASSEMBLY	1
2983	PMS MONITOR	1
7103	TABLET MOUNT BASE	1
7104	TABLET MOUNT SLIDER	1
7105	TABLET MOUNT DROP ARM	1
7120	DEVICE HOLDER KNOB	1
7148	RIGHT FOOTCASTER ASSEMBLY	1
7149	LEFT FOOTCASTER ASSEMBLY	1

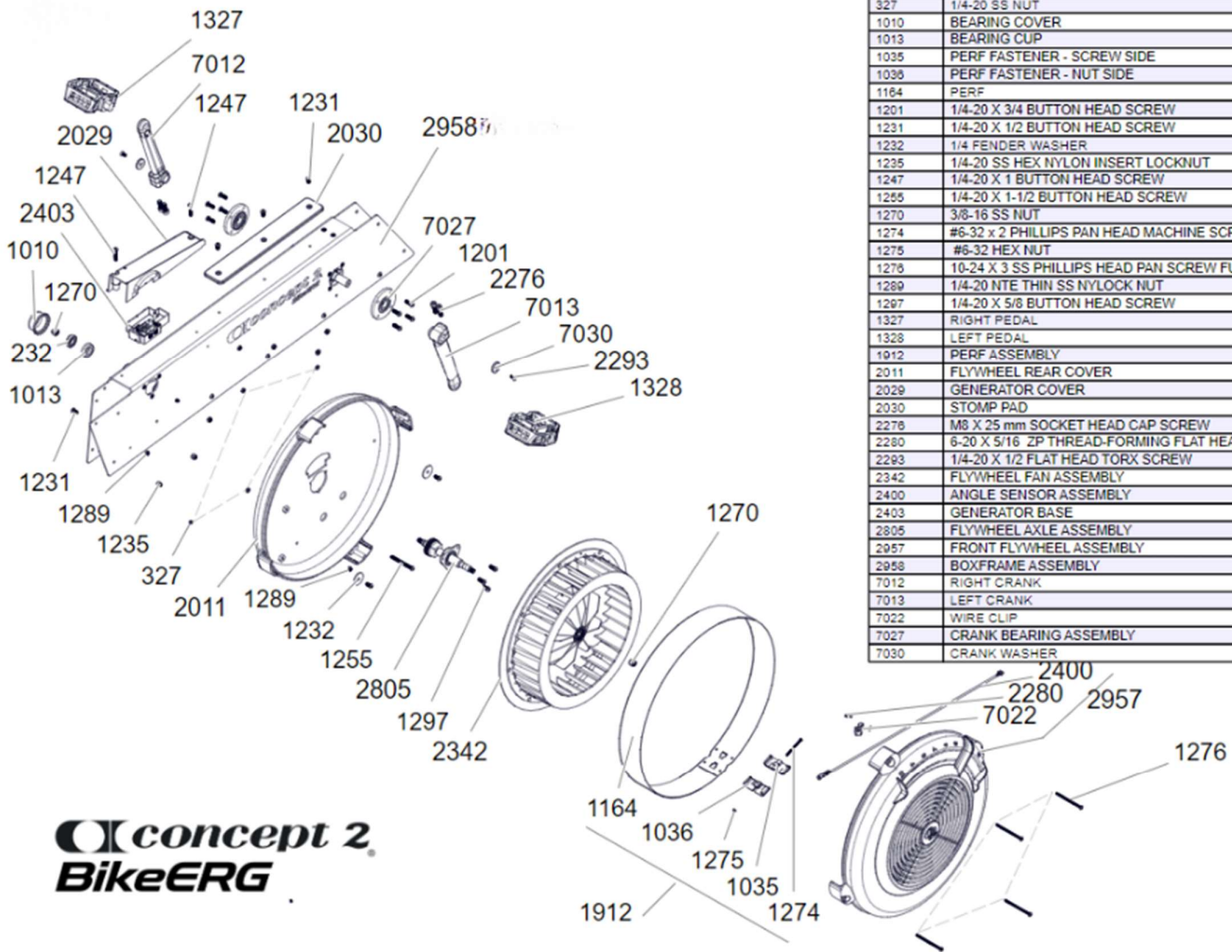


# concept 2 BikeERG

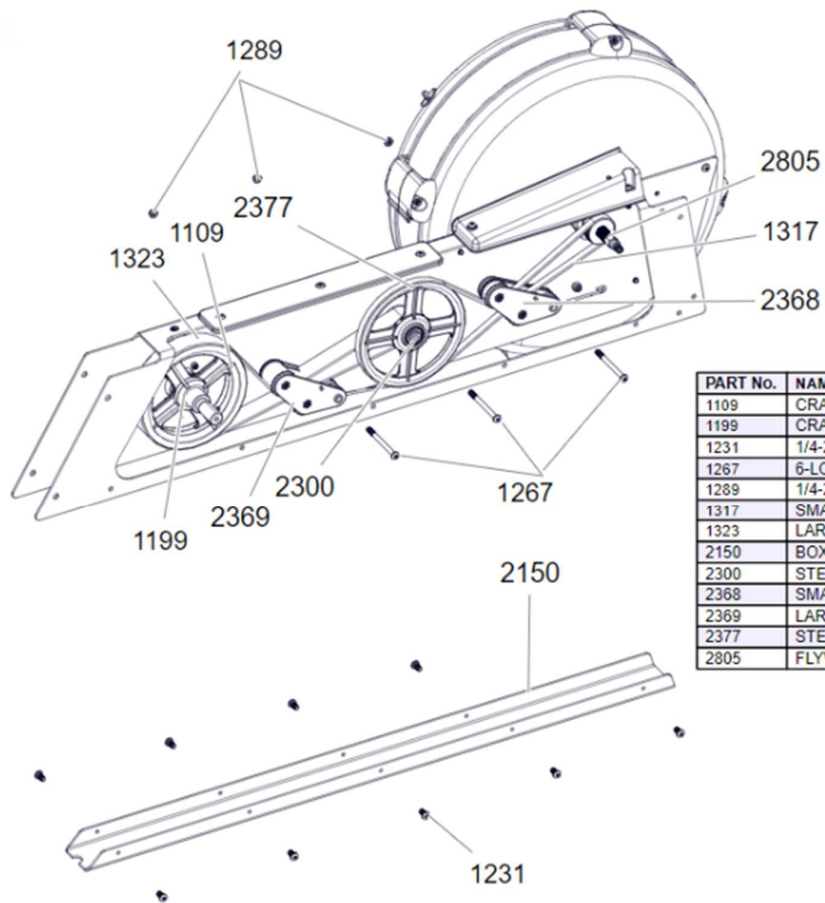
Front foot details  
for BikeErgs  
purchased before  
May of 2023:



PART No.	NAME	QTY
1040	FOOT CAP	2
1316	CASTER	2
2258	5/16 X 1.75 CARRIAGE BOLT	2
2259	5/16 LOW PROFILE NYLOCK NUT	2
2960	FRONT FOOT ASSEMBLY	1



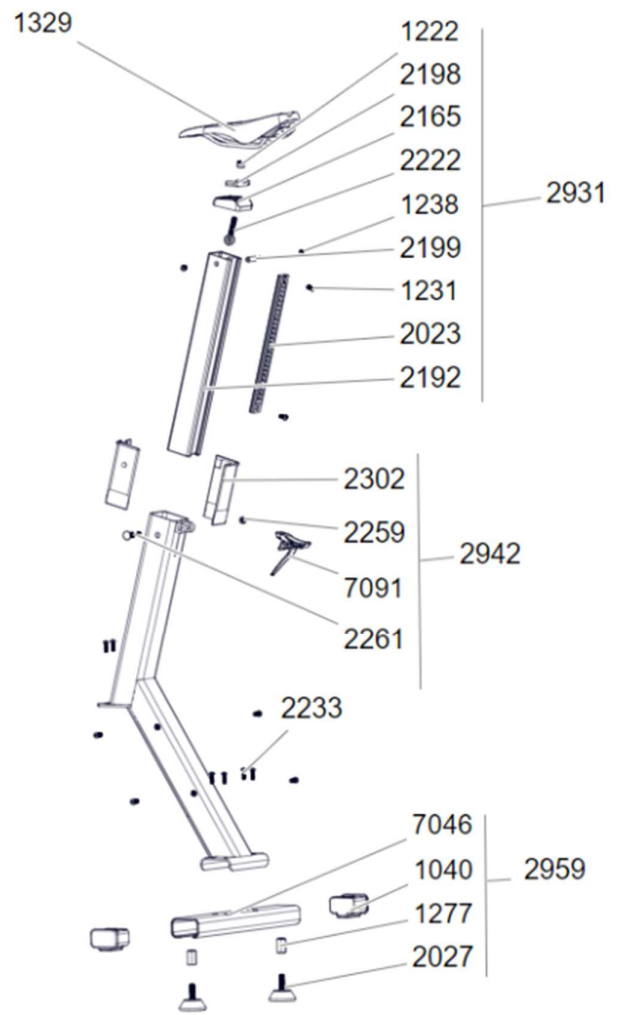
PART No.	NAME	QTY
232	R8 BEARING	1
327	1/4-20 SS NUT	4
1010	BEARING COVER	1
1013	BEARING CUP	1
1035	PERF FASTENER - SCREW SIDE	1
1036	PERF FASTENER - NUT SIDE	1
1164	PERF	1
1201	1/4-20 X 3/4 BUTTON HEAD SCREW	8
1231	1/4-20 X 1/2 BUTTON HEAD SCREW	6
1232	1/4 FENDER WASHER	2
1235	1/4-20 SS HEX NYLON INSERT LOCKNUT	2
1247	1/4-20 X 1 BUTTON HEAD SCREW	2
1255	1/4-20 X 1-1/2 BUTTON HEAD SCREW	1
1270	3/8-16 SS NUT	2
1274	#6-32 x 2 PHILLIPS PAN HEAD MACHINE SCREW	1
1275	#6-32 HEX NUT	1
1276	10-24 X 3 SS PHILLIPS HEAD PAN SCREW FULL THREAD	4
1289	1/4-20 NTE THIN SS NYLOCK NUT	5
1297	1/4-20 X 5/8 BUTTON HEAD SCREW	3
1327	RIGHT PEDAL	1
1328	LEFT PEDAL	1
1912	PERF ASSEMBLY	1
2011	FLYWHEEL REAR COVER	1
2029	GENERATOR COVER	1
2030	STOMP PAD	1
2276	M8 X 25 mm SOCKET HEAD CAP SCREW	4
2280	6-20 X 5/16 ZP THREAD-FORMING FLAT HEAD SCREW	2
2293	1/4-20 X 1/2 FLAT HEAD TORX SCREW	2
2342	FLYWHEEL FAN ASSEMBLY	1
2400	ANGLE SENSOR ASSEMBLY	1
2403	GENERATOR BASE	1
2805	FLYWHEEL AXLE ASSEMBLY	1
2957	FRONT FLYWHEEL ASSEMBLY	1
2958	BOXFRAME ASSEMBLY	1
7012	RIGHT CRANK	1
7013	LEFT CRANK	1
7022	WIRE CLIP	1
7027	CRANK BEARING ASSEMBLY	2
7030	CRANK WASHER	2



PART No.	NAME	QTY
1109	CRANK AXLE PULLEY	1
1199	CRANK AXLE	1
1231	1/4-20 X 1/2 BUTTON HEAD SCREW	9
1267	6-LOBE T-27 1/4-20 X 3 5/8 THRD BUTTON HEAD SCREW	3
1289	1/4-20 NTE THIN SS NYLOCK NUT	3
1317	SMALL BELT	1
1323	LARGE BELT	1
2150	BOXFRAME BOTTOM	1
2300	STEP PULLEY SPACER	2
2368	SMALL BELT TENSIONER ASSEMBLY	1
2369	LARGE BELT TENSIONER ASSEMBLY	1
2377	STEP PULLEY ASSEMBLY	1
2805	FLYWHEEL AXLE ASSEMBLY	1

**concept 2**  
**BikeERG**

PART No.	NAME	QTY
1040	REAR FOOT PLUG	2
1222	NYLOCK NUT 3/8-16 SS WAXED	1
1231	1/4-20 X 1/2 BUTTON HEAD FASTENER	2
1238	1/4-20 X 3/8 BUTTON HEAD FASTENER	2
1277	HEAVY COUPLING NUT	2
1329	SADDLE	1
2023	RATCHET	1
2027	LEVELING FOOT	2
2165	SEAT MOUNT	1
2192	SEAT POST	2
2198	SEAT CLAMP	1
2199	SEAT MOUNT AXLE	1
2222	SEAT CLAMP EYE BOLT	1
2233	1/4-20 X 3/4 BUTTON HEAD CAP SCREW	10
2259	5/16 LOW PROFILE NYLOCK NUT	1
2261	5/16 X 2 CARRIAGE BOLT	1
2302	SEAT POST SLEEVE	2
2931	SEAT POST ASSEMBLY	1
2942	REAR LEG ASSEMBLY	1
2959	REAR FOOT ASSEMBLY	1
7046	REAR FOOT WITH RIV NUTS	1
7091	REAR PAWL	1



**concept 2**  
**BikeERG**