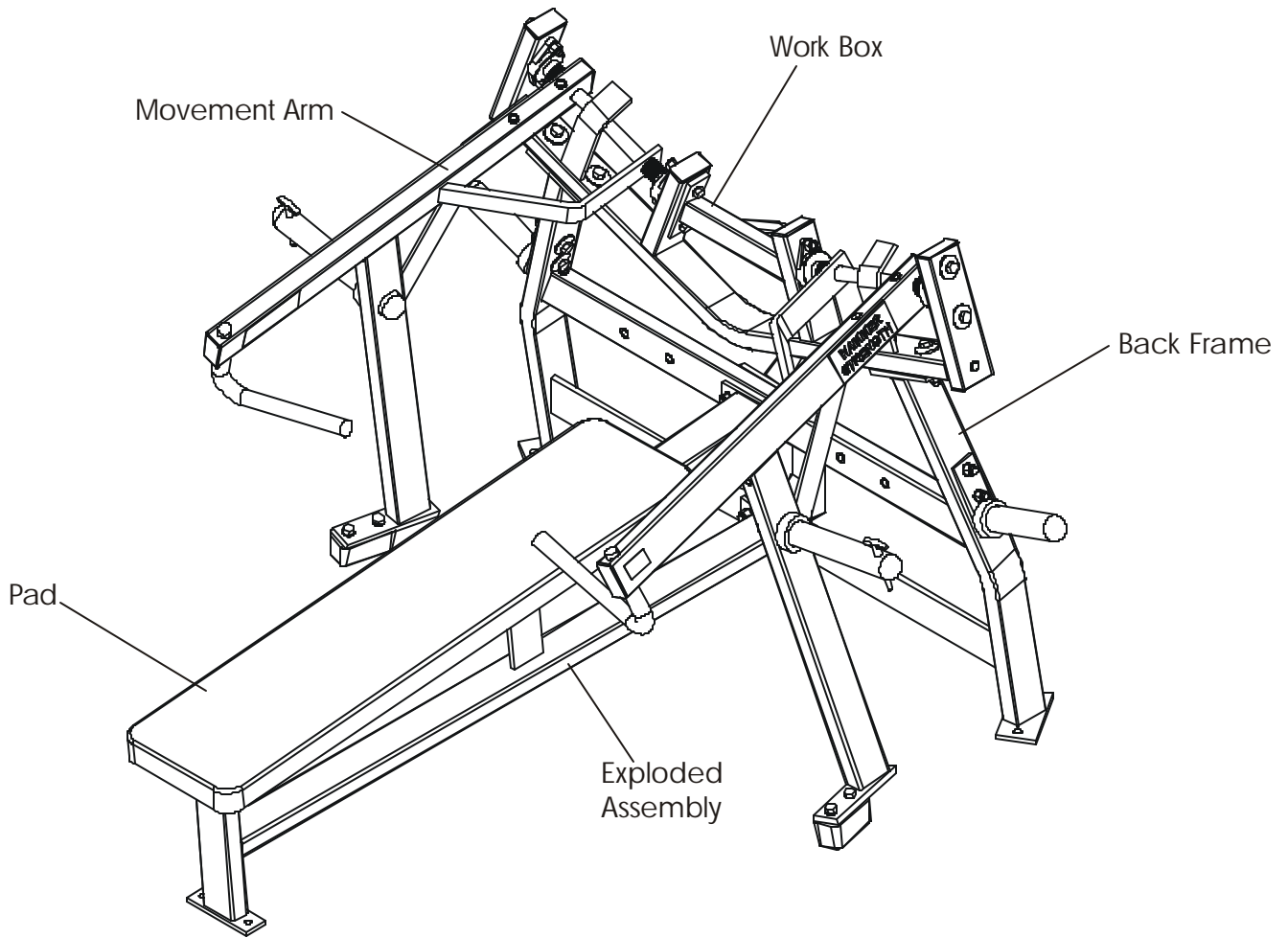


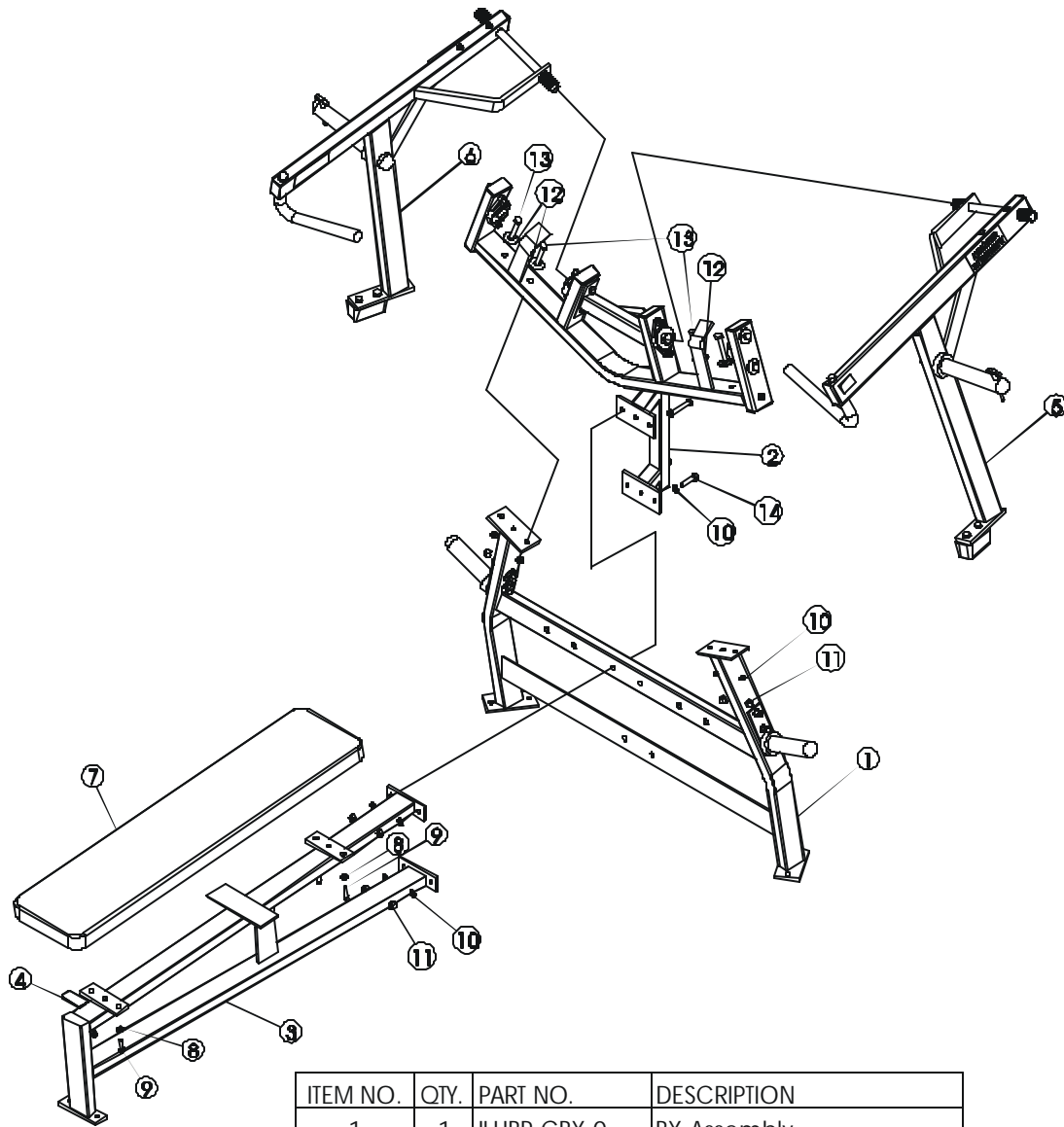
HAMMER STRENGTH EQUIPMENT

ILHBP - ISO Lateral Horizontal Bench Press Rev. A



HAMMER STRENGTH EQUIPMENT

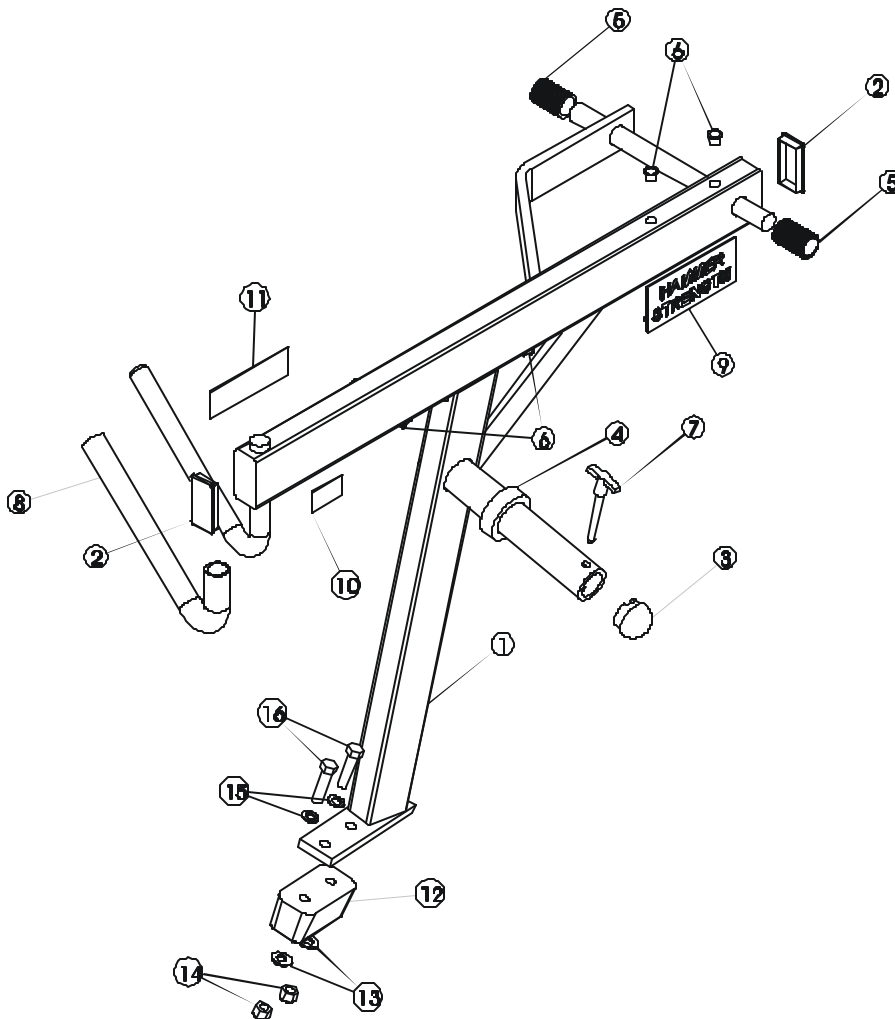
ILHBP - Exploded Assembly



ITEM NO.	QTY.	PART NO.	DESCRIPTION
1	1	ILHBP-CBX-0	BX Assembly
2	1	ILHBP-CTX-0	Top Frame Assembly
3	1	ILHBP-ST-0	Seat Frame
4	1	H-PEND3	1 1/2 X 3 End Cap
5	1	ILHBP-CMAL-0	Left Marm Assembly
6	1	ILHBP-CMAR-0	Right Marm Assembly
7	1	U48_37	Standard 48" Pad
8	4	WASH.375SAE	3/8" SAE Flat Washer
9	4	HHB.375X1.5	3/8 X 1 1/2 Bolt
10	12	WASH.5STAR	1/2" Internal Lock Washer
11	8	NUT.5LOCK	1/2" Thick Lock Nut
12	4	H-BACK-WASH	Backing Washer
13	6	HHB.5X3	1/2 X 3 Bolt
14	2	HHB.5X2	1/2 X 2 Bolt

HAMMER STRENGTH EQUIPMENT

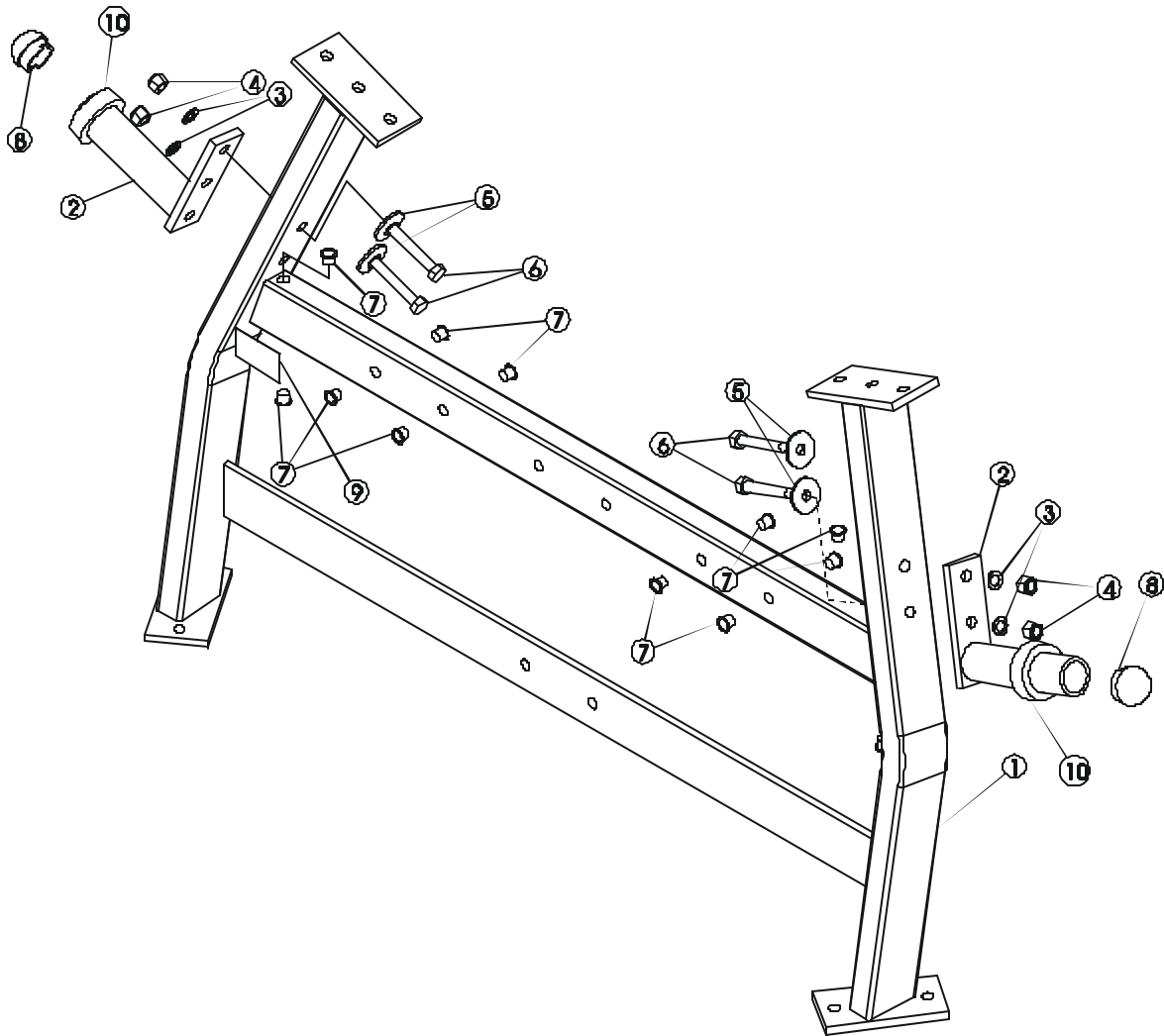
ILHBP - Movement Arm



ITEM NO.	QTY	PART NO.	DESCRIPTION
1	1	ILHBP-MAI-0	Right Movement Arm
1	1	ILHBP-MAI-0	Left Movement Arm
2	2	H-PEND3	1 1/2 X 3 End Cap
3	2	H-BENDCAP	Bulb Cap
4	1	H-RUBRNC	VM5 Ring
5	2	ACCORDIAN	Shaft Guard
6	6	H-HP.L.G	9/16" Hole Plug
7	1	SELECTORPIN	Selector Pin
8	1	H-GRIP(LIIBP.A30)	HandGrip
9	1	H-NAMEPLATE	Name Plate
10	1	STAY CLEAR	Stay Clear Decal
11	1	ISO HORIZONTAL BENCH PRESS	Product Decal
12	1	H-SUM2-M-0	VM2 Medium
13	2	WASH.5SAE	1/2" SAE Flat Washer
14	2	NUT5LOCK	1/2" Thick Lock Nut
15	2	WASH.5STAR	1/2" Internal Lock Washer
16	2	H-IB.SX2	1/2 X 2 Bolt

HAMMER STRENGTH EQUIPMENT

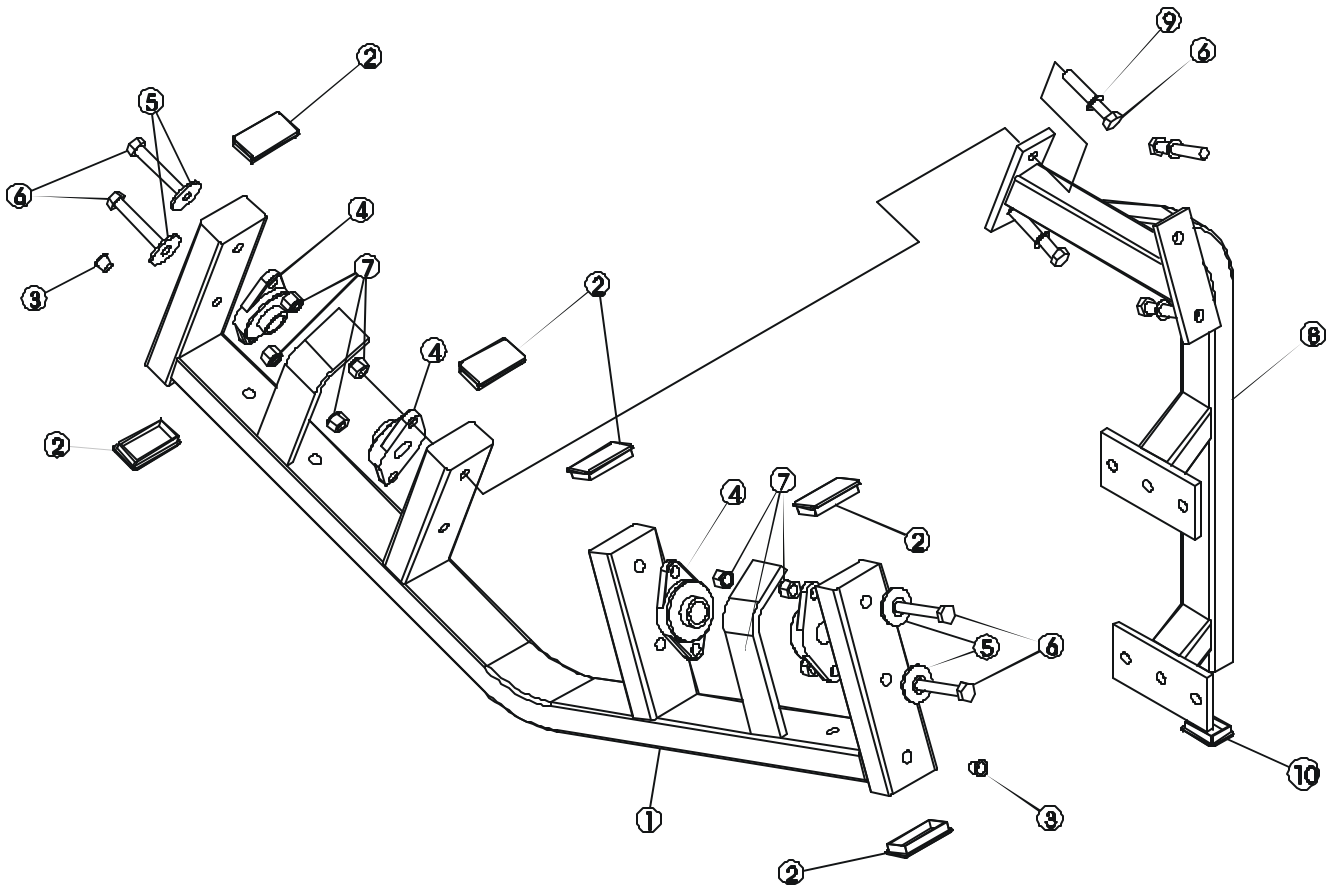
ILHBP - Back Frame



ITEM NO.	QTY.	PART NO.	DESCRIPTION
1	1	ILHBP-BX-0	Back Frame
2	2	ILHBP-ETC2-0	Weight Horn
3	4	WASH.5STAR	1/2" Internal Lock Washer
4	4	NUT.5LOCK	1/2" Thick Lock Nut
5	4	H-BACK-WASH	Backing Washer
6	4	HHB.5X3	1/2 X 3 Bolt
7	12	H-HPLUG	9/16" Hole Plug
8	2	H-BENDCAP	Bullet Cap
9	1	PATENT	Patent Decal
10	2	H-RUBRNG	MM5 Ring

HAMMER STRENGTH EQUIPMENT

ILHBP - Work Box



ITEM NO.	QTY.	PART NO.	DESCRIPTION
1	1	ILHBP-TX-0	Workbox
2	6	H-PEND3	1 1/2 X 3 End Cap
3	2	H-HPLUG	9/16" Hole Plug
4	4	H-BEAR-SML	Small Bearing
5	4	H-BACK-WASH	Backing Washer
6	8	HHB.5X3	1/2 X 3 Bolt
7	8	NUT.5LOCK	1/2" Thick Lock Nut
8	1	ILHBP-ETC-0	Rear Brace
9	4	WASH.5STAR	1/2" Internal Lock Washer
10	1	H-PEND2	1 1/2 X 2 Endcap