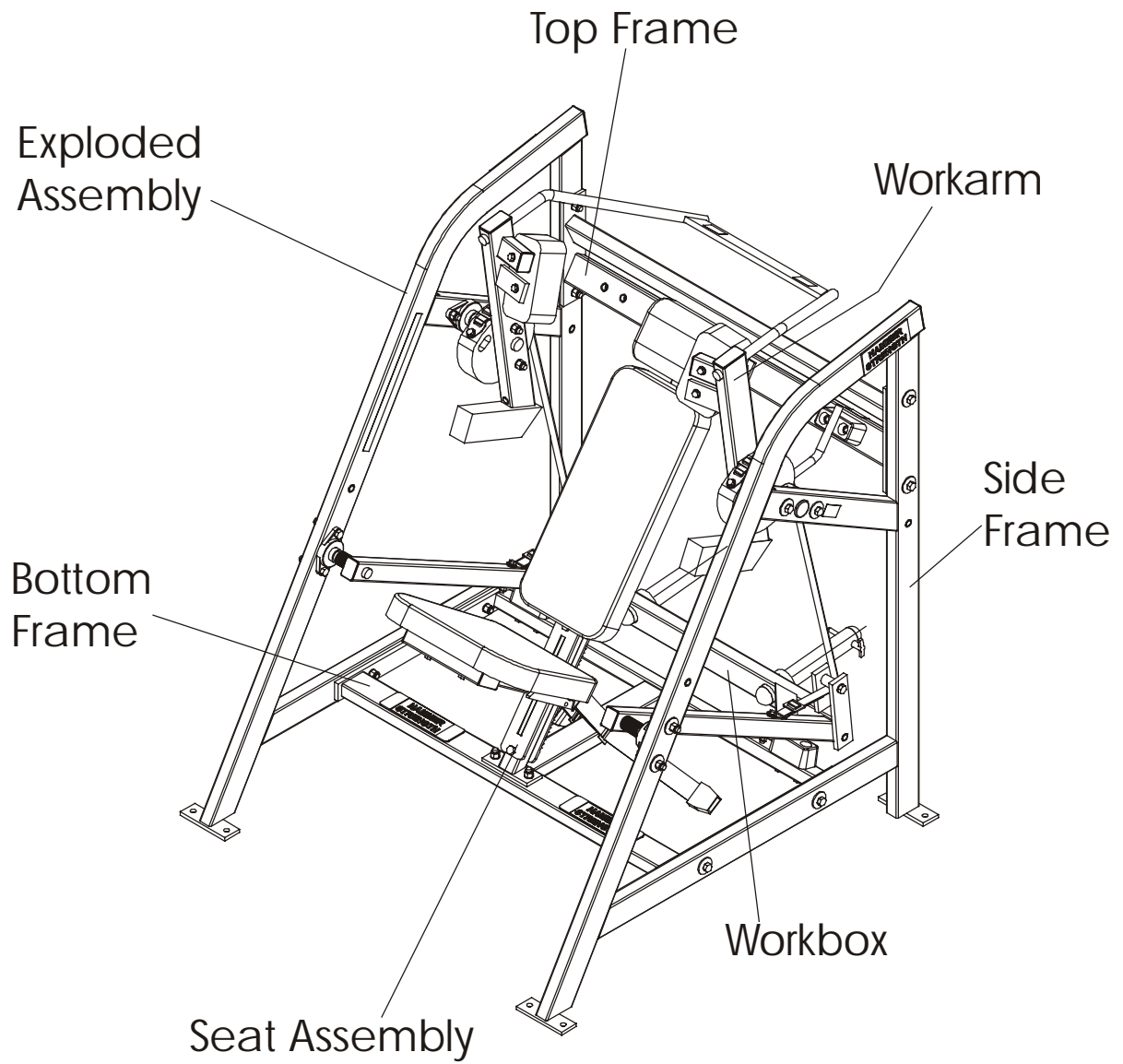


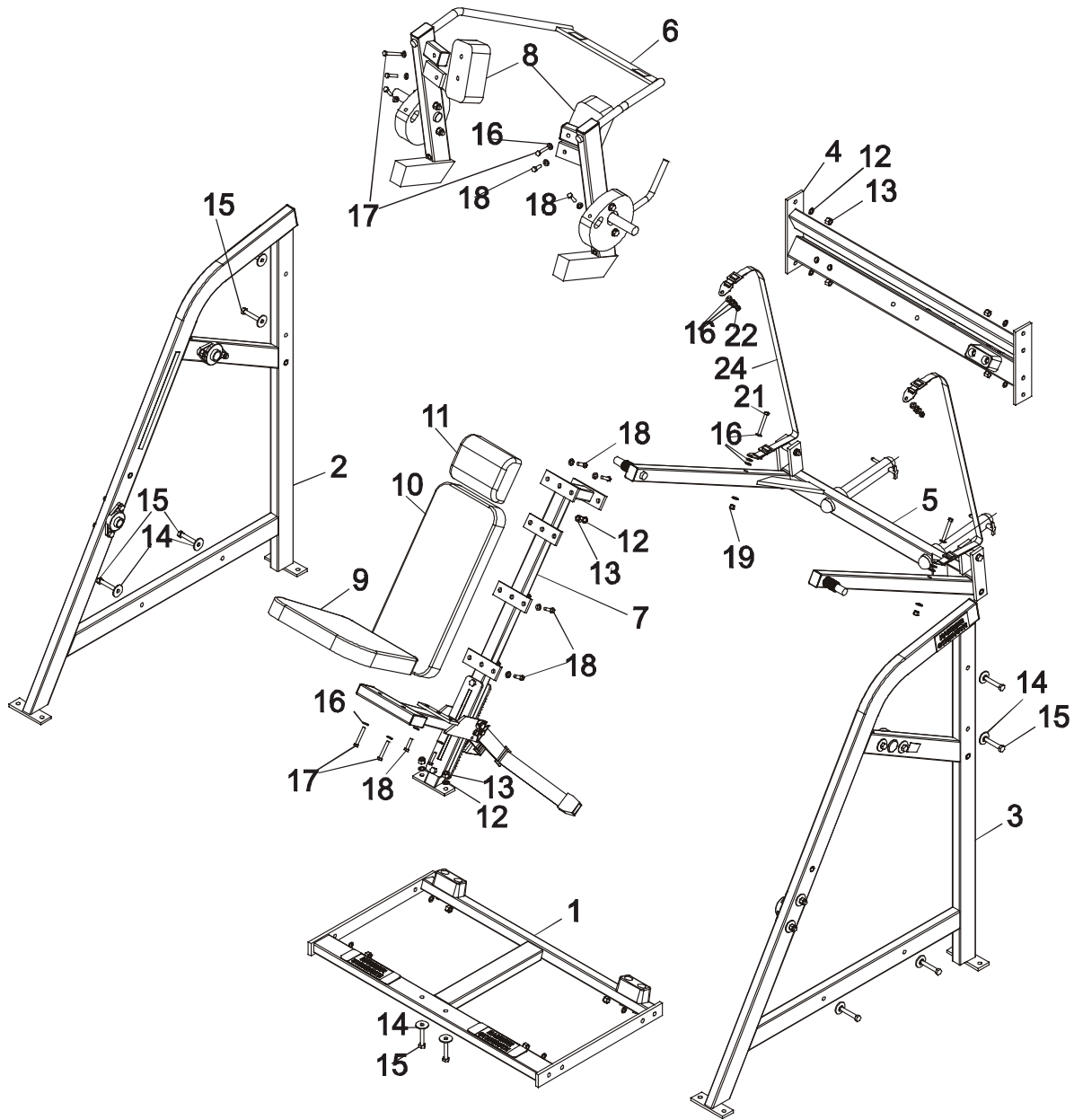
HAMMER STRENGTH EQUIPMENT

PLPO - Plate Pullover Assembly



HAMMER STRENGTH EQUIPMENT

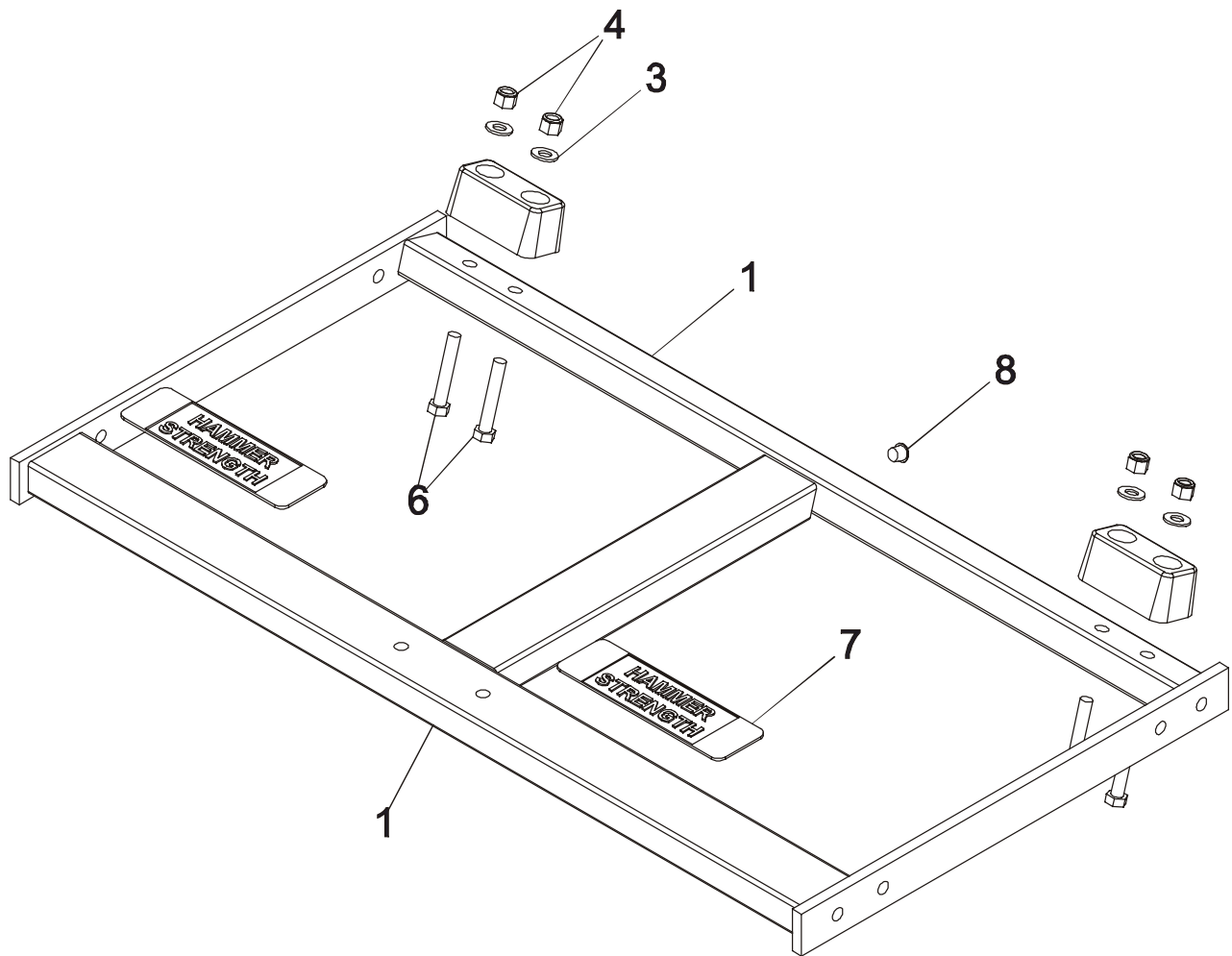
PLPO – Exploded Assembly



ITEM NO.	QTY.	PART NO.	DESCRIPTION	ITEM NO.	QTY.	PART NO.	DESCRIPTION
1	1	PLPO-CBX-0	BOTTOM FRAME ASM	13	12	NUT.5LOCK	1/2" Thick Lock Nut
2	1	PLPO-CSFR-0	R. Side Frm. Assembly	14	12	H-BACK-WASH	Backing Washer
3	1	PLPO-CSFL-0	L. Side Frm. Assembly	15	12	HHB.5X3	1/2 X 3 Bolt
4	1	PLPO-CTX-0	Top Frame Asm	16	28	WASH.375SAE	3/8" SAE Flat Washer
5	1	PLPO-CWB-0	Workbox	17	4	HHB.375X2.5	3/8 X 2 1/2 Bolt
6	1	PLPO-CMA-0	Movement Arm	18	12	HHB.375X1.5	3/8 X 1 1/2 Bolt
7	1	PLPO-CST-0	Seat Frame Asm.	19	2	NUT.375LOCK	3/8" Thick Lock Nut
8	2	U-ILPO		20	4	BELT ATTACH	
9	1	U16-11	Standard 16" Pad	21	2	HHB.375X3	3/8 X 3 Bolt
10	1	U24-10	Standard 24" Pad	22	2	NUT.375JAMLOCK	3/8" Thick Jam Lock Nut
11	1	U8-4.5	Standard 8" Pad	23	4	BELT ADJUST	
12	14	WASH.5STAR	1/2" Internal Lock Washer	24	2	PLPO-STRAP	

HAMMER STRENGTH EQUIPMENT

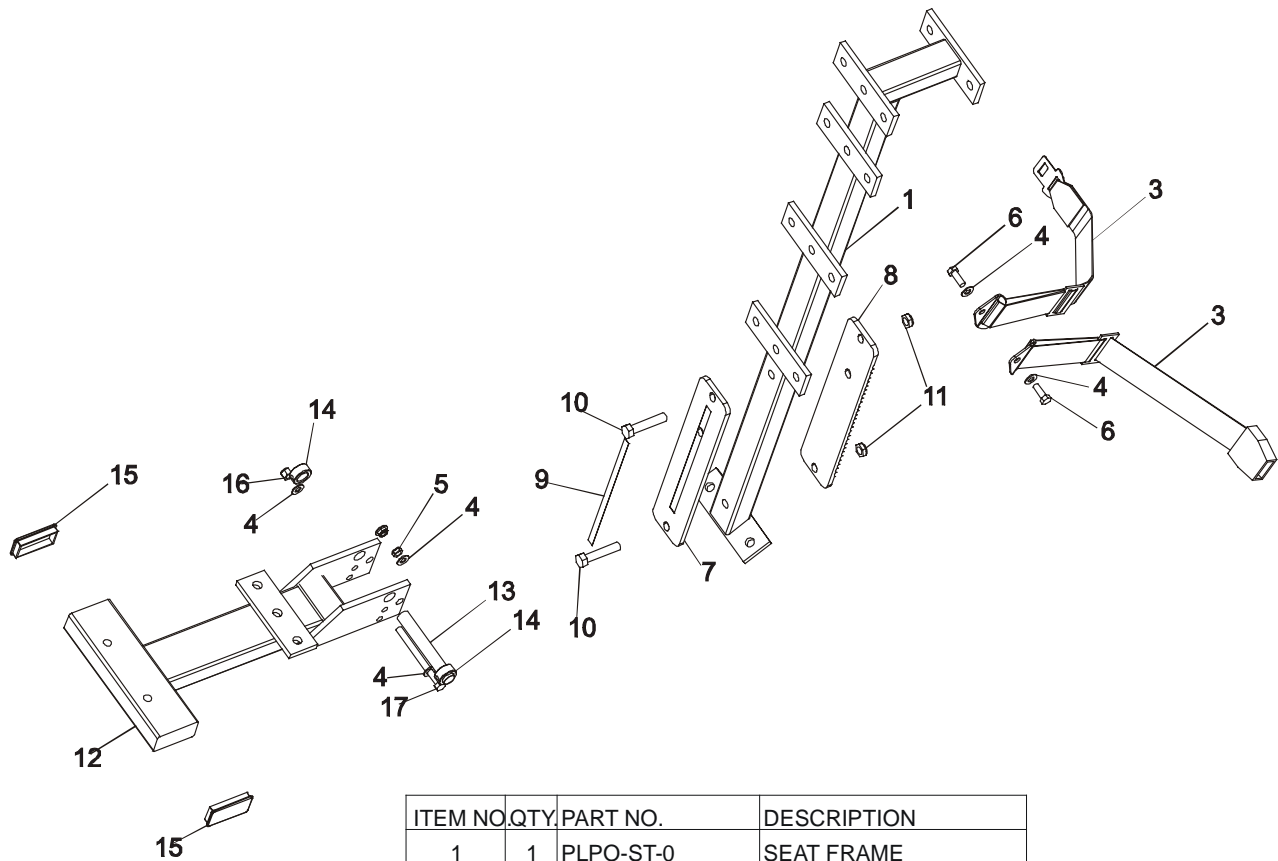
PLPO – Bottom Frame



ITEM NO	QTY.	PART NO.	DESCRIPTION
1	1	PLPO-BX-0	Bottom Frame
2	2	H-BUMP-MED	MM2 Medium
3	4	WASH.5SAE	1/2" SAE Flat Washer
4	4	NUT.5LOCK	1/2" Thick Lock Nut
5	4	WASH.5STAR	1/2" Internal Lock Washer
6	4	HHB.5X3	1/2 X 3 Bolt
7	2	H-NONSKID3	2 5/8 X 9 Nonskid
8	1	H-HPLUG(REG)	Hole Plug

HAMMER STRENGTH EQUIPMENT

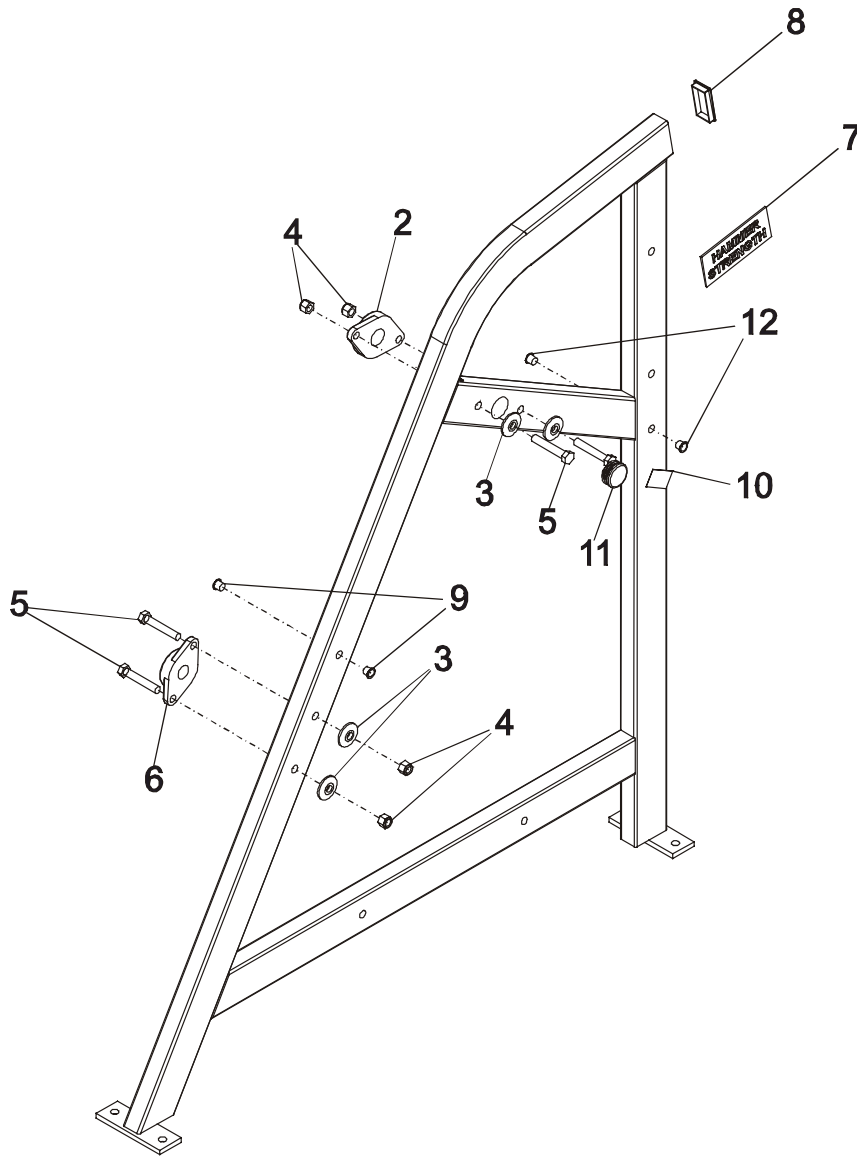
PLPO – Seat Assembly



ITEM NO.	QTY.	PART NO.	DESCRIPTION
1	1	PLPO-ST-0	SEAT FRAME
2	1	SERIAL NUMBER	Serial Number
3	1	SEATBELT-ASSEM	Seatbelt, Complete
4	6	WASH.375SAE	3/8" SAE Flat Washer
5	2	NUT.375JAMLOCK	3/8" Thick Jam Lock Nut
6	2	HHB.375X1	3/8 X 1 Bolt
7	1	H-SEATRCKS	Seatrack Front
8	1	H-SEATRCKS-RIB	Seatrack Back
9	1	SEAT NUMBER	Seat Adj. Number
10	2	HHB.5X2.5	1/2 X 2 1/2 Bolt
11	2	NUT.5JAMLOCK	1/2" Thin Lock Nut
12	1	STD-ST2	Standard Seat #2
13	1	STshft	Seat Shaft
14	2	H-LCOLLAR75	3/4" Lock Collar
15	2	H-PEND3	1 1/2 X 3 End Cap
16	1	NUT.375LOCK	3/8" Thick Lock Nut
17	1	HHB.375X4.5	3/8 X 4.5 Bolt

HAMMER STRENGTH EQUIPMENT

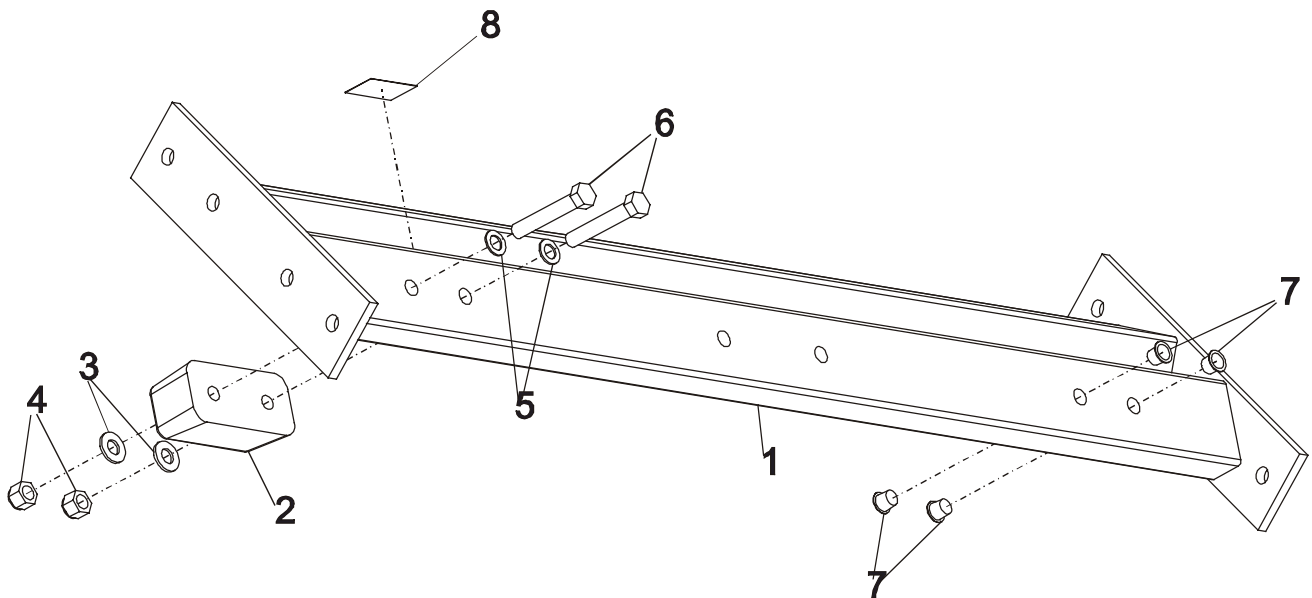
PLPO – Side Frame



ITEM NO	QTY.	PART NO.	DESCRIPTION
1	1	PLPO-SF-0	Side-Frame Wldnt
2	1	H-BEAR-LGE	1 1/4" Flange Bearing
3	4	H-BACK-WASH	Backing Washer
4	4	NUT.5LOCK	1/2" Thick Lock Nut
5	4	HHB.5X3	1/2 X 3 Bolt
6	1	H-BEAR-SML	Small Bearing
7	1	H-NAMEPLATE	Name Plate
8	1	H-PEND3	1 1/2 X 3 End Cap
9	3	H-HPLUG	Hole Plug
10	1	STAY CLEAR	Stay Clear Decal
11	1	H-LOCK-PLUG(LARGE)	Hole Plug
12	4	H-HPLUG(REG)	Hole Plug

HAMMER STRENGTH EQUIPMENT

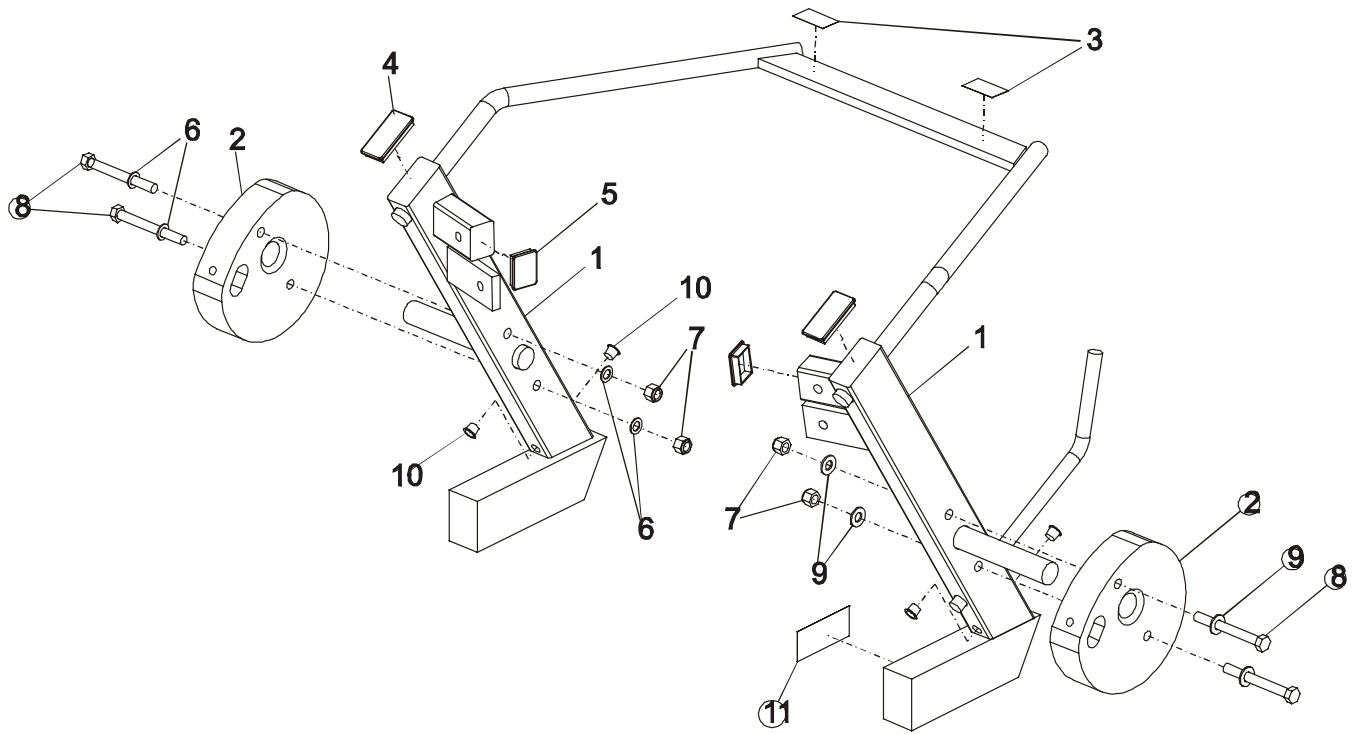
PLPO – Top Frame



ITEM NO.	QTY.	PART NO.	DESCRIPTION
1	1	PLPO-TX-0	TOP FRAME
2	1	H-BUMP-MED	MM2 Medium
3	2	WASH.5SAE	1/2" SAE Flat Washer
4	2	NUT.5LOCK	1/2" Thick Lock Nut
5	2	WASH.5STAR	1/2" Internal Lock Washer
6	2	HHB.5X3	1/2 X 3 Bolt
7	4	H-HPLUG(REG)	Hole Plug
8	1	STAY CLEAR	Stay Clear Decal

HAMMER STRENGTH EQUIPMENT

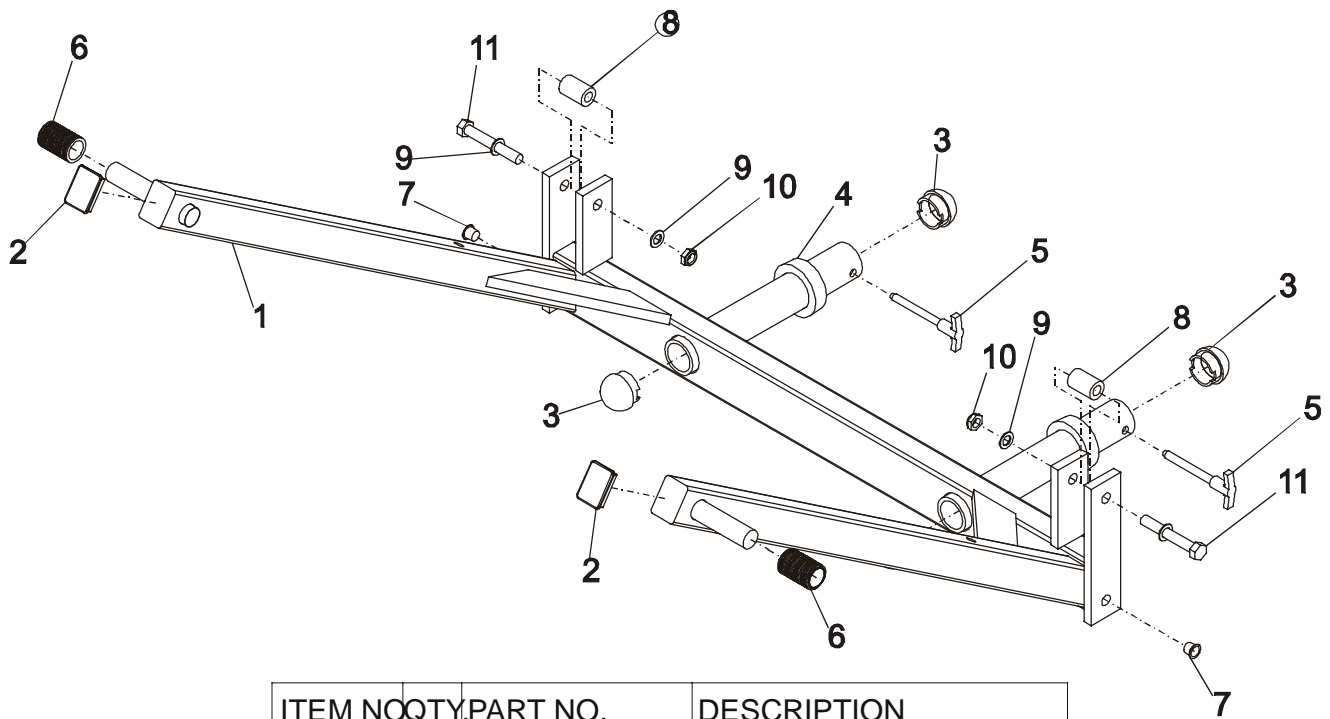
PLPO - Workarm



ITEM NO	QTY.	PART NO.	DESCRIPTION
1	1	PLPO-MA-0	WORKARM
2	2	CAM5	CAM #5
3	2	STAY CLEAR	Stay Clear Decal
4	2	H-PEND3	1 1/2 X 3 End Cap
5	2	H-PEND2	1 1/2 X 2 Endcap
6	4	WASH.5STAR	1/2" Internal Lock Washer
7	4	NUT.5LOCK	1/2" Thick Lock Nut
8	4	HHB.5X4.5	1/2 X 4 1/2 Bolt
9	4	WASH.5SAE	1/2" SAE Flat Washer
10	4	H-HPLUG(REG)	Hole Plug
11	1	WARNING SMALL-HS	Small Warning Hor.

HAMMER STRENGTH EQUIPMENT

PLPO - Workbox



ITEM NO	QTY	PART NO.	DESCRIPTION
1	1	PLPO-WB-0	WORKBOX
2	2	H-PEND2	1 1/2 X 2 Endcap
3	4	H-BENDCAP	Bullet Cap
4	2	H-RUBRNG	MM5 Ring
5	2	SELECTOR PIN-3	SELECTOR PIN 4 INCH
6	2	ACCORDIAN	Shaft Guard
7	2	H-HPLUG(REG)	Hole Plug
8	2	H-CAM-SPACER	
9	4	WASH.5STAR	1/2" Internal Lock Washer
10	2	NUT.5JAMLOCK	1/2" Thin Lock Nut
11	2	HHB.5X3.5	1/2 X 3 1/2 Bolt