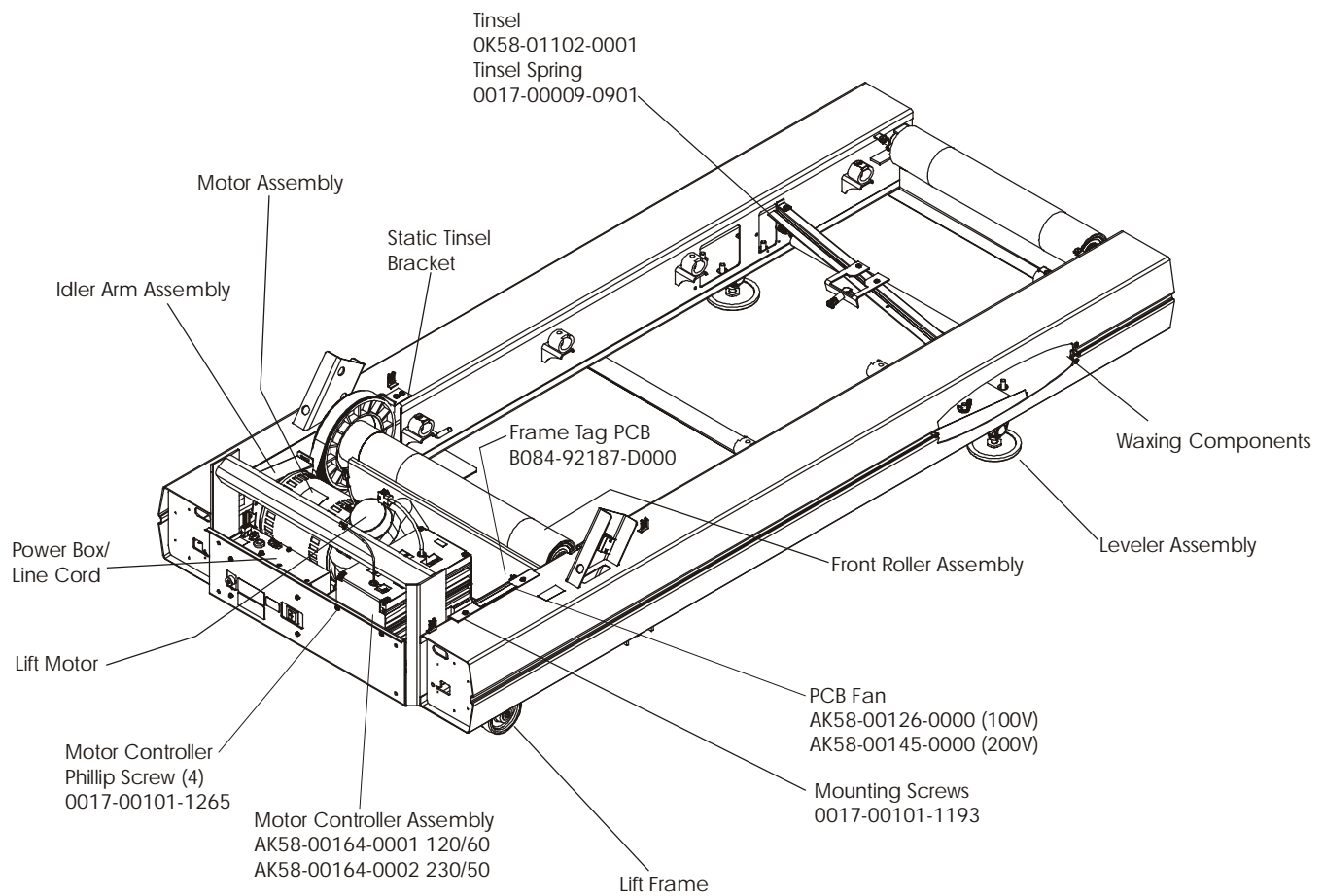


# TR97 Treadmill

## Frame Assembly Components

TR97-0100-03  
S/N HTP100000



# TR97 Treadmill Console (External View)

**TR97-0100-03**  
**S/N HTP100000**

## Console Assembly

AK58-00055-0001 Eng/Met  
AK58-00055-0003 Ger/Met  
AK58-00055-0004 Spn/Met/Eur (120v/60Hz)  
AK58-00055-0005 Spn/Met (230v/50Hz)  
AK58-00055-0006 Jap/Met  
AK58-00055-0007 Frn/Met/Eur (120v/60Hz)  
AK58-00055-0008 Itl/Met  
AK58-00055-0009 Dut/Met  
AK58-00055-0010 Por/Met  
AK58-00055-0011 Frn/Met (230v/50Hz)

Front Console Shell Only  
OK58-01008-0001

Zone Training Overlay  
OK58-01215-0001 Eng/Met  
OK58-01215-0003 Ger/Met  
OK58-01215-0004 Spn/Met/Eur  
OK58-01215-0006 Jap/Met  
OK58-01215-0007 Frn/Met/Eur  
OK58-01215-0008 Itl/Met  
OK58-01215-0009 Dut/Met  
OK58-01215-0010 Por/Met

## Workout Profiles

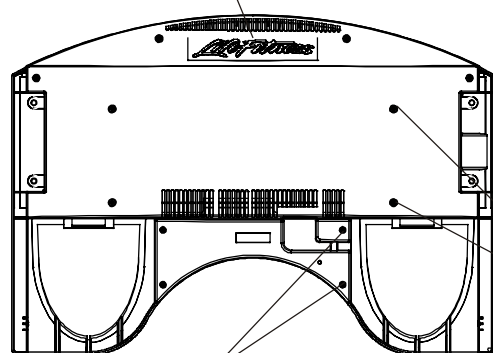
OK58-01216-0001 Eng/Met  
OK58-01216-0003 Ger/Met  
OK58-01216-0004 Spn/Met/Eur  
OK58-01216-0006 Jap/Met  
OK58-01216-0007 Frn/Met/Eur  
OK58-01216-0008 Itl/Met  
OK58-01216-0009 Dut/Met  
OK58-01216-0010 Por/Met

Stop Key w/Tether  
AK58-00091-0000

Stop Switch Assembly  
Gk58-00002-0007

Tray/Switch w/Overlay Assy  
AK58-00061-0001 Eng/Met  
AK58-00061-0003 Ger/Met  
AK58-00061-0004 Spn/Met/Eur  
AK58-00061-0006 Jap/Met  
AK58-00061-0007 Frn/Met/Eur  
AK58-00061-0008 Itl/Met  
AK58-00061-0009 Dut/Met  
AK58-00061-0010 Por/Met

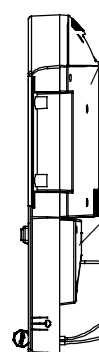
Rear Console Decal  
OK58-01129-0000



Phillips Screw-4  
(8-32x6)  
0017-00101-0776

Phillips Screw-8  
(10-32x8)  
0017-00101-1288

Rear Console  
OK58-01009-0000

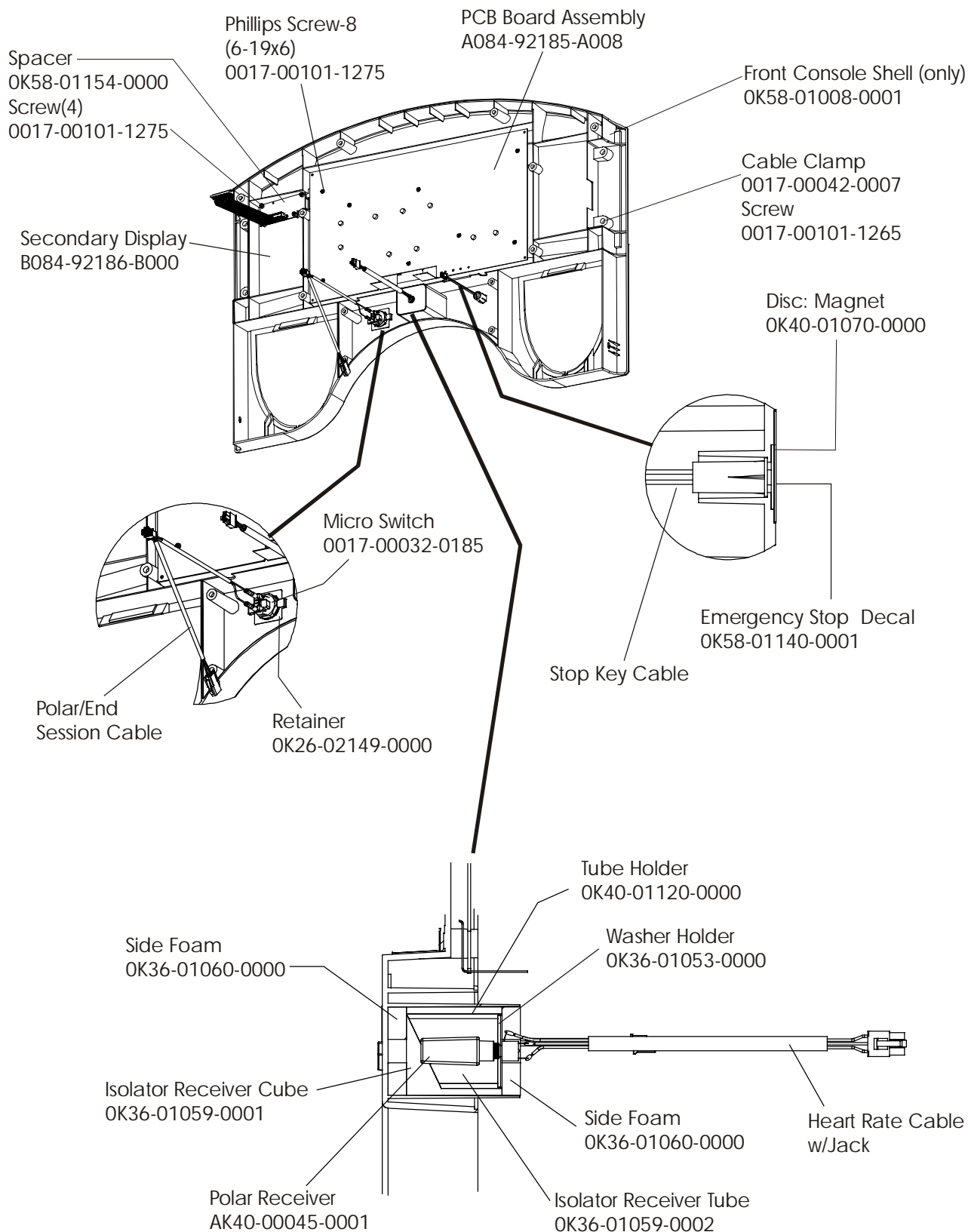


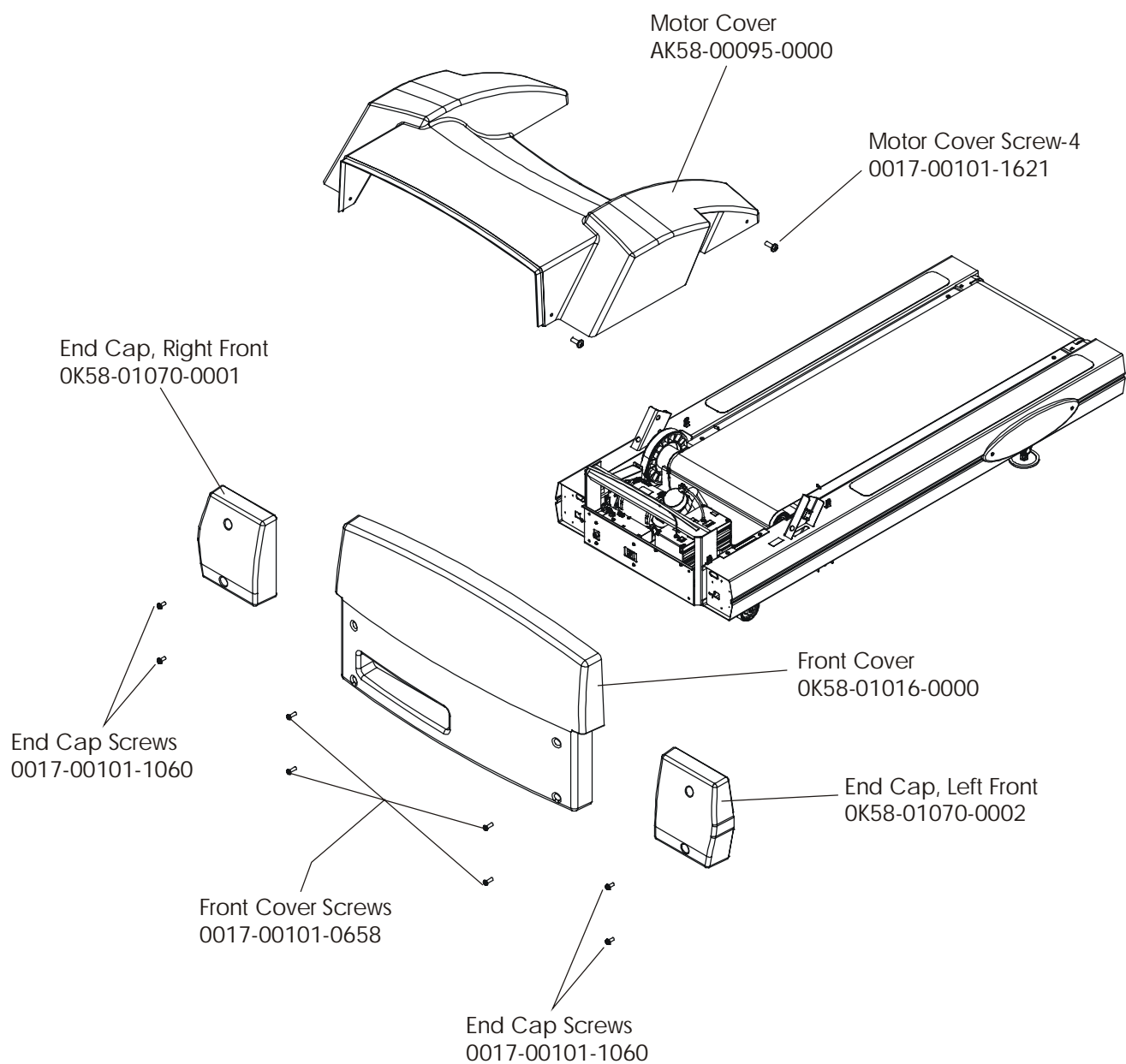
Switch Cover  
w/Tether  
AK58-00096-0000  
Cover Only  
OK58-01087-0000  
Anchor Washer  
OK58-01158-0000

Stop Key w/Tether  
AK58-00091-0000

# TR97 Treadmill Console (Internal View)

**TR97-0100-03**  
**S/N HTP100000**

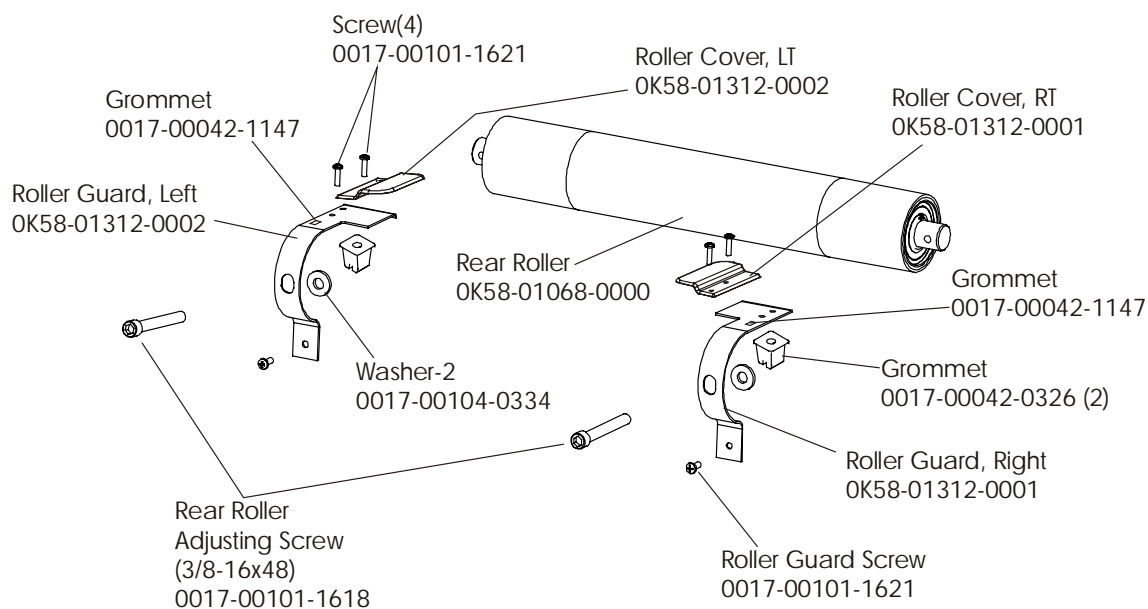
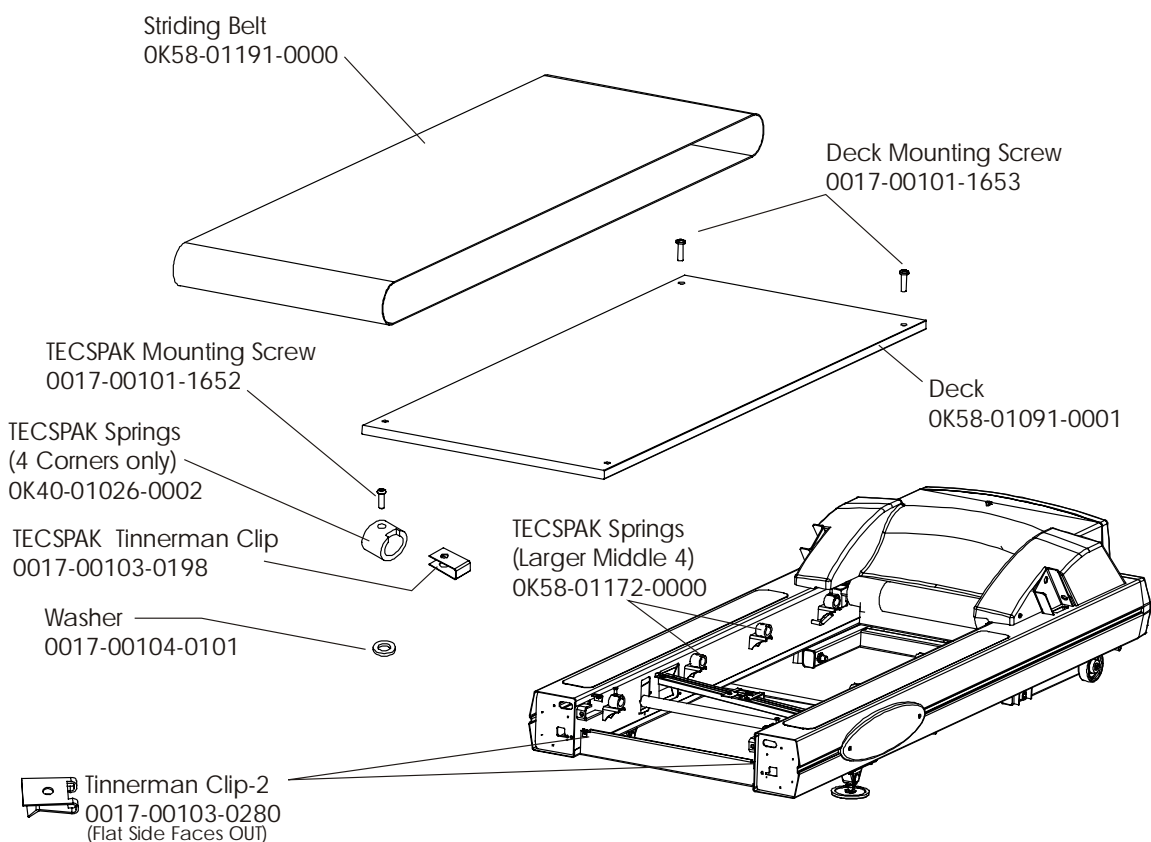




# TR97 Treadmill

## Belt, Deck, Rear Roller

TR97-0100-03  
S/N HTP100000

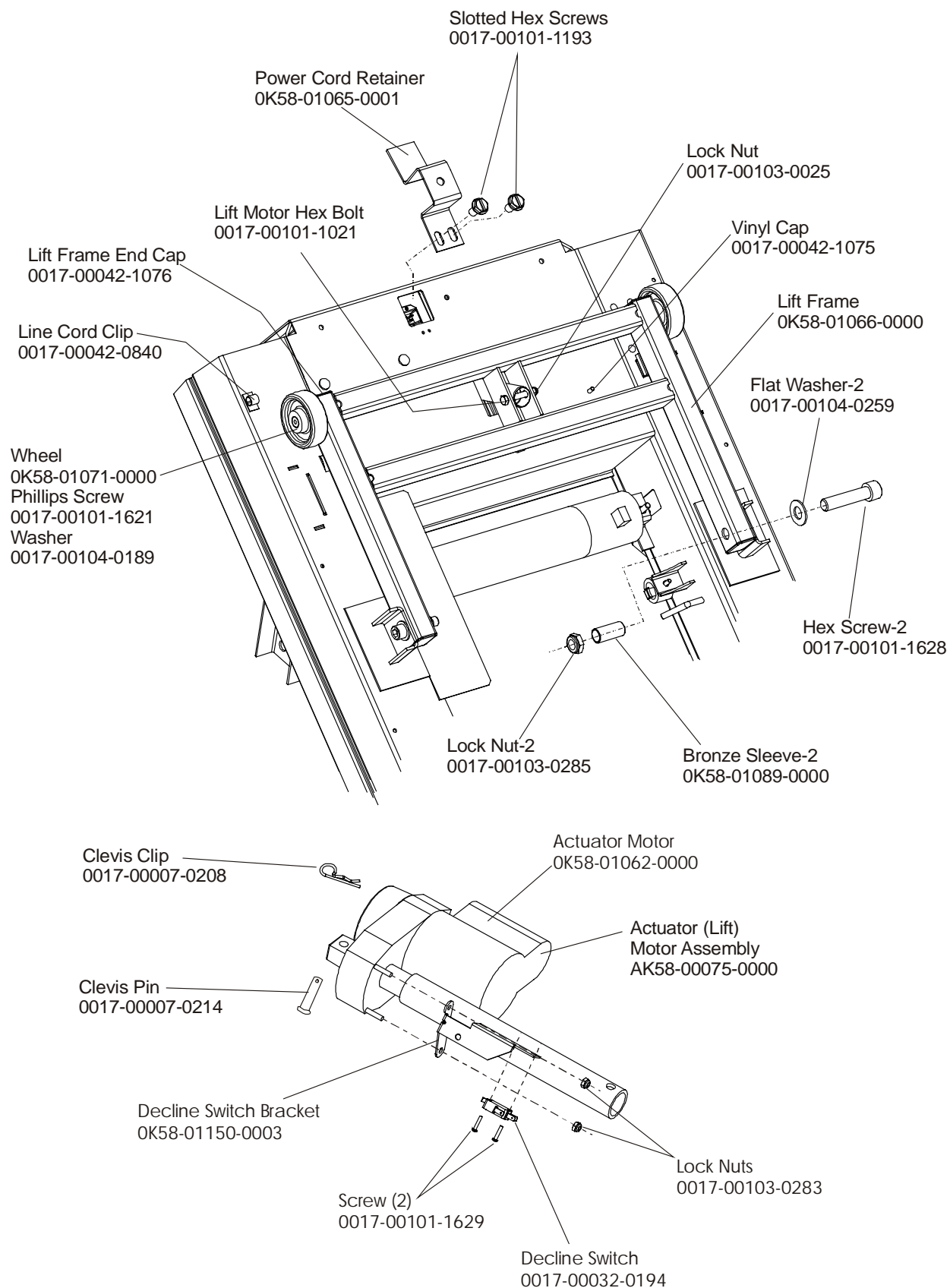


**IMPORTANT:** Components can be ordered separately with Serial Numbers above:  
TR9100 HTN102105-Above, TR9500 HTM105585-Above, and TR9700 HTP100531-Above.  
Use the appropriate Roller Guard Kit: GK58-00002-0056 for TR91/95, and GK58-00002-0057 for Tr97 with  
Serial Numbers: TR9100 HTN102105-Below, TR9500 HTM105585-Below, and TR9700 HTP100531-Below.

# TR97 Treadmill

## Lift Motor and Lift Frame

**TR97-0100-03**  
**S/N HTP100000**

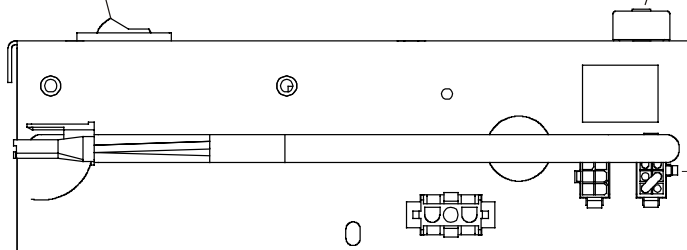


# TR97 Treadmill Power Box Assembly

**TR97-0100-03**  
**S/N HTP100000**

ON/OFF  
Power Switch  
0017-00032-0198

Circuit Breaker 4-AMP  
0017-00003-0950



TOP VIEW

Transformer (EURO Only)  
0017-00101-0162

Phillips Pan  
Head Screw  
(8-32x6)  
0017-00101-0162

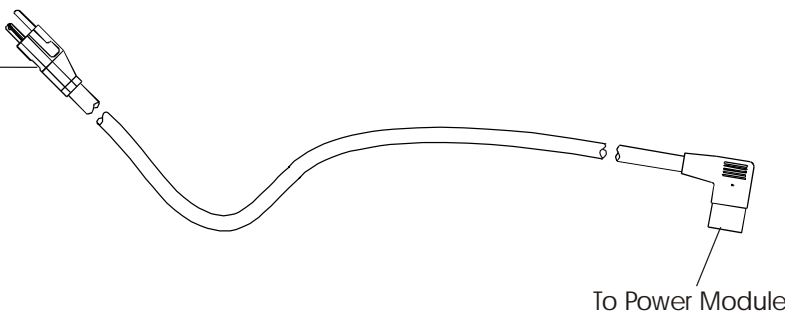
Phillips Pan  
Head Screw  
(8-32x8)  
0017-00101-1182

Transformer Bracket  
OK58-00120-0004

Jumper Line  
AK58-00120-0004 - 240V  
AK58-00120-0003 - 230V  
AK58-00120-0002 - 200V  
AK58-00120-0001 - 100V  
AK58-00120-0000 - 120V

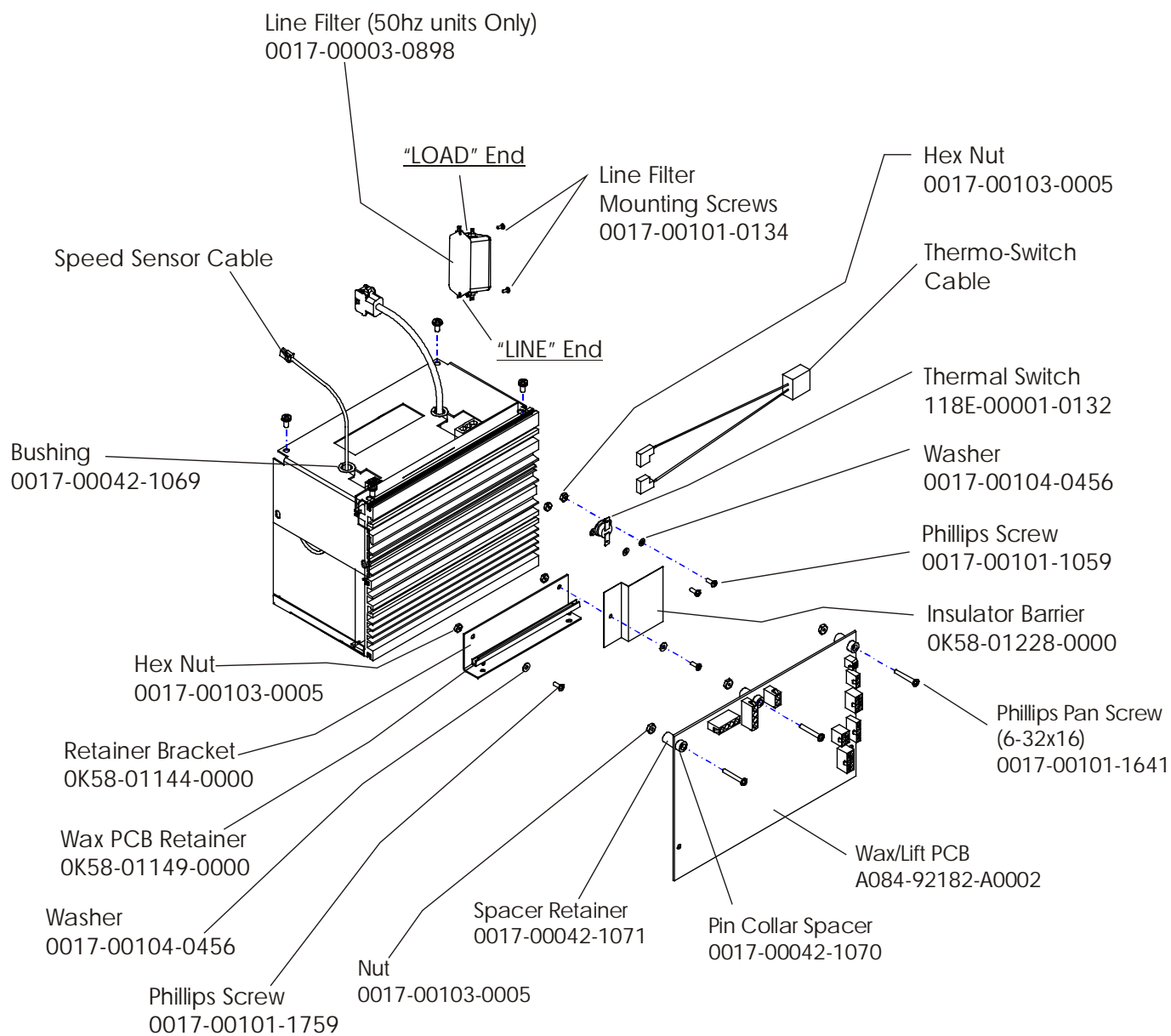
Power Box Assembly  
AK58-00124-0001 - 240V  
AK58-00124-0002 - 220-230V  
AK58-00124-0006 - 200V  
AK58-00124-0005 - 100V  
AK58-00124-0000 - 120V

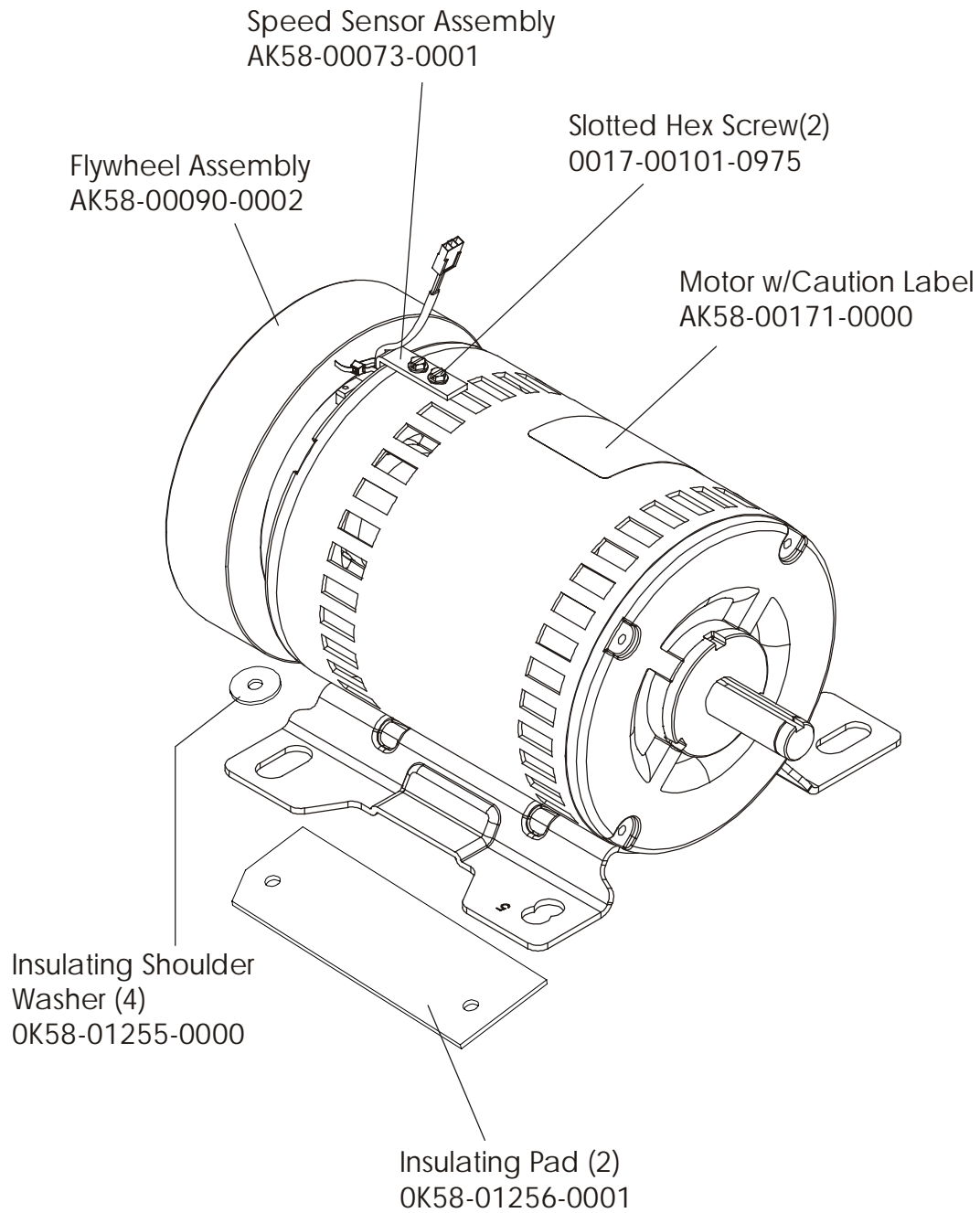
Line Cord  
(Plug End Changes)  
0017-00003-0947 12' 120v Line Cord  
0017-00003-0923 Domestic  
0017-00003-0948 12' 220v Line Cord  
0017-00003-0915 RT Angle Plug  
0017-00003-0781 220v/60Hz  
0017-00003-0696 Continental  
0017-00003-0890 UK

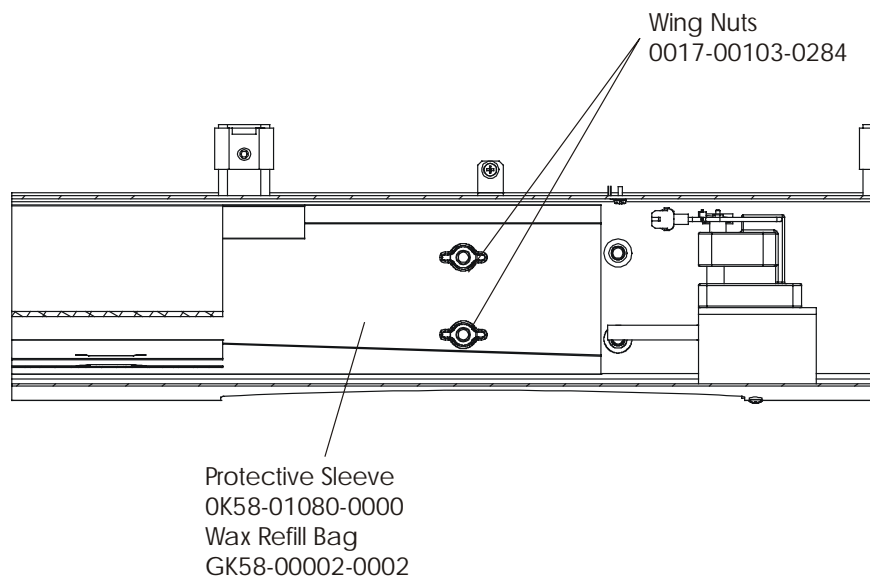
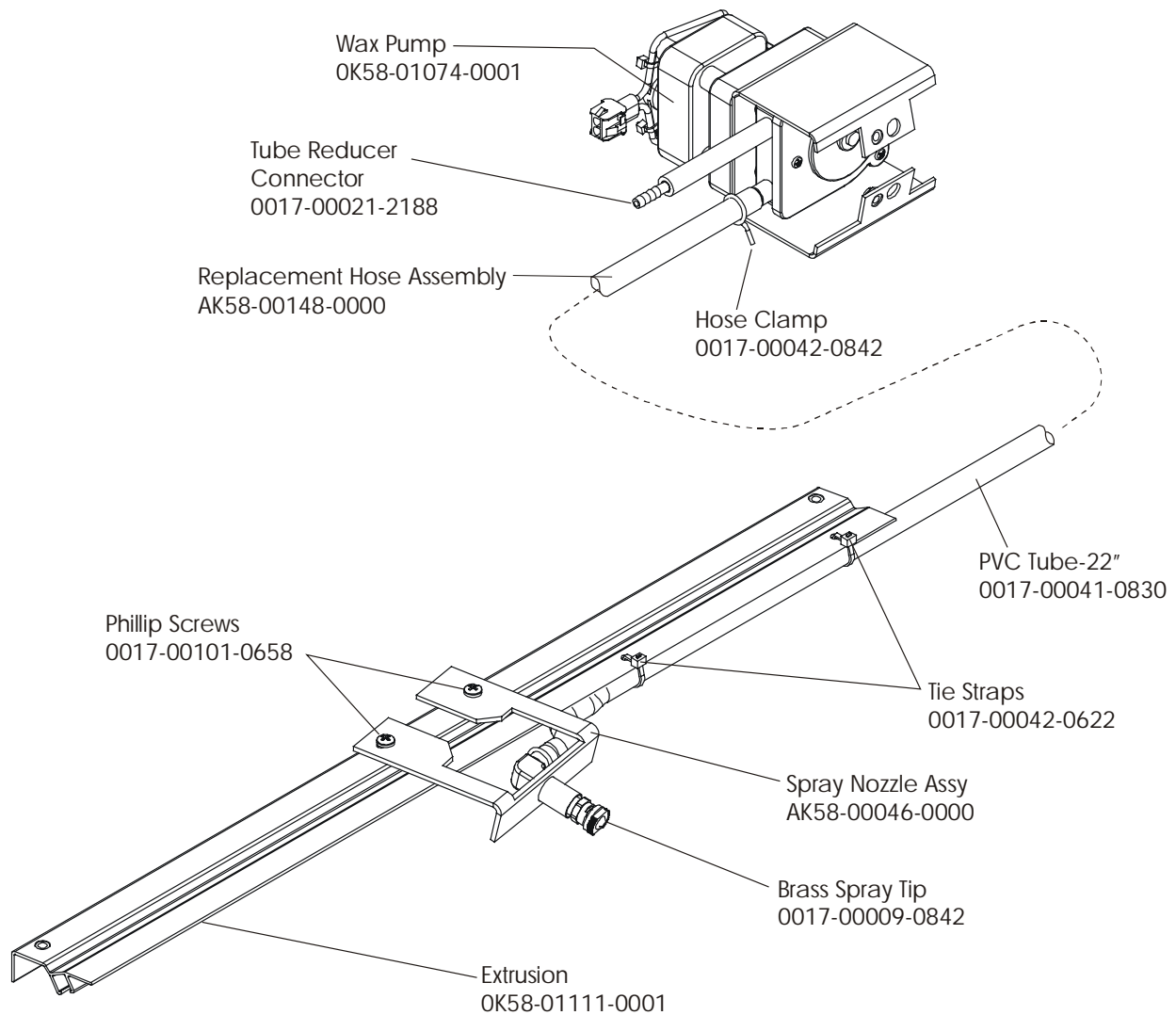


To Power Module



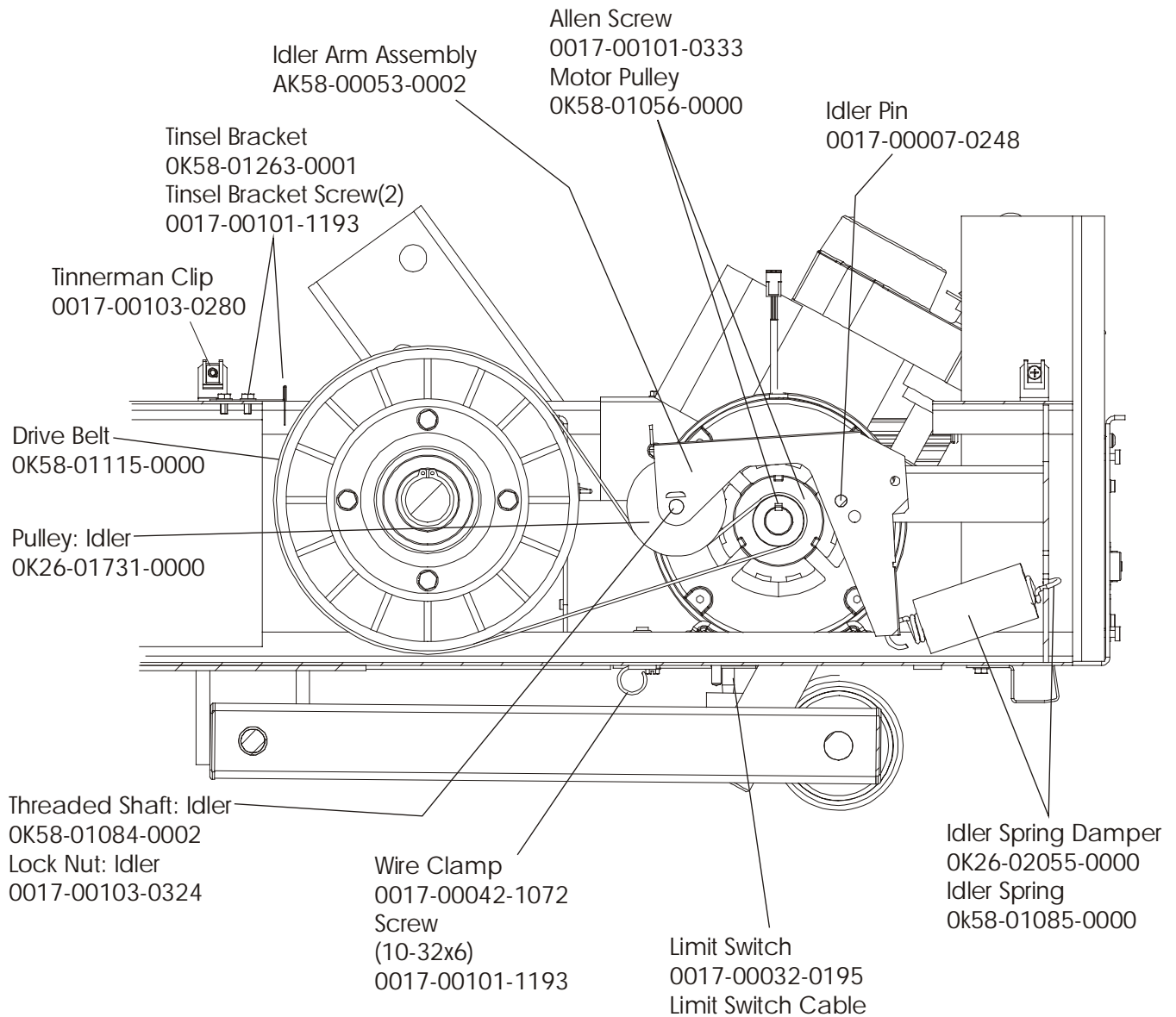






**TR97 Treadmill**  
**Idler Arm Assembly**

**TR97-0100-03**  
**S/N HTP100000**



**TR97 Treadmill**  
**Lever Assembly – AK58-00076-0000**

**TR97-0100-03**  
**S/N HTP100000**

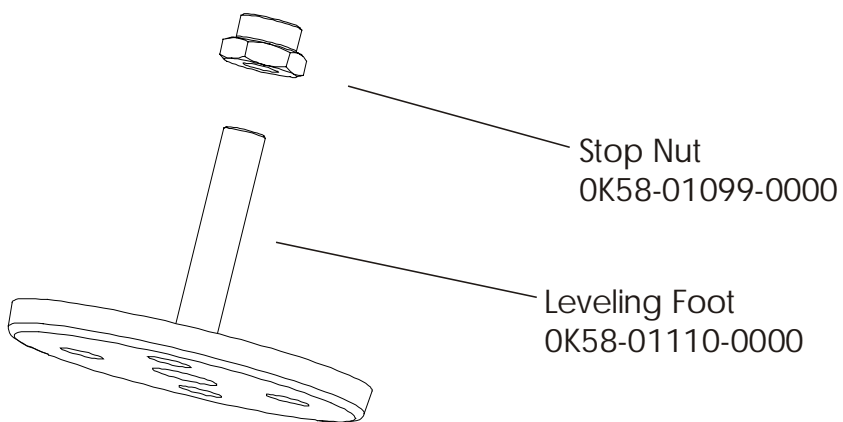
Flat Washer-4  
0017-00104-0190

Lock Washer-4  
0017-00104-0333

Hex Nut-4  
(8-18x10)  
0017-00101-1253

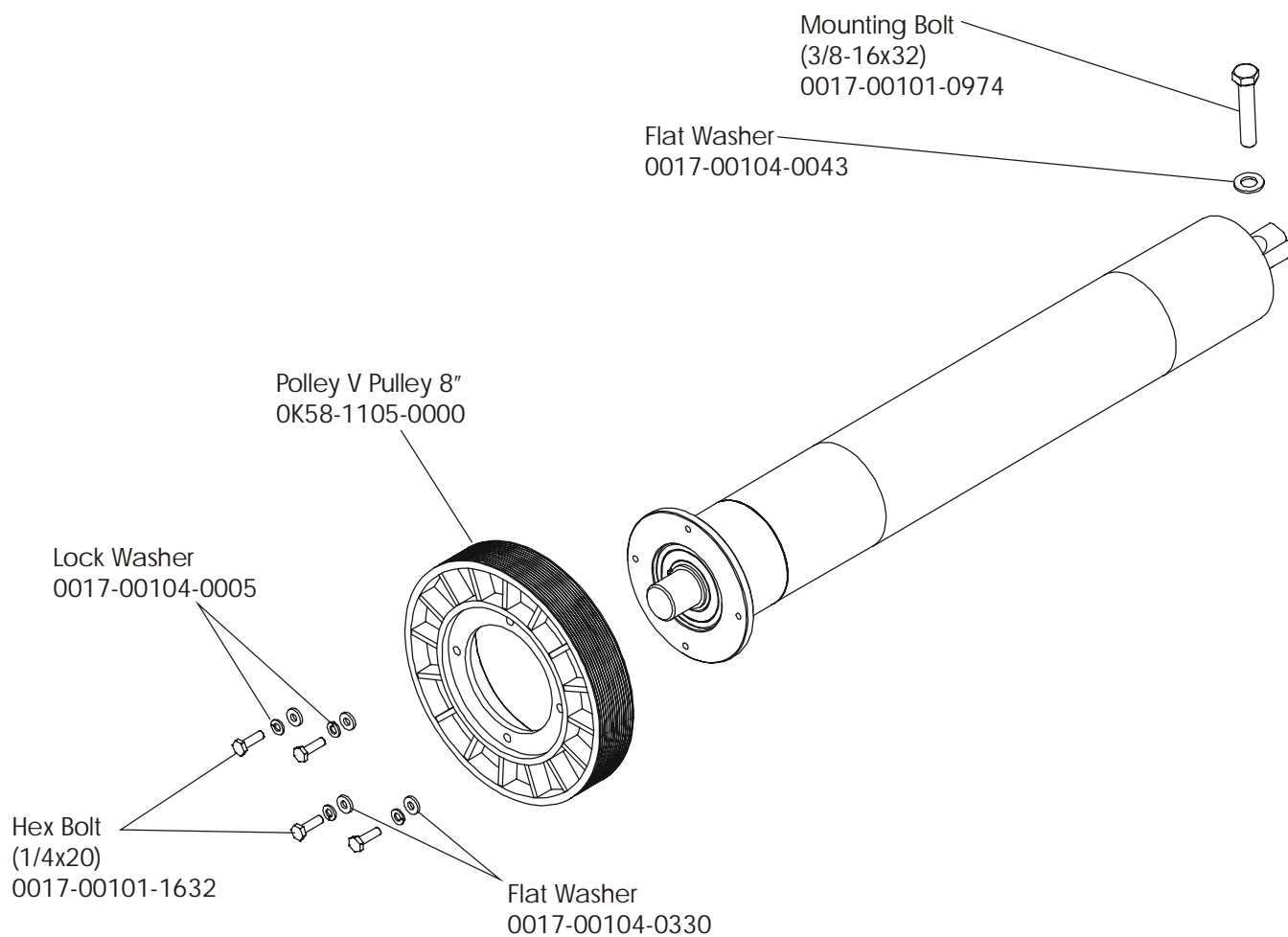
Assembly Leveler & Bushing  
AK58-00089-0000

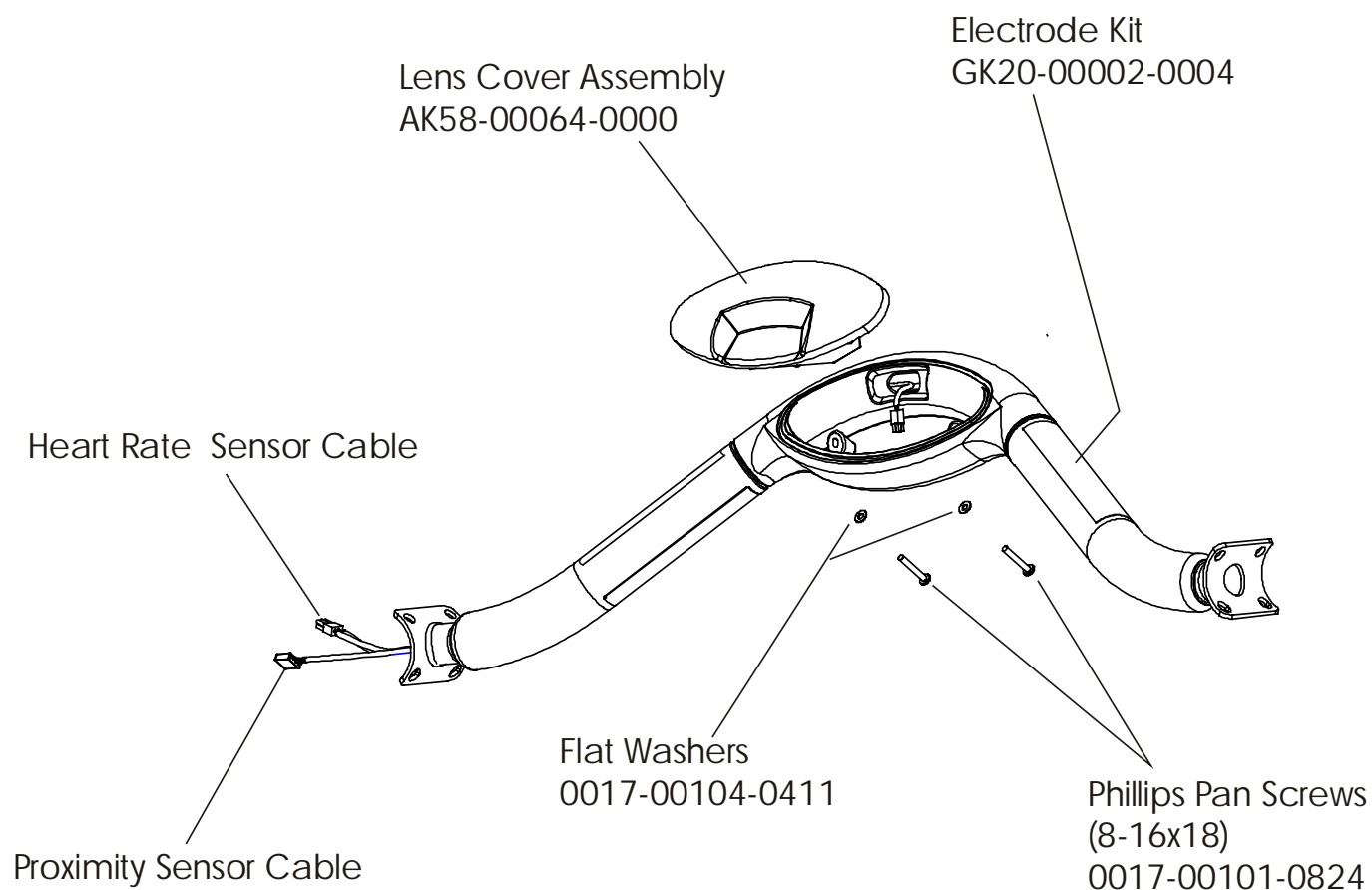
Pivot Pin  
OK58-01098-0001



**TR97 Treadmill**  
**Front Roller Assembly – AK58-00067-0000**

**TR97-0100-03**  
**S/N HTP100000**

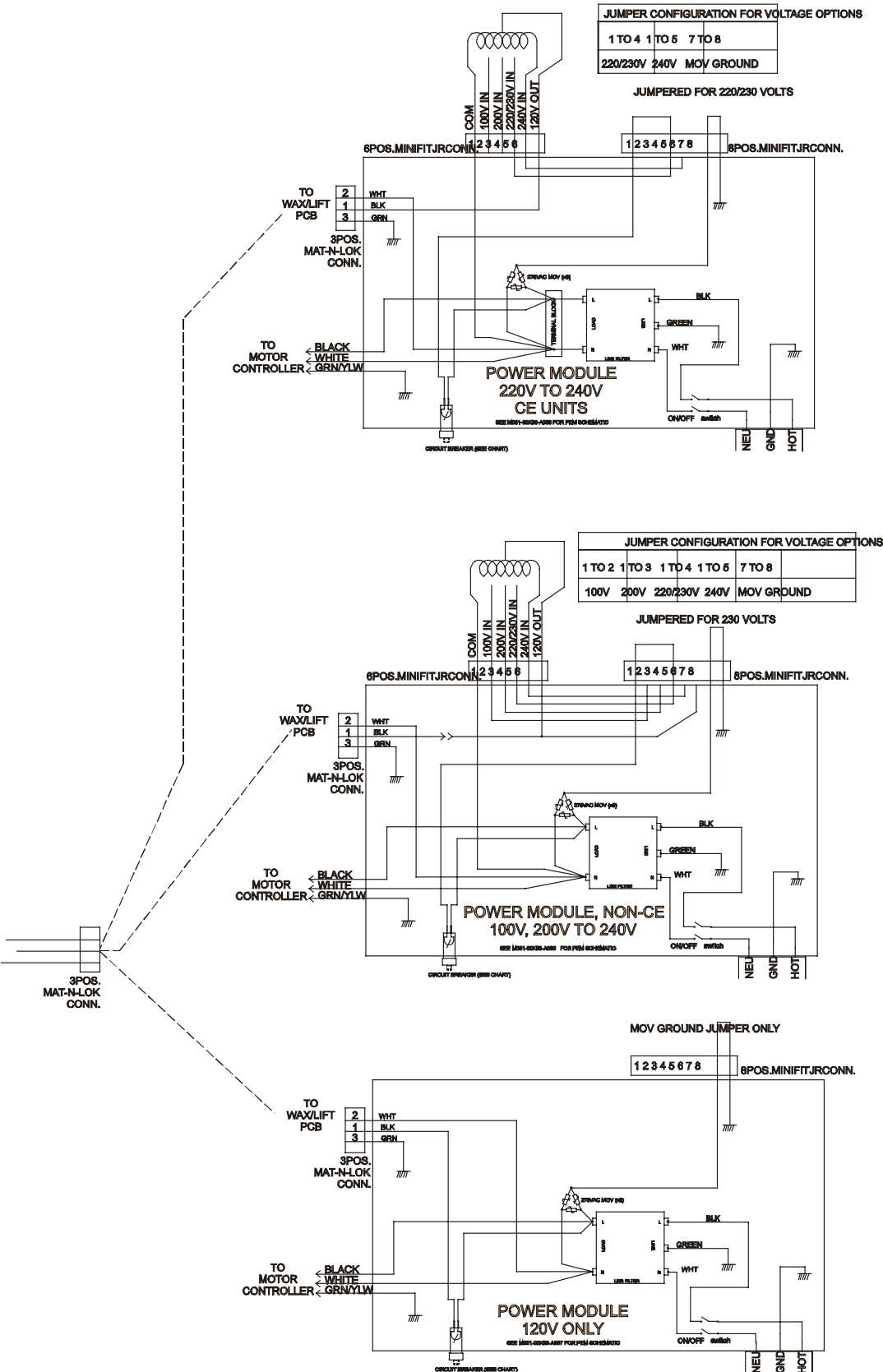












Power Modules